



JOHN BEL EDWARDS
GOVERNOR

State of Louisiana
DEPARTMENT OF NATURAL RESOURCES
OFFICE OF CONSERVATION

THOMAS F. HARRIS
SECRETARY

MONIQUE M. EDWARDS
COMMISSIONER OF CONSERVATION

For Immediate Public Release.

DECLARATION OF EMERGENCY NO. 2023-1

Pursuant to the authority granted to the Commissioner of Conservation under La. Const. art. IX, § 1; La. R.S. 36:351; La. R.S. 36:358(C); La. R.S. 36:359(B)(1); La. R.S. 30:1 et seq., and particularly La. R.S. 30:4(A), La. R.S. 30:4(M), and La. R.S. 30:6.1; and LAC 43:XVII, Chs. 3 and 33:

It is hereby declared that the Louisiana Department of Natural Resources, Office of Conservation has received evidence from operators, confirmed by agents and staff of this office, that ground deformation and subsidence is threatening to occur imminently within the following Area of Concern ("AOC"): a circular area with a radius of 3,200 feet centered upon a point in Section 29, Township 9 South, Range 10 West in Calcasieu Parish, Louisiana, with a Latitude of 30 degrees, 15 minutes, 12.17 seconds and a Longitude of -93 degrees, 24 minutes, and 53.79 seconds, Geographic Coordinate System North American Datum of 1927 (GCS NAD 27), approximately corresponding to the well head of Westlake US 2, LLC's PPG 007B Well (State Serial Number 67270) and encompassing the Sulphur Mines Salt Dome, approximately one mile west-northwest of Sulphur, Louisiana. (*See attached map.*)

It is further declared that such imminent ground deformation and subsidence is threatening to occur at an oilfield site or other facility, structure, or pipeline under the Commissioner of Conservation's jurisdiction pursuant to La. R.S. 30:1 et seq.

It is further declared that such evidence is based upon recognized criteria, standards, or industry practices, specifically testing of mechanical integrity of the wells and solution-mined salt caverns within the AOC, observation of bubbling and other surface expression of released hydrocarbons through vertical conduits within the AOC, seismicity monitoring within the AOC, and satellite monitoring of ground subsidence within the AOC.

It is further declared that such imminent subsidence is of such magnitude as to require immediate action to prevent substantial or irreparable damage to the environment or a serious threat to life or safety, namely a significant subsidence resulting in a sinkhole and the potential release of hydrocarbons, brine, hydrogen sulfide, and/or other substances harmful to human health and safety into fresh water supplies, including the Chicot Aquifer, as well as to the surface and into the atmosphere.

It is further declared that such imminent subsidence is an emergency within the AOC that requires immediate action by the operator of record of the subject well, Westlake US 2, LLC (W1039), and other operators of wells and caverns within the AOC, to evaluate thoroughly the integrity of the subject well and other wells and caverns within the AOC and to undertake all necessary and appropriate action to halt the deterioration of the caverns' integrity and to contain, abate, and clean up any pollution source and pollutants related to this emergency.

Executive Division

Post Office Box 94275 • Baton Rouge, Louisiana 70804-9275 • 617 North 3rd Street • 9th Floor • Baton Rouge, Louisiana 70802

Phone: (225) 342-5505 • www.dnr.state.la.us/conservation

It is further declared that, if Westlake US 2, LLC, or any other operator fails to begin evaluation and abatement procedures within twenty-four hours after notice, the Commissioner of Conservation shall begin the emergency procedures provided for in La. R.S. 30:6.1.

It is further declared that the Commissioner of Conservation may retain personnel or contract with persons who shall operate under her direction to address the emergency conditions and that such contracts shall be exempt from the provisions of La. R.S. 38:2181-2320.11 and La. R.S. 39:1551-1755 and regulations thereunder, including, but not limited to, LAC 34:I.5101-5513 and LAC 34:V.101-3301.

It is further declared that emergency response personnel or contractors are authorized to undertake all necessary actions to contain and abate any pollution source and pollutants related to this emergency, as well as any other related, imminent threats to public health, safety, and property.

It is further declared that the Commissioner of Conservation may issue permits, variances, or other orders as necessary to respond to this emergency.

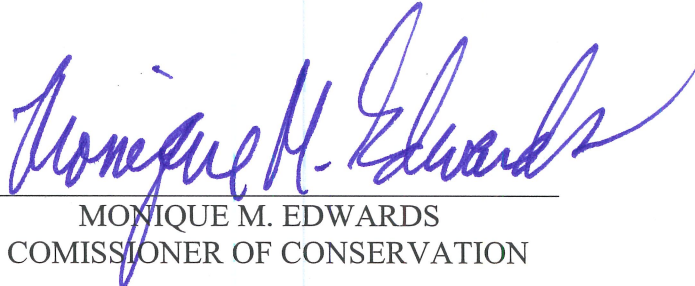
It is further declared that any operator that fails or refuses to comply fully and timely with any order of the Commissioner of Conservation with respect to this emergency shall be subject to civil penalties or other appropriate regulatory sanctions provided by law, including, but not limited to, those under La. R.S. 30:18.

It is further declared that, in responding to this emergency, the Commissioner of Conservation may utilize any funds allowable under federal and state law and any funds that have been appropriated for emergency response purposes, including, but not limited to, the Oilfield Site Restoration Fund, pursuant to La. R.S. 30:80 et seq.

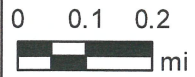
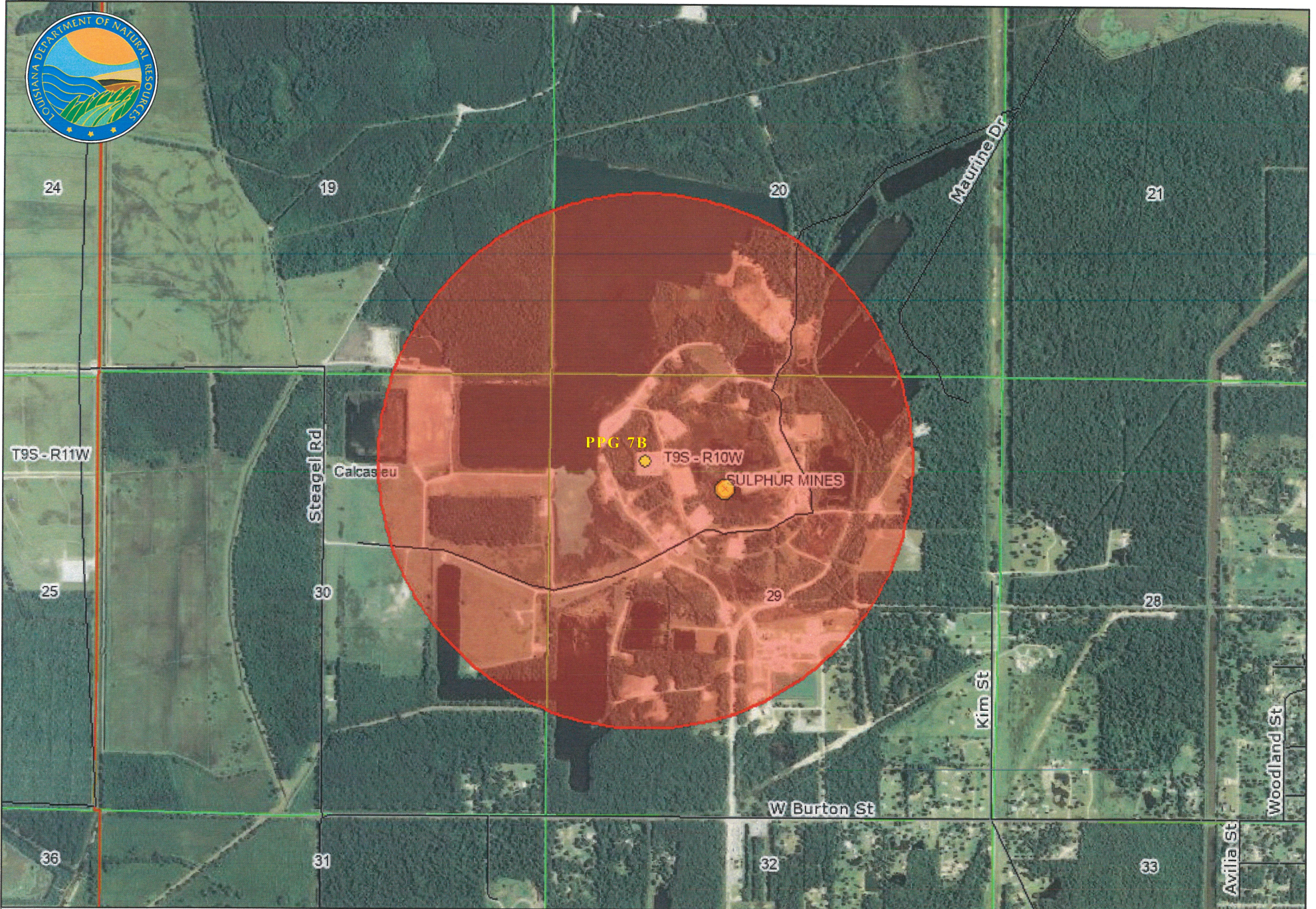
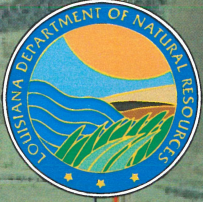
It is further declared that recovery of costs expended by the Louisiana Department of Natural Resources, Office of Conservation shall be in accordance with applicable statutes, rules, and regulations.

It is further declared that this Declaration of Emergency shall be widely distributed and disseminated to local, state, and federal authorities; residents near the AOC; and members of the general public to aid in governmental coordination and public awareness of this emergency.

SO DECLARED, ORDERED, AND DONE this 20th day of September, 2023, at Baton Rouge, Louisiana.



MONIQUE M. EDWARDS
COMMISSIONER OF CONSERVATION



Absolute Scale: 1:18,300

Relative Scale: 1 inch = 1,525 feet

Sulphur Mines Area of Concern (3200')

Date: 9/20/2023

