

Environmental Consultants  
 91 Apollo Road  
 Scott, Louisiana 70583  
 (337) 261-1963 Fax (337) 261-1953



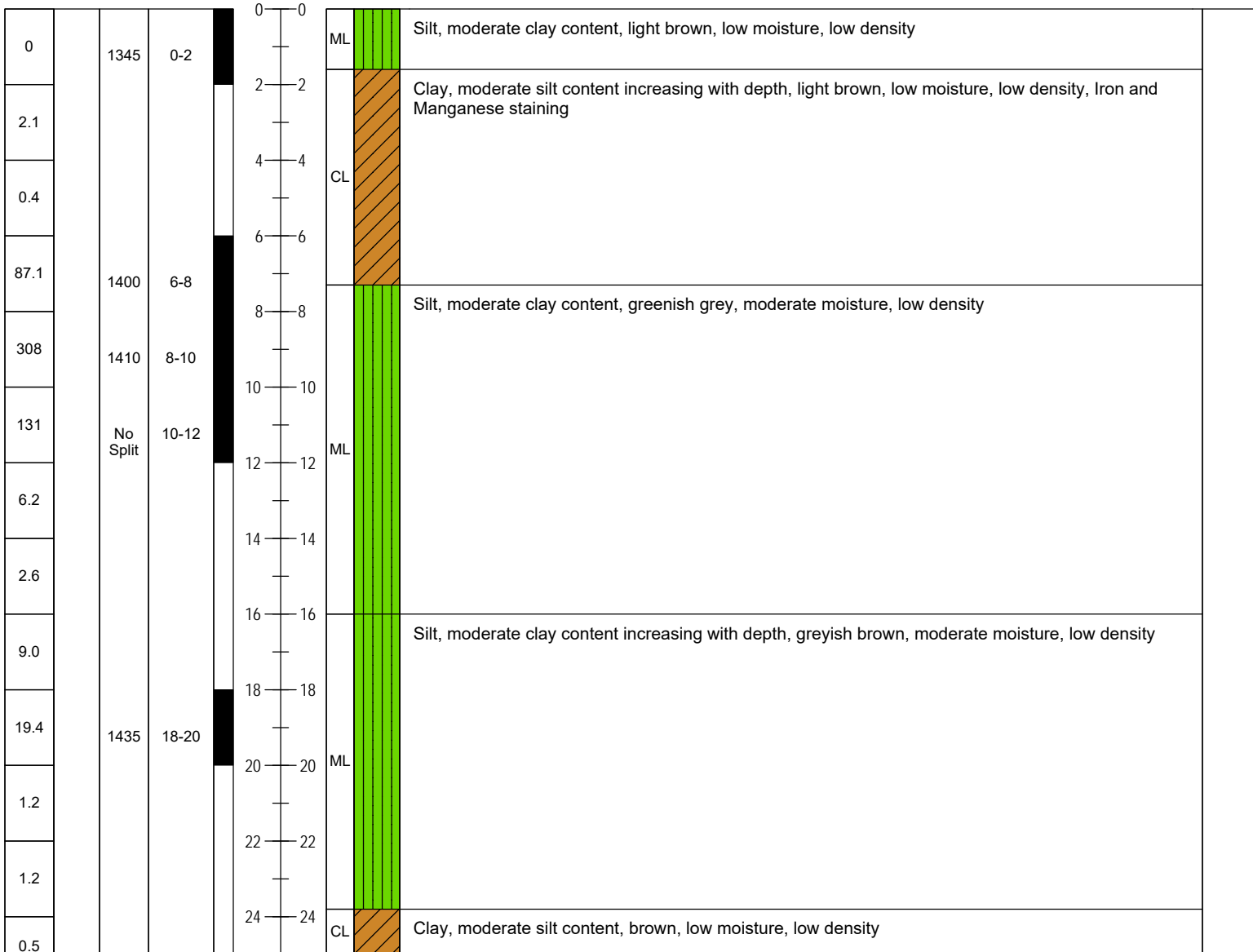
BORING No. AB-4

Vincent Charles Bundrick & Cajun Pride, Inc.  
 v. Anadarko Petroleum Corporation, et al.

PROJECT NAME \_\_\_\_\_  
 PROJECT NUMBER 1009.54  
 LOCATION Anse La Butte, LA  
 DRILLING METHOD AMS Power Probe  
 SAMPLING METHOD 4' X 2.25" Dual Tube  
 GROUND ELEVATION N/A  
 TOP OF CASING N/A  
 LOGGED BY R. Jude Baudoin  
 REMARKS Field Coordinates: 30.25656, -91.94234

DATE STARTED 04-14-11  
 DATE COMPLETED 04-14-11  
 CASING TYPE/DIAMETER PVC / 0.75"  
 SCREEN TYPE/SLOT PVC with filter sock / 0.010"  
 SAND PACK/TYPE N/A  
 GROUT TYPE/QUANTITY Bentonite Slurry  
 DRILLED DEPTH TO WATER 29 Feet BLS  
 TOTAL DEPTH 40 Feet BLS

PID (ppm)	SCREENED INTERVAL	SAMPLE TIME	SAMPLE ID.	EXTENT	DEPTH (FT BLS)	U.S.C.S	GRAPHIC LOG	LITHOLOGIC DESCRIPTION	CONDUCTIVITY (mS/cm)
-----------	-------------------	-------------	------------	--------	----------------	---------	-------------	------------------------	----------------------



Environmental Consultants  
 91 Apollo Road  
 Scott, Louisiana 70583  
 (337) 261-1963 Fax (337) 261-1953



BORING No. AB-4

Vincent Charles Bundrick & Cajun Pride, Inc.  
 v. Anadarko Petroleum Corporation, et al.

PROJECT NAME \_\_\_\_\_  
 PROJECT NUMBER 1009.54  
 LOCATION Anse La Butte, LA  
 DRILLING METHOD AMS Power Probe  
 SAMPLING METHOD 4' X 2.25" Dual Tube  
 GROUND ELEVATION N/A  
 TOP OF CASING N/A  
 LOGGED BY R. Jude Baudoin  
 REMARKS Field Coordinates: 30.25656, -91.94234

DATE STARTED 04-14-11  
 DATE COMPLETED 04-14-11  
 CASING TYPE/DIAMETER PVC / 0.75"  
 SCREEN TYPE/SLOT PVC with filter sock / 0.010"  
 SAND PACK/TYPE N/A  
 GROUT TYPE/QUANTITY Bentonite Slurry  
 DRILLED DEPTH TO WATER 29 Feet BLS  
 TOTAL DEPTH 40 Feet BLS

PID (ppm)	SCREENED INTERVAL	SAMPLE TIME	SAMPLE ID.	EXTENT	DEPTH (FT BLS)	U.S.C.S	GRAPHIC LOG	LITHOLOGIC DESCRIPTION	CONDUCTIVITY (mS/cm)
-----------	-------------------	-------------	------------	--------	----------------	---------	-------------	------------------------	----------------------

