

Well Number (Screen Interval)	Date	Sampler	Salinity		
			EC	ESP	SAR
			29B	29B	29B
LDNR Standards ¹	N/A	N/A	4	<12	<14
LDEQ Standards ²	N/A	N/A	N/A	N/A	N/A
SB-2 (0-2')	04/21/16	ICON	0.21	0.27	0.6
SB-2 (0-2')	04/21/16	HET	0.198	15.2	0.468
SB-2 (2-4')	04/21/16	ICON	0.13	0.43	0.7
SB-2 (2-4')	04/21/16	HET	—	—	—

Well Number (Screen Interval)	Date	Sampler	Salinity		
			EC	ESP	SAR
			29B	29B	29B
LDNR Standards ¹	N/A	N/A	4	<12	<14
LDEQ Standards ²	N/A	N/A	N/A	N/A	N/A
GH-7 (0-2')	02/20/15	ICON	1.37	15.9	16.5
GH-7 (2-4')	02/20/15	ICON	7.25	13.4	26.7
GH-7 (4-6')	02/20/15	ICON	8.24	17.7	23
GH-7 (6-8')	04/22/16	ICON	3.27	17	19.3
GH-7 (6-8')	04/22/16	HET	2.76	—	—
GH-7 (8-10')	04/22/16	ICON	5.01	15	18.6
GH-7 (8-10')	04/22/16	HET	3.92	—	—

Well Number (Screen Interval)	Date	Sampler	Salinity		
			EC	ESP	SAR
			29B	29B	29B
LDNR Standards ¹	N/A	N/A	4	<12	<14
LDEQ Standards ²	N/A	N/A	N/A	N/A	N/A
SB-4 (0-2')	04/22/16	ICON	0.78	5.08	7.34
SB-4 (0-2')	04/22/16	HET	1.21	12.7	6.13
SB-4 (4-6')	04/22/16	ICON	2.74	3.38	6.5
SB-4 (4-6')	04/22/16	HET	2.22	—	—

Well Number (Screen Interval)	Date	Sampler	Salinity		
			EC	ESP	SAR
			29B	29B	29B
LDNR Standards ¹	N/A	N/A	4	<12	<14
LDEQ Standards ²	N/A	N/A	N/A	N/A	N/A
GC-15 (0-2')	05/03/16	ICON	1.57	12.7	13.6
GC-15 (0-2')	05/03/16	HET	1.25	11.5	14.3
GC-15 (6-8')	05/03/16	ICON	3.1	11.9	15.8
GC-15 (6-8')	05/03/16	HET	—	—	—
GC-15 (8-10')	05/03/16	ICON	3.03	11.5	17.1
GC-15 (8-10')	05/03/16	HET	2.28	—	—

Well Number (Screen Interval)	Date	Sampler	Salinity		
			EC	ESP	SAR
			29B	29B	29B
LDNR Standards ¹	N/A	N/A	4	<12	<14
LDEQ Standards ²	N/A	N/A	N/A	N/A	N/A
GC-7 (0-2')	03/07/16	ICON	1.16	16.1	15.2
GC-7 (0-2')	03/07/16	HET	1.08	9.17	11.6
GC-7 (4-6')	03/07/16	ICON	—	—	—
GC-7 (4-6')	03/07/16	HET	0.53	—	—

Well Number (Screen Interval)	Date	Sampler	Salinity		
			EC	ESP	SAR
			29B	29B	29B
LDNR Standards ¹	N/A	N/A	4	<12	<14
LDEQ Standards ²	N/A	N/A	N/A	N/A	N/A
GC-10 (0-2')	04/25/16	ICON	1.32	20.6	18.5
GC-10 (0-2')	04/25/16	HET	1.31	17.8	17.6
GC-10 (6-8')	04/25/16	ICON	3.63	—	—
GC-10 (6-8')	04/25/16	HET	—	—	—
GC-10 (8-10')	04/25/16	ICON	7.72	—	—
GC-10 (8-10')	04/25/16	HET	5.56	—	—
GC-10 (14-16')	04/25/16	ICON	14	—	—
GC-10 (14-16')	04/25/16	HET	8.74	—	—
GC-10 (20-22')	04/25/16	ICON	12.6	—	—
GC-10 (20-22')	04/25/16	HET	8.84	—	—
GC-10 (28-30')	04/25/16	ICON	2.37	—	—
GC-10 (28-30')	04/25/16	HET	2.3	—	—

Well Number (Screen Interval)	Date	Sampler	Salinity		
			EC	ESP	SAR
			29B	29B	29B
LDNR Standards ¹	N/A	N/A	4	<12	<14
LDEQ Standards ²	N/A	N/A	N/A	N/A	N/A
GH-4 (0-2')	02/19/15	ICON	2.01	18.9	20.1
GH-4 (2-4')	02/19/15	ICON	1.17	27.5	22.4
GH-4 (4-6')	02/19/15	ICON	1.03	36.2	19.4

Well Number (Screen Interval)	Date	Sampler	Salinity		
			EC	ESP	SAR
			29B	29B	29B
LDNR Standards ¹	N/A	N/A	4	<12	<14
LDEQ Standards ²	N/A	N/A	N/A	N/A	N/A
SB-08 (0-2')	05/06/16	ICON	0.47	5.21	7.87
SB-08 (0-2')	05/06/16	HET	1.33	23.9	13
SB-08 (2-4')	05/06/16	ICON	0.81	26.4	19
SB-08 (2-4')	05/06/16	HET	0.891	—	—
SB-08 (4-6')	05/06/16	ICON	1.41	30.5	20.2
SB-08 (4-6')	05/06/16	HET	3.12	—	—
SB-08 (6-8')	05/06/16	ICON	3.65	30.8	35.3
SB-08 (6-8')	05/06/16	HET	2.99	—	—
SB-08 (8-10')	05/06/16	ICON	5.17	29.4	40.7
SB-08 (8-10')	05/06/16	HET	6.03	—	—
SB-08 (10-12')	05/06/16	ICON	8	25.9	43.4
SB-08 (10-12')	05/06/16	HET	4.05	—	—

Well Number (Screen Interval)	Date	Sampler	Salinity		
			EC	ESP	SAR
			29B	29B	29B
LDNR Standards ¹	N/A	N/A	4	<12	<14
LDEQ Standards ²	N/A	N/A	N/A	N/A	N/A
GC-4 (0-2')	03/03/16	ICON	1.74	25.5	22.3
GC-4 (0-2')	03/03/16	HET	2.14	16	18.9
GC-4 (4-6')	03/03/16	ICON	4.09	23.9	44.9
GC-4 (4-6')	03/03/16	HET	3.88	—	—
GC-4 (8-10')	03/03/16	ICON	9.88	—	—
GC-4 (8-10')	03/03/16	HET	7.53	—	—
GC-4 (12-14')	03/03/16	ICON	22.7	—	—
GC-4 (12-14')	03/03/16	HET	15.4	—	—
GC-4 (20-22')	03/03/16	ICON	22.3	—	—
GC-4 (20-22')	03/03/16	HET	15.7	—	—
GC-4 (28-28')	03/03/16	ICON	6.03	—	—
GC-4 (28-28')	03/03/16	HET	12.1	—	—
GC-4 (32-34')	03/03/16	ICON	4.62	—	—
GC-4 (32-34')	03/03/16	HET	3.28	—	—

Well Number (Screen Interval)	Date	Sampler	Salinity		
			EC	ESP	SAR
			29B	29B	29B
LDNR Standards ¹	N/A	N/A	4	<12	<14
LDEQ Standards ²	N/A	N/A	N/A	N/A	N/A
SB-3 (0-2')	04/22/16	ICON	0.64	13.3	9.1
SB-3 (0-2')	04/22/16	HET	0.647	5.29	9.65
SB-3 (4-6')	04/22/16	ICON	0.74	13.4	10.6
SB-3 (4-6')	04/22/16	HET	0.748	—	—
SB-3 (6-8')	04/22/16	ICON	0.98	9.9	13.5
SB-3 (6-8')	04/22/16	HET	0.902	—	—

Well Number (Screen Interval)	Date	Sampler	Salinity		
			EC	ESP	SAR
			29B	29B	29B
LDNR Standards ¹	N/A	N/A	4	<12	<14
LDEQ Standards ²	N/A	N/A	N/A	N/A	N/A
DB5 / MW5 (50-52')	08/01/16	HET	2.04	—	—
MW5 (50-52')	08/01/16	ICON	2.55	—	—
DB5 / MW5 (56-58')	08/01/16	HET	16	—	—
MW5 (56-58')	08/01/16	ICON	21.2	—	—
DB5 / MW5 (62-64')	08/01/16	HET	13.4	—	—
MW5 (62-64')	08/01/16	ICON	13.6	—	—
DB5 / MW5 (68-70')	08/01/16	HET	1.04	—	—
MW5 (68-70')	08/01/16	ICON	0.76	—	—

Well Number (Screen Interval)	Date	Sampler	Salinity		
			EC	ESP	SAR
			29B	29B	29B
LDNR Standards ¹	N/A	N/A	4	<12	<14
LDEQ Standards ²	N/A	N/A	N/A	N/A	N/A
SB-5 (0-2')	04/22/16	ICON	0.99	16.2	15.7
SB-5 (0-2')	04/22/16	HET	1.67	12.3	16.5
SB-5 (4-6')	04/22/16	ICON	0.83	7.75	10.7
SB-5 (4-6')	04/22/16	HET	1.01	—	—

Explanation

- HET Deep Boring Locations
- ICON Boring Locations
- Bundrick Approximate Property Boundary
- Guidry Approximate Property Boundary

Limited Admission Areas

- ▭ Groundwater Area
- ▭ Soil Area

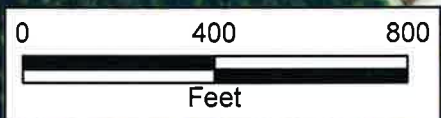
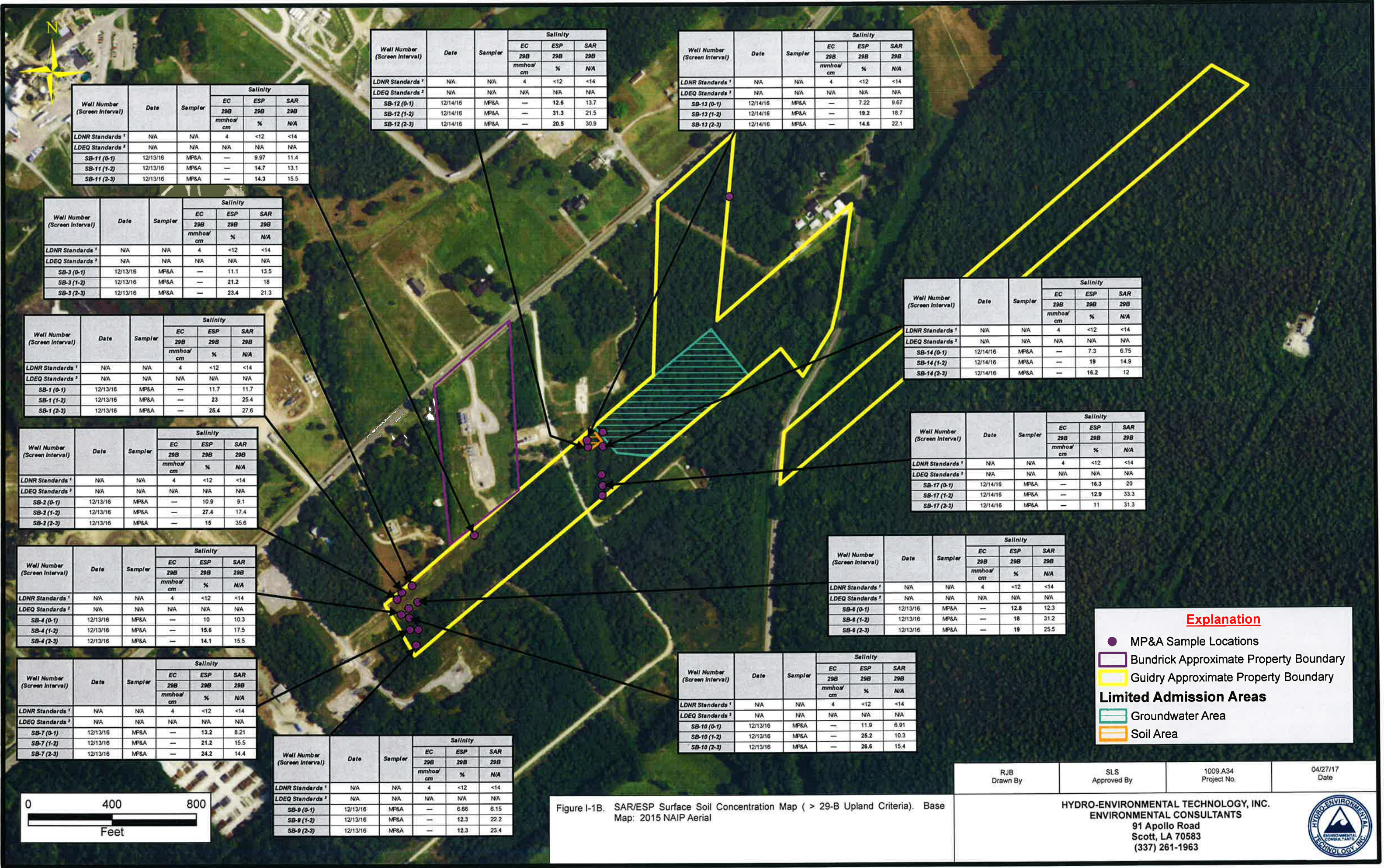


Figure I-1A. EC/SAR/ESP Soil Concentration Map (> 29-B Upland Criteria). Base Map: 2015 NAIP Aerial

RJB Drawn By	SLS Approved By	1009.A34 Project No.	04/27/17 Date
-----------------	--------------------	-------------------------	------------------

HYDRO-ENVIRONMENTAL TECHNOLOGY, INC.
ENVIRONMENTAL CONSULTANTS
91 Apollo Road
Scott, LA 70583
(337) 261-1963



Well Number (Screen Interval)	Date	Sampler	Salinity		
			EC	ESP	SAR
			29B	29B	29B
			mmhos/cm	%	N/A
LDNR Standards ¹	N/A	N/A	4	<12	<14
LDEQ Standards ²	N/A	N/A	N/A	N/A	N/A
SB-11 (0-1)	12/13/16	MP&A	—	9.97	11.4
SB-11 (1-2)	12/13/16	MP&A	—	14.7	13.1
SB-11 (2-3)	12/13/16	MP&A	—	14.3	15.5

Well Number (Screen Interval)	Date	Sampler	Salinity		
			EC	ESP	SAR
			29B	29B	29B
			mmhos/cm	%	N/A
LDNR Standards ¹	N/A	N/A	4	<12	<14
LDEQ Standards ²	N/A	N/A	N/A	N/A	N/A
SB-12 (0-1)	12/14/16	MP&A	—	12.6	13.7
SB-12 (1-2)	12/14/16	MP&A	—	31.3	21.5
SB-12 (2-3)	12/14/16	MP&A	—	20.5	30.9

Well Number (Screen Interval)	Date	Sampler	Salinity		
			EC	ESP	SAR
			29B	29B	29B
			mmhos/cm	%	N/A
LDNR Standards ¹	N/A	N/A	4	<12	<14
LDEQ Standards ²	N/A	N/A	N/A	N/A	N/A
SB-13 (0-1)	12/14/16	MP&A	—	7.22	9.67
SB-13 (1-2)	12/14/16	MP&A	—	19.2	18.7
SB-13 (2-3)	12/14/16	MP&A	—	14.8	22.1

Well Number (Screen Interval)	Date	Sampler	Salinity		
			EC	ESP	SAR
			29B	29B	29B
			mmhos/cm	%	N/A
LDNR Standards ¹	N/A	N/A	4	<12	<14
LDEQ Standards ²	N/A	N/A	N/A	N/A	N/A
SB-3 (0-1)	12/13/16	MP&A	—	11.1	13.5
SB-3 (1-2)	12/13/16	MP&A	—	21.2	18
SB-3 (2-3)	12/13/16	MP&A	—	23.4	21.3

Well Number (Screen Interval)	Date	Sampler	Salinity		
			EC	ESP	SAR
			29B	29B	29B
			mmhos/cm	%	N/A
LDNR Standards ¹	N/A	N/A	4	<12	<14
LDEQ Standards ²	N/A	N/A	N/A	N/A	N/A
SB-14 (0-1)	12/14/16	MP&A	—	7.3	6.75
SB-14 (1-2)	12/14/16	MP&A	—	19	14.9
SB-14 (2-3)	12/14/16	MP&A	—	16.2	12

Well Number (Screen Interval)	Date	Sampler	Salinity		
			EC	ESP	SAR
			29B	29B	29B
			mmhos/cm	%	N/A
LDNR Standards ¹	N/A	N/A	4	<12	<14
LDEQ Standards ²	N/A	N/A	N/A	N/A	N/A
SB-1 (0-1)	12/13/16	MP&A	—	11.7	11.7
SB-1 (1-2)	12/13/16	MP&A	—	23	25.4
SB-1 (2-3)	12/13/16	MP&A	—	25.4	27.6

Well Number (Screen Interval)	Date	Sampler	Salinity		
			EC	ESP	SAR
			29B	29B	29B
			mmhos/cm	%	N/A
LDNR Standards ¹	N/A	N/A	4	<12	<14
LDEQ Standards ²	N/A	N/A	N/A	N/A	N/A
SB-17 (0-1)	12/14/16	MP&A	—	16.3	20
SB-17 (1-2)	12/14/16	MP&A	—	12.9	33.3
SB-17 (2-3)	12/14/16	MP&A	—	11	31.3

Well Number (Screen Interval)	Date	Sampler	Salinity		
			EC	ESP	SAR
			29B	29B	29B
			mmhos/cm	%	N/A
LDNR Standards ¹	N/A	N/A	4	<12	<14
LDEQ Standards ²	N/A	N/A	N/A	N/A	N/A
SB-2 (0-1)	12/13/16	MP&A	—	10.9	9.1
SB-2 (1-2)	12/13/16	MP&A	—	27.4	17.4
SB-2 (2-3)	12/13/16	MP&A	—	15	35.6

Well Number (Screen Interval)	Date	Sampler	Salinity		
			EC	ESP	SAR
			29B	29B	29B
			mmhos/cm	%	N/A
LDNR Standards ¹	N/A	N/A	4	<12	<14
LDEQ Standards ²	N/A	N/A	N/A	N/A	N/A
SB-6 (0-1)	12/13/16	MP&A	—	12.8	12.3
SB-6 (1-2)	12/13/16	MP&A	—	18	31.2
SB-6 (2-3)	12/13/16	MP&A	—	19	25.5

Well Number (Screen Interval)	Date	Sampler	Salinity		
			EC	ESP	SAR
			29B	29B	29B
			mmhos/cm	%	N/A
LDNR Standards ¹	N/A	N/A	4	<12	<14
LDEQ Standards ²	N/A	N/A	N/A	N/A	N/A
SB-4 (0-1)	12/13/16	MP&A	—	10	10.3
SB-4 (1-2)	12/13/16	MP&A	—	15.6	17.5
SB-4 (2-3)	12/13/16	MP&A	—	14.1	15.5

Well Number (Screen Interval)	Date	Sampler	Salinity		
			EC	ESP	SAR
			29B	29B	29B
			mmhos/cm	%	N/A
LDNR Standards ¹	N/A	N/A	4	<12	<14
LDEQ Standards ²	N/A	N/A	N/A	N/A	N/A
SB-10 (0-1)	12/13/16	MP&A	—	11.9	6.91
SB-10 (1-2)	12/13/16	MP&A	—	25.2	10.3
SB-10 (2-3)	12/13/16	MP&A	—	26.6	15.4

Well Number (Screen Interval)	Date	Sampler	Salinity		
			EC	ESP	SAR
			29B	29B	29B
			mmhos/cm	%	N/A
LDNR Standards ¹	N/A	N/A	4	<12	<14
LDEQ Standards ²	N/A	N/A	N/A	N/A	N/A
SB-7 (0-1)	12/13/16	MP&A	—	13.2	8.21
SB-7 (1-2)	12/13/16	MP&A	—	21.2	15.5
SB-7 (2-3)	12/13/16	MP&A	—	24.2	14.4

Well Number (Screen Interval)	Date	Sampler	Salinity		
			EC	ESP	SAR
			29B	29B	29B
			mmhos/cm	%	N/A
LDNR Standards ¹	N/A	N/A	4	<12	<14
LDEQ Standards ²	N/A	N/A	N/A	N/A	N/A
SB-9 (0-1)	12/13/16	MP&A	—	6.66	6.15
SB-9 (1-2)	12/13/16	MP&A	—	12.3	22.2
SB-9 (2-3)	12/13/16	MP&A	—	12.3	23.4

Explanation

- MP&A Sample Locations
- ▭ Bundrick Approximate Property Boundary
- ▭ Guidry Approximate Property Boundary
- Limited Admission Areas**
 - ▭ Groundwater Area
 - ▭ Soil Area

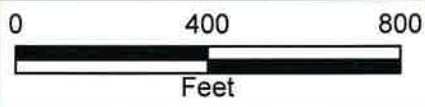
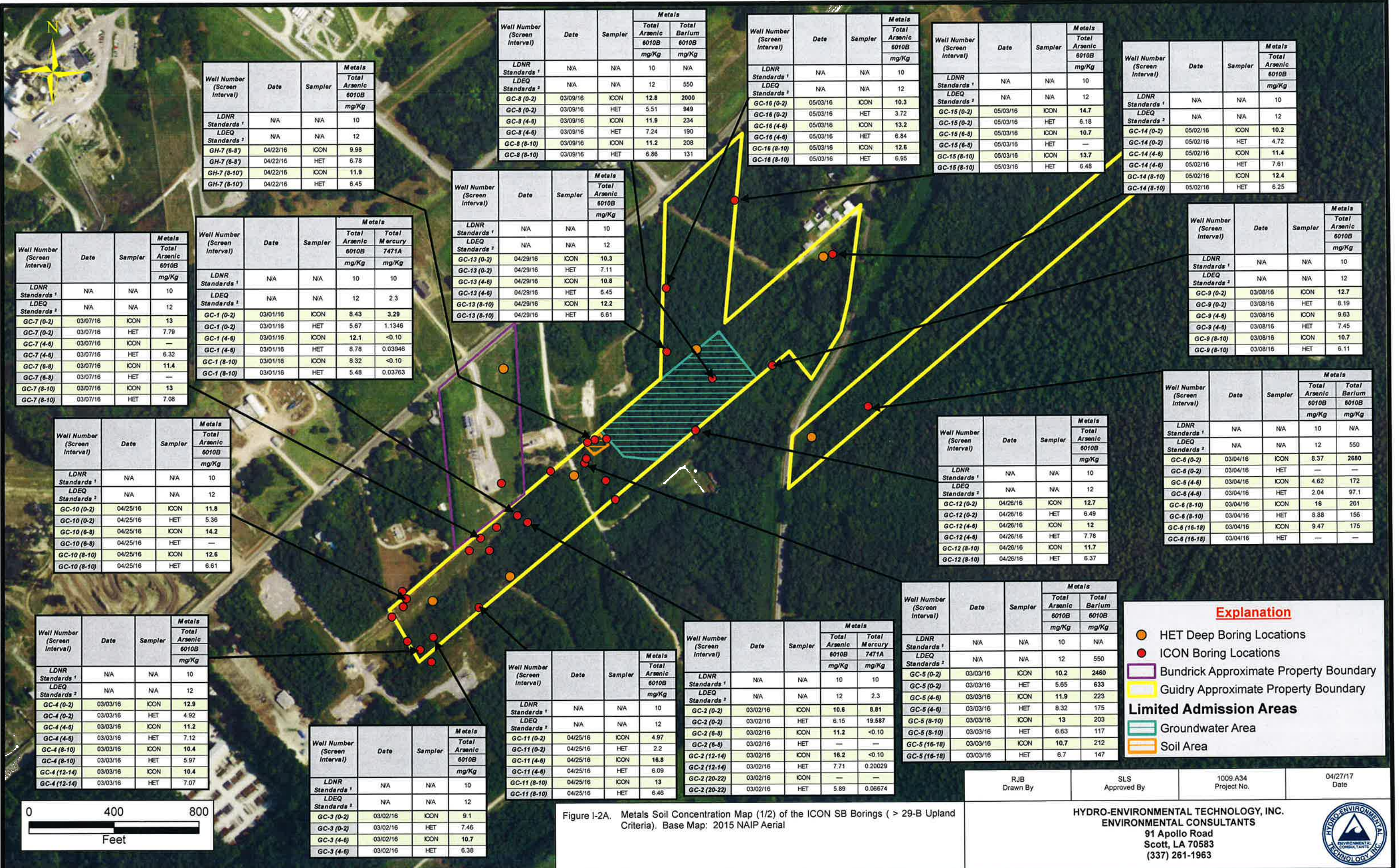


Figure I-1B. SAR/ESP Surface Soil Concentration Map (> 29-B Upland Criteria). Base Map: 2015 NAIP Aerial

RJB Drawn By	SLS Approved By	1009.A34 Project No.	04/27/17 Date
-----------------	--------------------	-------------------------	------------------

HYDRO-ENVIRONMENTAL TECHNOLOGY, INC.
ENVIRONMENTAL CONSULTANTS
91 Apollo Road
Scott, LA 70583
(337) 261-1963



Well Number (Screen Interval)	Date	Sampler	Metals	
			Total Arsenic 6010B mg/Kg	Total Barium 6010B mg/Kg
LDNR Standards ¹	N/A	N/A	10	N/A
LDEQ Standards ²	N/A	N/A	12	550
GH-7 (6-8)	04/22/16	ICON	9.98	
GH-7 (6-8)	04/22/16	HET	6.78	
GH-7 (8-10)	04/22/16	ICON	11.9	
GH-7 (8-10)	04/22/16	HET	6.45	

Well Number (Screen Interval)	Date	Sampler	Metals	
			Total Arsenic 6010B mg/Kg	Total Barium 6010B mg/Kg
LDNR Standards ¹	N/A	N/A	10	N/A
LDEQ Standards ²	N/A	N/A	12	550
GC-8 (0-2)	03/09/16	ICON	12.8	2000
GC-8 (0-2)	03/09/16	HET	5.51	949
GC-8 (4-6)	03/09/16	ICON	11.9	234
GC-8 (4-6)	03/09/16	HET	7.24	190
GC-8 (8-10)	03/09/16	ICON	11.2	208
GC-8 (8-10)	03/09/16	HET	6.86	131

Well Number (Screen Interval)	Date	Sampler	Metals	
			Total Arsenic 6010B mg/Kg	Total Barium 6010B mg/Kg
LDNR Standards ¹	N/A	N/A	10	N/A
LDEQ Standards ²	N/A	N/A	12	550
GC-16 (0-2)	05/03/16	ICON	10.3	
GC-16 (0-2)	05/03/16	HET	3.72	
GC-16 (4-6)	05/03/16	ICON	13.2	
GC-16 (4-6)	05/03/16	HET	6.84	
GC-16 (8-10)	05/03/16	ICON	12.6	
GC-16 (8-10)	05/03/16	HET	6.95	

Well Number (Screen Interval)	Date	Sampler	Metals	
			Total Arsenic 6010B mg/Kg	Total Barium 6010B mg/Kg
LDNR Standards ¹	N/A	N/A	10	N/A
LDEQ Standards ²	N/A	N/A	12	550
GC-15 (0-2)	05/03/16	ICON	14.7	
GC-15 (0-2)	05/03/16	HET	6.18	
GC-15 (6-8)	05/03/16	ICON	10.7	
GC-15 (6-8)	05/03/16	HET	—	
GC-15 (8-10)	05/03/16	ICON	13.7	
GC-15 (8-10)	05/03/16	HET	6.48	

Well Number (Screen Interval)	Date	Sampler	Metals	
			Total Arsenic 6010B mg/Kg	Total Barium 6010B mg/Kg
LDNR Standards ¹	N/A	N/A	10	N/A
LDEQ Standards ²	N/A	N/A	12	550
GC-14 (0-2)	05/02/16	ICON	10.2	
GC-14 (0-2)	05/02/16	HET	4.72	
GC-14 (4-6)	05/02/16	ICON	11.4	
GC-14 (4-6)	05/02/16	HET	7.61	
GC-14 (8-10)	05/02/16	ICON	12.4	
GC-14 (8-10)	05/02/16	HET	6.25	

Well Number (Screen Interval)	Date	Sampler	Metals	
			Total Arsenic 6010B mg/Kg	Total Mercury 7471A mg/Kg
LDNR Standards ¹	N/A	N/A	10	
LDEQ Standards ²	N/A	N/A	12	2.3
GC-7 (0-2)	03/07/16	ICON	13	
GC-7 (0-2)	03/07/16	HET	7.78	
GC-7 (4-6)	03/07/16	ICON	—	
GC-7 (4-6)	03/07/16	HET	6.32	
GC-7 (8-8)	03/07/16	ICON	11.4	
GC-7 (8-8)	03/07/16	HET	—	
GC-7 (8-10)	03/07/16	ICON	13	
GC-7 (8-10)	03/07/16	HET	7.08	

Well Number (Screen Interval)	Date	Sampler	Metals	
			Total Arsenic 6010B mg/Kg	Total Mercury 7471A mg/Kg
LDNR Standards ¹	N/A	N/A	10	10
LDEQ Standards ²	N/A	N/A	12	2.3
GC-1 (0-2)	03/01/16	ICON	8.43	3.29
GC-1 (0-2)	03/01/16	HET	5.67	1.1346
GC-1 (4-6)	03/01/16	ICON	12.1	<0.10
GC-1 (4-6)	03/01/16	HET	8.78	0.03946
GC-1 (8-10)	03/01/16	ICON	8.32	<0.10
GC-1 (8-10)	03/01/16	HET	5.48	0.03763

Well Number (Screen Interval)	Date	Sampler	Metals	
			Total Arsenic 6010B mg/Kg	Total Mercury 7471A mg/Kg
LDNR Standards ¹	N/A	N/A	10	
LDEQ Standards ²	N/A	N/A	12	
GC-13 (0-2)	04/29/16	ICON	10.3	
GC-13 (0-2)	04/29/16	HET	7.11	
GC-13 (4-6)	04/29/16	ICON	10.8	
GC-13 (4-6)	04/29/16	HET	6.45	
GC-13 (8-10)	04/29/16	ICON	12.2	
GC-13 (8-10)	04/29/16	HET	6.61	

Well Number (Screen Interval)	Date	Sampler	Metals	
			Total Arsenic 6010B mg/Kg	Total Mercury 7471A mg/Kg
LDNR Standards ¹	N/A	N/A	10	
LDEQ Standards ²	N/A	N/A	12	
GC-9 (0-2)	03/08/16	ICON	12.7	
GC-9 (0-2)	03/08/16	HET	8.19	
GC-9 (4-6)	03/08/16	ICON	9.63	
GC-9 (4-6)	03/08/16	HET	7.45	
GC-9 (8-10)	03/08/16	ICON	10.7	
GC-9 (8-10)	03/08/16	HET	6.11	

Well Number (Screen Interval)	Date	Sampler	Metals	
			Total Arsenic 6010B mg/Kg	Total Barium 6010B mg/Kg
LDNR Standards ¹	N/A	N/A	10	N/A
LDEQ Standards ²	N/A	N/A	12	550
GC-6 (0-2)	03/04/16	ICON	8.37	2680
GC-6 (0-2)	03/04/16	HET	—	—
GC-6 (4-6)	03/04/16	ICON	4.62	172
GC-6 (4-6)	03/04/16	HET	2.04	97.1
GC-6 (8-10)	03/04/16	ICON	16	261
GC-6 (8-10)	03/04/16	HET	8.88	156
GC-6 (16-18)	03/04/16	ICON	9.47	175
GC-6 (16-18)	03/04/16	HET	—	—

Well Number (Screen Interval)	Date	Sampler	Metals	
			Total Arsenic 6010B mg/Kg	Total Barium 6010B mg/Kg
LDNR Standards ¹	N/A	N/A	10	N/A
LDEQ Standards ²	N/A	N/A	12	550
GC-12 (0-2)	04/26/16	ICON	12.7	
GC-12 (0-2)	04/26/16	HET	6.49	
GC-12 (4-6)	04/26/16	ICON	12	
GC-12 (4-6)	04/26/16	HET	7.78	
GC-12 (8-10)	04/26/16	ICON	11.7	
GC-12 (8-10)	04/26/16	HET	6.37	

Well Number (Screen Interval)	Date	Sampler	Metals	
			Total Arsenic 6010B mg/Kg	Total Barium 6010B mg/Kg
LDNR Standards ¹	N/A	N/A	10	N/A
LDEQ Standards ²	N/A	N/A	12	550
GC-10 (0-2)	04/25/16	ICON	11.8	
GC-10 (0-2)	04/25/16	HET	5.36	
GC-10 (6-8)	04/25/16	ICON	14.2	
GC-10 (6-8)	04/25/16	HET	—	
GC-10 (8-10)	04/25/16	ICON	12.6	
GC-10 (8-10)	04/25/16	HET	6.61	

Well Number (Screen Interval)	Date	Sampler	Metals	
			Total Arsenic 6010B mg/Kg	Total Barium 6010B mg/Kg
LDNR Standards ¹	N/A	N/A	10	N/A
LDEQ Standards ²	N/A	N/A	12	550
GC-4 (0-2)	03/03/16	ICON	12.9	
GC-4 (0-2)	03/03/16	HET	4.92	
GC-4 (4-6)	03/03/16	ICON	11.2	
GC-4 (4-6)	03/03/16	HET	7.12	
GC-4 (8-10)	03/03/16	ICON	10.4	
GC-4 (8-10)	03/03/16	HET	5.97	
GC-4 (12-14)	03/03/16	ICON	10.4	
GC-4 (12-14)	03/03/16	HET	7.07	

Well Number (Screen Interval)	Date	Sampler	Metals	
			Total Arsenic 6010B mg/Kg	Total Barium 6010B mg/Kg
LDNR Standards ¹	N/A	N/A	10	N/A
LDEQ Standards ²	N/A	N/A	12	550
GC-3 (0-2)	03/02/16	ICON	9.1	
GC-3 (0-2)	03/02/16	HET	7.46	
GC-3 (4-6)	03/02/16	ICON	10.7	
GC-3 (4-6)	03/02/16	HET	6.38	

Well Number (Screen Interval)	Date	Sampler	Metals	
			Total Arsenic 6010B mg/Kg	Total Mercury 7471A mg/Kg
LDNR Standards ¹	N/A	N/A	10	
LDEQ Standards ²	N/A	N/A	12	
GC-11 (0-2)	04/25/16	ICON	4.97	
GC-11 (0-2)	04/25/16	HET	2.2	
GC-11 (4-6)	04/25/16	ICON	16.8	
GC-11 (4-6)	04/25/16	HET	6.09	
GC-11 (8-10)	04/25/16	ICON	13	
GC-11 (8-10)	04/25/16	HET	6.46	

Well Number (Screen Interval)	Date	Sampler	Metals	
			Total Arsenic 6010B mg/Kg	Total Mercury 7471A mg/Kg
LDNR Standards ¹	N/A	N/A	10	10
LDEQ Standards ²	N/A	N/A	12	2.3
GC-2 (0-2)	03/02/16	ICON	10.6	8.81
GC-2 (0-2)	03/02/16	HET	6.15	19.587
GC-2 (6-8)	03/02/16	ICON	11.2	<0.10
GC-2 (6-8)	03/02/16	HET	—	—
GC-2 (12-14)	03/02/16	ICON	16.2	<0.10
GC-2 (12-14)	03/02/16	HET	7.71	0.20029
GC-2 (20-22)	03/02/16	ICON	—	—
GC-2 (20-22)	03/02/16	HET	5.89	0.06674

Well Number (Screen Interval)	Date	Sampler	Metals	
			Total Arsenic 6010B mg/Kg	Total Barium 6010B mg/Kg
LDNR Standards ¹	N/A	N/A	10	N/A
LDEQ Standards ²	N/A	N/A	12	550
GC-5 (0-2)	03/03/16	ICON	10.2	2480
GC-5 (0-2)	03/03/16	HET	5.65	633
GC-5 (4-6)	03/03/16	ICON	11.9	223
GC-5 (4-6)	03/03/16	HET	8.32	175
GC-5 (8-10)	03/03/16	ICON	13	203
GC-5 (8-10)	03/03/16	HET	6.63	117
GC-5 (16-18)	03/03/16	ICON	10.7	212
GC-5 (16-18)	03/03/16	HET	6.7	147

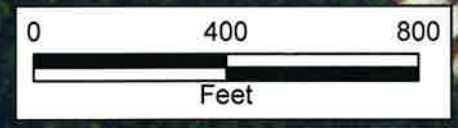
Explanation

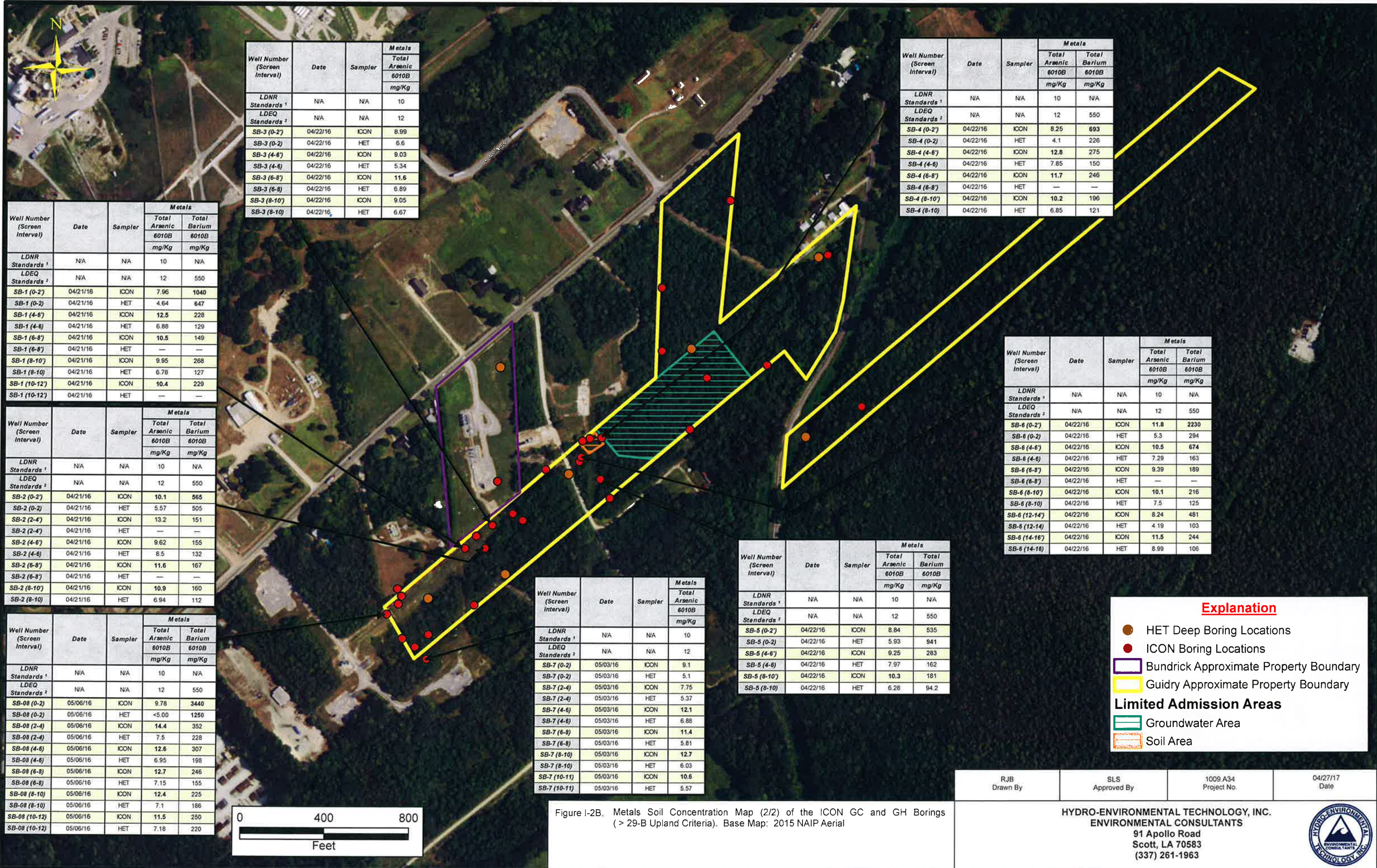
- HET Deep Boring Locations
- ICON Boring Locations
- ▭ Bundrick Approximate Property Boundary
- ▭ Guidry Approximate Property Boundary
- Limited Admission Areas**
- ▭ Groundwater Area
- ▭ Soil Area

RJB Drawn By	SLS Approved By	1009.A34 Project No.	04/27/17 Date
-----------------	--------------------	-------------------------	------------------

HYDRO-ENVIRONMENTAL TECHNOLOGY, INC.
ENVIRONMENTAL CONSULTANTS
91 Apollo Road
Scott, LA 70583
(337) 261-1963

Figure I-2A. Metals Soil Concentration Map (1/2) of the ICON SB Borings (> 29-B Upland Criteria). Base Map: 2015 NAIP Aerial





Well Number (Screen Interval)	Date	Sampler	Metals	
			Total Arsenic	Total Barium
			6010B	6010B
LDNR Standards 1	N/A	N/A	10	N/A
LDEQ Standards 2	N/A	N/A	12	550
SB-3 (0-2')	04/22/16	ICON	8.99	
SB-3 (0-2')	04/22/16	HET	6.6	
SB-3 (4-6')	04/22/16	ICON	9.03	
SB-3 (4-6')	04/22/16	HET	5.34	
SB-3 (6-8')	04/22/16	ICON	11.6	
SB-3 (6-8')	04/22/16	HET	6.89	
SB-3 (8-10')	04/22/16	ICON	9.05	
SB-3 (8-10')	04/22/16	HET	6.67	

Well Number (Screen Interval)	Date	Sampler	Metals	
			Total Arsenic	Total Barium
			6010B	6010B
LDNR Standards 1	N/A	N/A	10	N/A
LDEQ Standards 2	N/A	N/A	12	550
SB-4 (0-2')	04/22/16	ICON	8.25	693
SB-4 (0-2')	04/22/16	HET	4.1	226
SB-4 (4-6')	04/22/16	ICON	12.8	275
SB-4 (4-6')	04/22/16	HET	7.85	150
SB-4 (6-8')	04/22/16	ICON	11.7	246
SB-4 (6-8')	04/22/16	HET	—	—
SB-4 (8-10')	04/22/16	ICON	10.2	196
SB-4 (8-10')	04/22/16	HET	6.85	121

Well Number (Screen Interval)	Date	Sampler	Metals	
			Total Arsenic	Total Barium
			6010B	6010B
LDNR Standards 1	N/A	N/A	10	N/A
LDEQ Standards 2	N/A	N/A	12	550
SB-1 (0-2')	04/21/16	ICON	7.96	1040
SB-1 (0-2')	04/21/16	HET	4.64	647
SB-1 (4-6')	04/21/16	ICON	12.5	228
SB-1 (4-6')	04/21/16	HET	6.88	129
SB-1 (6-8')	04/21/16	ICON	10.5	149
SB-1 (6-8')	04/21/16	HET	—	—
SB-1 (8-10')	04/21/16	ICON	9.95	268
SB-1 (8-10')	04/21/16	HET	6.78	127
SB-1 (10-12')	04/21/16	ICON	10.4	229
SB-1 (10-12')	04/21/16	HET	—	—

Well Number (Screen Interval)	Date	Sampler	Metals	
			Total Arsenic	Total Barium
			6010B	6010B
LDNR Standards 1	N/A	N/A	10	N/A
LDEQ Standards 2	N/A	N/A	12	550
SB-2 (0-2')	04/21/16	ICON	10.1	565
SB-2 (0-2')	04/21/16	HET	5.57	505
SB-2 (2-4')	04/21/16	ICON	13.2	151
SB-2 (2-4')	04/21/16	HET	—	—
SB-2 (4-6')	04/21/16	ICON	9.62	155
SB-2 (4-6')	04/21/16	HET	8.5	132
SB-2 (6-8')	04/21/16	ICON	11.6	167
SB-2 (6-8')	04/21/16	HET	—	—
SB-2 (8-10')	04/21/16	ICON	10.9	160
SB-2 (8-10')	04/21/16	HET	6.94	112

Well Number (Screen Interval)	Date	Sampler	Metals	
			Total Arsenic	Total Barium
			6010B	6010B
LDNR Standards 1	N/A	N/A	10	N/A
LDEQ Standards 2	N/A	N/A	12	550
SB-08 (0-2')	05/06/16	ICON	9.78	3440
SB-08 (0-2')	05/06/16	HET	<5.00	1250
SB-08 (2-4')	05/06/16	ICON	14.4	352
SB-08 (2-4')	05/06/16	HET	7.5	228
SB-08 (4-6')	05/06/16	ICON	12.6	307
SB-08 (4-6')	05/06/16	HET	6.95	198
SB-08 (6-8')	05/06/16	ICON	12.7	246
SB-08 (6-8')	05/06/16	HET	7.15	155
SB-08 (8-10')	05/06/16	ICON	12.4	225
SB-08 (8-10')	05/06/16	HET	7.1	186
SB-08 (10-12')	05/06/16	ICON	11.5	250
SB-08 (10-12')	05/06/16	HET	7.18	220

Well Number (Screen Interval)	Date	Sampler	Metals	
			Total Arsenic	Total Barium
			6010B	6010B
LDNR Standards 1	N/A	N/A	10	N/A
LDEQ Standards 2	N/A	N/A	12	550
SB-7 (0-2')	05/03/16	ICON	9.1	
SB-7 (0-2')	05/03/16	HET	5.1	
SB-7 (2-4')	05/03/16	ICON	7.75	
SB-7 (2-4')	05/03/16	HET	5.37	
SB-7 (4-6')	05/03/16	ICON	12.1	
SB-7 (4-6')	05/03/16	HET	6.88	
SB-7 (6-8')	05/03/16	ICON	11.4	
SB-7 (6-8')	05/03/16	HET	5.81	
SB-7 (8-10')	05/03/16	ICON	12.7	
SB-7 (8-10')	05/03/16	HET	6.03	
SB-7 (10-11')	05/03/16	ICON	10.6	
SB-7 (10-11')	05/03/16	HET	5.57	

Well Number (Screen Interval)	Date	Sampler	Metals	
			Total Arsenic	Total Barium
			6010B	6010B
LDNR Standards 1	N/A	N/A	10	N/A
LDEQ Standards 2	N/A	N/A	12	550
SB-5 (0-2')	04/22/16	ICON	8.84	535
SB-5 (0-2')	04/22/16	HET	5.93	941
SB-5 (4-6')	04/22/16	ICON	9.25	283
SB-5 (4-6')	04/22/16	HET	7.97	162
SB-5 (8-10')	04/22/16	ICON	10.3	181
SB-5 (8-10')	04/22/16	HET	6.28	94.2

Well Number (Screen Interval)	Date	Sampler	Metals	
			Total Arsenic	Total Barium
			6010B	6010B
LDNR Standards 1	N/A	N/A	10	N/A
LDEQ Standards 2	N/A	N/A	12	550
SB-6 (0-2')	04/22/16	ICON	11.8	2230
SB-6 (0-2')	04/22/16	HET	5.3	294
SB-6 (4-6')	04/22/16	ICON	10.5	674
SB-6 (4-6')	04/22/16	HET	7.29	163
SB-6 (6-8')	04/22/16	ICON	9.39	189
SB-6 (6-8')	04/22/16	HET	—	—
SB-6 (8-10')	04/22/16	ICON	10.1	216
SB-6 (8-10')	04/22/16	HET	7.5	125
SB-6 (12-14')	04/22/16	ICON	8.24	481
SB-6 (12-14')	04/22/16	HET	4.19	103
SB-6 (14-16')	04/22/16	ICON	11.5	244
SB-6 (14-16')	04/22/16	HET	8.99	106

Explanation

- HET Deep Boring Locations
- ICON Boring Locations
- ▭ Bundrick Approximate Property Boundary
- ▭ Guidry Approximate Property Boundary

Limited Admission Areas

- ▨ Groundwater Area
- ▨ Soil Area

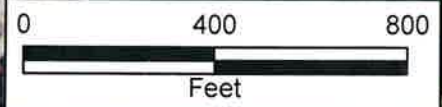
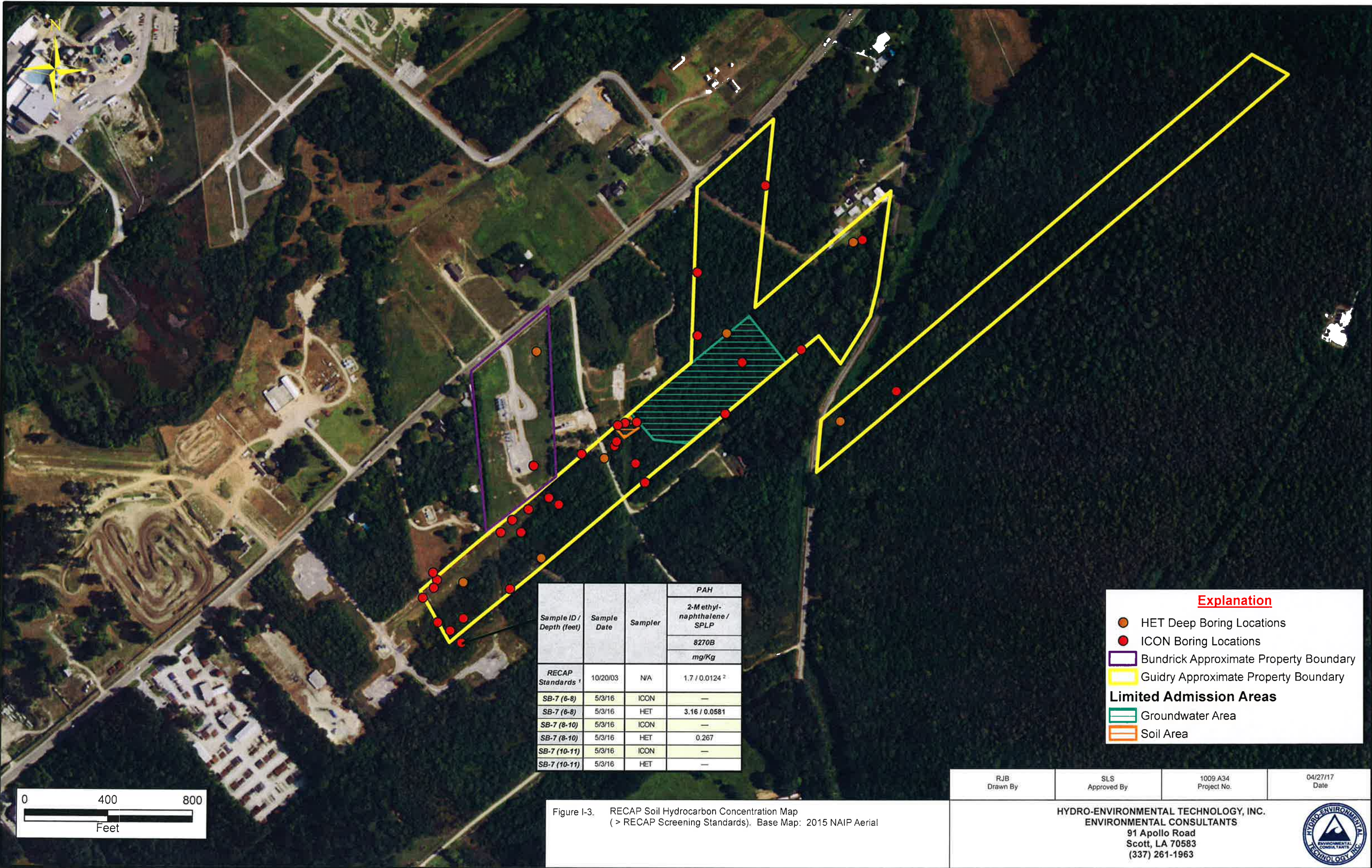


Figure I-2B. Metals Soil Concentration Map (2/2) of the ICON GC and GH Borings (> 29-B Upland Criteria). Base Map: 2015 NAIP Aerial

RJB Drawn By	SLS Approved By	1009 A34 Project No.	04/27/17 Date
-----------------	--------------------	-------------------------	------------------

HYDRO-ENVIRONMENTAL TECHNOLOGY, INC.
ENVIRONMENTAL CONSULTANTS
91 Apollo Road
Scott, LA 70583
(337) 261-1963



Sample ID / Depth (feet)	Sample Date	Sampler	PAH	
			2-Methyl-naphthalene / SPLP	
			mg/Kg	
RECAP Standards 1	10/20/03	N/A	1.7 / 0.0124 2	
SB-7 (6-8)	5/3/16	ICON	—	
SB-7 (6-8)	5/3/16	HET	3.16 / 0.0581	
SB-7 (8-10)	5/3/16	ICON	—	
SB-7 (8-10)	5/3/16	HET	0.267	
SB-7 (10-11)	5/3/16	ICON	—	
SB-7 (10-11)	5/3/16	HET	—	

Explanation

- HET Deep Boring Locations
- ICON Boring Locations
- Bundrick Approximate Property Boundary
- Guidry Approximate Property Boundary

Limited Admission Areas

- Groundwater Area
- Soil Area



Figure I-3. RECAP Soil Hydrocarbon Concentration Map (> RECAP Screening Standards). Base Map: 2015 NAIP Aerial

RJB Drawn By	SLS Approved By	1009.A34 Project No.	04/27/17 Date
-----------------	--------------------	-------------------------	------------------

HYDRO-ENVIRONMENTAL TECHNOLOGY, INC.
ENVIRONMENTAL CONSULTANTS
 91 Apollo Road
 Scott, LA 70583
 (337) 261-1963

Well Number (Screen Interval)	Date	Sampler	Salinity	
			Chloride	TDS
			9056A mg/L	2540C mg/L
RECAP Standards †	10/20/03	N/A	250 ²	500 ²
GC-5 (30-40')	3/14/16	HET	1140	2790
GC-5 (30-40')	3/14/16	ICON	1290	2820
GC-5 (30-40')	8/23/16	HET	1250	2890
GC-5 (30-40')	8/23/16	ICON	1320	2980
GC-5 (30-40')	11/23/16	HET	1370	3320
GC-5 (30-40')	11/23/16	ICON	1310	2500

Well Number (Screen Interval)	Date	Sampler	Salinity	
			Chloride	TDS
			9056A mg/L	2540C mg/L
RECAP Standards †	10/20/03	N/A	250 ²	500 ²
GC-13 (28-38')	5/4/16	HET	230	785
GC-13 (28-38')	5/4/16	ICON	241	815

Well Number (Screen Interval)	Date	Sampler	Salinity	
			Chloride	TDS
			9056A mg/L	2540C mg/L
RECAP Standards †	10/20/03	N/A	250 ²	500 ²
GC-16 (30-40')	5/9/16	HET	201	879
GC-16 (30-40')	5/9/16	ICON	241	—

Well Number (Screen Interval)	Date	Sampler	Salinity	
			Chloride	TDS
			9056A mg/L	2540C mg/L
RECAP Standards †	10/20/03	N/A	250 ²	500 ²
GC-15 (30-40')	5/5/16	HET	122	698
GC-15 (30-40')	5/5/16	ICON	135	545

Well Number (Screen Interval)	Date	Sampler	Salinity	
			Chloride	TDS
			9056A mg/L	2540C mg/L
RECAP Standards †	10/20/03	N/A	250 ²	500 ²
GC-14 (30-40')	5/5/16	HET	139	636
GC-14 (30-40')	5/5/16	ICON	148	653

Well Number (Screen Interval)	Date	Sampler	Salinity	
			Chloride	TDS
			9056A mg/L	2540C mg/L
RECAP Standards †	10/20/03	N/A	250 ²	500 ²
GC-7 (28-38')	5/5/16	HET	1240	2970
GC-7 (28-38')	5/5/16	ICON	1320	2850
GC-7 (28-38')	8/25/16	HET	1520	3730
GC-7 (28-38')	8/25/16	ICON	1510	3670
GC-7 (28-38')	11/22/16	HET	1420	3380
GC-7 (28-38')	11/22/16	ICON	1420	3180

Well Number (Screen Interval)	Date	Sampler	Salinity	
			Chloride	TDS
			9056A mg/L	2540C mg/L
RECAP Standards †	10/20/03	N/A	250 ²	500 ²
GC-1 (28-38')	3/14/16	HET	153	682
GC-1 (28-38')	3/14/16	ICON	131	676

Well Number (Screen Interval)	Date	Sampler	Salinity	
			Chloride	TDS
			9056A mg/L	2540C mg/L
RECAP Standards †	10/20/03	N/A	250 ²	500 ²
GC-9 (28-38')	3/15/16	HET	188	836
GC-9 (28-38')	3/15/16	ICON	212	900

Well Number (Screen Interval)	Date	Sampler	Salinity	
			Chloride	TDS
			9056A mg/L	2540C mg/L
RECAP Standards †	10/20/03	N/A	250 ²	500 ²
GC-8 (28-38')	3/15/16	HET	459	1270
GC-8 (28-38')	3/15/16	ICON	510	1370
GC-8 (28-38')	8/23/16	HET	581	1460
GC-8 (28-38')	8/23/16	ICON	593	1530
GC-8 (28-38')	11/21/16	HET	593	1570
GC-8 (28-38')	11/21/16	ICON	539	1400

Well Number (Screen Interval)	Date	Sampler	Salinity	
			Chloride	TDS
			9056A mg/L	2540C mg/L
RECAP Standards †	10/20/03	N/A	250 ²	500 ²
GC-10 (28-38')	5/5/16	HET	712	1850
GC-10 (28-38')	5/5/16	ICON	790	1700
GC-10 (28-38')	8/24/16	HET	897	2210
GC-10 (28-38')	8/24/16	ICON	1040	2160
GC-10 (28-38')	11/22/16	HET	1100	2400
GC-10 (28-38')	11/22/16	ICON	1130	2470

Well Number (Screen Interval)	Date	Sampler	Salinity	
			Chloride	TDS
			9056A mg/L	2540C mg/L
RECAP Standards †	10/20/03	N/A	250 ²	500 ²
GC-6 (28-38')	3/14/16	HET	1370	3240
GC-6 (28-38')	3/14/16	ICON	1500	3290
GC-6 (28-38')	9/9/16	HET	1140	3340
GC-6 (28-38')	9/9/16	ICON	1250	2970
GC-6 (28-38')	11/22/16	HET	979	2810
GC-6 (28-38')	11/22/16	ICON	1020	2480

Well Number (Screen Interval)	Date	Sampler	Salinity	
			Chloride	TDS
			9056A mg/L	2540C mg/L
RECAP Standards †	10/20/03	N/A	250 ²	500 ²
GC-3 (28-38')	3/15/16	HET	303	954
GC-3 (28-38')	3/15/16	ICON	344	985
GC-3 (28-38')	8/24/16	HET	387	1070
GC-3 (28-38')	8/24/16	ICON	407	1100
GC-3 (28-38')	11/23/16	HET	446	1300
GC-3 (28-38')	11/23/16	ICON	468	1240

Well Number (Screen Interval)	Date	Sampler	Salinity	
			Chloride	TDS
			9056A mg/L	2540C mg/L
RECAP Standards †	10/20/03	N/A	250 ²	500 ²
GC-12 (28-38')	5/4/16	HET	501	1330
GC-12 (28-38')	5/4/16	ICON	515	1240
GC-12 (28-38')	8/23/16	HET	551	1430
GC-12 (28-38')	8/23/16	ICON	584	1440
GC-12 (28-38')	11/21/16	HET	297	993
GC-12 (28-38')	11/21/16	ICON	304	965

Well Number (Screen Interval)	Date	Sampler	Salinity	
			Chloride	TDS
			9056A mg/L	2540C mg/L
RECAP Standards †	10/20/03	N/A	250 ²	500 ²
GC-4 (28-38')	3/15/16	HET	2120	4250
GC-4 (28-38')	3/15/16	ICON	2520	4520
GC-4 (28-38')	8/24/16	HET	1670	3210
GC-4 (28-38')	8/24/16	ICON	1800	3420
GC-4 (28-38')	11/22/16	HET	2130	5040
GC-4 (28-38')	11/22/16	ICON	2680	4890

Well Number (Screen Interval)	Date	Sampler	Salinity	
			Chloride	TDS
			9056A mg/L	2540C mg/L
RECAP Standards †	10/20/03	N/A	250 ²	500 ²
GC-11 (28-38')	5/5/16	HET	44.7	546
GC-11 (28-38')	5/5/16	ICON	46.5	485

Well Number (Screen Interval)	Date	Sampler	Salinity	
			Chloride	TDS
			9056A mg/L	2540C mg/L
RECAP Standards †	10/20/03	N/A	250 ²	500 ²
GC-2 (28-38')	3/14/16	HET	163	797
GC-2 (28-38')	3/14/16	ICON	184	731

Explanation

- HET Monitor Well Locations
- ICON Monitor Well Locations
- Bundrick Approximate Property Boundary
- Guidry Approximate Property Boundary

Limited Admission Areas

- Groundwater Area
- Soil Area

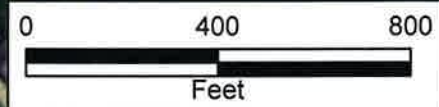
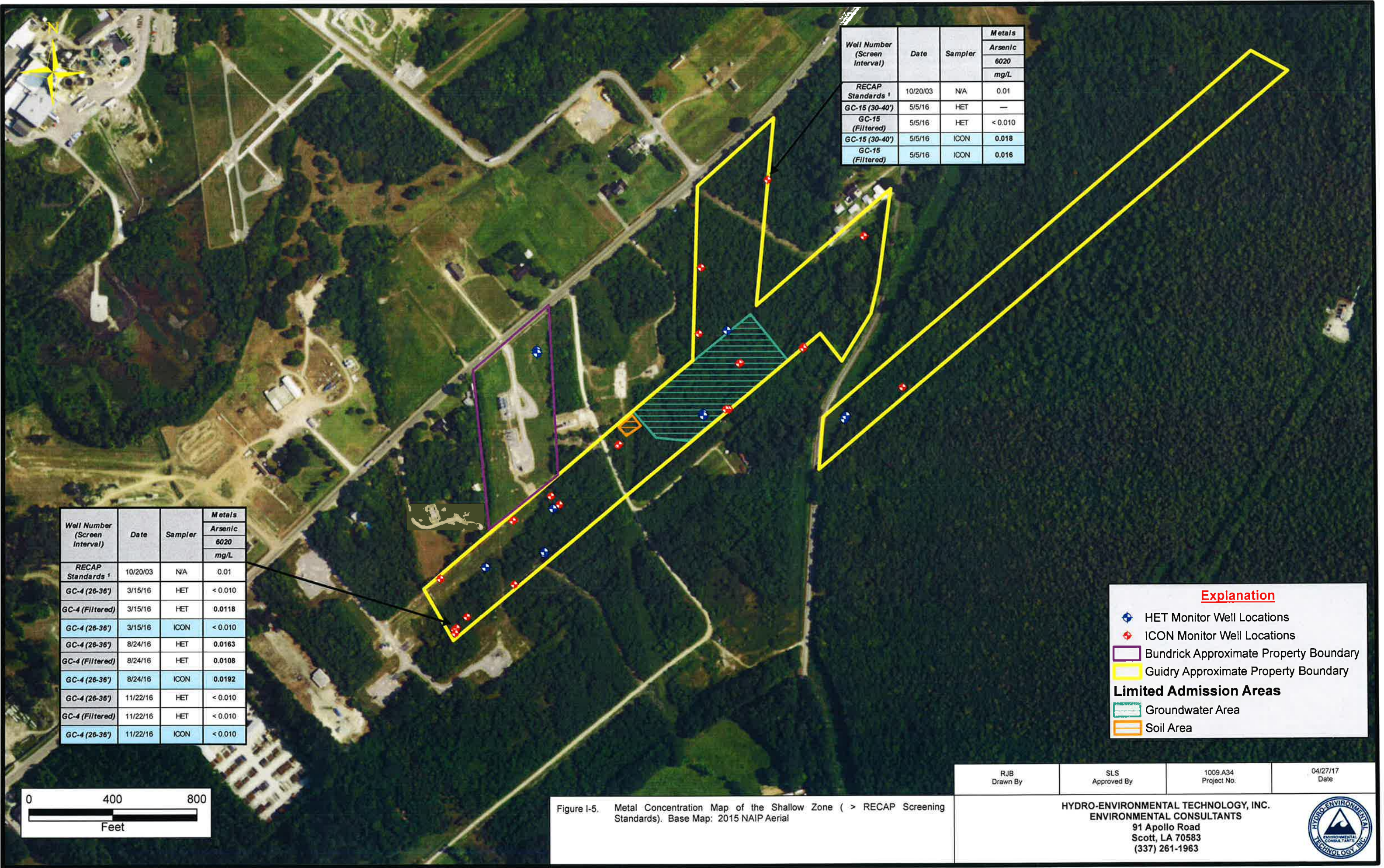


Figure I-4. Chloride Concentration Map of the Shallow Zone (> EPA Secondary Drinking Water Standards). Base Map: 2015 NAIP Aerial

RJB Drawn By	SLS Approved By	1009.A34 Project No.	04/27/17 Date
-----------------	--------------------	-------------------------	------------------

HYDRO-ENVIRONMENTAL TECHNOLOGY, INC.
ENVIRONMENTAL CONSULTANTS
91 Apollo Road
Scott, LA 70583
(337) 261-1963



Well Number (Screen Interval)	Date	Sampler	Metals
			Arsenic 6020 mg/L
RECAP Standards 1	10/20/03	N/A	0.01
GC-15 (30-40')	5/5/16	HET	—
GC-15 (Filtered)	5/5/16	HET	< 0.010
GC-15 (30-40')	5/5/16	ICON	0.018
GC-15 (Filtered)	5/5/16	ICON	0.016

Well Number (Screen Interval)	Date	Sampler	Metals
			Arsenic 6020 mg/L
RECAP Standards 1	10/20/03	N/A	0.01
GC-4 (26-36')	3/15/16	HET	< 0.010
GC-4 (Filtered)	3/15/16	HET	0.0118
GC-4 (26-36')	3/15/16	ICON	< 0.010
GC-4 (26-36')	8/24/16	HET	0.0163
GC-4 (Filtered)	8/24/16	HET	0.0108
GC-4 (26-36')	8/24/16	ICON	0.0192
GC-4 (26-36')	11/22/16	HET	< 0.010
GC-4 (Filtered)	11/22/16	HET	< 0.010
GC-4 (26-36')	11/22/16	ICON	< 0.010

Explanation

- ◆ HET Monitor Well Locations
- ICON Monitor Well Locations
- Bundrick Approximate Property Boundary
- Guidry Approximate Property Boundary

Limited Admission Areas

- Groundwater Area
- Soil Area

RJB Drawn By	SLS Approved By	1009.A34 Project No.	04/27/17 Date
-----------------	--------------------	-------------------------	------------------

Figure I-5. Metal Concentration Map of the Shallow Zone (> RECAP Screening Standards). Base Map: 2015 NAIP Aerial

HYDRO-ENVIRONMENTAL TECHNOLOGY, INC.
 ENVIRONMENTAL CONSULTANTS
 91 Apollo Road
 Scott, LA 70583
 (337) 261-1963



Well Number (Screen Interval)	Date	Sampler	Salinity	
			Chloride	TDS
			9056A mg/L	2540C mg/L
RECAP Standards ¹	10/20/03	N/A	250 ²	500 ²
MW3 (50-60)	9/28/16	HET	186	651
MW3 (50-60)	9/28/16	ICON	155	642

Well Number (Screen Interval)	Date	Sampler	Salinity	
			Chloride	TDS
			9056A mg/L	2540C mg/L
RECAP Standards ¹	10/20/03	N/A	250 ²	500 ²
MW7 (58-63)	9/28/16	HET	1090	1880
MW7 (58-63)	9/29/16	ICON	938	1960
MW7 (58-63)	11/21/16	HET	1470	2970
MW7 (58-63)	11/21/16	ICON	1570	3110

Well Number (Screen Interval)	Date	Sampler	Salinity	
			Chloride	TDS
			9056A mg/L	2540C mg/L
RECAP Standards ¹	10/20/03	N/A	250 ²	500 ²
GC-14B (50-60)	6/21/16	HET	26.4	454
GC-14B (50-60)	6/21/16	ICON	28.2	416

Well Number (Screen Interval)	Date	Sampler	Salinity	
			Chloride	TDS
			9056A mg/L	2540C mg/L
RECAP Standards ¹	10/20/03	N/A	250 ²	500 ²
GC-9B (50-60)	6/20/16	HET	141	666
GC-9B (50-60)	6/20/16	ICON	—	—

Well Number (Screen Interval)	Date	Sampler	Salinity	
			Chloride	TDS
			9056A mg/L	2540C mg/L
RECAP Standards ¹	10/20/03	N/A	250 ²	500 ²
GC-7B (50-60)	6/21/16	HET	146	717
GC-7B (50-60)	6/21/16	ICON	166	629

Well Number (Screen Interval)	Date	Sampler	Salinity	
			Chloride	TDS
			9056A mg/L	2540C mg/L
RECAP Standards ¹	10/20/03	N/A	250 ²	500 ²
GC-8D (50-60)	5/4/16	HET	5120	9890
GC-8D (50-60)	5/4/16	ICON	5760	9650
GC-8D (50-60)	8/23/16	HET	5500	10600
GC-8D (50-60)	8/23/16	ICON	6160	11200
GC-8D (50-60)	11/22/16	HET	7600	14100
GC-8D (50-60)	11/22/16	ICON	7260	12300

Well Number (Screen Interval)	Date	Sampler	Salinity	
			Chloride	TDS
			9056A mg/L	2540C mg/L
RECAP Standards ¹	10/20/03	N/A	250 ²	500 ²
MW6 (55-65)	9/28/16	HET	236	798
MW6 (55-65)	9/29/16	ICON	215	722

Well Number (Screen Interval)	Date	Sampler	Salinity	
			Chloride	TDS
			9056A mg/L	2540C mg/L
RECAP Standards ¹	10/20/03	N/A	250 ²	500 ²
GC-4B (50-60)	6/21/16	HET	80.2	522
GC-4B (50-60)	6/21/16	ICON	90.8	497

Well Number (Screen Interval)	Date	Sampler	Salinity	
			Chloride	TDS
			9056A mg/L	2540C mg/L
RECAP Standards ¹	10/20/03	N/A	250 ²	500 ²
MW2 (50-60)	9/27/16	HET	295	944
MW2 (50-60)	9/27/16	ICON	332	1080
MW2 (50-60)	11/21/16	HET	305	1020
MW2 (50-60)	11/21/16	ICON	307	1040

Well Number (Screen Interval)	Date	Sampler	Salinity	
			Chloride	TDS
			9056A mg/L	2540C mg/L
RECAP Standards ¹	10/20/03	N/A	250 ²	500 ²
GC-5B (56-66)	6/20/16	HET	584	2020
GC-5B (56-66)	6/20/16	ICON	629	1520
GC-5B (56-66)	8/22/16	HET	399	1230
GC-5B (56-66)	8/22/16	ICON	427	1160
GC-5B (56-66)	11/23/16	HET	368	1410
GC-5B (56-66)	11/23/16	ICON	356	1080

Well Number (Screen Interval)	Date	Sampler	Salinity	
			Chloride	TDS
			9056A mg/L	2540C mg/L
RECAP Standards ¹	10/20/03	N/A	250 ²	500 ²
GC-12D (50-60)	5/4/16	HET	3410	6430
GC-12D (50-60)	5/4/16	ICON	3920	6880
GC-12D (50-60)	8/24/16	HET	3110	6270
GC-12D (50-60)	8/24/16	ICON	3860	7220
GC-12D (50-60)	11/22/16	HET	3400	6270
GC-12D (50-60)	11/22/16	ICON	3270	6080

Explanation

- HET Monitor Well Locations
- ICON Monitor Well Locations
- Bundrick Approximate Property Boundary
- Guidry Approximate Property Boundary

Limited Admission Areas

- Groundwater Area
- Soil Area

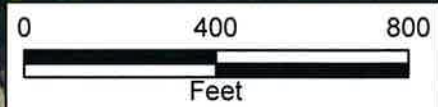
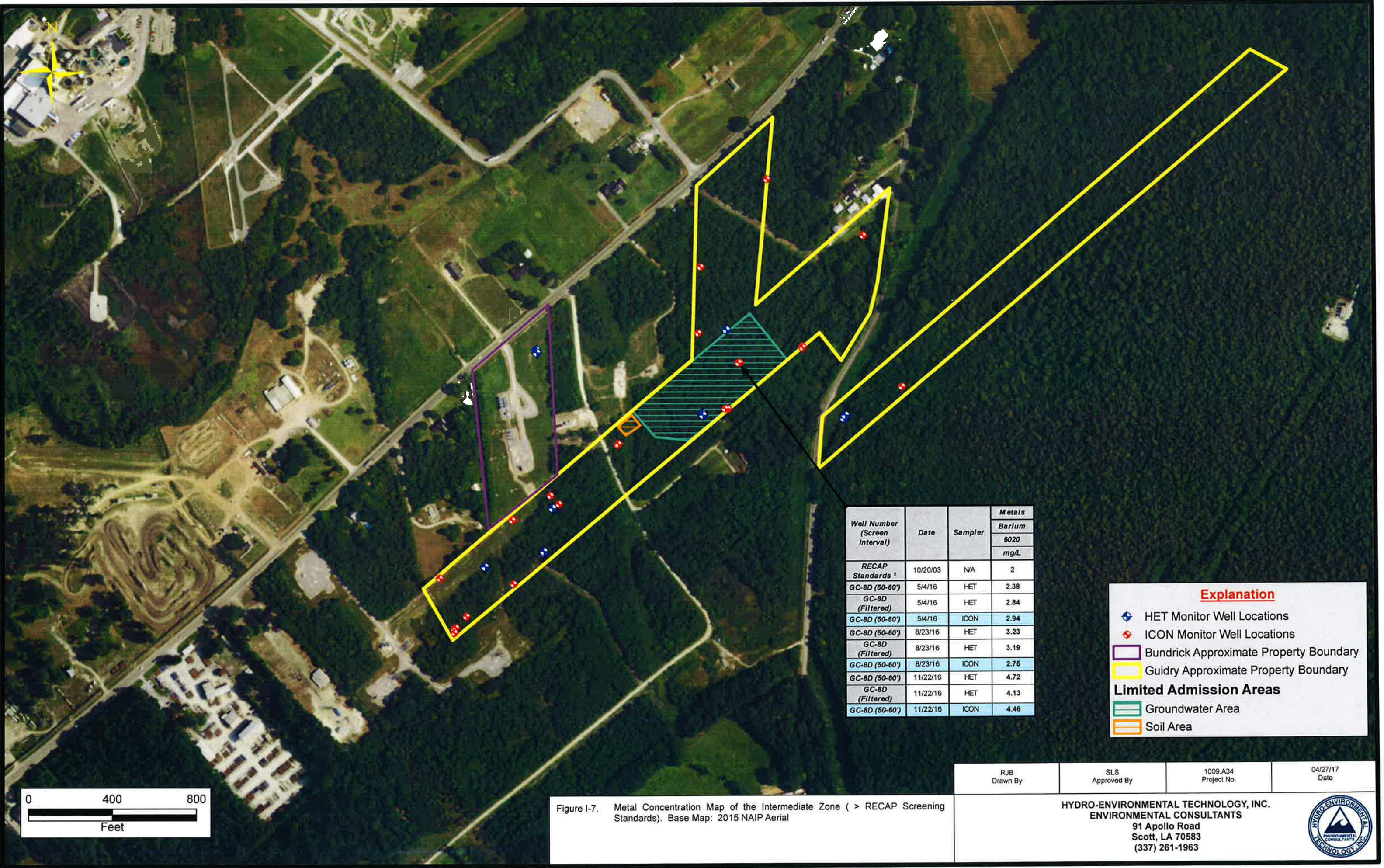


Figure I-6. Chloride and TDS Concentration Map of the Intermediate Zone (> EPA Secondary Drinking Water Standards). Base Map: 2015 NAIP Aerial

RJB Drawn By	SLS Approved By	1009.A34 Project No.	04/27/17 Date
-----------------	--------------------	-------------------------	------------------

HYDRO-ENVIRONMENTAL TECHNOLOGY, INC.
ENVIRONMENTAL CONSULTANTS
91 Apollo Road
Scott, LA 70583
(337) 261-1963



Well Number (Screen Interval)	Date	Sampler	Metals
			Barium
			6020 mg/L
RECAP Standards ¹	10/20/03	N/A	2
GC-8D (50-60')	5/4/16	HET	2.38
GC-8D (Filtered)	5/4/16	HET	2.84
GC-8D (50-60')	5/4/16	ICON	2.94
GC-8D (50-60')	8/23/16	HET	3.23
GC-8D (Filtered)	8/23/16	HET	3.19
GC-8D (50-60')	8/23/16	ICON	2.75
GC-8D (50-60')	11/22/16	HET	4.72
GC-8D (Filtered)	11/22/16	HET	4.13
GC-8D (50-60')	11/22/16	ICON	4.46

Explanation

- ◆ HET Monitor Well Locations
- ◆ ICON Monitor Well Locations
- Bundrick Approximate Property Boundary
- Guidry Approximate Property Boundary

Limited Admission Areas

- Groundwater Area
- Soil Area

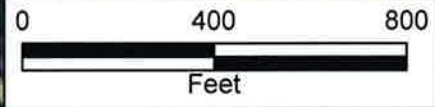
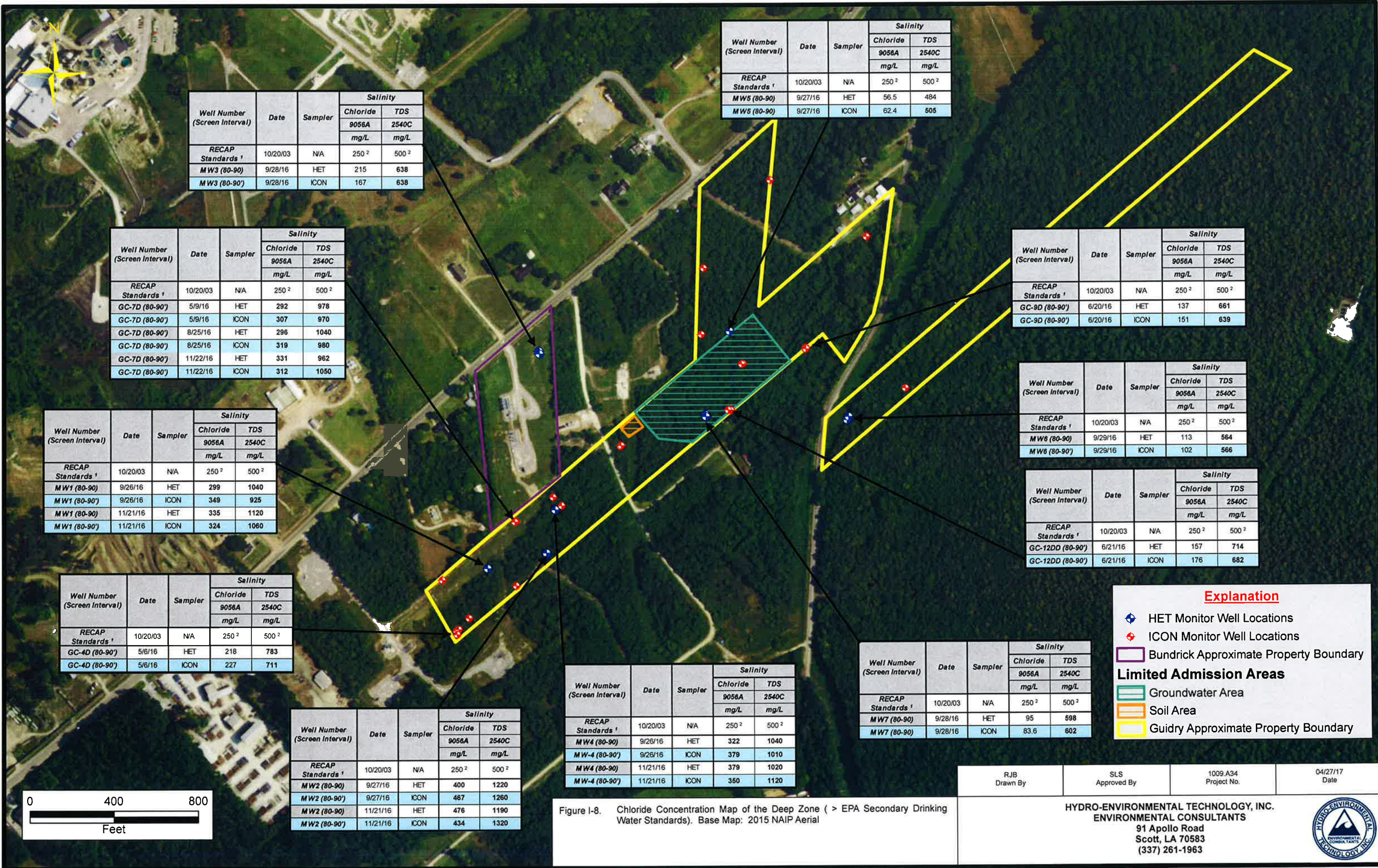


Figure I-7. Metal Concentration Map of the Intermediate Zone (> RECAP Screening Standards). Base Map: 2015 NAIP Aerial

RJB Drawn By	SLS Approved By	1009.A34 Project No.	04/27/17 Date
HYDRO-ENVIRONMENTAL TECHNOLOGY, INC. ENVIRONMENTAL CONSULTANTS 91 Apollo Road Scott, LA 70583 (337) 261-1963			



Well Number (Screen Interval)	Date	Sampler	Salinity	
			Chloride	TDS
			9056A mg/L	2540C mg/L
RECAP Standards 1	10/20/03	N/A	250 ²	500 ²
MW3 (80-90)	9/28/16	HET	215	638
MW3 (80-90)	9/28/16	ICON	167	638

Well Number (Screen Interval)	Date	Sampler	Salinity	
			Chloride	TDS
			9056A mg/L	2540C mg/L
RECAP Standards 1	10/20/03	N/A	250 ²	500 ²
MW5 (80-90)	9/27/16	HET	56.5	484
MW5 (80-90)	9/27/16	ICON	62.4	505

Well Number (Screen Interval)	Date	Sampler	Salinity	
			Chloride	TDS
			9056A mg/L	2540C mg/L
RECAP Standards 1	10/20/03	N/A	250 ²	500 ²
GC-7D (80-90')	5/9/16	HET	292	978
GC-7D (80-90')	5/9/16	ICON	307	970
GC-7D (80-90')	8/25/16	HET	296	1040
GC-7D (80-90')	8/25/16	ICON	319	980
GC-7D (80-90')	11/22/16	HET	331	962
GC-7D (80-90')	11/22/16	ICON	312	1050

Well Number (Screen Interval)	Date	Sampler	Salinity	
			Chloride	TDS
			9056A mg/L	2540C mg/L
RECAP Standards 1	10/20/03	N/A	250 ²	500 ²
GC-9D (80-90')	6/20/16	HET	137	661
GC-9D (80-90')	6/20/16	ICON	151	639

Well Number (Screen Interval)	Date	Sampler	Salinity	
			Chloride	TDS
			9056A mg/L	2540C mg/L
RECAP Standards 1	10/20/03	N/A	250 ²	500 ²
MW1 (80-90)	9/26/16	HET	299	1040
MW1 (80-90)	9/26/16	ICON	349	925
MW1 (80-90)	11/21/16	HET	335	1120
MW1 (80-90)	11/21/16	ICON	324	1060

Well Number (Screen Interval)	Date	Sampler	Salinity	
			Chloride	TDS
			9056A mg/L	2540C mg/L
RECAP Standards 1	10/20/03	N/A	250 ²	500 ²
MW6 (80-90)	9/29/16	HET	113	564
MW6 (80-90)	9/29/16	ICON	102	566

Well Number (Screen Interval)	Date	Sampler	Salinity	
			Chloride	TDS
			9056A mg/L	2540C mg/L
RECAP Standards 1	10/20/03	N/A	250 ²	500 ²
GC-12DD (80-90')	6/21/16	HET	157	714
GC-12DD (80-90')	6/21/16	ICON	176	682

Well Number (Screen Interval)	Date	Sampler	Salinity	
			Chloride	TDS
			9056A mg/L	2540C mg/L
RECAP Standards 1	10/20/03	N/A	250 ²	500 ²
GC-4D (80-90')	5/6/16	HET	218	783
GC-4D (80-90')	5/6/16	ICON	227	711

Well Number (Screen Interval)	Date	Sampler	Salinity	
			Chloride	TDS
			9056A mg/L	2540C mg/L
RECAP Standards 1	10/20/03	N/A	250 ²	500 ²
MW2 (80-90)	9/27/16	HET	400	1220
MW2 (80-90)	9/27/16	ICON	467	1260
MW2 (80-90)	11/21/16	HET	476	1190
MW2 (80-90)	11/21/16	ICON	434	1320

Well Number (Screen Interval)	Date	Sampler	Salinity	
			Chloride	TDS
			9056A mg/L	2540C mg/L
RECAP Standards 1	10/20/03	N/A	250 ²	500 ²
MW4 (80-90)	9/26/16	HET	322	1040
MW-4 (80-90')	9/26/16	ICON	379	1010
MW4 (80-90)	11/21/16	HET	379	1020
MW-4 (80-90')	11/21/16	ICON	350	1120

Well Number (Screen Interval)	Date	Sampler	Salinity	
			Chloride	TDS
			9056A mg/L	2540C mg/L
RECAP Standards 1	10/20/03	N/A	250 ²	500 ²
MW7 (80-90)	9/28/16	HET	95	598
MW7 (80-90)	9/28/16	ICON	83.6	602

Explanation

- HET Monitor Well Locations
- ICON Monitor Well Locations
- Bundrick Approximate Property Boundary

Limited Admission Areas

- Groundwater Area
- Soil Area
- Guidry Approximate Property Boundary

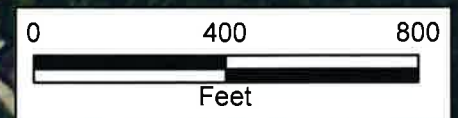
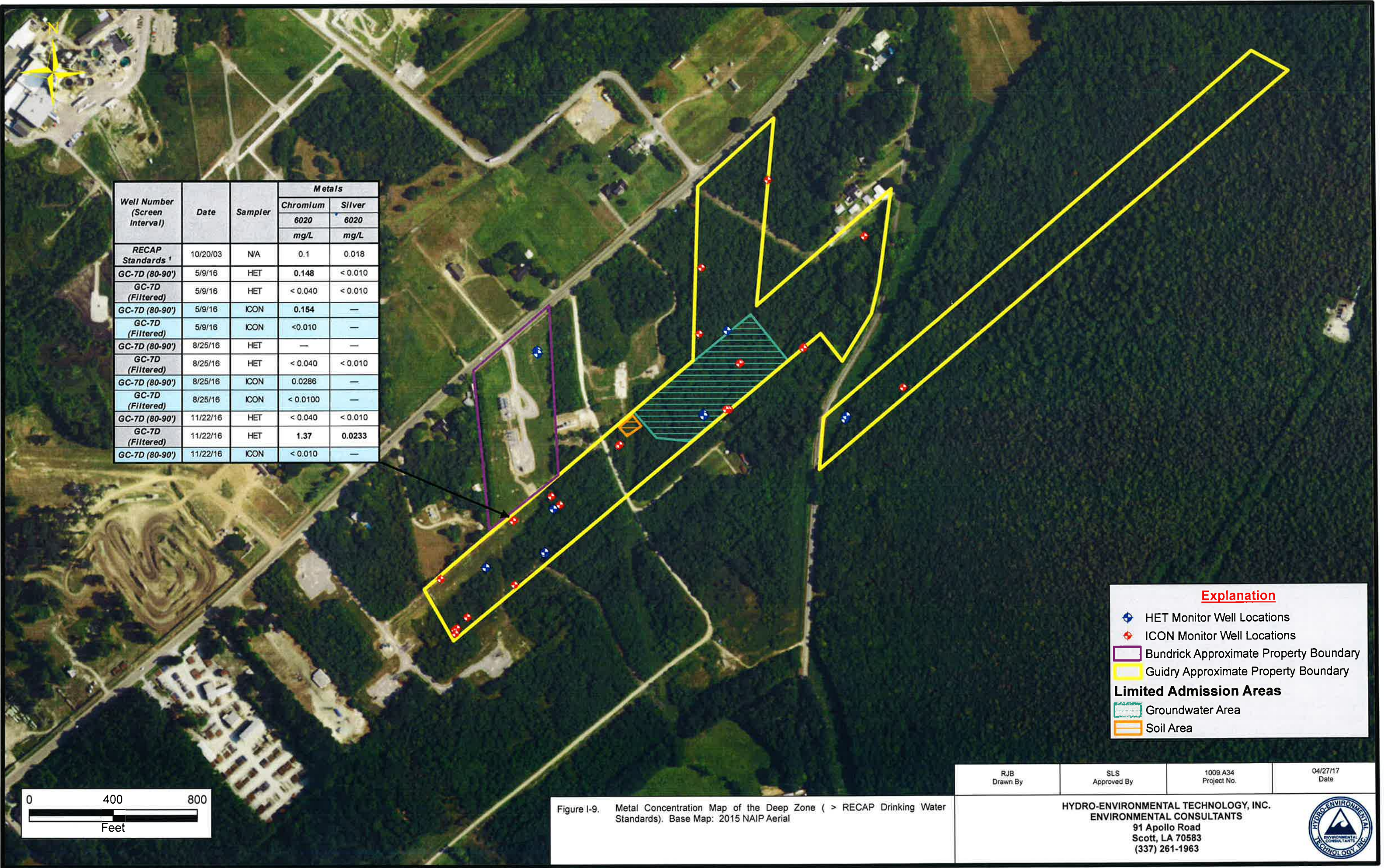


Figure I-8. Chloride Concentration Map of the Deep Zone (> EPA Secondary Drinking Water Standards). Base Map: 2015 NAIP Aerial

RJB Drawn By	SLS Approved By	1009.A34 Project No.	04/27/17 Date
-----------------	--------------------	-------------------------	------------------

HYDRO-ENVIRONMENTAL TECHNOLOGY, INC.
ENVIRONMENTAL CONSULTANTS
91 Apollo Road
Scott, LA 70583
(337) 261-1963

Well Number (Screen Interval)	Date	Sampler	Metals	
			Chromium	Silver
			6020 mg/L	6020 mg/L
RECAP Standards †	10/20/03	N/A	0.1	0.018
GC-7D (80-90')	5/9/16	HET	0.148	< 0.010
GC-7D (Filtered)	5/9/16	HET	< 0.040	< 0.010
GC-7D (80-90')	5/9/16	ICON	0.154	—
GC-7D (Filtered)	5/9/16	ICON	<0.010	—
GC-7D (80-90')	8/25/16	HET	—	—
GC-7D (Filtered)	8/25/16	HET	< 0.040	< 0.010
GC-7D (80-90')	8/25/16	ICON	0.0286	—
GC-7D (Filtered)	8/25/16	ICON	< 0.0100	—
GC-7D (80-90')	11/22/16	HET	< 0.040	< 0.010
GC-7D (Filtered)	11/22/16	HET	1.37	0.0233
GC-7D (80-90')	11/22/16	ICON	< 0.010	—



Explanation

- ◆ HET Monitor Well Locations
- ◆ ICON Monitor Well Locations
- Bundrick Approximate Property Boundary
- Guidry Approximate Property Boundary

Limited Admission Areas

- Groundwater Area
- Soil Area

RJB Drawn By	SLS Approved By	1009.A34 Project No.	04/27/17 Date
-----------------	--------------------	-------------------------	------------------

Figure I-9. Metal Concentration Map of the Deep Zone (> RECAP Drinking Water Standards). Base Map: 2015 NAIP Aerial

HYDRO-ENVIRONMENTAL TECHNOLOGY, INC.
 ENVIRONMENTAL CONSULTANTS
 91 Apollo Road
 Scott, LA 70583
 (337) 261-1963



Well Number (Screen Interval)	Date	Sampler	Radium	
			Radium 226	Radium 228
			EPA 903	EPA 904
			pCi/L	pCi/L
RECAP Standards ¹	10/20/03	N/A	5 Combined ²	
MW3 (80-90)	9/28/16	HET	1.450	6.360
MW3 (80-90')	9/28/16	ICON	1.07	1.64

Well Number (Screen Interval)	Date	Sampler	Radium	
			Radium 226	Radium 228
			EPA 903	EPA 904
			pCi/L	pCi/L
RECAP Standards ¹	10/20/03	N/A	5 Combined ²	
MW4 (80-90)	9/26/16	HET	1.590	6.980
MW-4 (80-90')	9/26/16	ICON	1.50	2.13
MW4 (80-90)	11/21/16	HET	1.140	9.050
MW-4 (80-90')	11/21/16	ICON	—	—

Well Number (Screen Interval)	Date	Sampler	Radium	
			Radium 226	Radium 228
			EPA 903	EPA 904
			pCi/L	pCi/L
RECAP Standards ¹	10/20/03	N/A	5 Combined ²	
GC-8D (50-60')	5/4/16	HET	3.86	3.52
GC-8D (50-60')	5/4/16	ICON	3.94	3.5
GC-8D (50-60')	8/23/16	HET	3.56	5.56
GC-8D (50-60')	8/23/16	ICON	3.33	6.54
GC-8D (50-60')	11/22/16	HET	3.73	7.01
GC-8D (50-60')	11/22/16	ICON	5.37	5.66

Well Number (Screen Interval)	Date	Sampler	Radium	
			Radium 226	Radium 228
			EPA 903	EPA 904
			pCi/L	pCi/L
RECAP Standards ¹	10/20/03	N/A	5 Combined ²	
GC-12D (50-60')	5/4/16	HET	3.88	2.38
GC-12D (50-60')	5/4/16	ICON	2.94	2.08
GC-12D (50-60')	8/24/16	HET	3.18	2.86
GC-12D (50-60')	8/24/16	ICON	4.04	2.54

Well Number (Screen Interval)	Date	Sampler	Radium	
			Radium 226	Radium 228
			EPA 903	EPA 904
			pCi/L	pCi/L
RECAP Standards ¹	10/20/03	N/A	5 Combined ²	
MW7 (58-63)	9/28/16	HET	1.470	1.670
MW7 (58-63')	9/29/16	ICON	1.04	1.35
MW7 (58-63)	11/21/16	HET	4.020	1.410

Explanation

- HET Monitor Well Locations
- ICON Monitor Well Locations
- Bundrick Approximate Property Boundary
- Guidry Approximate Property Boundary

Limited Admission Areas

- Groundwater Area
- Soil Area

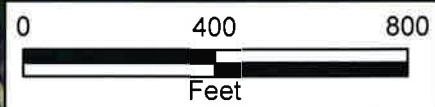


Figure I-10. Radium 226 & 228 Concentration Map of the Intermediate and Deep Zones (> EPA Drinking Water Standards). Base Map: 2015 NAIP Aerial

RJB Drawn By	SLS Approved By	1009.A34 Project No.	04/27/17 Date
-----------------	--------------------	-------------------------	------------------

HYDRO-ENVIRONMENTAL TECHNOLOGY, INC.
 ENVIRONMENTAL CONSULTANTS
 91 Apollo Road
 Scott, LA 70583
 (337) 261-1963

