

Stewart Stover, Jr.  
12-2-22

## **Exhibit 4**

[www.amersonwhite.com](http://www.amersonwhite.com)

**SITE ASSESSMENT REPORT**  
**State of Louisiana and the Iberville Parish School Board**  
**v. BP America Production Company, et al.**  
**18<sup>th</sup> Judicial District Court, Division "A", Docket No. 72605**  
**Grand River and Sullivan Lake Oil and Gas Fields**  
**Section 16, Township 10 South, Range 11 East**  
**Plaquemine, Iberville Parish, Louisiana**  
**March 31, 2016**

Prepared for

**Ms. Amy Berret**  
**Kean Miller, LLP**  
**II City Plaza**  
**400 Convention Street, Suite 700**  
**Baton Rouge, Louisiana 70802**  
**(225) 382-3489**

and

**Mr. Eric E. Jarrell**  
**King, Krebs & Jurgens, P.L.L.C.**  
**201 St. Charles Avenue, 45<sup>th</sup> Floor**  
**New Orleans, Louisiana 70170**  
**(504) 582-3800**

and

**Mr. F. Barry Marionneaux**  
**F. Barry Marionneaux, APLC**  
**23615 Railroad Avenue**  
**Plaquemine, Louisiana 70764**  
**(225) 687-6884**

Prepared by

**HYDRO-ENVIRONMENTAL TECHNOLOGY, INC.**  
**91 Apollo Road, Scott, Louisiana 70583**  
**Post Office Box 60295, Lafayette, Louisiana 70596-0295**  
**(337) 261-1963**

## SITE ASSESSMENT REPORT

March 31, 2016

The law firms of Kean Miller, LLP, on behalf of BP America Production Company and BP Corporation North America, Inc., King, Krebs & Jurgens, P.L.L.C., on behalf of W&T Offshore, Inc.; and F. Barry Marionneaux, APLC, on behalf of Houston Oil & Gas Company, Inc., have retained Stewart L. Stover, Jr., Principal Hydrogeologist, and Brent T. Pooler, Senior Hydrogeologist/Senior Risk Analyst, of Hydro-Environmental Technology, Inc. (HET) in Lafayette, Louisiana, in the above referenced litigation. Mr. Stover has twenty-nine (29) years of experience as a Hydrogeologist and has been an expert witness in litigation involved in, but not limited to, environmental site assessment, remediation, landfill assessment and design, hazardous waste, surface water impacts, and groundwater supplies. Currently, Mr. Stover conducts project oversight for HET in the states of Louisiana, Mississippi, Texas, Wyoming, and Colorado. Mr. Pooler has over nineteen (19) years of experience in conducting hydrogeologic investigations and implementation of soil and groundwater restoration plans. Additionally, Mr. Pooler has over seventeen (17) years of experience in conducting risk assessments in the states of Louisiana and Texas and has been qualified as an expert in the fields of geology, hydrogeology, remediation, and implementation of Statewide Order 29-B, RECAP, and risk assessments. Mr. Stover's and Mr. Pooler's résumés are contained in Appendix A.

All conclusions and expert opinions in this report are based upon information and data obtained to date. Research is currently ongoing, and new information may be obtained that may change opinions between the time of preparing this expert report and trial/deposition dates.

This report is based on field data collected and information received from the client, other parties associated with the client and other third parties during the period of December 20, 2013 to March 31, 2016. All conclusions and recommendations are based on available information cited herein, and should be reviewed within this context. Should conditions at the sites in question change, or additional information become available, especially with regard to prior site conditions, it may be necessary to modify these conclusions and recommendations accordingly in the future. The contents of this report are proprietary, and text, illustrations, and/or any other parts of this report may not be reproduced without the express written permission of Hydro-Environmental Technology, Inc.

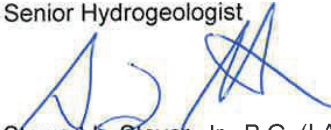
Should you have any questions or need further information, please feel free to call.

Sincerely,

HYDRO-ENVIRONMENTAL TECHNOLOGY, INC.  
Project #4651.39



Brent T. Pooler, P.G. (LA#274)  
Senior Hydrogeologist



Stewart L. Stover, Jr., P.G. (LA#440)  
Principal Hydrogeologist

BTP/SLS/eop

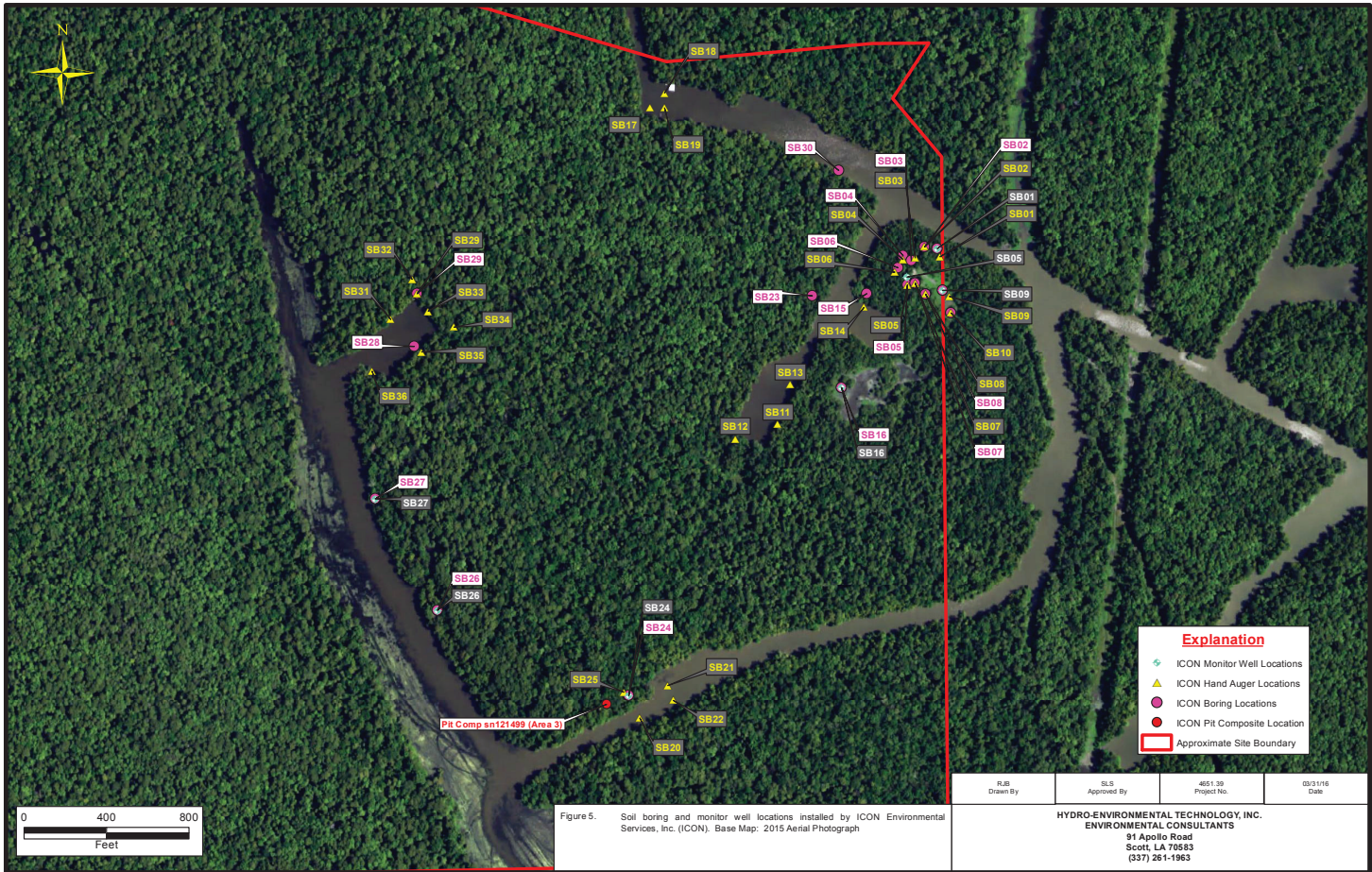


Figure 5. Soil boring and monitor well locations installed by ICON Environmental Services, Inc. (ICON). Base Map: 2015 Aerial Photograph

**APPENDIX C**

**TABLES**















Groundwater Analytical Summary - ICON Investigation

State of Louisiana and the Iberville Parish School Board vs. BP America Production Company, et al.  
Section 16, Township 15 South, Range 11 East  
Iberville Parish, Louisiana  
HET Project No. 4461.39

Table 2  
Page 1 of 1

Well Number (Screen Interval)	Date	Sampler	Salinity										BTEX										Hydrocarbons										Metals										Alkalinity		Radium																																																																																																																																																																																																																																																																																																																																																																																																																																																																																																																																																		
			Chloride 9056A 932	Bromide 9056A	Chlor Ratio	EC	TDS	Sulfate	Benzene	Toluene	Ethyl- benzene	Total Xylene	TPH-GRO (C6-C8)	TPH-GRO (C9-C10)	TPH-GRO (C11-C12)	TPH-GRO (C13-C14)	TPH-GRO (C15-C16)	TPH-GRO (C17-C18)	TPH-GRO (C19-C20)	TPH-GRO (C21-C22)	TPH-GRO (C23-C24)	TPH-GRO (C25-C26)	TPH-GRO (C27-C28)	TPH-GRO (C29-C30)	TPH-GRO (C31-C32)	TPH-GRO (C33-C34)	TPH-GRO (C35-C36)	TPH-GRO (C37-C38)	TPH-GRO (C39-C40)	TPH-GRO (C41-C42)	TPH-GRO (C43-C44)	TPH-GRO (C45-C46)	TPH-GRO (C47-C48)	TPH-GRO (C49-C50)	TPH-GRO (C51-C52)	TPH-GRO (C53-C54)	TPH-GRO (C55-C56)	TPH-GRO (C57-C58)	TPH-GRO (C59-C60)	TPH-GRO (C61-C62)	TPH-GRO (C63-C64)	TPH-GRO (C65-C66)	TPH-GRO (C67-C68)	TPH-GRO (C69-C70)	TPH-GRO (C71-C72)	TPH-GRO (C73-C74)	TPH-GRO (C75-C76)	TPH-GRO (C77-C78)	TPH-GRO (C79-C80)	TPH-GRO (C81-C82)	TPH-GRO (C83-C84)	TPH-GRO (C85-C86)	TPH-GRO (C87-C88)	TPH-GRO (C89-C90)	TPH-GRO (C91-C92)	TPH-GRO (C93-C94)	TPH-GRO (C95-C96)	TPH-GRO (C97-C98)	TPH-GRO (C99-C100)	TPH-GRO (C101-C102)	TPH-GRO (C103-C104)	TPH-GRO (C105-C106)	TPH-GRO (C107-C108)	TPH-GRO (C109-C110)	TPH-GRO (C111-C112)	TPH-GRO (C113-C114)	TPH-GRO (C115-C116)	TPH-GRO (C117-C118)	TPH-GRO (C119-C120)	TPH-GRO (C121-C122)	TPH-GRO (C123-C124)	TPH-GRO (C125-C126)	TPH-GRO (C127-C128)	TPH-GRO (C129-C130)	TPH-GRO (C131-C132)	TPH-GRO (C133-C134)	TPH-GRO (C135-C136)	TPH-GRO (C137-C138)	TPH-GRO (C139-C140)	TPH-GRO (C141-C142)	TPH-GRO (C143-C144)	TPH-GRO (C145-C146)	TPH-GRO (C147-C148)	TPH-GRO (C149-C150)	TPH-GRO (C151-C152)	TPH-GRO (C153-C154)	TPH-GRO (C155-C156)	TPH-GRO (C157-C158)	TPH-GRO (C159-C160)	TPH-GRO (C161-C162)	TPH-GRO (C163-C164)	TPH-GRO (C165-C166)	TPH-GRO (C167-C168)	TPH-GRO (C169-C170)	TPH-GRO (C171-C172)	TPH-GRO (C173-C174)	TPH-GRO (C175-C176)	TPH-GRO (C177-C178)	TPH-GRO (C179-C180)	TPH-GRO (C181-C182)	TPH-GRO (C183-C184)	TPH-GRO (C185-C186)	TPH-GRO (C187-C188)	TPH-GRO (C189-C190)	TPH-GRO (C191-C192)	TPH-GRO (C193-C194)	TPH-GRO (C195-C196)	TPH-GRO (C197-C198)	TPH-GRO (C199-C200)	TPH-GRO (C201-C202)	TPH-GRO (C203-C204)	TPH-GRO (C205-C206)	TPH-GRO (C207-C208)	TPH-GRO (C209-C210)	TPH-GRO (C211-C212)	TPH-GRO (C213-C214)	TPH-GRO (C215-C216)	TPH-GRO (C217-C218)	TPH-GRO (C219-C220)	TPH-GRO (C221-C222)	TPH-GRO (C223-C224)	TPH-GRO (C225-C226)	TPH-GRO (C227-C228)	TPH-GRO (C229-C230)	TPH-GRO (C231-C232)	TPH-GRO (C233-C234)	TPH-GRO (C235-C236)	TPH-GRO (C237-C238)	TPH-GRO (C239-C240)	TPH-GRO (C241-C242)	TPH-GRO (C243-C244)	TPH-GRO (C245-C246)	TPH-GRO (C247-C248)	TPH-GRO (C249-C250)	TPH-GRO (C251-C252)	TPH-GRO (C253-C254)	TPH-GRO (C255-C256)	TPH-GRO (C257-C258)	TPH-GRO (C259-C260)	TPH-GRO (C261-C262)	TPH-GRO (C263-C264)	TPH-GRO (C265-C266)	TPH-GRO (C267-C268)	TPH-GRO (C269-C270)	TPH-GRO (C271-C272)	TPH-GRO (C273-C274)	TPH-GRO (C275-C276)	TPH-GRO (C277-C278)	TPH-GRO (C279-C280)	TPH-GRO (C281-C282)	TPH-GRO (C283-C284)	TPH-GRO (C285-C286)	TPH-GRO (C287-C288)	TPH-GRO (C289-C290)	TPH-GRO (C291-C292)	TPH-GRO (C293-C294)	TPH-GRO (C295-C296)	TPH-GRO (C297-C298)	TPH-GRO (C299-C300)	TPH-GRO (C301-C302)	TPH-GRO (C303-C304)	TPH-GRO (C305-C306)	TPH-GRO (C307-C308)	TPH-GRO (C309-C310)	TPH-GRO (C311-C312)	TPH-GRO (C313-C314)	TPH-GRO (C315-C316)	TPH-GRO (C317-C318)	TPH-GRO (C319-C320)	TPH-GRO (C321-C322)	TPH-GRO (C323-C324)	TPH-GRO (C325-C326)	TPH-GRO (C327-C328)	TPH-GRO (C329-C330)	TPH-GRO (C331-C332)	TPH-GRO (C333-C334)	TPH-GRO (C335-C336)	TPH-GRO (C337-C338)	TPH-GRO (C339-C340)	TPH-GRO (C341-C342)	TPH-GRO (C343-C344)	TPH-GRO (C345-C346)	TPH-GRO (C347-C348)	TPH-GRO (C349-C350)	TPH-GRO (C351-C352)	TPH-GRO (C353-C354)	TPH-GRO (C355-C356)	TPH-GRO (C357-C358)	TPH-GRO (C359-C360)	TPH-GRO (C361-C362)	TPH-GRO (C363-C364)	TPH-GRO (C365-C366)	TPH-GRO (C367-C368)	TPH-GRO (C369-C370)	TPH-GRO (C371-C372)	TPH-GRO (C373-C374)	TPH-GRO (C375-C376)	TPH-GRO (C377-C378)	TPH-GRO (C379-C380)	TPH-GRO (C381-C382)	TPH-GRO (C383-C384)	TPH-GRO (C385-C386)	TPH-GRO (C387-C388)	TPH-GRO (C389-C390)	TPH-GRO (C391-C392)	TPH-GRO (C393-C394)	TPH-GRO (C395-C396)	TPH-GRO (C397-C398)	TPH-GRO (C399-C400)	TPH-GRO (C401-C402)	TPH-GRO (C403-C404)	TPH-GRO (C405-C406)	TPH-GRO (C407-C408)	TPH-GRO (C409-C410)	TPH-GRO (C411-C412)	TPH-GRO (C413-C414)	TPH-GRO (C415-C416)	TPH-GRO (C417-C418)	TPH-GRO (C419-C420)	TPH-GRO (C421-C422)	TPH-GRO (C423-C424)	TPH-GRO (C425-C426)	TPH-GRO (C427-C428)	TPH-GRO (C429-C430)	TPH-GRO (C431-C432)	TPH-GRO (C433-C434)	TPH-GRO (C435-C436)	TPH-GRO (C437-C438)	TPH-GRO (C439-C440)	TPH-GRO (C441-C442)	TPH-GRO (C443-C444)	TPH-GRO (C445-C446)	TPH-GRO (C447-C448)	TPH-GRO (C449-C450)	TPH-GRO (C451-C452)	TPH-GRO (C453-C454)	TPH-GRO (C455-C456)	TPH-GRO (C457-C458)	TPH-GRO (C459-C460)	TPH-GRO (C461-C462)	TPH-GRO (C463-C464)	TPH-GRO (C465-C466)	TPH-GRO (C467-C468)	TPH-GRO (C469-C470)	TPH-GRO (C471-C472)	TPH-GRO (C473-C474)	TPH-GRO (C475-C476)	TPH-GRO (C477-C478)	TPH-GRO (C479-C480)	TPH-GRO (C481-C482)	TPH-GRO (C483-C484)	TPH-GRO (C485-C486)	TPH-GRO (C487-C488)	TPH-GRO (C489-C490)	TPH-GRO (C491-C492)	TPH-GRO (C493-C494)	TPH-GRO (C495-C496)	TPH-GRO (C497-C498)	TPH-GRO (C499-C500)	TPH-GRO (C501-C502)	TPH-GRO (C503-C504)	TPH-GRO (C505-C506)	TPH-GRO (C507-C508)	TPH-GRO (C509-C510)	TPH-GRO (C511-C512)	TPH-GRO (C513-C514)	TPH-GRO (C515-C516)	TPH-GRO (C517-C518)	TPH-GRO (C519-C520)	TPH-GRO (C521-C522)	TPH-GRO (C523-C524)	TPH-GRO (C525-C526)	TPH-GRO (C527-C528)	TPH-GRO (C529-C530)	TPH-GRO (C531-C532)	TPH-GRO (C533-C534)	TPH-GRO (C535-C536)	TPH-GRO (C537-C538)	TPH-GRO (C539-C540)	TPH-GRO (C541-C542)	TPH-GRO (C543-C544)	TPH-GRO (C545-C546)	TPH-GRO (C547-C548)	TPH-GRO (C549-C550)	TPH-GRO (C551-C552)	TPH-GRO (C553-C554)	TPH-GRO (C555-C556)	TPH-GRO (C557-C558)	TPH-GRO (C559-C560)	TPH-GRO (C561-C562)	TPH-GRO (C563-C564)	TPH-GRO (C565-C566)	TPH-GRO (C567-C568)	TPH-GRO (C569-C570)	TPH-GRO (C571-C572)	TPH-GRO (C573-C574)	TPH-GRO (C575-C576)	TPH-GRO (C577-C578)	TPH-GRO (C579-C580)	TPH-GRO (C581-C582)	TPH-GRO (C583-C584)	TPH-GRO (C585-C586)	TPH-GRO (C587-C588)	TPH-GRO (C589-C590)	TPH-GRO (C591-C592)	TPH-GRO (C593-C594)	TPH-GRO (C595-C596)	TPH-GRO (C597-C598)	TPH-GRO (C599-C600)	TPH-GRO (C601-C602)	TPH-GRO (C603-C604)	TPH-GRO (C605-C606)	TPH-GRO (C607-C608)	TPH-GRO (C609-C610)	TPH-GRO (C611-C612)	TPH-GRO (C613-C614)	TPH-GRO (C615-C616)	TPH-GRO (C617-C618)	TPH-GRO (C619-C620)	TPH-GRO (C621-C622)	TPH-GRO (C623-C624)	TPH-GRO (C625-C626)	TPH-GRO (C627-C628)	TPH-GRO (C629-C630)	TPH-GRO (C631-C632)	TPH-GRO (C633-C634)	TPH-GRO (C635-C636)	TPH-GRO (C637-C638)	TPH-GRO (C639-C640)	TPH-GRO (C641-C642)	TPH-GRO (C643-C644)	TPH-GRO (C645-C646)	TPH-GRO (C647-C648)	TPH-GRO (C649-C650)	TPH-GRO (C651-C652)	TPH-GRO (C653-C654)	TPH-GRO (C655-C656)	TPH-GRO (C657-C658)	TPH-GRO (C659-C660)	TPH-GRO (C661-C662)	TPH-GRO (C663-C664)	TPH-GRO (C665-C666)	TPH-GRO (C667-C668)	TPH-GRO (C669-C670)	TPH-GRO (C671-C672)	TPH-GRO (C673-C674)	TPH-GRO (C675-C676)	TPH-GRO (C677-C678)	TPH-GRO (C679-C680)	TPH-GRO (C681-C682)	TPH-GRO (C683-C684)	TPH-GRO (C685-C686)	TPH-GRO (C687-C688)	TPH-GRO (C689-C690)	TPH-GRO (C691-C692)	TPH-GRO (C693-C694)	TPH-GRO (C695-C696)	TPH-GRO (C697-C698)	TPH-GRO (C699-C700)	TPH-GRO (C701-C702)	TPH-GRO (C703-C704)	TPH-GRO (C705-C706)	TPH-GRO (C707-C708)	TPH-GRO (C709-C710)	TPH-GRO (C711-C712)	TPH-GRO (C713-C714)	TPH-GRO (C715-C716)	TPH-GRO (C717-C718)	TPH-GRO (C719-C720)	TPH-GRO (C721-C722)	TPH-GRO (C723-C724)	TPH-GRO (C725-C726)	TPH-GRO (C727-C728)	TPH-GRO (C729-C730)	TPH-GRO (C731-C732)	TPH-GRO (C733-C734)	TPH-GRO (C735-C736)	TPH-GRO (C737-C738)	TPH-GRO (C739-C740)	TPH-GRO (C741-C742)	TPH-GRO (C743-C744)	TPH-GRO (C745-C746)	TPH-GRO (C747-C748)	TPH-GRO (C749-C750)	TPH-GRO (C751-C752)	TPH-GRO (C753-C754)	TPH-GRO (C755-C756)	TPH-GRO (C757-C758)	TPH-GRO (C759-C760)	TPH-GRO (C761-C762)	TPH-GRO (C763-C764)	TPH-GRO (C765-C766)	TPH-GRO (C767-C768)	TPH-GRO (C769-C770)	TPH-GRO (C771-C772)	TPH-GRO (C773-C774)	TPH-GRO (C775-C776)	TPH-GRO (C777-C778)	TPH-GRO (C779-C780)	TPH-GRO (C781-C782)	TPH-GRO (C783-C784)	TPH-GRO (C785-C786)	TPH-GRO (C787-C788)	TPH-GRO (C789-C790)	TPH-GRO (C791-C792)	TPH-GRO (C793-C794)	TPH-GRO (C795-C796)	TPH-GRO (C797-C798)	TPH-GRO (C799-C800)	TPH-GRO (C801-C802)	TPH-GRO (C803-C804)	TPH-GRO (C805-C806)	TPH-GRO (C807-C808)	TPH-GRO (C809-C810)	TPH-GRO (C811-C812)	TPH-GRO (C813-C814)	TPH-GRO (C815-C816)	TPH-GRO (C817-C818)	TPH-GRO (C819-C820)	TPH-GRO (C821-C822)	TPH-GRO (C823-C824)	TPH-GRO (C825-C826)	TPH-GRO (C827-C828)	TPH-GRO (C829-C830)	TPH-GRO (C831-C832)	TPH-GRO (C833-C834)	TPH-GRO (C835-C836)	TPH-GRO (C837-C838)	TPH-GRO (C839-C840)	TPH-GRO (C841-C842)	TPH-GRO (C843-C844)	TPH-GRO (C845-C846)	TPH-GRO (C847-C848)	TPH-GRO (C849-C850)	TPH-GRO (C851-C852)	TPH-GRO (C853-C854)	TPH-GRO (C855-C856)	TPH-GRO (C857-C858)	TPH-GRO (C859-C860)	TPH-GRO (C861-C862)	TPH-GRO (C863-C864)	TPH-GRO (C865-C866)	TPH-GRO (C867-C868)	TPH-GRO (C869-C870)	TPH-GRO (C871-C872)	TPH-GRO (C873-C874)	TPH-GRO (C875-C876)	TPH-GRO (C877-C878)	TPH-GRO (C879-C880)	TPH-GRO (C881-C882)	TPH-GRO (C883-C884)	TPH-GRO (C885-C886)	TPH-GRO (C887-C888)	TPH-GRO (C889-C890)	TPH-GRO (C891-C892)	TPH-GRO (C893-C894)	TPH-GRO (C895-C896)	TPH-GRO (C897-C898)	TPH-GRO (C899-C900)	TPH-GRO (C901-C902)	TPH-GRO (C903-C904)	TPH-GRO (C905-C906)	TPH-GRO (C907-C908)	TPH-GRO (C909-C910)	TPH-GRO (C911-C912)	TPH-GRO (C913-C914)	TPH-GRO (C915-C916)	TPH-GRO (C917-C918)	TPH-GRO (C919-C920)	TPH-GRO (C921-C922)	TPH-GRO (C923-C924)	TPH-GRO (C925-C926)	TPH-GRO (C927-C928)	TPH-GRO (C929-C930)	TPH-GRO (C931-C932)	TPH-GRO (C933-C934)	TPH-GRO (C935-C936)	TPH-GRO (C937-C938)	TPH-GRO (C939-C940)	TPH-GRO (C941-C942)	TPH-GRO (C943-C944)	TPH-GRO (C945-C946)	TPH-GRO (C947-C948)	TPH-GRO (C949-C950)	TPH-GRO (C951-C952)	TPH-GRO (C953-C954)	TPH-GRO (C955-C956)	TPH-GRO (C957-C958)	TPH-GRO (C959-C960)	TPH-GRO (C961-C962)	TPH-GRO (C963-C964)	TPH-GRO (C965-C966)	TPH-GRO (C967-C968)	TPH-GRO (C969-C970)	TPH-GRO (C971-C972)	TPH-GRO (C973-C974)	TPH-GRO (C975-C976)	TPH-GRO (C977-C978)	TPH-GRO (C979-C980)	TPH-GRO (C981-C982)	TPH-GRO (C983-C984)	TPH-GRO (C985-C986)	TPH-GRO (C987-C988)	TPH-GRO (C989-C990)	TPH-GRO (C991-C992)	TPH-GRO (C993-C994)	TPH-GRO (C995-C996)	TPH-GRO (C997-C998)	TPH-GRO (C999-C1000)	TPH-GRO (C1001-C1002)	TPH-GRO (C1003-C1004)	TPH-GRO (C1005-C1006)	TPH-GRO (C1007-C1008)	TPH-GRO (C1009-C1010)	TPH-GRO (C1011-C1012)	TPH-GRO (C1013-C1014)	TPH-GRO (C1015-C1016)	TPH-GRO (C1017-C1018)	TPH-GRO (C1019-C1020)	TPH-GRO (C1021-C1022)	TPH-GRO (C1023-C1024)	TPH-GRO (C1025-C1026)	TPH-GRO (C1027-C1028)	TPH-GRO (C1029-C1030)	TPH-GRO (C1031-C1032)	TPH-GRO (C1033-C1034)	TPH-GRO (C1035-C1036)	TPH-GRO (C1037-C1038)	TPH-GRO (C1039-C1040)	TPH-GRO (C1041-C1042)	TPH-GRO (C1043-C1044)	TPH-GRO (C1045-C1046)	TPH-GRO (C1047-C1048)	TPH-GRO (C1049-C1050)	TPH-GRO (C1051-C1052)	TPH-GRO (C1053-C1054)	TPH-GRO (C1055-C1056)	TPH-GRO (C1057-C1058)	TPH-GRO (C1059-C1060)	TPH-GRO (C1061-C1062)	TPH-GRO (C1063-C1064)	TPH-GRO (C1065-C1066)	TPH-GRO (C1067-C1068)	TPH-GRO (C1069-C1070)	TPH-GRO (C1071-C1072)	TPH-GRO (C1073-C1074)	TPH-GRO (C1075-C1076)	TPH-GRO (C1077-C1078)	TPH-GRO (C1079-C1080)	TPH-GRO (C1081-C1082)	TPH-GRO (C1083-C1084)	TPH-GRO (C1085-C1086)	TPH-GRO (C1087-C1088)	TPH-GRO (C1089-C1090)	TPH-GRO (C1091-C1092)	TPH-GRO (C1093-C1094)	TPH-GRO (C1095-C1096)	TPH-GRO (C1097-C1098)	TPH-GRO (C1099-C1100)	TPH-GRO (C1101-C1102)	TPH-GRO (C1103-C1104)	TPH-GRO (C1105-C1106)	TPH-GRO (C1107-C1108)	TPH-GRO (C1109-C1110)	TPH-GRO (C1111-C1112)	TPH-GRO (C1113-C1114)	TPH-GRO (C1115-C1116)	TPH-GRO (C1117-C1118)	TPH-GRO (C1119-C1120)	TPH-GRO (C1121-C1122)	TPH-GRO (C1123-C1124)	TPH-GRO (C1125-C1126)	TPH-GRO (C1127-C1128)	TPH-GRO (C1129-C1130)	TPH-GRO (C1131-C1132)

**Geotechnical Analytical Summary Table**

**State of Louisiana and the Iberville Parish School Board vs. BP America Production Company, et al.**  
**Section 16, Township 10 South, Range 11 East**  
**Iberville Parish, Louisiana**  
**HET Project No. 4651.39**

**Table 3**  
**Page 1 of 1**

Sample I.D.	Sample Depth (ft)	Description	Atterberg Limits			Water Content (%)	Dry Density (pcf)	Organic Matter (%)	Coefficient of Permeability (cm/sec)
			LL	PL	PI				
<b>DB1</b>	26 - 28	Gray clay (CH) with trace of organics	84	23	61	49.4	74.1	10.6	4.0 x 10 <sup>-8</sup>
<b>DB1</b>	46 - 48	Gray clay (CH) with trace of organics	104	31	73	46.4	55.8	11.3	5.4 x 10 <sup>-8</sup>
<b>DB1</b>	56 - 58	Gray clay (CH) with trace of organics	84	32	52	41.0	75.5	10.2	1.4 x 10 <sup>-7</sup>

LL - Liquid Limit  
 PL - Plastic Limit  
 PI - Plasticity Index  
 pcf - Pound per Cubic Foot

**Monitor Well Construction and Sampling Data**

**State of Louisiana and the Iberville Parish School Board vs. BP America Production Company, et al.**

**Section 16, Township 10 South, Range 11 East**

**Iberville Parish, Louisiana**

**HET Project No. 4651.39**

**Table 4  
Page 1 of 1**

<b>Monitoring Well I. D. Number</b>	MW-1	MW-2	MW-3	MW-4	MW-5	MW-6
<b>Well Type</b>	Monitor	Monitor	Monitor	Monitor	Monitor	Monitor
<b>Casing Material</b>	PVC	PVC	PVC	PVC	PVC	PVC
<b>Casing Diameter (Inches)</b>	1	1	1	1	1	1
<b>Development Method</b>	Geo Pump	Geo Pump	Geo Pump	Geo Pump	Geo Pump	Geo Pump
<b>Elevation of Natural Ground (Feet)</b>	6.72	5.35	5.04	2.25	2.09	2.12
<b>Top of Casing Elevation (feet)</b>	9.93	8.64	8.02	4.90	5.13	5.32
<b>Stickup (feet)</b>	3.21	3.29	2.98	2.65	3.04	3.20
<b>Depth to Water (October 13, 2015)</b>	9.01	7.98	7.45	5.14	5.41	5.34
<b>Water Elevation (NGVD) (October 13, 2015)</b>	0.92	0.66	0.57	-0.24	-0.28	-0.02
<b>Latitude</b>	30.19891273	30.19850537	30.19841434	30.19835578	30.19784176	30.19750482
<b>Longitude</b>	-91.34288445	-91.34330173	-91.34322762	-91.34269324	-91.34268760	-91.34306390
<b>Lat / Long Method</b>	Survey	Survey	Survey	Survey	Survey	Survey
<b>Date Completed</b>	9/30/15	9/30/15	9/30/15	10/1/15	10/1/15	10/1/15
<b>Well Depth (feet below TOC)</b>	27.20	23.41	24.00	18.58	17.83	20.17
<b>Well Depth (Feet below land surface)</b>	23.99	20.12	21.02	15.93	14.79	16.97
<b>Sampling Data:</b>						
<b>Sample Date</b>	10/8/15	10/8/15	10/7/15	10/6/15	10/6/15	10/6/15
<b>Gallons Purged / Dry</b>	0.75 / 3X	3.0 / 2X	0.75 / 7X	0.5 / 7X	5.0 / 1X	5.5 / 0X
<b>Sampling Frequency</b>	Once	Once	Once	Once	Once	Once
<b>Free Product Elevations</b>	N/A	N/A	N/A	N/A	N/A	N/A
<b>Comments</b>	N/A	N/A	N/A	N/A	N/A	N/A
<b>Field Parameter Data:</b>						
<b>pH (Initial) - Standard Units</b>	6.40	5.68	5.37	5.61	5.78	6.00
<b>pH (Final) - Standard Units</b>	6.40	6.10	5.61	5.85	5.79	5.74
<b>Turbidity (Initial) - NTU</b>	65.5	NA	206	N/A	9.17	NA
<b>Turbidity (Final) - NTU</b>	N/A	393	N/A	35.2	0.73	NA
<b>ORP (Initial)</b>	129.2	108.6	7.9	32.1	22.2	13.60
<b>ORP (Final)</b>	89.0	37.2	-32.8	22.8	-44.5	-54.30
<b>Temperature (Initial) - °C</b>	24.3	23.0	23.4	23.6	22.8	21.70
<b>Temperature (Final) - °C</b>	25.9	23.0	24.3	24.7	22.1	21.00
<b>Specific Conductance (Initial) - ms/cm</b>	7.61	68.5	70.9	12.58	29.55	30.16
<b>Specific Conductance (Final) - ms/cm</b>	7.57	69.2	71.4	13.59	29.22	30.39











