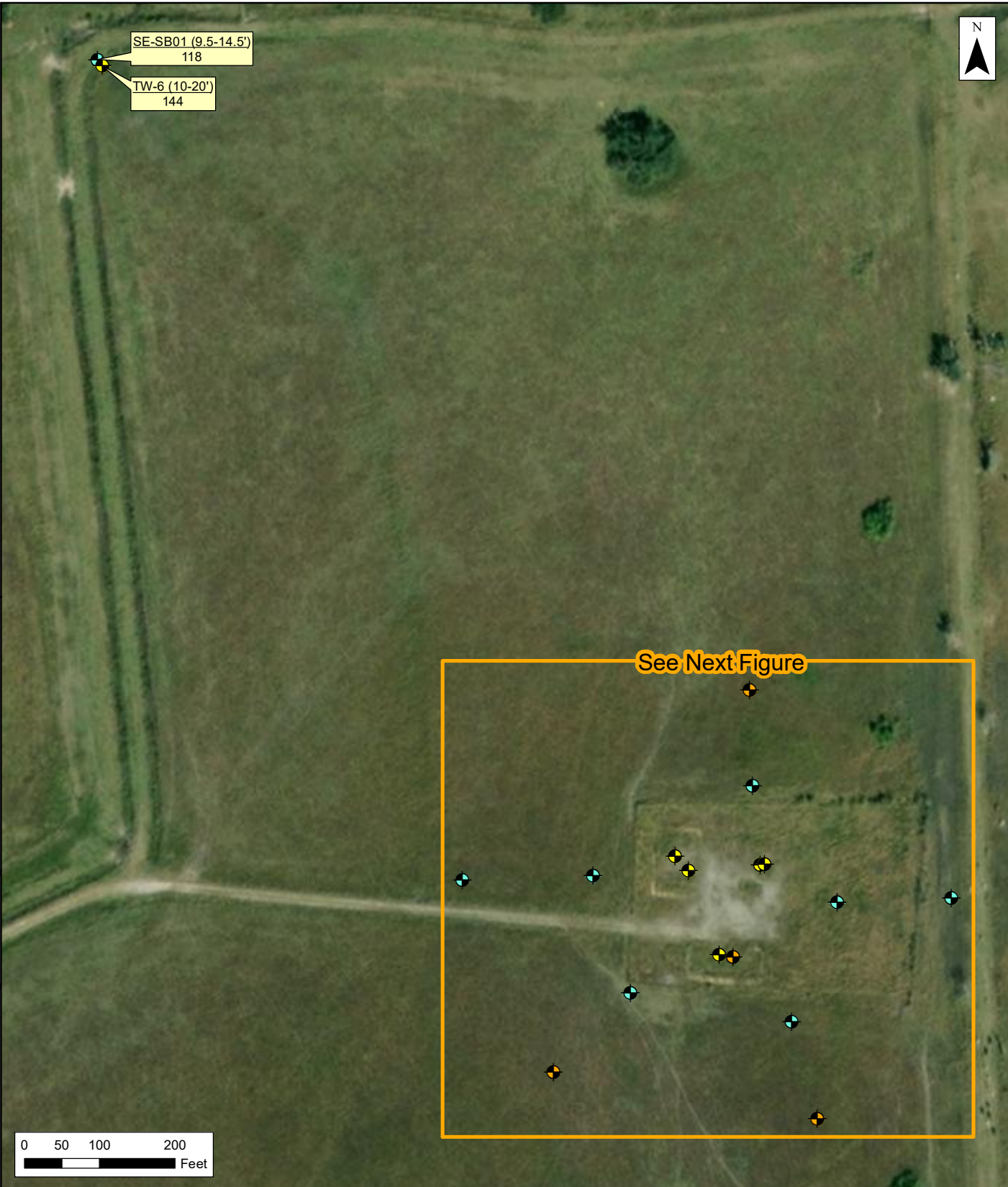


Q:\Houston\Projects\0494259 Choupique Remediation Plan.DA\GIS\Maps\09_Lim Ad Ammend\41A_Chloride in Groundwater.mxd, REVISED: 01/07/2022, SCALE: 1:2,200 when printed at 8.5x11

DRAWN BY: ECM



- Acadian Groundwater Sample Location
- Southland Groundwater Sample Location
- ERM Groundwater Sample Location

Notes:
 Chloride concentrations reported as mg/L.
 Split samples reported as ERM split/Southland split where available.
 Bold values exceed the EPA SMCL of 250 mg/L.
 Imagery basemap via ArcGIS Online.

Figure 41A
Chloride in Groundwater

H. C. Drew Estate vs Neumin Production Company
 North Choupique Field
 Calcasieu Parish, Louisiana