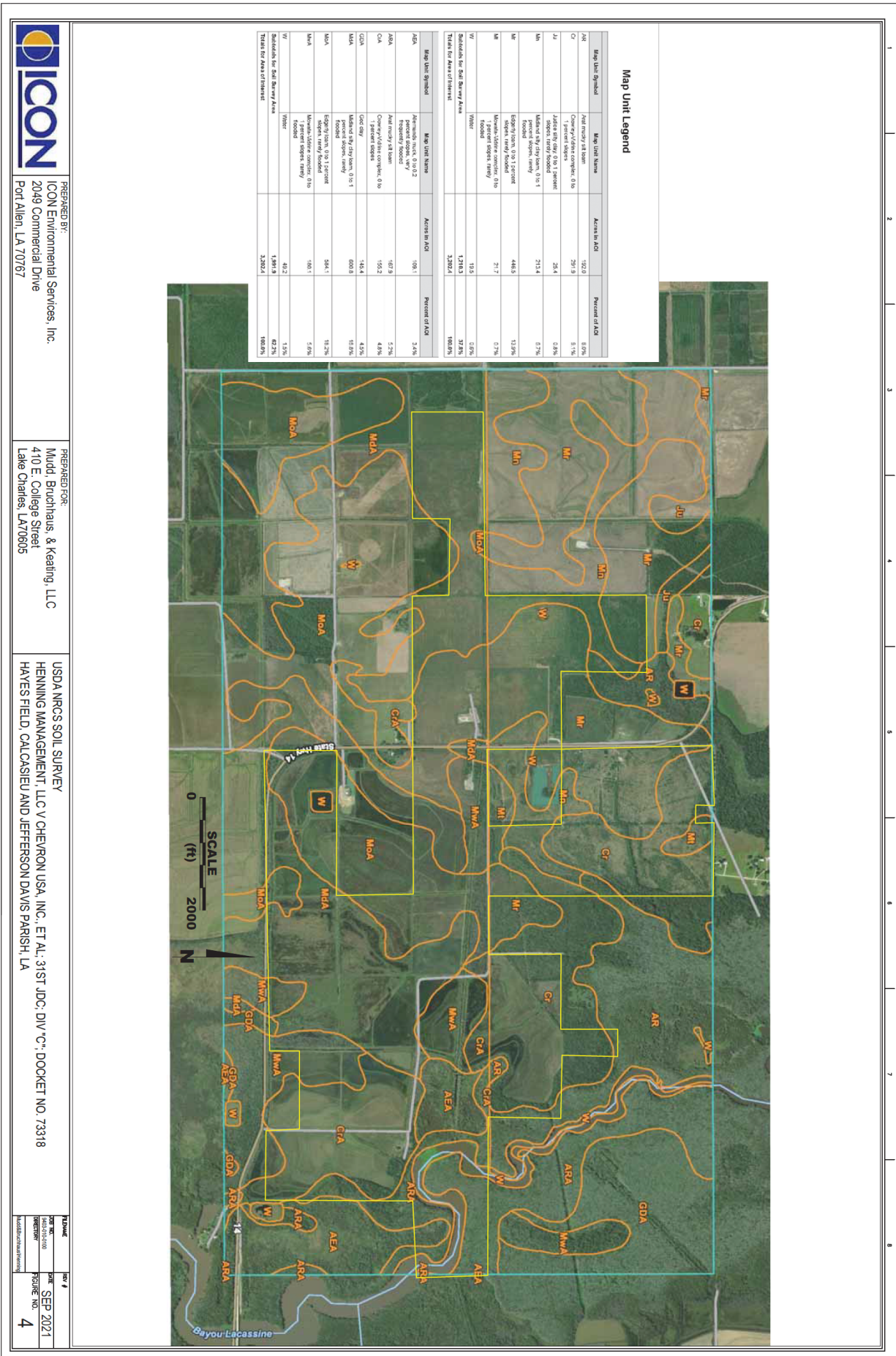


Figures

10 - 12

Figure 11 – ICON Figure 4



PREPARED BY:
 ICON Environmental Services, Inc.
 2049 Commercial Drive
 Port Allen, LA 70767

PREPARED FOR:
 Mudd, Bruchhaus, & Keating, LLC
 410 E. College Street
 Lake Charles, LA 70605

USDA NRCS SOIL SURVEY
 HENNING MANAGEMENT, LLC v CHEVRON USA, INC., ET AL; 3:1ST JDC; DIV "C"; DOCKET NO. 73318
 HAYES FIELD, CALCASIEU AND JEFFERSON DAVIS PARISH, LA

DATE: SEP 2021
 FIGURE NO.: 4

Figure 12 – ICON Figure 36

