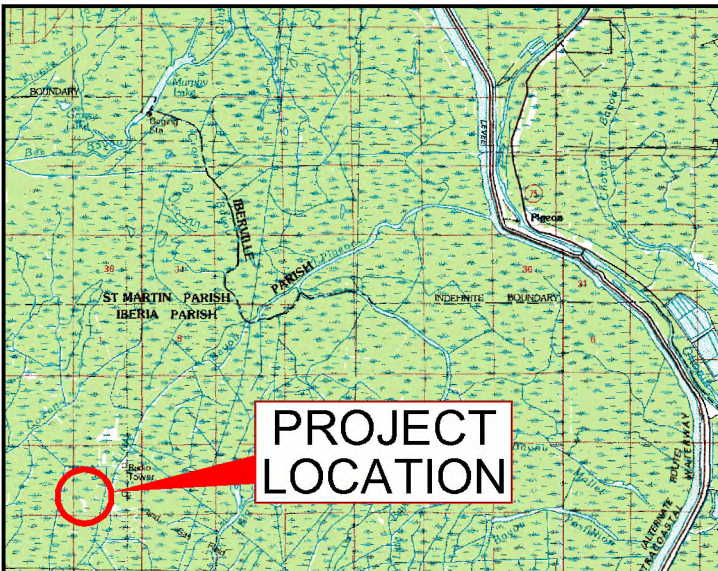


3/18/2021 - P:\Y-2021\2021.0070DWG\POST WELL INSTALLATION WITH ADDITIONAL ELEVATIONS\2021.0070T2.DWG



PROJECT LOCATION

SAINT MARTIN PARISH

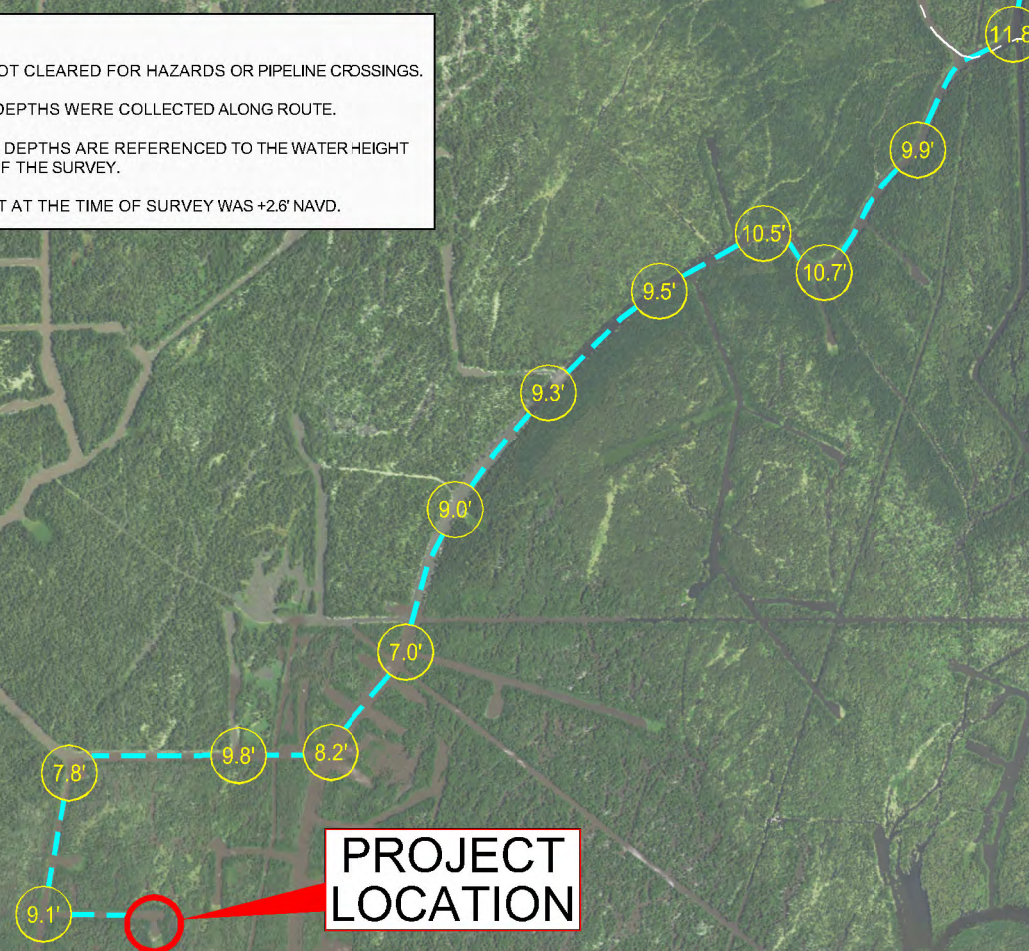
IBERVILLE PARISH

IBERIA PARISH

- NOTES:**
- ROUTE WAS NOT CLEARED FOR HAZARDS OR PIPELINE CROSSINGS.
 - ONLY WATER DEPTHS WERE COLLECTED ALONG ROUTE.
 - THESE WATER DEPTHS ARE REFERENCED TO THE WATER HEIGHT AT THE TIME OF THE SURVEY.
 - WATER HEIGHT AT THE TIME OF SURVEY WAS +2.6' NAVD.

LEGEND

(10.5') WATER DEPTH AT TIME OF SURVEY



PROJECT LOCATION

- SURVEY NOTES:**
- THE ACCESS ROUTE SURVEY WAS PERFORMED BY CONVENTIONAL SURVEY CREW WITH TRIMBLE RTK & WAASGPS ON 2/1/21 BY T. BAKER SMITH, LLC.
 - TBS FIELD BOOK 4909 PAGE 67-70.
 - HORIZONTAL POSITIONS SHOWN HEREON ARE BASED ON THE LOUISIANA SOUTH STATE PLANE COORDINATE SYSTEM OF 1983.
 - DUE TO THE REMOTENESS OF THE SITE AND THE LIMITED AVAILABILITY OF C4G REFERENCE NETWORK COVERAGE, HORIZONTAL COORDINATES ARE DERIVED FROM A WAAS ENABLED GPS RECEIVER.
 - ALL ELEVATIONS ARE REFERENCED TO HEIGHT OF WATER AT THE TIME OF SURVEY.
 - WATER ELEVATIONS WERE ESTABLISHED THROUGH LIMITED C4G OBSERVATIONS.
 - ALL UNITS OF MEASUREMENT SHOWN HEREON ARE IN U.S. SURVEY FEET.
 - THE NEAREST CONTROLLING C4G REFERENCE STATION IS BSRL, BAYOU SORREL, LA.
 - USGS DOQQ IMAGERY USED FOR BACKGROUND PHOTOGRAPHY.

DISCLAIMER:

WHILE REASONABLE EFFORTS ARE MADE TO LOCATE ALL PIPELINES, METAL OBJECTS OR OTHER SUBSURFACE OBSTRUCTIONS IN THE SURVEYED AREA, THE EQUIPMENT USED AND THE CHARACTERISTICS OF PIPELINES THEMSELVES MAKE IT IMPOSSIBLE TO GUARANTEE TOTAL SUCCESS. ACCORDINGLY, IT IS INCUMBENT UPON THE OWNERS, OPERATORS AND/OR CONTRACTORS CONDUCTING OPERATIONS INCLUDING DREDGING AND EXCAVATION TO CONDUCT THEIR OPERATIONS WITH EXTREME CAUTION AND RECOGNIZE THAT HAZARDS IN ADDITION TO THOSE DETECTED AND MARKED BY TBS MAY EXIST.

I CERTIFY THAT THE SURVEY DEPICTED ON THIS PLAN WAS PERFORMED UNDER MY SUPERVISION IN ACCORDANCE WITH GENERALLY ACCEPTED SURVEY PRACTICES. THIS SURVEY DOES NOT MEET THE STANDARDS OF PRACTICE FOR BOUNDARY SURVEYS AS SET FORTH BY THE LOUISIANA PROFESSIONAL ENGINEERS AND LAND SURVEYORS BOARD.

3/17/21

APPROVED: *Shane J. Kirkland*

SHANE J. KIRKLAND
License No. 5442
PROFESSIONAL
LAND SURVEYOR REG. NO. 0372
P.O. BOX 206 HOUMA, LA 70309 (855) 868-0050

NOTES:

T. BAKER SMITH
A CENTURY OF SOLUTIONS
412 South Van Ave, Houma, LA 70363
(985)868-1050 - tbsmith.com

SCALE: 1" = 3000'

REV. NO: 00 REV. DATE: --/-- REV. BY: --

REVISION DESCRIPTION:

DRAWN BY:	JMH	APPROVED BY:	JMH
DATE:	3/17/21	JOB NO:	2021.0070
DRAWING NAME:	2021.0070T2.DWG		
PROJECTION:	LOUISIANA SOUTH GRID		
GEO. DATUM:	NAD83 VERT. DATUM: NAVD88		
GRID UNITS:	US SURVEY FEET		
SHEET NO:	1	OF	5

ACCESS ROUTE

Environmental Resources Management

Jeanerette Lumber and Shingle Company
Bayou Pigeon Oil & Gas Field
Iberville and Iberia Parishes
Louisiana

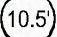

IBERIA FARISH

DISCLAIMER:

WHILE REASONABLE EFFORTS ARE MADE TO LOCATE ALL PIPELINES, METAL OBJECTS OR OTHER SUBSURFACE OBSTRUCTIONS IN THE SURVEYED AREA, THE EQUIPMENT USED AND THE CHARACTERISTICS OF PIPELINES THEMSELVES MAKE IT IMPOSSIBLE TO GUARANTEE TOTAL SUCCESS. ACCORDINGLY, IT IS INCUMBENT UPON THE OWNERS, OPERATORS AND/OR CONTRACTORS CONDUCTING OPERATIONS INCLUDING DREDGING AND EXCAVATION TO CONDUCT THEIR OPERATIONS WITH EXTREME CAUTION AND RECOGNIZE THAT HAZARDS IN ADDITION TO THOSE DETECTED AND MARKED BY TBS MAY EXIST.

POINT #	LOUISIANA SOUTH ZONE GRID		GEOGRAPHIC COORDINATES		TOP OF WELL CASING ELEV.	BOTTOM ELEV.	WATER DEPTH	DESCRIPTION
	X=(NAD83)	X=(NAD83)	LATITUDE	LONGITUDE				
MW-1	3,257,462.99	552,042.23	30°01'04.76"	91°24'25.84"	7.5'	0.3'	2.6'	ASBUILT MONITORING WELL
MW-2	3,257,597.75	551,680.42	30°01'01.18"	91°24'24.31"	8.4'	0.3'	2.6'	ASBUILT MONITORING WELL
MW-3	3,257,831.48	552,032.21	30°01'04.67"	91°24'21.65"	7.2'	-0.1'	3.0'	ASBUILT MONITORING WELL
JLS-11	3,257,756.39	551,855.24	30°01'02.92"	91°24'22.51"	NA	5.3'	NA	ASBUILT BORE HOLE
JLS-12	3,257,912.93	551,384.56	30°00'58.26"	91°24'20.72"	NA	3.7'	NA	ASBUILT BORE HOLE

LEGEND

-  WATER DEPTH AT TIME OF 2-1-21 SURVEY
-  AS-BUILT MONITORING WELLS

WATER HEIGHT ON 02/01/2021: +2.6' NAVD



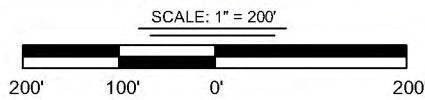
SURVEY NOTES:

1. THE FIELD SURVEY WAS PERFORMED BY CONVENTIONAL SURVEY CREW WITH TRIMBLE RTK/WAAS GPS ON 2/1/21, 2/9/21, & 3/4/21 BY T. BAKER SMITH, LLC.
2. TBS FIELD BOOK 4909 PAGE 67-70 & 76-78, BOOK 4903 PAGE 14-19.
3. HORIZONTAL POSITIONS SHOWN HEREON ARE BASED ON THE LOUISIANA SOUTH STATE PLANE COORDINATE SYSTEM OF 1983.
4. DATA COLLECTED ON 2/1/21, DUE TO THE REMOTENESS OF THE SITE AND THE LIMITED AVAILABILITY OF C4G REFERENCE NETWORK COVERAGE, HORIZONTAL COORDINATES ARE DERIVED FROM A WAAS ENABLE GPS RECEIVER.
5. ALL ELEVATIONS ARE REFERENCED TO HEIGHT OF WATER AT THE TIME OF SURVEY.
6. WATER ELEVATIONS WERE ESTABLISHED THROUGH LIMITED C4G OBSERVATIONS.
7. ALL UNITS OF MEASUREMENT SHOWN HEREON ARE IN U.S. SURVEY FEET.
8. DATA COLLECTED ON 2/9/21 & 3/4/21 HORIZONTAL AND VERTICAL CONTROL WERE ESTABLISHED THROUGH STATIC GPS OBSERVATIONS ON MONUMENT 1002. POSITIONS WERE CORRECTED THROUGH THE NATIONAL GEODETIC SURVEYS ONLINE POSITIONING USER SERVICE.
9. THE NEAREST CONTROLLING C4G REFERENCE STATION IS BRL, BAYOU SORREL, LA.
10. USGS DOQQ IMAGERY USED FOR BACKGROUND PHOTOGRAPHY.

I CERTIFY THAT THE SURVEY DEPICTED ON THIS PLAN WAS PERFORMED UNDER MY SUPERVISION IN ACCORDANCE WITH GENERALLY ACCEPTED SURVEY PRACTICES. THIS SURVEY DOES NOT MEET THE STANDARDS OF PRACTICE FOR BOUNDARY SURVEYS AS SET FORTH BY THE LOUISIANA PROFESSIONAL ENGINEERS AND LAND SURVEYORS BOARD.

APPROVED:  3/17/21
 SHANE J. KIRKLAND
 License No. 5142
 PROFESSIONAL
 SHANE J. KIRKLAND, P.L.S.
 LAND SURVEYOR REG. NO. 974
 P.O. BOX 10000 HOUMA, LA 70363-0000-1050

NOTES:



REV. NO:	1	REV. DATE:	3/22/21	REV. BY:	JMH
REVISION DESCRIPTION: REVISED NAME OF BORE HOLE LOCATION					

DRAWN BY:	JMH	APPROVED BY:	JMH
DATE:	3/17/21	JOB NO:	2021.0070
DRAWING NAME: 2021.0070AB2.DWG			
PROJECTION: LOUISIANA SOUTH GRID GEO. DATUM: NAD83 VERT. DATUM: NAVD88 GRID UNITS: US SURVEY FEET			
SHEET NO:	2	OF	5

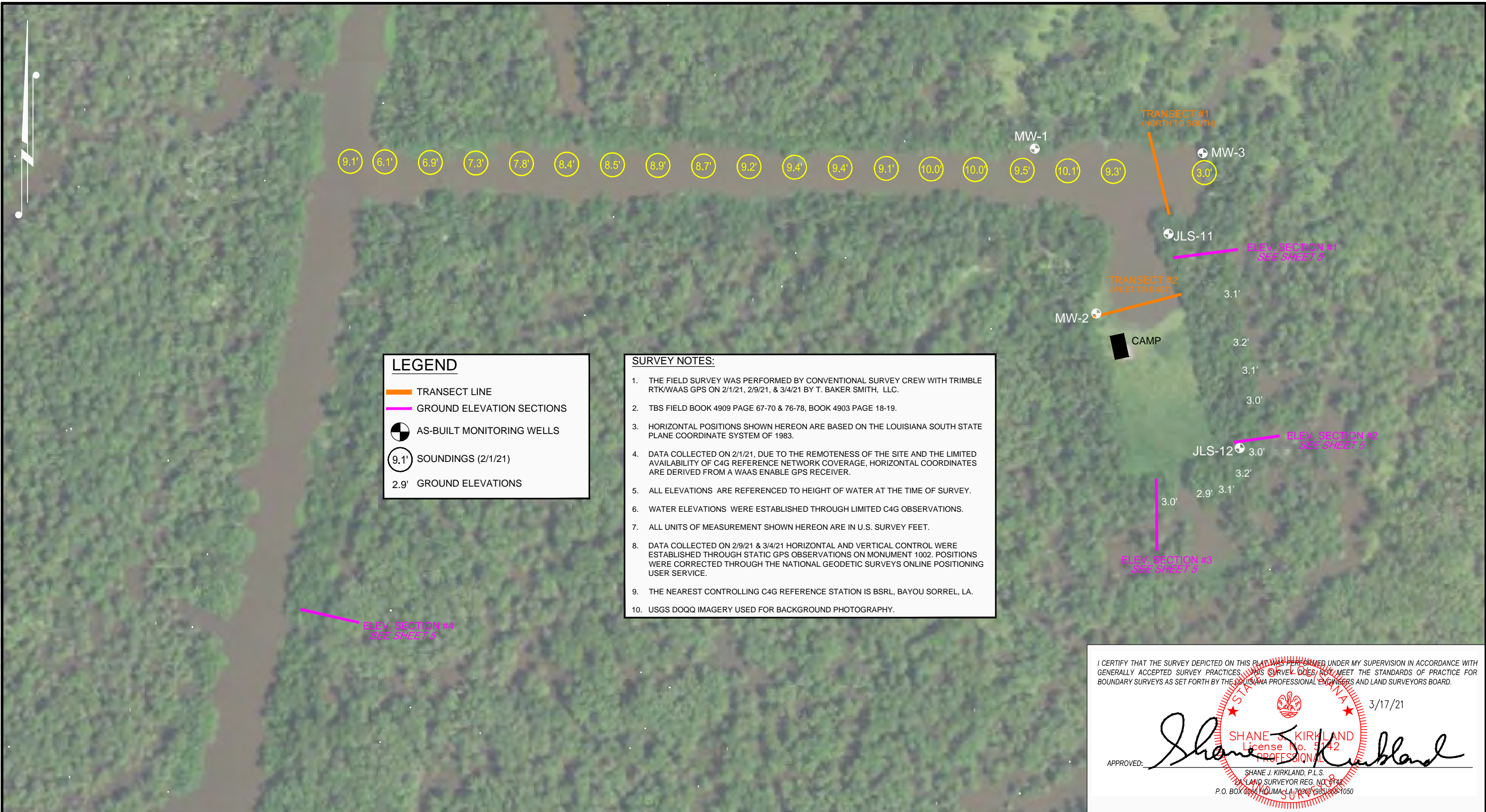
AS-BUILT MONITORING WELL LOCATIONS

Environmental Resources Management

Jeanerette Lumber and Shingle Company
 Bayou Pigeon Oil & Gas Field
 Iberville and Iberia Parishes
 Louisiana

3/22/2021 - P:\Y-2021\2021.0070DWG\POST WELL INSTALLATION WITH ADDITIONAL ELEVATIONS\2021.0070AB2.DWG

3/22/2021 - P:\Y-2021\2021-0070\DWG\POST WELL INSTALLATION WITH ADDITIONAL ELEVATIONS\2021.0070AB3.DWG



LEGEND

- TRANSECT LINE
- GROUND ELEVATION SECTIONS
- AS-BUILT MONITORING WELLS
- SOUNDINGS (2/1/21)
- 2.9' GROUND ELEVATIONS

- SURVEY NOTES:**
1. THE FIELD SURVEY WAS PERFORMED BY CONVENTIONAL SURVEY CREW WITH TRIMBLE RTK/WAAS GPS ON 2/1/21, 2/9/21, & 3/4/21 BY T. BAKER SMITH, LLC.
 2. TBS FIELD BOOK 4909 PAGE 67-70 & 76-78, BOOK 4903 PAGE 18-19.
 3. HORIZONTAL POSITIONS SHOWN HEREON ARE BASED ON THE LOUISIANA SOUTH STATE PLANE COORDINATE SYSTEM OF 1983.
 4. DATA COLLECTED ON 2/1/21, DUE TO THE REMOTENESS OF THE SITE AND THE LIMITED AVAILABILITY OF C4G REFERENCE NETWORK COVERAGE, HORIZONTAL COORDINATES ARE DERIVED FROM A WAAS ENABLE GPS RECEIVER.
 5. ALL ELEVATIONS ARE REFERENCED TO HEIGHT OF WATER AT THE TIME OF SURVEY.
 6. WATER ELEVATIONS WERE ESTABLISHED THROUGH LIMITED C4G OBSERVATIONS.
 7. ALL UNITS OF MEASUREMENT SHOWN HEREON ARE IN U.S. SURVEY FEET.
 8. DATA COLLECTED ON 2/9/21 & 3/4/21 HORIZONTAL AND VERTICAL CONTROL WERE ESTABLISHED THROUGH STATIC GPS OBSERVATIONS ON MONUMENT 1002. POSITIONS WERE CORRECTED THROUGH THE NATIONAL GEODETIC SURVEYS ONLINE POSITIONING USER SERVICE.
 9. THE NEAREST CONTROLLING C4G REFERENCE STATION IS BSRL, BAYOU SORREL, LA.
 10. USGS DOQQ IMAGERY USED FOR BACKGROUND PHOTOGRAPHY.

I CERTIFY THAT THE SURVEY DEPICTED ON THIS PLAN WAS PERFORMED UNDER MY SUPERVISION IN ACCORDANCE WITH GENERALLY ACCEPTED SURVEY PRACTICES. THIS SURVEY DOES NOT MEET THE STANDARDS OF PRACTICE FOR BOUNDARY SURVEYS AS SET FORTH BY THE LOUISIANA PROFESSIONAL ENGINEERS AND LAND SURVEYORS BOARD.

3/17/21

SHANE J. KIRKLAND
 License No. 5142
 PROFESSIONAL ENGINEER

APPROVED:

SHANE J. KIRKLAND, P.L.S.
 LAND SURVEYOR REG. NO. 9748
 P.O. BOX 2076 HOUMA, LA 70368 (985) 868-1050

NOTES:

T. BAKER SMITH
 A CENTURY OF SOLUTIONS
 412 South Van Ave, Houma, LA 70363
 (985)868-1050 - tbsmith.com

SCALE: 1" = 200'

REV. NO: 1	REV. DATE: 3-22-21	REV. BY: JMH
REVISION DESCRIPTION: REVISED NAME OF BORE HOLE LOCATION		

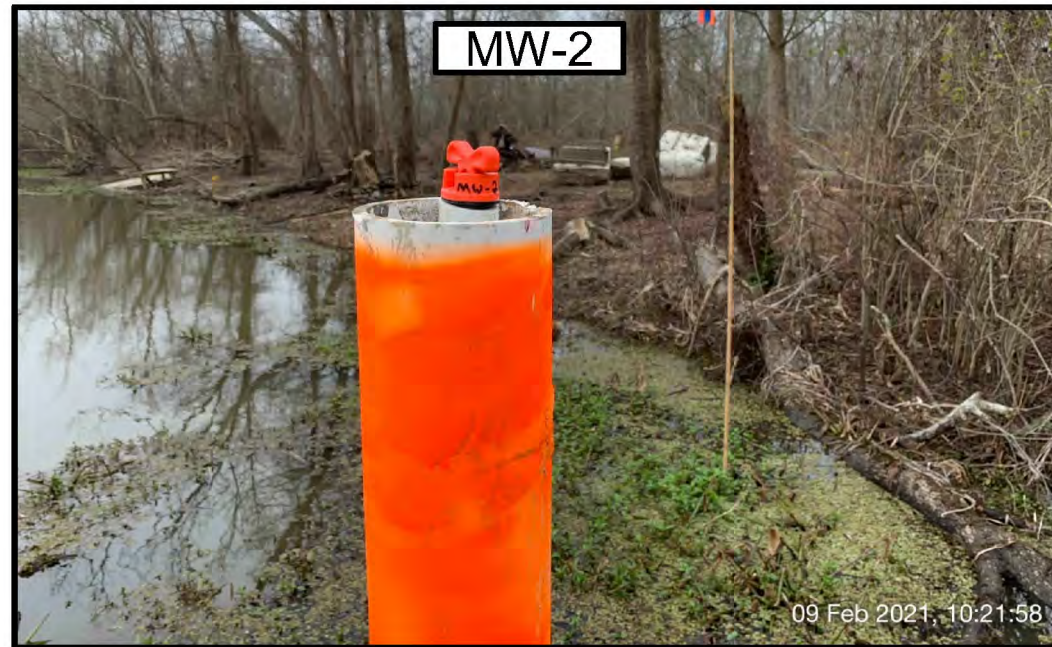
DRAWN BY: JMH	APPROVED BY: JMH
DATE: 3/17/21	JOB NO: 2021.0070
DRAWING NAME: 2021.0070AB3.DWG	
PROJECTION: LOUISIANA SOUTH GRID GEO. DATUM: NAD83 VERT. DATUM: NAVD88 GRID UNITS: US SURVEY FEET	
SHEET NO: 3	OF 5

PLAN VIEW

Environmental Resources Management

Jeanerette Lumber and Shingle Company
 Bayou Pigeon Oil & Gas Field
 Iberville and Iberia Parishes
 Louisiana

3/18/2021 - P:\Y-2021\2021.0070\DWG\POST WELL INSTALLATION WITH ADDITIONAL ELEVATIONS\2021.0070AB4.DWG



I CERTIFY THAT THE SURVEY DEPICTED ON THIS PLAN WAS PERFORMED UNDER MY SUPERVISION IN ACCORDANCE WITH GENERALLY ACCEPTED SURVEY PRACTICES. THIS SURVEY DOES NOT MEET THE STANDARDS OF PRACTICE FOR BOUNDARY SURVEYS AS SET FORTH BY THE LOUISIANA PROFESSIONAL ENGINEERS AND LAND SURVEYORS BOARD.

3/17/21

APPROVED: *Shane J. Kirkland*

SHANE J. KIRKLAND
License No. 5142
PROFESSIONAL

SHANE J. KIRKLAND, P.L.S.
LAND SURVEYOR REG. NO. 5142
P.O. BOX 2200 HOUMA, LA 70363 (985) 868-1050

NOTES:

T. BAKER SMITH
A CENTURY OF SOLUTIONS
412 South Van Ave, Houma, LA 70363
(985)868-1050 - tbsmith.com

REV. NO:	00	REV. DATE:	--/--	REV. BY:	---
REVISION DESCRIPTION:					
-					

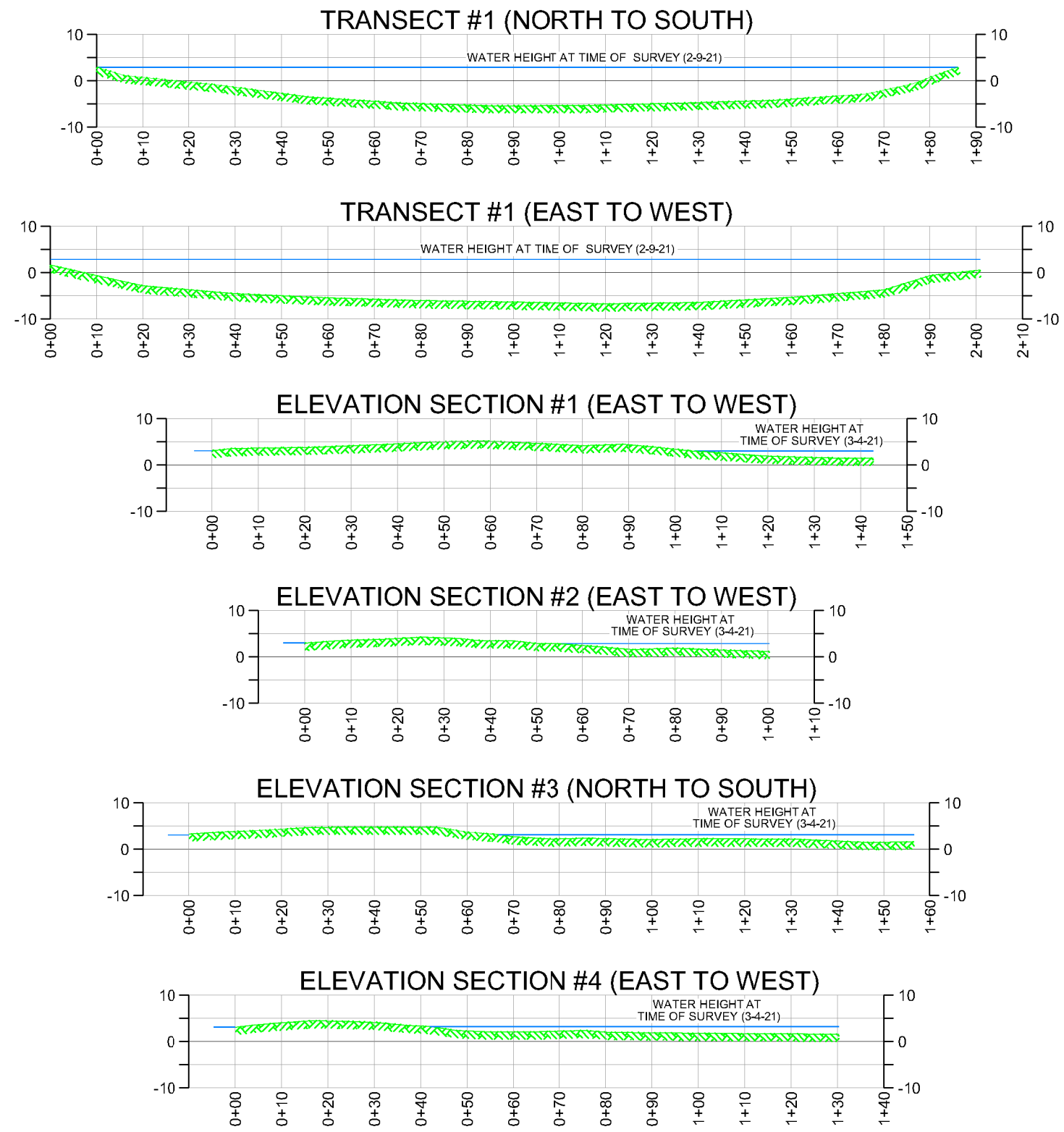
DRAWN BY:	JMH	APPROVED BY:	JMH
DATE:	3/17/21	JOB NO:	2021.0070
DRAWING NAME:		2021.0070AB4.DWG	
PROJECTION: LOUISIANA SOUTH GRID GEO. DATUM: NAD83 VERT. DATUM: NAVD88 GRID UNITS: US SURVEY FEET			
SHEET NO:	4	OF	5

POST-INSTALLATION PHOTOS

Environmental Resources Management

Jeanerette Lumber and Shingle Company
Bayou Pigeon Oil & Gas Field
Iberville and Iberia Parishes
Louisiana

3/18/2021 - P:\Y-2021\2021.0070DWG\POST WELL INSTALLATION WITH ADDITIONAL ELEVATIONS\2021.0070AB5.DWG



SURVEY NOTES:

1. THE FIELD SURVEY WAS PERFORMED BY CONVENTIONAL SURVEY CREW WITH TRIMBLE RTK/WAAS GPS ON 2/1/21, 2/9/21, & 3/4/21 BY T. BAKER SMITH, LLC.
2. TBS FIELD BOOK 4909 PAGE 67-70 & 76-78, BOOK 403 PAGE 18-19.
3. HORIZONTAL POSITIONS SHOWN HEREON ARE BASED ON THE LOUISIANA SOUTH STATE PLANE COORDINATE SYSTEM OF 1983.
4. DATA COLLECTED ON 2/1/21, DUE TO THE REMOTENESS OF THE SITE AND THE LIMITED AVAILABILITY OF C4G REFERENCE NETWORK COVERAGE, HORIZONTAL COORDINATES ARE DERIVED FROM A WAAS ENABLED GPS RECEIVER.
5. ALL ELEVATIONS ARE REFERENCED TO HEIGHT OF WATER AT THE TIME OF SURVEY.
6. WATER ELEVATIONS WERE ESTABLISHED THROUGH LIMITED C4G OBSERVATIONS.
7. ALL UNITS OF MEASUREMENT SHOWN HEREON ARE IN U.S. SURVEY FEET.
8. DATA COLLECTED ON 2/9/21 & 3/4/21 HORIZONTAL AND VERTICAL CONTROL WERE ESTABLISHED THROUGH STATIC GPS OBSERVATIONS ON MONUMENT 1002. POSITIONS WERE CORRECTED THROUGH THE NATIONAL GEODETIC SURVEYS ONLINE POSITIONING USER SERVICE.
9. THE NEAREST CONTROLLING C4G REFERENCE STATION IS BSRL, BAYOU SORREL, LA.
10. USGS DOQQ IMAGERY USED FOR BACKGROUND PHOTOGRAPHY.

I CERTIFY THAT THE SURVEY DEPICTED ON THIS PLAN WAS PERFORMED UNDER MY SUPERVISION IN ACCORDANCE WITH GENERALLY ACCEPTED SURVEY PRACTICES. THIS SURVEY DOES NOT MEET THE STANDARDS OF PRACTICE FOR BOUNDARY SURVEYS AS SET FORTH BY THE LOUISIANA PROFESSIONAL ENGINEERS AND LAND SURVEYORS BOARD.

3/17/21

APPROVED: *Shane J. Kirkland*
 SHANE J. KIRKLAND, P.L.S.
 LAND SURVEYOR REG. NO. 5142
 P.O. BOX 2244 HOUMA, LA 70068-1050

NOTES:

T. BAKER SMITH
 A CENTURY OF SOLUTIONS
 412 South Van Ave, Houma, LA 70363
 (985)868-1050 - tbsmith.com

SCALE IN FEET

REV. NO: 00	REV. DATE: --/--	REV. BY: --
REVISION DESCRIPTION:		
-		

DRAWN BY: JMH	APPROVED BY: JMH
DATE: 3/17/21	JOB NO: 2021.0070
DRAWING NAME: 2021.0070AB5.DWG	
PROJECTION: LOUISIANA SOUTH GRID GEO. DATUM: NAD83 VERT. DATUM: NAVD88 GRID UNITS: US SURVEY FEET	
SHEET NO: 5	OF 5

TRANSECTS AND ELEVATION SECTIONS

Environmental Resources Management

Jeanerette Lumber and Shingle Company
 Bayou Pigeon Oil & Gas Field
 Iberville and Iberia Parishes
 Louisiana