



COMPANY PIONEER OIL & GAS - Location of Well
 JEANERETTE LUMPER & SONS
 RAYOU PIGEON

WELL # 1
 JEANERETTE LUMPER & SONS COMPANY
 RAYOU PIGEON

LOCATION 13-125-10E
 COMPOSITE LOG RUNS # 1
 FIELD RAYOU PIGEON

COUNTY FERRELL
 STATE LOUISIANA

DATE 7-6-58
 TIME 7:12 AM
 RUNS 1

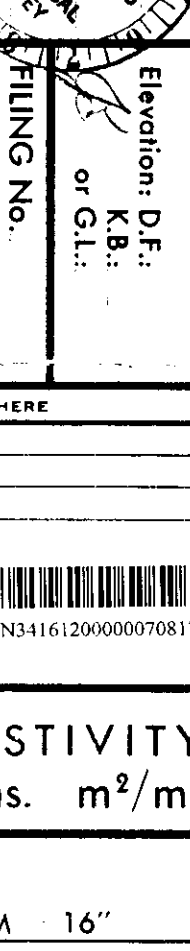
DEPTH REACHED 9200'
 BOTTOM DRIER 9200'

VELOCITY 47
 RESIST. 152 @ 14 F
 READING 100 @ 14 F

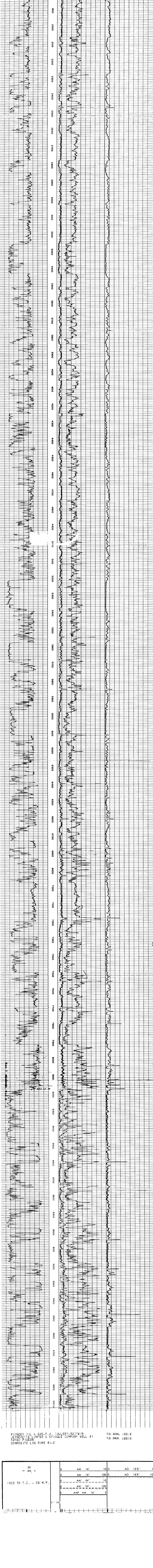
MAX. TEMP. 113
 WIR. LOGS 113 @ 30 min

BL. SIZE 9-7/8"
 SPEC. AM 16"

OPER. RIG TIME 4 HRS
 TOWER & DIST. 1535-CLIN
 RECORDED BY SIMONS
 WITNESSED BY SIMONS



REMARKS



DEPTH	RESISTIVITY -ohms. m ² /m	POTENTIAL millivolts
0	100	0
100	100	0
1000	100	0
2000	100	0
3000	100	0
4000	100	0
5000	100	0
6000	100	0
7000	100	0
8000	20	-20
8500	20	-20
9000	20	-20
9200	20	-20

PIONEER OIL & GAS - FAYOU PIGEON
 JEANERETTE LUMPER & SONS COMPANY WELL #1
 COMPOSITE LOG RUNS #1-1

T.D. SCHL 100.6
 T.D. DR. 100.10