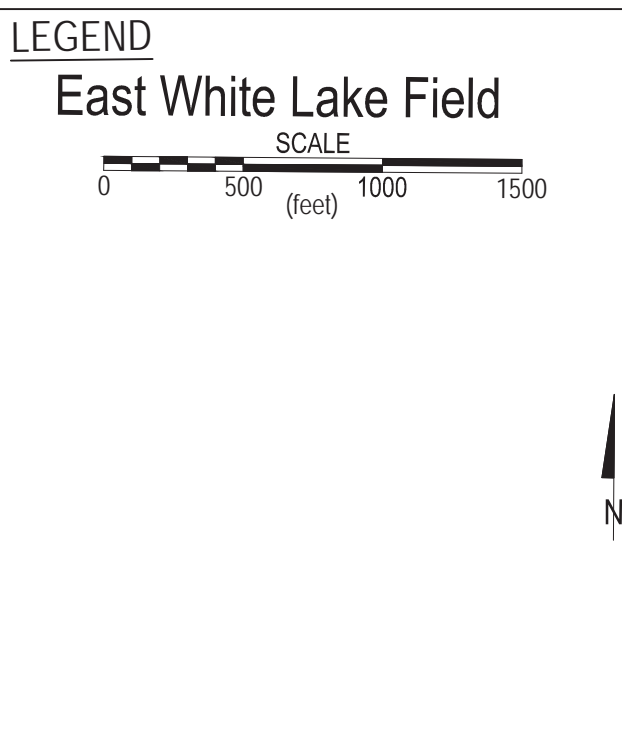


3490-02

1:18000



17

16

VPSB PROPERTY


Figure 1-1
 1935 HISTORICAL AERIAL IMAGE
 State of Louisiana and Vermilion Parish School Board v Louisiana Land and Exploration et al; Docket No. 82162, Div "D"; 15th JDC
 East White Lake Field, Vermilion Parish, LA

		Date:	Dec 2015
<small>2049 Commercial Dr., Port Allen, LA 70767</small>		Figure	1-1
File Name:	whitelake2009.dwg	Drawn By:	GWM
Project Number:	9077-041-0100		
File Directory:			



Figure 1-2
1940 HISTORICAL AERIAL IMAGE

State of Louisiana and Vermilion Parish School Board v Louisiana Land and Exploration et al; Docket No. 82162, Div "D"; 15th JDC
East White Lake Field, Vermilion Parish, LA

		Date:	Dec 2015
File Name: whitelake2009.dwg	Project Number: 9077-041-0100	Figure	1-2
File Directory	Drawn By: GWM		

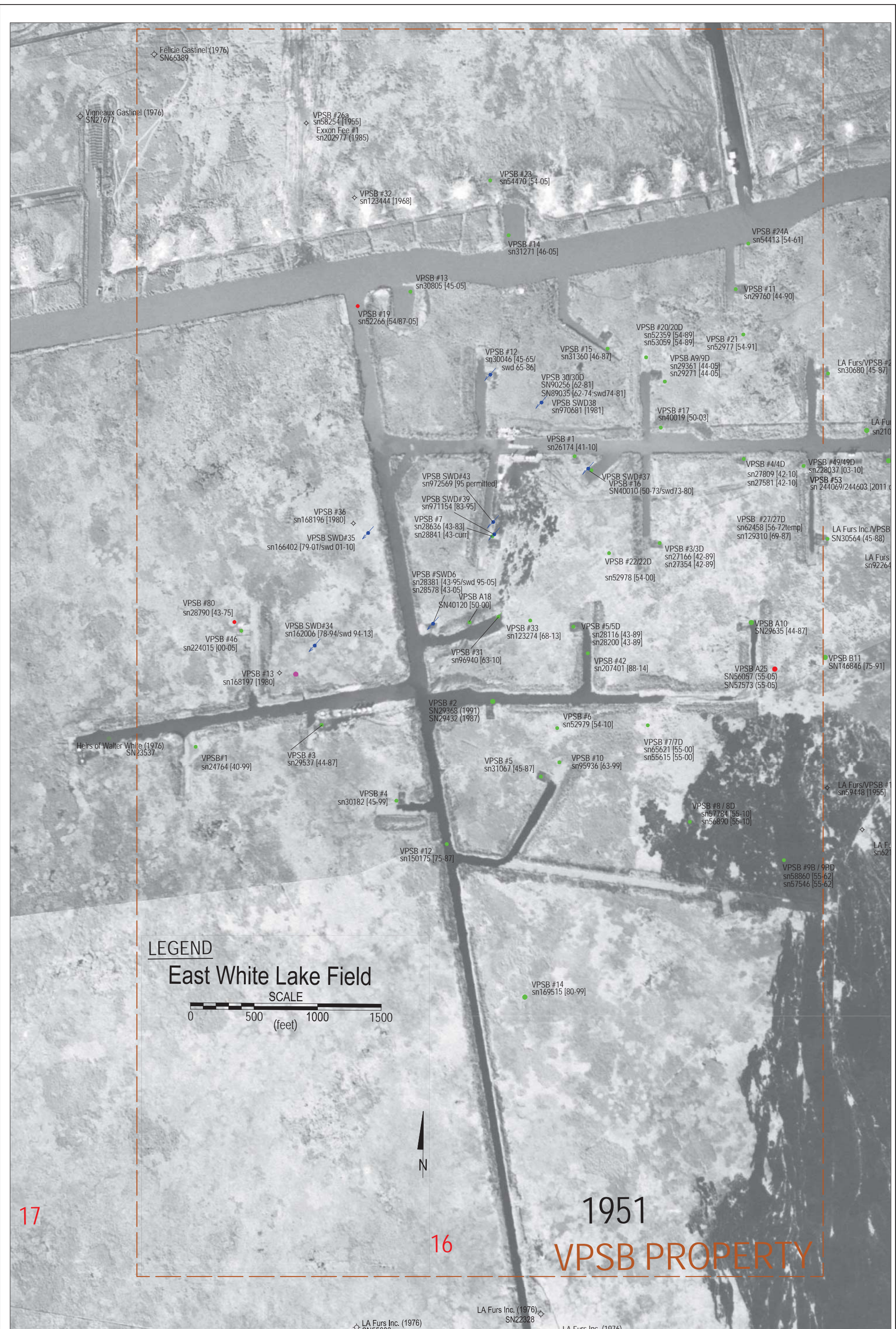


Figure 1-3
 1951 HISTORICAL AERIAL IMAGE
 State of Louisiana and Vermilion Parish School Board v Louisiana Land and Exploration et al; Docket No. 82162, Div "D"; 15th JDC
 East White Lake Field, Vermilion Parish, LA

		Date:	Dec 2015
		Figure	1-3
File Name:	whitelake2009.dwg	Project Number:	9077-041-0100
File Directory		Drawn By	GWM



Figure 1-4
 1964 HISTORICAL AERIAL IMAGE
 State of Louisiana and Vermilion Parish School Board v Louisiana Land and Exploration et al; Docket No. 82162, Div "D"; 15th JDC
 East White Lake Field, Vermilion Parish, LA

		Date:	Dec 2015
		Figure	1-4
File Name:	whitelake2009.dwg	Drawn By:	GWM
Project Number:	9077-041-0100		
File Directory:			

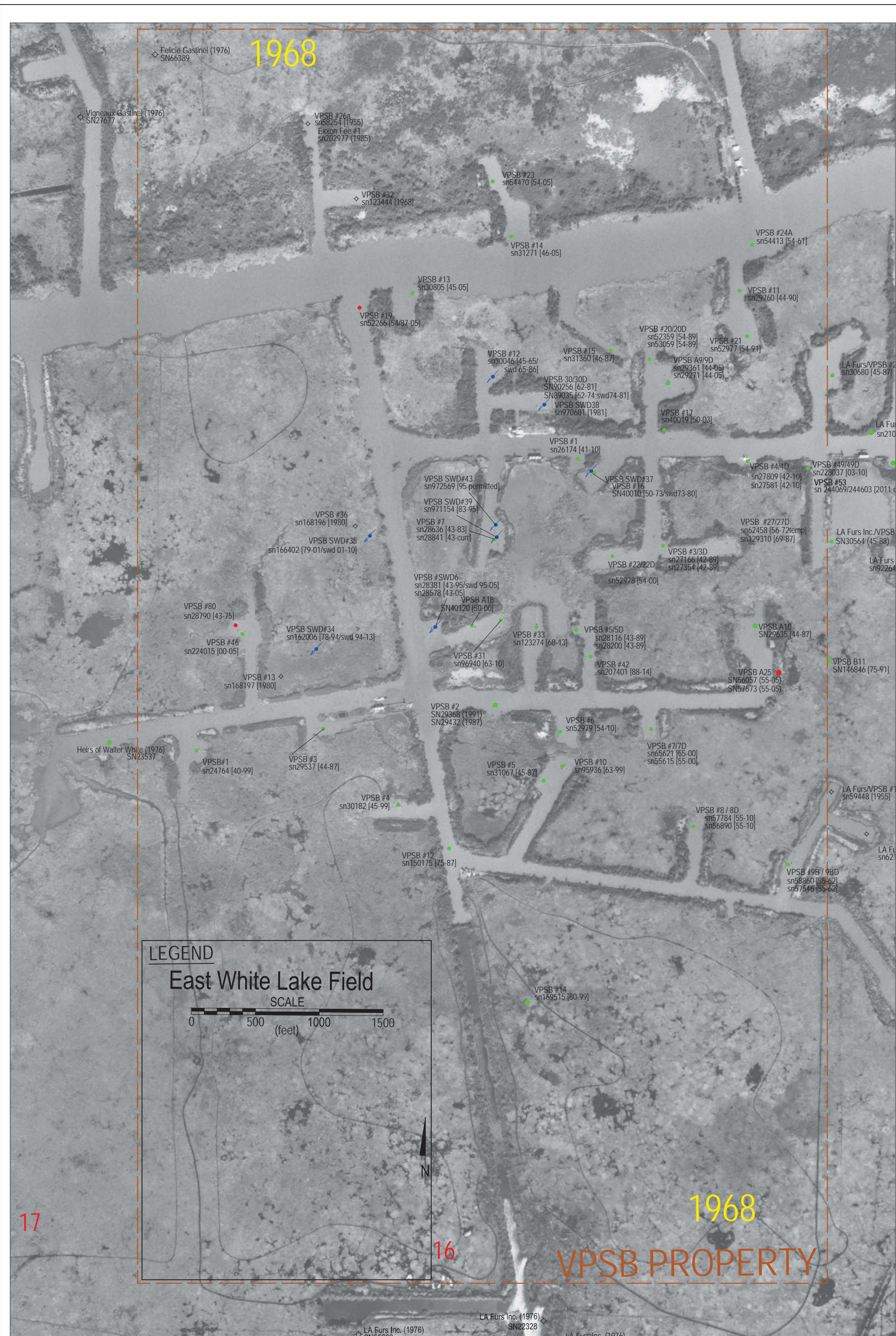


Figure 1-5
 1968 HISTORICAL AERIAL IMAGE
 State of Louisiana and Vermilion Parish School Board v Louisiana Land and Exploration et al; Docket No. 82162, Div "D"; 15th JDC
 East White Lake Field, Vermilion Parish, LA

		File Name: whitelake2009.dwg	Date: Dec 2015
		Project Number: 9077-041-0100	Figure 1-5
File Directory		1-5	
Drawn By: GWM			

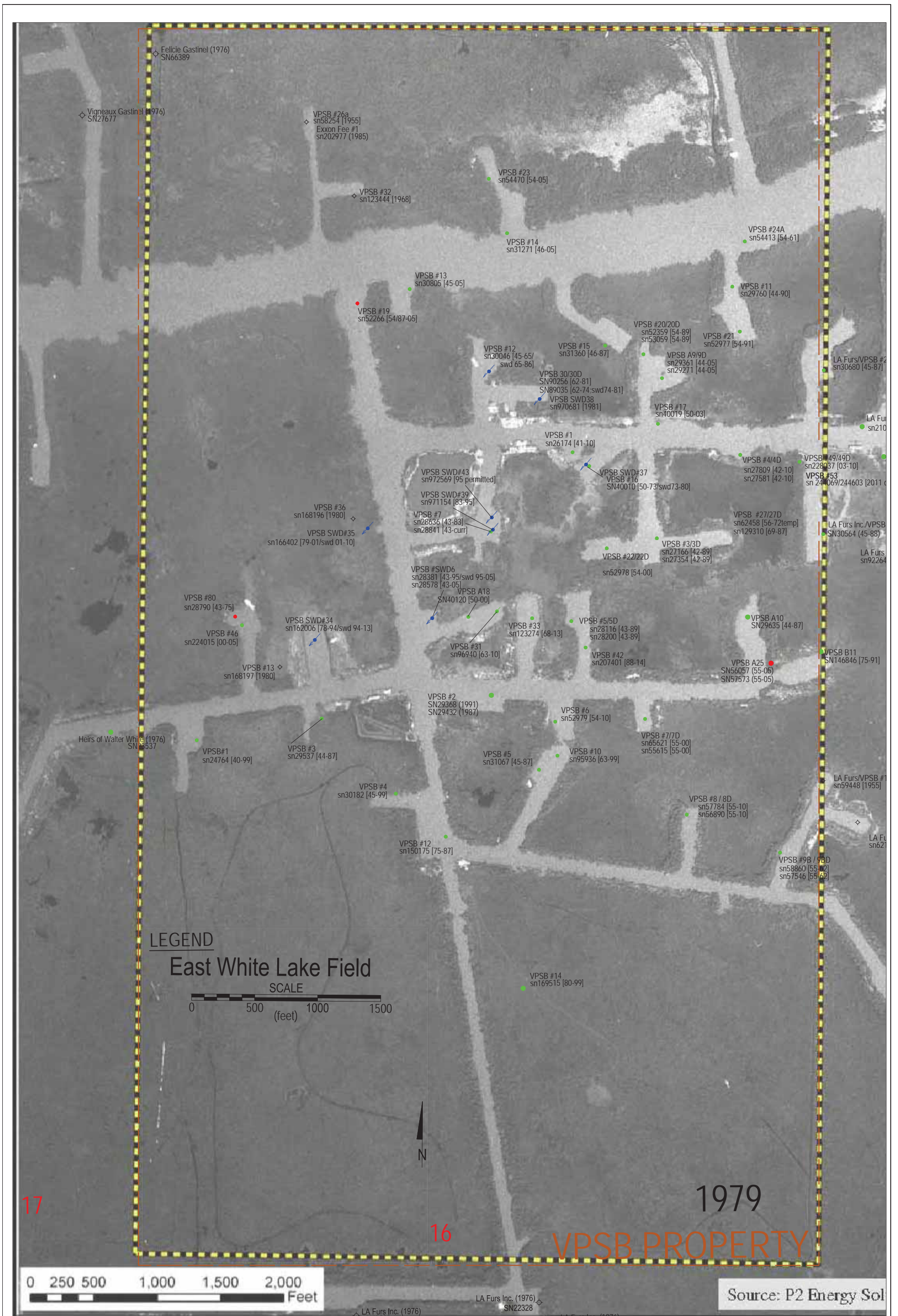


Figure 1-6
 1979 HISTORICAL AERIAL IMAGE
 State of Louisiana and Vermilion Parish School Board v Louisiana Land and Exploration et al; Docket No. 82162, Div "D"; 15th JDC
 East White Lake Field, Vermilion Parish, LA

 2049 Commercial Dr., Port Allen, LA 70767		File Name: whitelake2009.dwg	Date: Dec 2015
		Project Number: 9077-041-0100	Figure 1-6
File Directory		Drawn By: GWM	

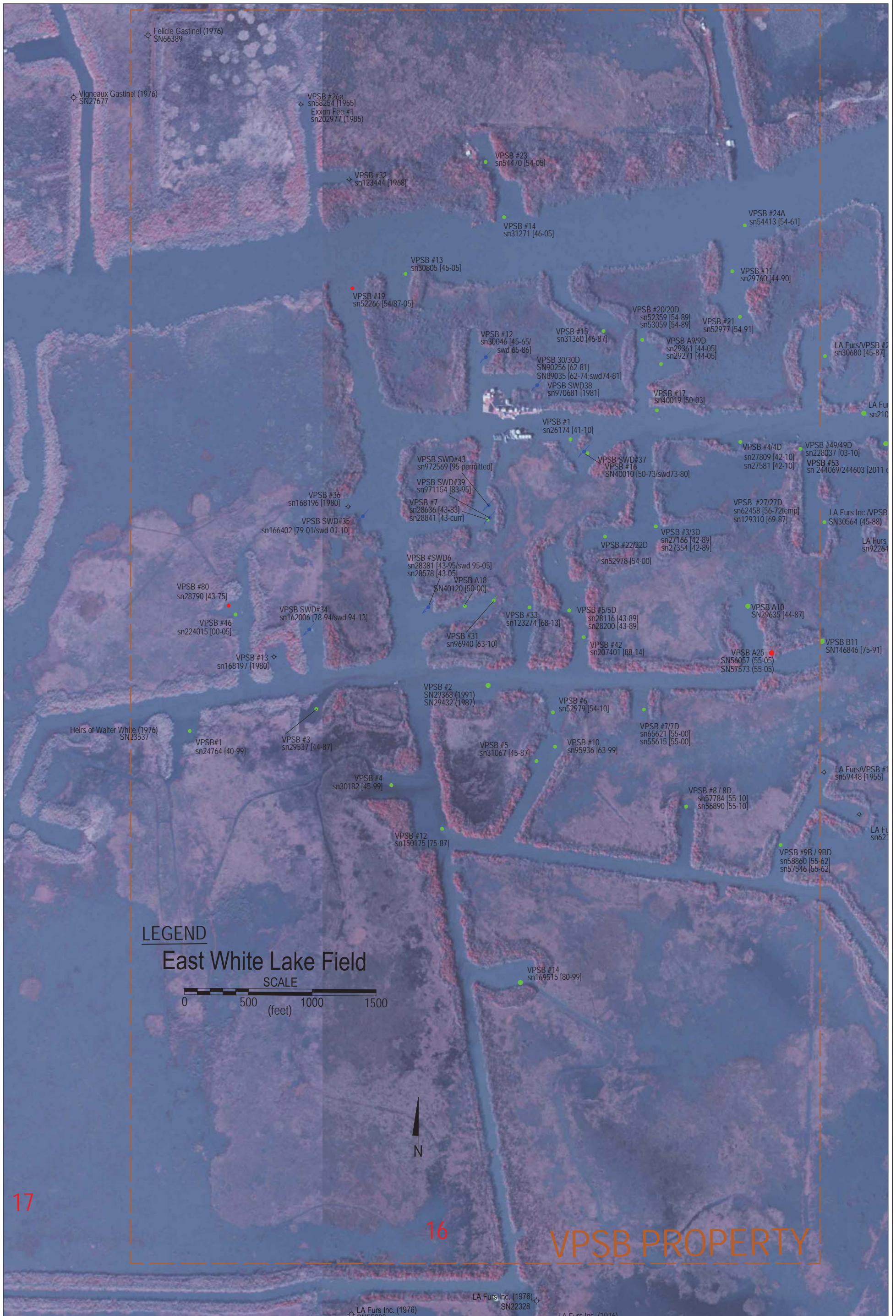


Figure 1-8
2004 HISTORICAL AERIAL IMAGE

State of Louisiana and Vermilion Parish School Board v Louisiana Land and Exploration et al; Docket No. 82162, Div "D"; 15th JDC
East White Lake Field, Vermilion Parish, LA

2049 Commercial Dr., Port Allen, LA 70767	
File Name: whitelake2009.dwg	Date: Dec 2015
Project Number: 9077-041-0100	Figure: 1-8
File Directory	
Drawn By: GWM	



Figure 1-9
 2014 IMAGE WITH ACTIVE OIL AND GAS WELLS
 State of Louisiana and Vermilion Parish School Board v Louisiana Land and Exploration et al; Docket No. 82162, Div "D"; 15th JDC
 East White Lake Field, Vermilion Parish, LA

		Date:	Dec 2015
		Figure:	1-9
File Name:	whitelake2009.dwg	File Directory:	
Project Number:	9077-041-0100	Drawn By:	GWM

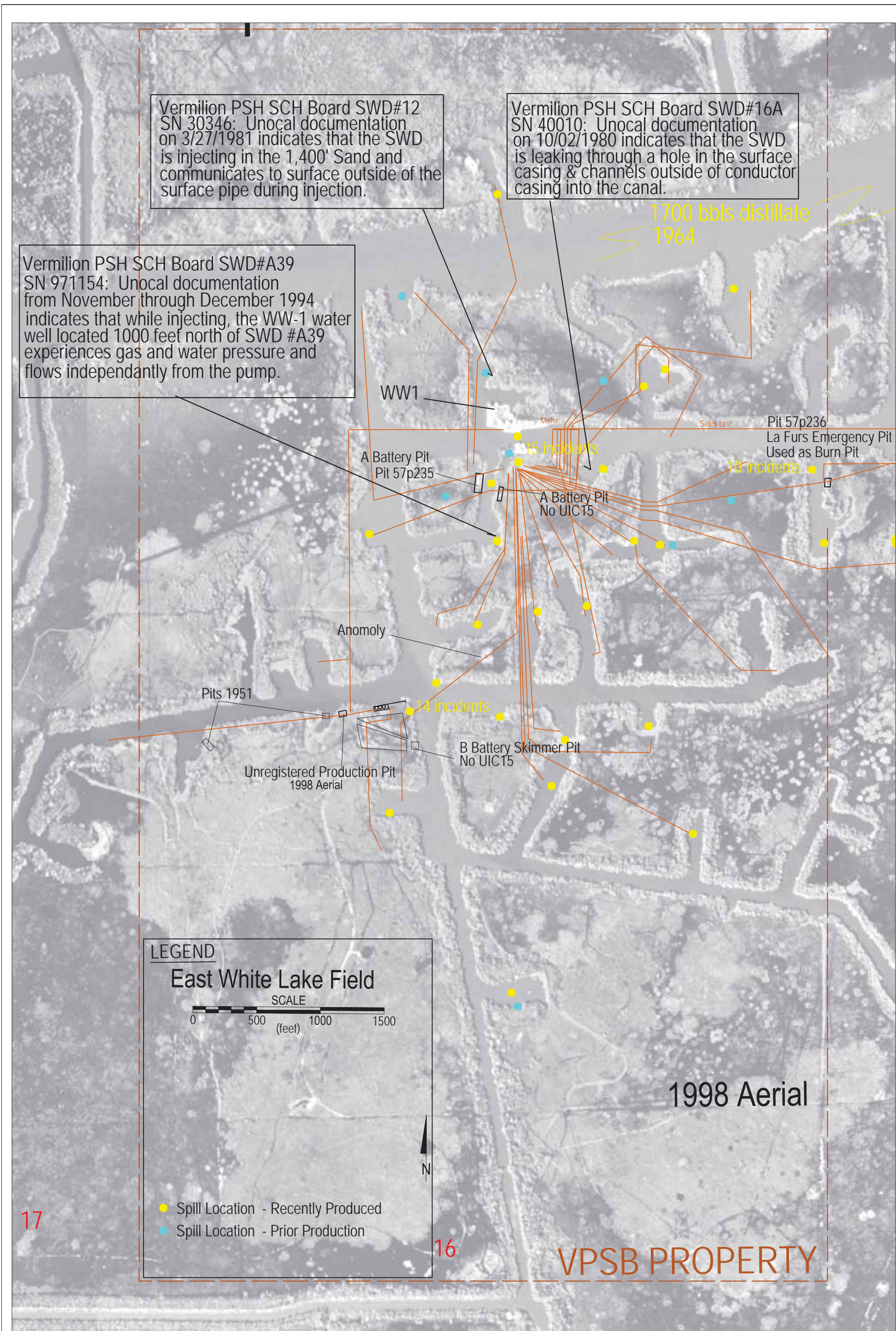


Figure 1-10
LOCATIONS OF PITS, TANK BATTERIES, FLOWLINES AND SWD BREACHES

State of Louisiana and Vermilion Parish School Board v Louisiana Land and Exploration et al; Docket No. 82162, Div "D"; 15th JDC
East White Lake Field, Vermilion Parish, LA

		Date:	Dec 2015
		Figure	1-10
File Name:	whitelake2009.dwg	File Directory:	
Project Number:	9077-041-0100	Drawn By:	GWM