

TRACT 45677 - Red River Parish, Louisiana

All of the lands now or formerly constituting the beds and bottoms of all water bodies of every nature and description as to which title is vested in the State of Louisiana, together with all islands arising therein and other lands formed by accretion or by reliction, where allowed by law, excepting tax adjudicated lands, and not presently under mineral lease on October 11, 2023, situated in Red River Parish, Louisiana, and more particularly described as follows: Beginning at a point being the Northernmost Southwest corner of State Lease No. 20114, as amended, having Coordinates of X = 1,729,632.76 and Y = 482,698.89; thence South 89 degrees 28 minutes 08 seconds East 9,381.19 feet along the boundary of said State Lease No. 20114, as amended, to a point being its Southeast corner having Coordinates of X = 1,739,013.55 and Y = 482,611.93; thence East 1,154.63 feet to a point having Coordinates of X = 1,740,168.18 and Y = 482,611.93; thence South 5,246.93 feet to a point being the Northeast corner of State Lease No. 22053 having Coordinates of X = 1,740,168.18 and Y = 477,365.00; thence West 10,516.18 feet along the Northern boundary of said State Lease No. 22053 to a point having Coordinates of X = 1,729,652.00 and Y = 477,365.00; thence North 00 degrees 12 minutes 24 seconds West 5,333.92 feet to the point of beginning, containing approximately **174 acres**, all as more particularly outlined on a plat on file in the Office of Mineral Resources, Department of Natural Resources. All bearings, distances and coordinates are based on Louisiana Coordinate System of 1927, (North or South Zone), where applicable.

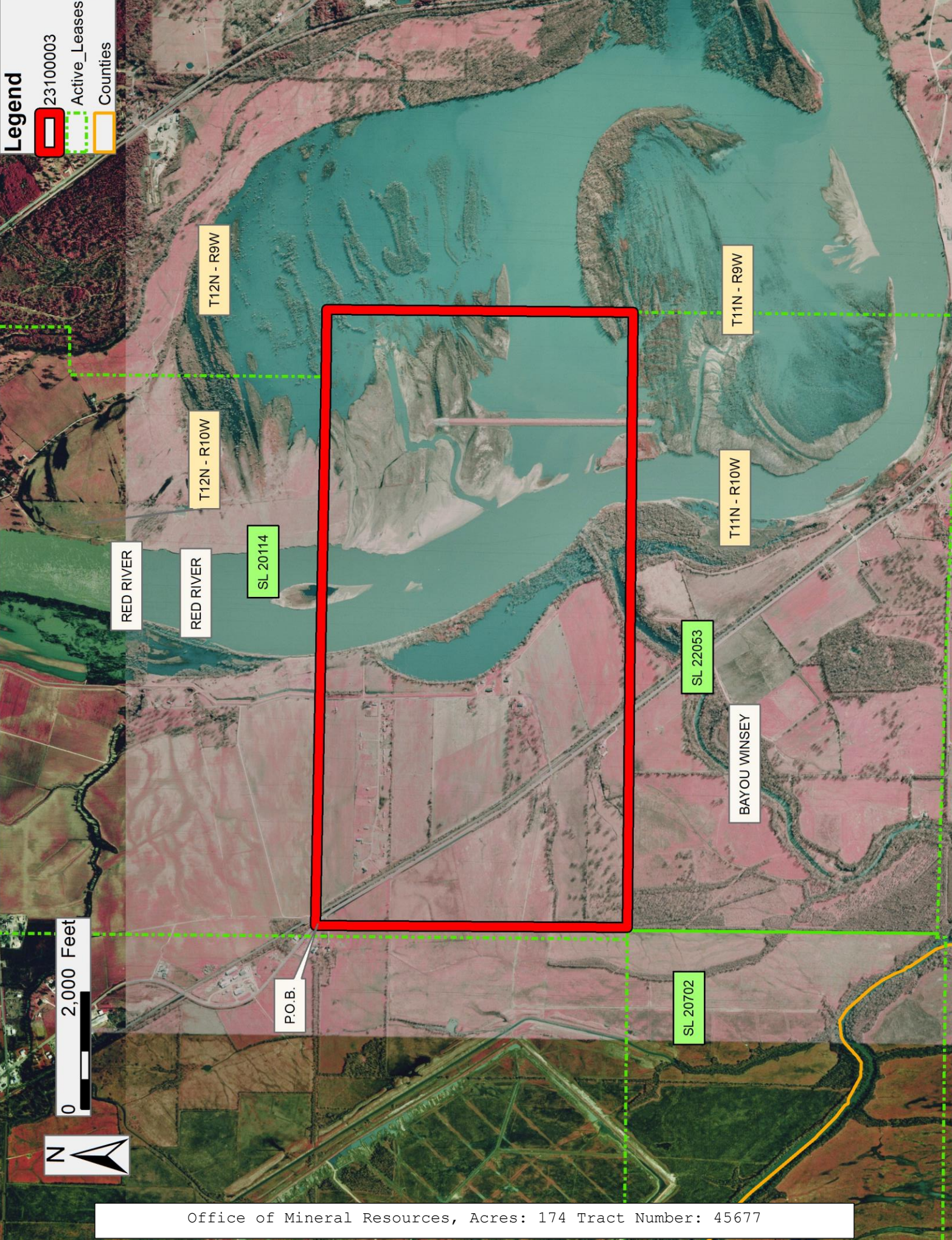
NOTE: The above description of the Tract nominated for lease has been provided and corrected, where required, exclusively by the nomination party. Any mineral lease selected from this Tract and awarded by the Louisiana State Mineral and Energy Board shall be without warranty of any kind, either express, implied, or statutory, including, but not limited to, the implied warranties of merchantability and fitness for a particular purpose. Should the mineral lease awarded by the Louisiana State Mineral and Energy Board be subsequently modified, cancelled or abrogated due to the existence of conflicting leases, operating agreements, private claims or other future obligations or conditions which may affect all or any portion of the leased Tract, it shall not relieve the Lessee of the obligation to pay any bonus due thereon to the Louisiana State Mineral and Energy Board, nor shall the Louisiana State Mineral and Energy Board be obligated to refund any consideration paid by the Lessor prior to such modification, cancellation, or abrogation, including, but not limited to, bonuses, rentals and royalties.

Applicant: MARK A. O'NEAL AND ASSOCIATES, INC

Bidder	Cash Payment	Price/ Acre	Rental	Oil	Gas	Other

Legend

- 23100003
- Active_Leases
- Counties



Office of Mineral Resources, Acres: 174 Tract Number: 45677

TRACT 45678 - De Soto and Red River Parishes, Louisiana

All of the lands now or formerly constituting the beds and bottoms of all water bodies of every nature and description as to which title is vested in the State of Louisiana, together with all islands arising therein and other lands formed by accretion or by reliction, where allowed by law, excepting tax adjudicated lands, and not presently under mineral lease on October 11, 2023, situated in De Soto and Red River Parishes, Louisiana, and more particularly described as follows: Beginning at a point on the South boundary of State Lease No. 20156, as amended, having Coordinates of X = 1,719,021.02 and Y = 477,365.00; thence East 5,043.98 feet along a Southern boundary of said State Lease No. 20156, as amended, to a point being its Southeast corner, said point also being the Northwest corner of State Lease No. 20702 having Coordinates of X = 1,724,065.00 and Y = 477,365.00; thence South 5,445.00 feet along the West boundary of said State Lease No. 20702 to a point being its Southwest corner having Coordinates of X = 1,724,065.00 and Y = 471,920.00; thence North 87 degrees 28 minutes 41 seconds West 5,113.40 feet to a point being the Southeast corner of State Lease No. 21923 having Coordinates of X = 1,718,956.55 and Y = 472,145.00; thence North 00 degrees 42 minutes 27 seconds East 5,220.40 feet along the Eastern boundary of said State Lease No. 21923 to the point of beginning, containing approximately **9 acres**, all as more particularly outlined on a plat on file in the Office of Mineral Resources, Department of Natural Resources. All bearings, distances and coordinates are based on Louisiana Coordinate System of 1927, (North or South Zone), where applicable.

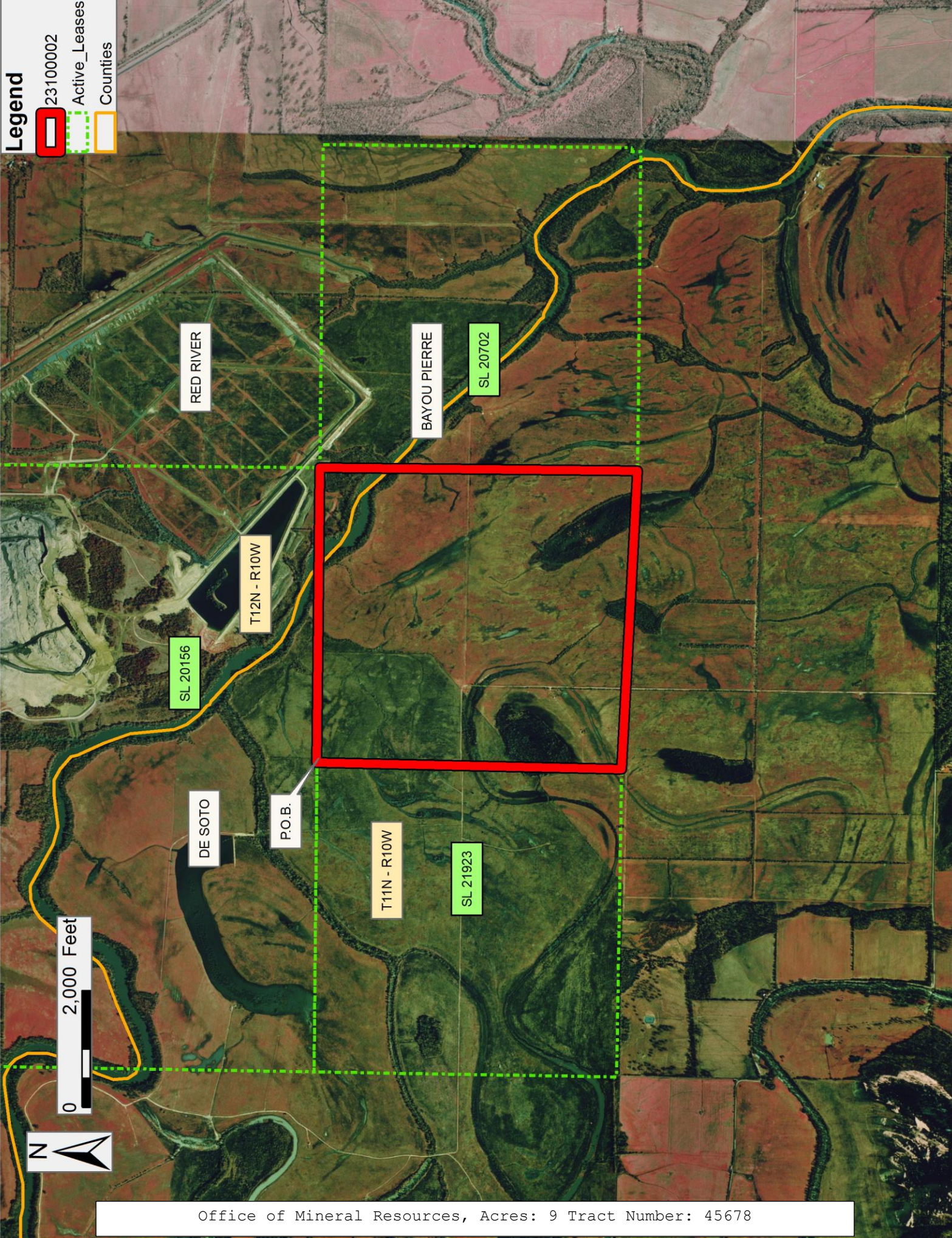
NOTE: The above description of the Tract nominated for lease has been provided and corrected, where required, exclusively by the nomination party. Any mineral lease selected from this Tract and awarded by the Louisiana State Mineral and Energy Board shall be without warranty of any kind, either express, implied, or statutory, including, but not limited to, the implied warranties of merchantability and fitness for a particular purpose. Should the mineral lease awarded by the Louisiana State Mineral and Energy Board be subsequently modified, cancelled or abrogated due to the existence of conflicting leases, operating agreements, private claims or other future obligations or conditions which may affect all or any portion of the leased Tract, it shall not relieve the Lessee of the obligation to pay any bonus due thereon to the Louisiana State Mineral and Energy Board, nor shall the Louisiana State Mineral and Energy Board be obligated to refund any consideration paid by the Lessor prior to such modification, cancellation, or abrogation, including, but not limited to, bonuses, rentals and royalties.

Applicant: MARK A. NEAL & ASSOCIATES, INC

Bidder	Cash Payment	Price/Acre	Rental	Oil	Gas	Other

Legend

- 23100002
- Active_Leases
- Counties



Office of Mineral Resources, Acres: 9 Tract Number: 45678

TRACT 45679 - De Soto and Natchitoches Parishes, Louisiana

All of the lands now or formerly constituting the beds and bottoms of all water bodies of every nature and description as to which title is vested in the State of Louisiana, together with all islands arising therein and other lands formed by accretion or by reliction, where allowed by law, excepting tax adjudicated lands, and not presently under mineral lease on October 11, 2023, situated in De Soto and Natchitoches Parishes, Louisiana, and more particularly described as follows: Beginning at a point being the Southeast corner of State Lease No. 21780, also being the Northeast corner of retained area B of State Lease No. 20721, as amended, having Coordinates of X = 1,713,574.37 and Y = 466,872.23; thence South 89 degrees 21 minutes 47 seconds East 10,613.56 feet to a point having Coordinates of X = 1,724,187.27 and Y = 466,754.27; thence South 01 degrees 24 minutes 01 seconds West 5,054.13 feet to the Northernmost Northwest corner of State Lease No. 21981 having Coordinates of X = 1,724,063.77 and Y = 461,701.65; thence along the west boundary of said State Lease No. 21981 the following courses: South 00 degrees 07 minutes 20 seconds East 5,471.09 feet to a point having Coordinates of X = 1,724,075.44 and Y = 456,230.57, North 89 degrees 07 minutes 46 seconds West 5,383.03 feet to a point having Coordinates of X = 1,718,693.03 and Y = 456,312.36 and South 01 degrees 05 minutes 04 seconds East 5,540.80 feet to its Southernmost Southwest corner having Coordinates of X = 1,718,797.89 and Y = 450,772.55; thence North 88 degrees 42 minutes 47 seconds West 10,702.45 feet to the Southeast corner of State Lease No. 21781 having Coordinates of X = 1,708,098.14 and Y = 451,012.92; thence North 01 degrees 11 minutes 30 seconds East 5,343.37 feet along the East boundary of said State Lease No. 21781 to its Northeast corner having Coordinates of X = 1,708,209.27 and Y = 456,355.14; thence North 00 degrees 12 minutes 28 seconds West 5,314.90 feet to the Southeast corner of State Lease No. 20159, also being the Southwest corner of said retained area B of State Lease No. 20721 having Coordinates of X = 1,708,190.00 and Y = 461,670.00; thence along the boundary of said State Lease No. 20721 the following courses: East 5,193.13 feet to a point having Coordinates of X = 1,713,383.13 and Y = 461,670.00, North 00 degrees 19 minutes 35 seconds East 83.16 feet to a point having Coordinates of X = 1,713,383.60 and Y = 461,753.16 and North 02 degrees 08 minutes 03 seconds East 5,122.62 feet to the point of beginning, **LESS AND EXCEPT** any right, title, and interest in lands owned by and not under lease from the State of Louisiana, on behalf of the DeSoto Parish School Board, situated in Section 16, Township 10 North, Range 10 West, DeSoto Parish, Louisiana, contained within the above described tract, containing approximately **39 acres**, all as more particularly outlined on a plat on file in the Office of Mineral Resources, Department of Natural Resources. All bearings, distances and coordinates are based on Louisiana Coordinate System of 1927, (North or South Zone), where applicable.

NOTE: The above description of the Tract nominated for lease has been provided and corrected, where required, exclusively by the nomination party. Any mineral lease selected from this Tract and awarded by the Louisiana State Mineral and Energy Board shall be without warranty of any kind, either express, implied, or statutory, including, but not limited to, the implied

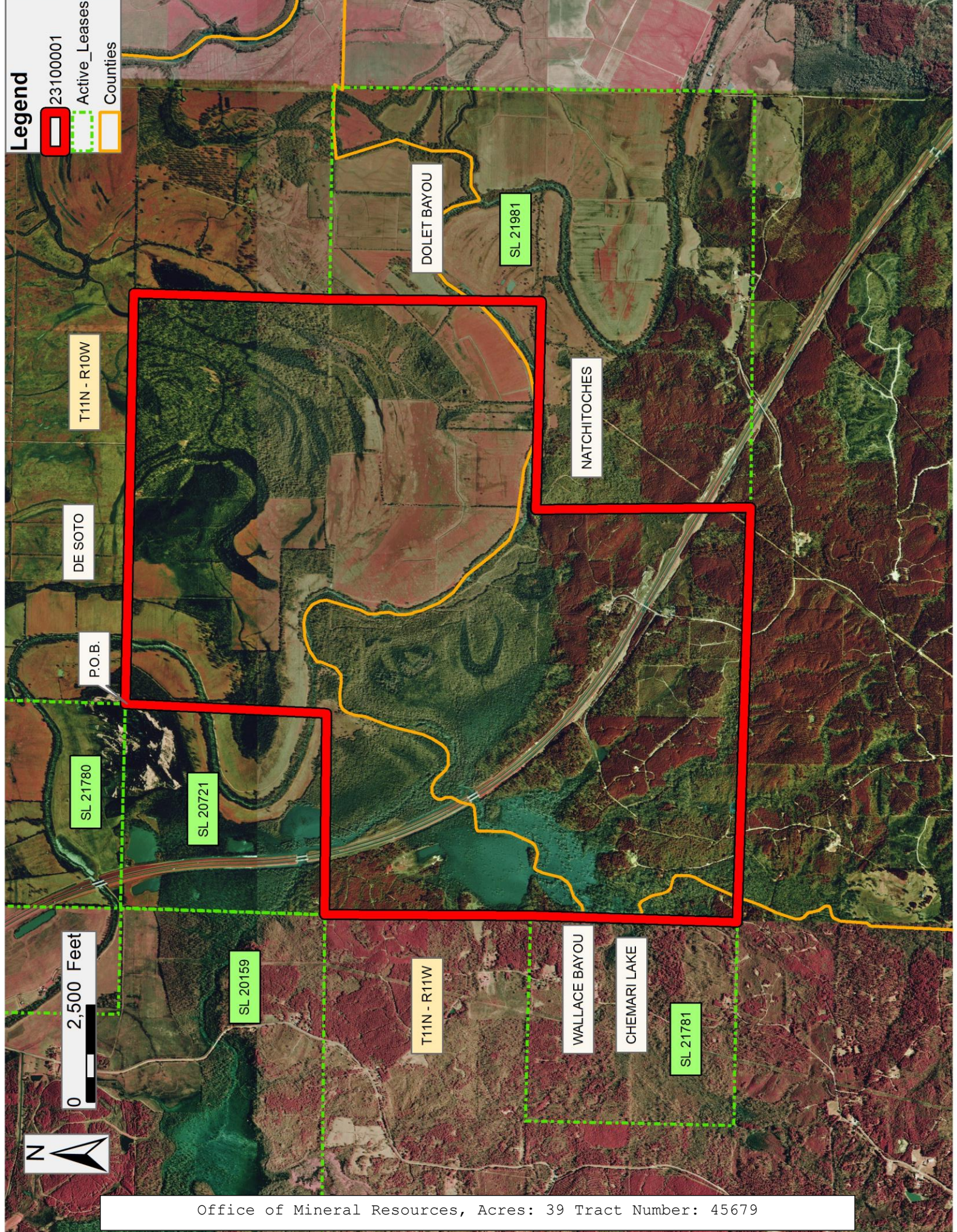
warranties of merchantability and fitness for a particular purpose. Should the mineral lease awarded by the Louisiana State Mineral and Energy Board be subsequently modified, cancelled or abrogated due to the existence of conflicting leases, operating agreements, private claims or other future obligations or conditions which may affect all or any portion of the leased Tract, it shall not relieve the Lessee of the obligation to pay any bonus due thereon to the Louisiana State Mineral and Energy Board, nor shall the Louisiana State Mineral and Energy Board be obligated to refund any consideration paid by the Lessor prior to such modification, cancellation, or abrogation, including, but not limited to, bonuses, rentals and royalties.

Applicant: MARK A. O'NEAL & ASSOCIATES, INC

Bidder	Cash Payment	Price/Acre	Rental	Oil	Gas	Other

Legend

- 23100001
- Active_Leases
- Counties



Office of Mineral Resources, Acres: 39 Tract Number: 45679

TRACT 45680 - Sabine Parish, Louisiana

All of the mineral rights only under land adjudicated to and acquired by the State of Louisiana in and through a proper tax sale, and subsequently alienated by the State which retained the mineral rights thereto, and which is not under valid mineral lease from the State of Louisiana on October 11, 2023, situated in Sabine Parish, Louisiana, and being more fully described as follows: All of the mineral rights only reserved by the State of Louisiana from land sale, being further described as Lot 3 of Section 12, Township 8 North, Range 12 West, Sabine Parish, Louisiana, being the same lands sold to Joe Rains on October 29, 1952 by the State of Louisiana under Patent #17435, containing approximately **14.22 acres**, all as more particularly outlined on a plat on file in the Office of Mineral Resources, Department of Natural Resources. All bearings, distances and coordinates are based on Louisiana Coordinate System of 1927, (North or South Zone), where applicable.

NOTE: The above description of the Tract nominated for lease has been provided and corrected, where required, exclusively by the nomination party. Any mineral lease selected from this Tract and awarded by the Louisiana State Mineral and Energy Board shall be without warranty of any kind, either express, implied, or statutory, including, but not limited to, the implied warranties of merchantability and fitness for a particular purpose. Should the mineral lease awarded by the Louisiana State Mineral and Energy Board be subsequently modified, cancelled or abrogated due to the existence of conflicting leases, operating agreements, private claims or other future obligations or conditions which may affect all or any portion of the leased Tract, it shall not relieve the Lessee of the obligation to pay any bonus due thereon to the Louisiana State Mineral and Energy Board, nor shall the Louisiana State Mineral and Energy Board be obligated to refund any consideration paid by the Lessor prior to such modification, cancellation, or abrogation, including, but not limited to, bonuses, rentals and royalties.

NOTE: Well to be excluded from the above description and any leases awarded out of the above description is as follows: 1) HA RA SUW; Olympia Min 12 #1 (Serial #243851)

NOTE: No surface activity on this tract undertaken in conjunction with any operations under any mineral lease given on this tract will be allowed without prior approval of the surface owner and further, no such right of surface use shall be deemed to have been given as part of any mineral lease by the State of Louisiana on this tract.

Applicant: MARK A. O'NEAL AND ASSOCIATES, INC

Bidder	Cash Payment	Price/Acre	Rental	Oil	Gas	Other

Legend



23100004



0 500 Feet

SABINE

T8N - R12W

SEC 12

SEC 13



X 2-107
2637

12

Bayou

231 TX