

TRACT 45740 - Caddo Parish, Louisiana

All of the land adjudicated to and acquired by the State of Louisiana in and through a proper tax sale, including surface and mineral rights, owned by and not already under valid mineral lease from the State of Louisiana on February 14, 2024, situated in Caddo Parish, Louisiana, and being more fully described as follows: Lot 14, J. B. Lewis Lands out of the North West 4 of Sec. 19 Township 17 North Range 14 West. More particularly described in that certain Sheriff Sale recorded on April 22, 1927 in Conveyance Book 244, Page 513 under Instrument Number 35556 of the Conveyance Records of Caddo Parish, Louisiana, containing **1.65 acres**, all as more particularly outlined on a plat on file in the Office of Mineral Resources, Department of Natural Resources. All bearings, distances and coordinates are based on Louisiana Coordinate System of 1927, (North or South Zone), where applicable.

NOTE: The above description of the Tract nominated for lease has been provided and corrected, where required, exclusively by the nomination party. Any mineral lease selected from this Tract and awarded by the Louisiana State Mineral and Energy Board shall be without warranty of any kind, either express, implied, or statutory, including, but not limited to, the implied warranties of merchantability and fitness for a particular purpose. Should the mineral lease awarded by the Louisiana State Mineral and Energy Board be subsequently modified, cancelled or abrogated due to the existence of conflicting leases, operating agreements, private claims or other future obligations or conditions which may affect all or any portion of the leased Tract, it shall not relieve the Lessee of the obligation to pay any bonus due thereon to the Louisiana State Mineral and Energy Board, nor shall the Louisiana State Mineral and Energy Board be obligated to refund any consideration paid by the Lessor prior to such modification, cancellation, or abrogation, including, but not limited to, bonuses, rentals and royalties.

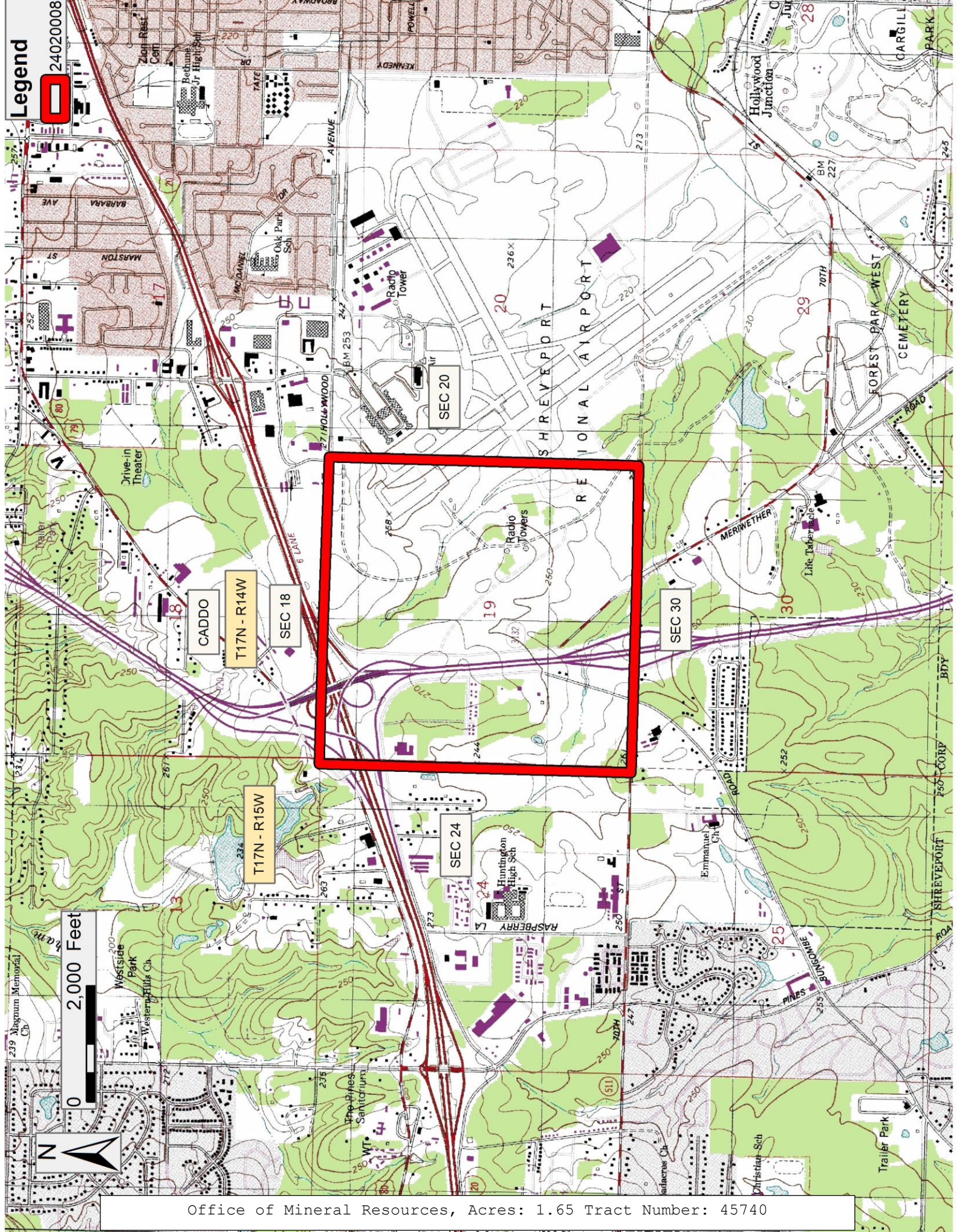
Applicant: CYPRESS ENERGY PARTNERS, LLC

Bidder	Cash Payment	Price/Acre	Rental	Oil	Gas	Other

Legend



24020008



2,000 Feet



Office of Mineral Resources, Acres: 1.65 Tract Number: 45740