

**TRACT 45760 - Iberia Parish, Louisiana**

All of the lands now or formerly constituting the beds and bottoms of all water bodies of every nature and description as to which title is vested in the State of Louisiana, together with all islands arising therein and other lands formed by accretion or by reliction, where allowed by law, excepting tax adjudicated lands, and not presently under mineral lease on May 8, 2024, situated in Iberia Parish, Louisiana, and more particularly described as follows: Beginning at a point having Coordinates of X = 1,799,756.18 and Y = 426,902.21; thence East 7,379.00 feet to a point having Coordinates of X = 1,807,135.18 and Y = 426,902.21; thence South 14,758.00 feet to a point having Coordinates of X = 1,807,135.18 and Y = 412,144.21; thence West 7,379.00 feet to a point having Coordinates of X = 1,799,756.18 and Y = 412,144.21; thence North 14,758.00 feet to the point of beginning, beginning, **LESS AND EXCEPT** any right, title, and interest in lands owned by and not under lease from the State of Louisiana, on behalf of the Iberia and Vermilion Parish School Boards, situated in Section 16, Township 14 South, Range 5 East, Iberia and Vermilion Parishes, Louisiana, contained within the above described tract, containing approximately **1,960 acres**, all as more particularly outlined on a plat on file in the Office of Mineral Resources, Department of Natural Resources. All bearings, distances and coordinates are based on Louisiana Coordinate System of 1927, (North or South Zone), where applicable.

NOTE: The above description of the Tract nominated for lease has been provided and corrected, where required, exclusively by the nomination party. Any mineral lease selected from this Tract and awarded by the Louisiana State Mineral and Energy Board shall be without warranty of any kind, either express, implied, or statutory, including, but not limited to, the implied warranties of merchantability and fitness for a particular purpose. Should the mineral lease awarded by the Louisiana State Mineral and Energy Board be subsequently modified, cancelled or abrogated due to the existence of conflicting leases, operating agreements, private claims or other future obligations or conditions which may affect all or any portion of the leased Tract, it shall not relieve the Lessee of the obligation to pay any bonus due thereon to the Louisiana State Mineral and Energy Board, nor shall the Louisiana State Mineral and Energy Board be obligated to refund any consideration paid by the Lessor prior to such modification, cancellation, or abrogation, including, but not limited to, bonuses, rentals and royalties.

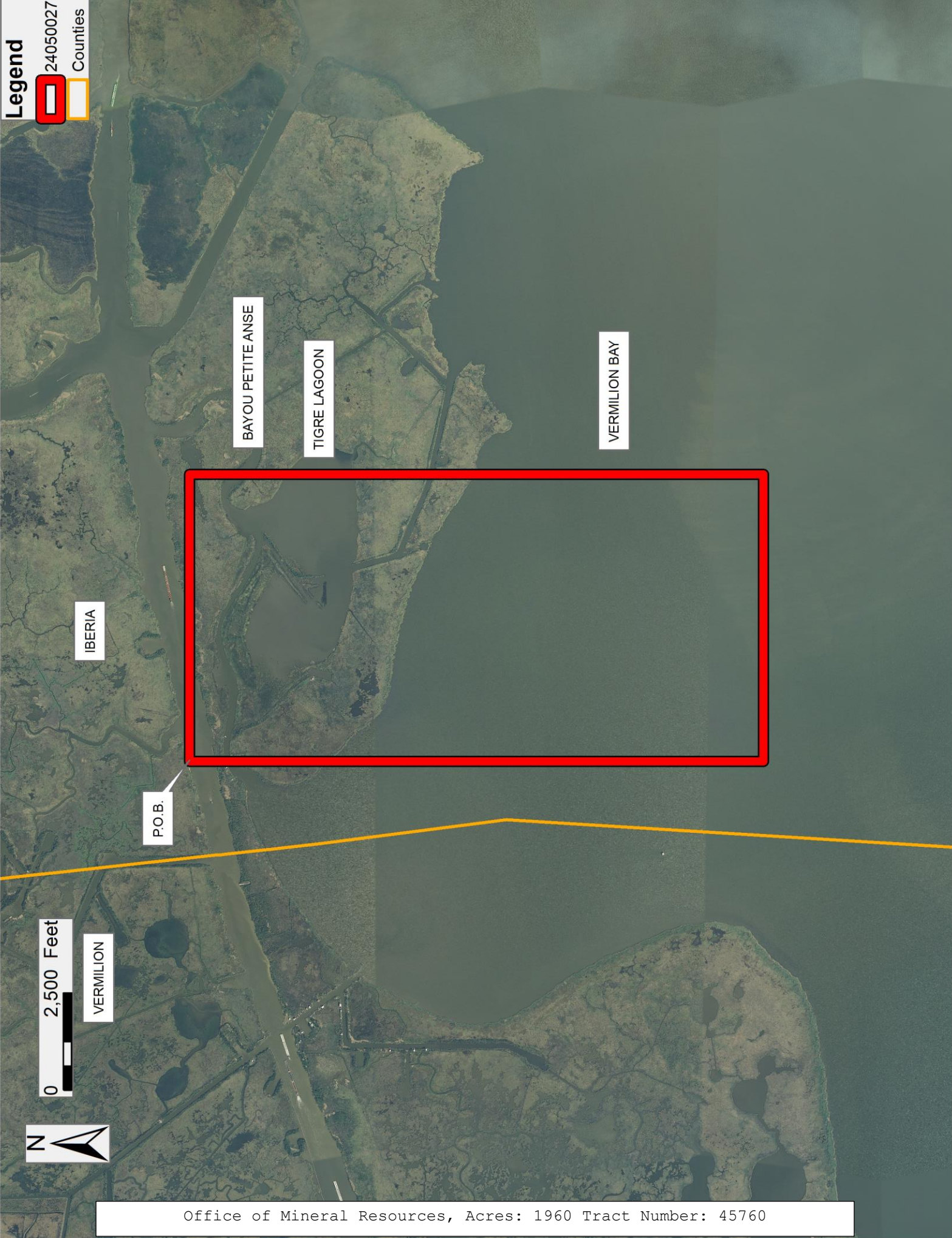
NOTE: The State of Louisiana does hereby reserve, and this lease shall be subject to, the imprescriptible right of surface use in the nature of a servitude in favor of the Department of Natural Resources, including its Offices and Commissions, for the sole purpose of implementing, constructing, servicing and maintaining approved coastal zone management and/or restoration projects. Utilization of any and all rights derived under this lease by the mineral lessee, its agents, successors or assigns, shall not interfere with nor hinder the reasonable surface use by the Department of Natural Resources, its Offices or Commissions, as herein above reserved.

NOTE: This tract is located in an area designated by the Louisiana Legislature or the Wildlife and Fisheries Commission as a Public Oyster Seed Ground, Reservation, or area of Calcasieu or Sabine Lake. Proposed projects occurring in these areas will be evaluated on a case by case basis by Louisiana Department of Wildlife & Fisheries. Modifications to proposed project features including, but not limited to, access routes, well sites, flowlines, and appurtenant structures maybe required by the Louisiana Department of Wildlife and Fisheries. In addition, compensatory mitigation will be required to offset unavoidable habitat impacts.

Applicant: MARK A. O'NEAL & ASSOCIATES, INC.

Bidder	Cash Payment	Price/Acre	Rental	Oil	Gas	Other

Legend



BAYOU PETITE ANSE

TIGRE LAGOON

VERMILION BAY

IBERIA

P.O.B.

VERMILION

0 2,500 Feet



Office of Mineral Resources, Acres: 1960 Tract Number: 45760

**TRACT 45761 - Iberia Parish, Louisiana**

All of the lands now or formerly constituting the beds and bottoms of all water bodies of every nature and description as to which title is vested in the State of Louisiana, together with all islands arising therein and other lands formed by accretion or by reliction, where allowed by law, excepting tax adjudicated lands, and not presently under mineral lease on May 8, 2024, situated in Iberia Parish, Louisiana, and more particularly described as follows: Beginning at a point having Coordinates of X = 1,807,135.18 and Y = 426,902.21; thence East 7,379.00 feet to a point having Coordinates of X = 1,814,514.18 and Y = 426,902.21; thence South 14,758.00 feet to a point having Coordinates of X = 1,814,514.18 and Y = 412,144.21; thence West 7,379.00 feet to a point having Coordinates of X = 1,807,135.18 and Y = 412,144.21; thence North 14,758.00 feet to the point of beginning, containing approximately **1,408 acres**, all as more particularly outlined on a plat on file in the Office of Mineral Resources, Department of Natural Resources. All bearings, distances and coordinates are based on Louisiana Coordinate System of 1927, (North or South Zone), where applicable.

NOTE: The above description of the Tract nominated for lease has been provided and corrected, where required, exclusively by the nomination party. Any mineral lease selected from this Tract and awarded by the Louisiana State Mineral and Energy Board shall be without warranty of any kind, either express, implied, or statutory, including, but not limited to, the implied warranties of merchantability and fitness for a particular purpose. Should the mineral lease awarded by the Louisiana State Mineral and Energy Board be subsequently modified, cancelled or abrogated due to the existence of conflicting leases, operating agreements, private claims or other future obligations or conditions which may affect all or any portion of the leased Tract, it shall not relieve the Lessee of the obligation to pay any bonus due thereon to the Louisiana State Mineral and Energy Board, nor shall the Louisiana State Mineral and Energy Board be obligated to refund any consideration paid by the Lessor prior to such modification, cancellation, or abrogation, including, but not limited to, bonuses, rentals and royalties.

NOTE: The State of Louisiana does hereby reserve, and this lease shall be subject to, the imprescriptible right of surface use in the nature of a servitude in favor of the Department of Natural Resources, including its Offices and Commissions, for the sole purpose of implementing, constructing, servicing and maintaining approved coastal zone management and/or restoration projects. Utilization of any and all rights derived under this lease by the mineral lessee, its agents, successors or assigns, shall not interfere with nor hinder the reasonable surface use by the Department of Natural Resources, its Offices or Commissions, as herein above reserved.

NOTE: This tract is located in an area designated by the Louisiana Legislature or the Wildlife and Fisheries Commission as a Public Oyster Seed Ground, Reservation, or area of Calcasieu or Sabine Lake. Proposed projects occurring in these areas will be evaluated on a case by case basis by Louisiana Department of Wildlife & Fisheries. Modifications to proposed

project features including, but not limited to, access routes, well sites, flowlines, and appurtenant structures maybe required by the Louisiana Department of Wildlife and Fisheries. In addition, compensatory mitigation will be required to offset unavoidable habitat impacts.

Applicant: MARK A. O'NEAL & ASSOCIATES, INC.

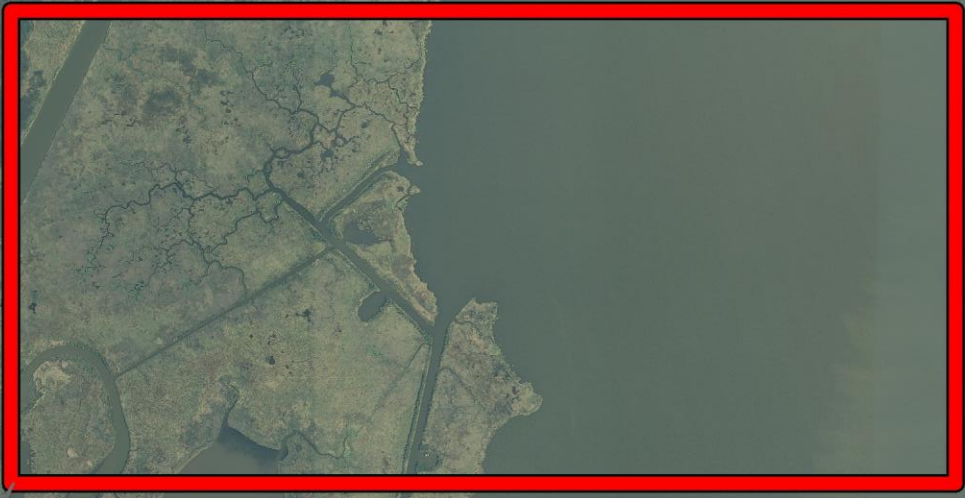
Bidder	Cash Payment	Price/Acre	Rental	Oil	Gas	Other

Legend



VERMILION BAY

IBERIA



P.O.B.

BAYOU PETITE ANSE

TIGRE LAGOON



Office of Mineral Resources, Acres: 1408 Tract Number: 45761

**TRACT 45762 - Iberia Parish, Louisiana**

All of the lands now or formerly constituting the beds and bottoms of all water bodies of every nature and description as to which title is vested in the State of Louisiana, together with all islands arising therein and other lands formed by accretion or by reliction, where allowed by law, excepting tax adjudicated lands, and not presently under mineral lease on May 8, 2024, situated in Iberia Parish, Louisiana, and more particularly described as follows: Beginning at a point having Coordinates of X = 1,814,514.18 and Y = 426,902.21; thence East 7,379.00 feet to a point having Coordinates of X = 1,821,893.18 and Y = 426,902.21; thence South 14,758.00 feet to a point having Coordinates of X = 1,821,893.18 and Y = 412,144.21; thence West 7,379.00 feet to a point having Coordinates of X = 1,814,514.18 and Y = 412,144.21; thence North 14,758.00 feet to the point of beginning, containing approximately **1,823 acres**, all as more particularly outlined on a plat on file in the Office of Mineral Resources, Department of Natural Resources. All bearings, distances and coordinates are based on Louisiana Coordinate System of 1927, (North or South Zone), where applicable.

NOTE: The above description of the Tract nominated for lease has been provided and corrected, where required, exclusively by the nomination party. Any mineral lease selected from this Tract and awarded by the Louisiana State Mineral and Energy Board shall be without warranty of any kind, either express, implied, or statutory, including, but not limited to, the implied warranties of merchantability and fitness for a particular purpose. Should the mineral lease awarded by the Louisiana State Mineral and Energy Board be subsequently modified, cancelled or abrogated due to the existence of conflicting leases, operating agreements, private claims or other future obligations or conditions which may affect all or any portion of the leased Tract, it shall not relieve the Lessee of the obligation to pay any bonus due thereon to the Louisiana State Mineral and Energy Board, nor shall the Louisiana State Mineral and Energy Board be obligated to refund any consideration paid by the Lessor prior to such modification, cancellation, or abrogation, including, but not limited to, bonuses, rentals and royalties.

NOTE: The State of Louisiana does hereby reserve, and this lease shall be subject to, the imprescriptible right of surface use in the nature of a servitude in favor of the Department of Natural Resources, including its Offices and Commissions, for the sole purpose of implementing, constructing, servicing and maintaining approved coastal zone management and/or restoration projects. Utilization of any and all rights derived under this lease by the mineral lessee, its agents, successors or assigns, shall not interfere with nor hinder the reasonable surface use by the Department of Natural Resources, its Offices or Commissions, as herein above reserved.

NOTE: This tract is located in an area designated by the Louisiana Legislature or the Wildlife and Fisheries Commission as a Public Oyster Seed Ground, Reservation, or area of Calcasieu or Sabine Lake. Proposed projects occurring in these areas will be evaluated on a case by case basis by Louisiana Department of Wildlife & Fisheries. Modifications to proposed

project features including, but not limited to, access routes, well sites, flowlines, and appurtenant structures maybe required by the Louisiana Department of Wildlife and Fisheries. In addition, compensatory mitigation will be required to offset unavoidable habitat impacts.

Applicant: MARK A. O'NEAL & ASSOCIATES, INC.

Bidder	Cash Payment	Price/Acre	Rental	Oil	Gas	Other



Legend

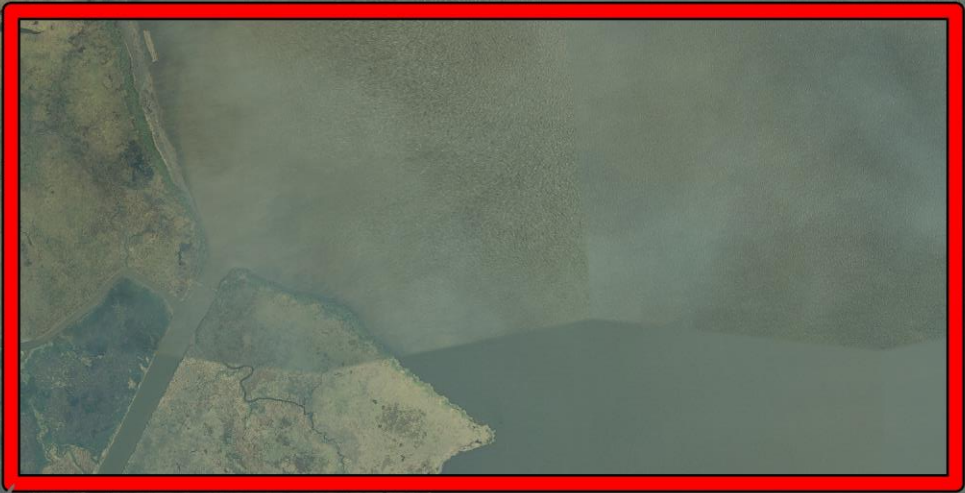


24050029

IBERIA

VERMILION BAY

P.O.B.



0 2,500 Feet

Office of Mineral Resources, Acres: 1823 Tract Number: 45762

**TRACT 45763 - Iberia Parish, Louisiana**

All of the lands now or formerly constituting the beds and bottoms of all water bodies of every nature and description as to which title is vested in the State of Louisiana, together with all islands arising therein and other lands formed by accretion or by reliction, where allowed by law, excepting tax adjudicated lands, and not presently under mineral lease on May 8, 2024, situated in Iberia Parish, Louisiana, and more particularly described as follows: Beginning at a point having Coordinates of X = 1,821,893.18 and Y = 426,902.21; thence East 7,379.00 feet to a point having Coordinates of X = 1,829,272.18 and Y = 426,902.21; thence South 14,758.00 feet to a point having Coordinates of X = 1,829,272.18 and Y = 412,144.21; thence West 7,379.00 feet to a point having Coordinates of X = 1,821,893.18 and Y = 412,144.21; thence North 14,758.00 feet to the point of beginning, containing approximately **2,213 acres**, all as more particularly outlined on a plat on file in the Office of Mineral Resources, Department of Natural Resources. All bearings, distances and coordinates are based on Louisiana Coordinate System of 1927, (North or South Zone), where applicable.

NOTE: The above description of the Tract nominated for lease has been provided and corrected, where required, exclusively by the nomination party. Any mineral lease selected from this Tract and awarded by the Louisiana State Mineral and Energy Board shall be without warranty of any kind, either express, implied, or statutory, including, but not limited to, the implied warranties of merchantability and fitness for a particular purpose. Should the mineral lease awarded by the Louisiana State Mineral and Energy Board be subsequently modified, cancelled or abrogated due to the existence of conflicting leases, operating agreements, private claims or other future obligations or conditions which may affect all or any portion of the leased Tract, it shall not relieve the Lessee of the obligation to pay any bonus due thereon to the Louisiana State Mineral and Energy Board, nor shall the Louisiana State Mineral and Energy Board be obligated to refund any consideration paid by the Lessor prior to such modification, cancellation, or abrogation, including, but not limited to, bonuses, rentals and royalties.

NOTE: The State of Louisiana does hereby reserve, and this lease shall be subject to, the imprescriptible right of surface use in the nature of a servitude in favor of the Department of Natural Resources, including its Offices and Commissions, for the sole purpose of implementing, constructing, servicing and maintaining approved coastal zone management and/or restoration projects. Utilization of any and all rights derived under this lease by the mineral lessee, its agents, successors or assigns, shall not interfere with nor hinder the reasonable surface use by the Department of Natural Resources, its Offices or Commissions, as herein above reserved.

NOTE: This tract is located in an area designated by the Louisiana Legislature or the Wildlife and Fisheries Commission as a Public Oyster Seed Ground, Reservation, or area of Calcasieu or Sabine Lake. Proposed projects occurring in these areas will be evaluated on a case by case basis by Louisiana Department of Wildlife & Fisheries. Modifications to proposed

project features including, but not limited to, access routes, well sites, flowlines, and appurtenant structures maybe required by the Louisiana Department of Wildlife and Fisheries. In addition, compensatory mitigation will be required to offset unavoidable habitat impacts.

Applicant: MARK A. O'NEAL & ASSOCIATES, INC.

Bidder	Cash Payment	Price/Acre	Rental	Oil	Gas	Other

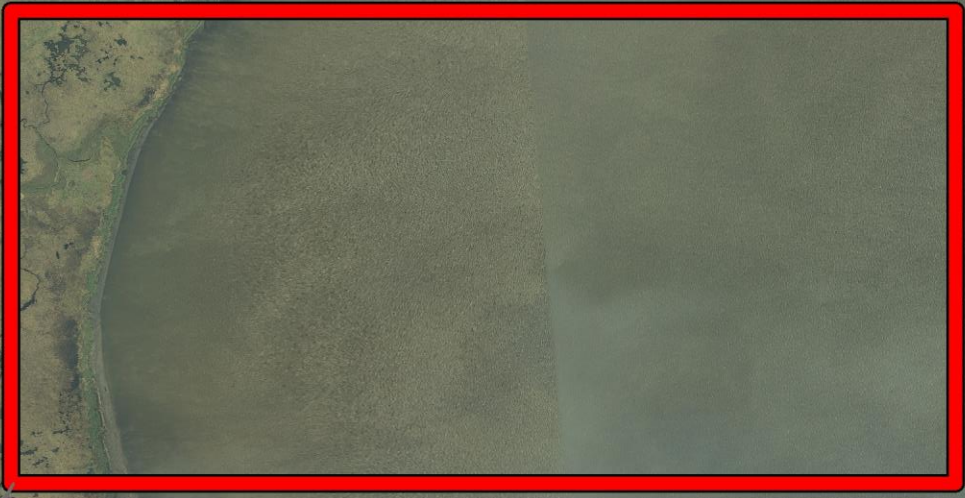


0 2,500 Feet 

IBERIA

P.O.B. 

VERMILION BAY



**TRACT 45764 - Iberia and Vermilion Parishes, Louisiana**

All of the lands now or formerly constituting the beds and bottoms of all water bodies of every nature and description as to which title is vested in the State of Louisiana, together with all islands arising therein and other lands formed by accretion or by reliction, where allowed by law, excepting tax adjudicated lands, and not presently under mineral lease on May 8, 2024, situated in Iberia and Vermilion Parishes, Louisiana, and more particularly described as follows: Beginning at a point having Coordinates of X = 1,792,377.18 and Y = 426,902.21; thence East 7,379.00 feet to a point having Coordinates of X = 1,799,756.18 and Y = 426,902.21; thence South 14,758.00 feet to a point having Coordinates of X = 1,799,756.18 and Y = 412,144.21; thence West 7,379.00 feet to a point having Coordinates of X = 1,792,377.18 and Y = 412,144.21; thence North 14,758.00 feet to the point of beginning, **LESS AND EXCEPT** any right, title, and interest in lands owned by and not under lease from the State of Louisiana, on behalf of the Iberia and Vermilion Parish School Boards, situated in Section 16, Township 14 South, Range 5 East, Iberia and Vermilion Parishes, Louisiana, contained within the above described tract, containing approximately **1,523 acres**, all as more particularly outlined on a plat on file in the Office of Mineral Resources, Department of Natural Resources. All bearings, distances and coordinates are based on Louisiana Coordinate System of 1927, (North or South Zone), where applicable.

NOTE: The above description of the Tract nominated for lease has been provided and corrected, where required, exclusively by the nomination party. Any mineral lease selected from this Tract and awarded by the Louisiana State Mineral and Energy Board shall be without warranty of any kind, either express, implied, or statutory, including, but not limited to, the implied warranties of merchantability and fitness for a particular purpose. Should the mineral lease awarded by the Louisiana State Mineral and Energy Board be subsequently modified, cancelled or abrogated due to the existence of conflicting leases, operating agreements, private claims or other future obligations or conditions which may affect all or any portion of the leased Tract, it shall not relieve the Lessee of the obligation to pay any bonus due thereon to the Louisiana State Mineral and Energy Board, nor shall the Louisiana State Mineral and Energy Board be obligated to refund any consideration paid by the Lessor prior to such modification, cancellation, or abrogation, including, but not limited to, bonuses, rentals and royalties.

NOTE: The State of Louisiana does hereby reserve, and this lease shall be subject to, the imprescriptible right of surface use in the nature of a servitude in favor of the Department of Natural Resources, including its Offices and Commissions, for the sole purpose of implementing, constructing, servicing and maintaining approved coastal zone management and/or restoration projects. Utilization of any and all rights derived under this lease by the mineral lessee, its agents, successors or assigns, shall not interfere with nor hinder the reasonable surface use by the Department of Natural Resources, its Offices or Commissions, as herein above reserved.

NOTE: This tract is located in an area designated by the Louisiana Legislature or the Wildlife and Fisheries Commission as a Public Oyster Seed Ground, Reservation, or area of Calcasieu or Sabine Lake. Proposed projects occurring in these areas will be evaluated on a case by case basis by Louisiana Department of Wildlife & Fisheries. Modifications to proposed project features including, but not limited to, access routes, well sites, flowlines, and appurtenant structures maybe required by the Louisiana Department of Wildlife and Fisheries. In addition, compensatory mitigation will be required to offset unavoidable habitat impacts.

Applicant: MARK A. O'NEAL & ASSOCIATES, INC.

Bidder	Cash Payment	Price/Acre	Rental	Oil	Gas	Other

Legend

24050026

Counties



IBERIA

VERMILION

P.O.B.

VERMILION BAY

T14S - R4E

0 2,500 Feet



Office of Mineral Resources, Acres: 1523 Tract Number: 45764

**TRACT 45765 - Jefferson and Plaquemines Parishes, Louisiana**

All of the lands now or formerly constituting the beds and bottoms of all water bodies of every nature and description as to which title is vested in the State of Louisiana, together with all islands arising therein and other lands formed by accretion or by reliction, where allowed by law, excepting tax adjudicated lands, and not presently under mineral lease on May 8, 2024, situated in Jefferson and Plaquemines Parishes, Louisiana, and more particularly described as follows: Beginning at a point having Coordinates of X = 2,438,000.00 and Y = 306,601.93; thence South 10,401.93 feet to a point having Coordinates of X = 2,438,000.00 and Y = 296,200.00; thence West 6,873.76 feet to a point on East line of State Lease No. 22128 having Coordinates of X = 2,431,126.24 and Y = 296,200.00; thence North 01 degrees 01 minutes 27 seconds West 1,633.63 feet along the East line of said State Lease No. 22128 to a point on the boundary of State Lease No. 22049 having Coordinates of X = 2,431,097.04 and Y = 297,833.37; thence along the boundary of said State Lease No. 22049 the following courses: North 53 degrees 21 minutes 40 seconds East 662.95 feet to a point having Coordinates of X = 2,431,629.00 and Y = 298,229.00; North 59 degrees 47 minutes 03 seconds West 2,036.72 feet to a point having Coordinates of X = 2,429,869.00 and Y = 299,254.00; and South 50 degrees 39 minutes 37 seconds West 146.43 feet to a point on the Eastern boundary of State Lease No. 21345 having Coordinates of X = 2,429,755.75 and Y = 299,161.18; thence along the boundary of said State Lease No. 21345 the following courses: North 01 degrees 02 minutes 04 seconds West 1,089.59 feet to its Northeast corner having Coordinates of X = 2,429,736.08 and Y = 300,250.59, and South 89 degrees 06 minutes 56 seconds West 2,659.70 feet to the Southeast corner of Operating Agreement No. A0331 having Coordinates of X = 2,427,076.70 and Y = 300,209.54; thence North 1,090.76 feet along the East line of said Operating Agreement No. A0331 to its most Easterly Northeast corner, said corner being the Southeast corner of Operating Agreement No. A0321, Tract 2, having Coordinates of X = 2,427,076.70 and Y = 301,300.30; thence North 01 degrees 02 minutes 35 seconds West 1,428.94 feet along the East line of said Operating Agreement No. A0321, Tract 2, to its Northeast corner having Coordinates of X = 2,427,050.69 and Y = 302,729.00; thence North 01 degrees 00 minutes 09 seconds West 1,695.72 feet to the Southwest corner of State Lease No. 19949, as amended, having Coordinate of X = 2,427,021.02 and Y = 304,424.46; thence along the boundary of said State Lease No. 19949, as amended, the following courses: North 88 degrees 59 minutes 23 seconds East 1,269.18 feet to its Southeast corner having Coordinates of X = 2,428,290.00 and Y = 304,446.84 and North 2,155.09 feet to its Northeast corner having Coordinates of X = 2,428,290.00 and Y = 306,601.93; thence East 9,710.00 feet to the point of beginning, (This lease includes only waterbottoms claimed and owned by the state and specifically excludes any land which the state may claim or own and to which the mineral rights are vested in the state), containing approximately **1,450 acres**, all as more particularly outlined on a plat on file in the Office of Mineral Resources, Department of Natural Resources. All bearings, distances and coordinates are based on Louisiana Coordinate System of 1927, (North or South Zone), where applicable.



NOTE: The above description of the Tract nominated for lease has been provided and corrected, where required, exclusively by the nomination party. Any mineral lease selected from this Tract and awarded by the Louisiana State Mineral and Energy Board shall be without warranty of any kind, either express, implied, or statutory, including, but not limited to, the implied warranties of merchantability and fitness for a particular purpose. Should the mineral lease awarded by the Louisiana State Mineral and Energy Board be subsequently modified, cancelled or abrogated due to the existence of conflicting leases, operating agreements, private claims or other future obligations or conditions which may affect all or any portion of the leased Tract, it shall not relieve the Lessee of the obligation to pay any bonus due thereon to the Louisiana State Mineral and Energy Board, nor shall the Louisiana State Mineral and Energy Board be obligated to refund any consideration paid by the Lessor prior to such modification, cancellation, or abrogation, including, but not limited to, bonuses, rentals and royalties.

NOTE: The State of Louisiana does hereby reserve, and this lease shall be subject to, the imprescriptible right of surface use in the nature of a servitude in favor of the Department of Natural Resources, including its Offices and Commissions, for the sole purpose of implementing, constructing, servicing and maintaining approved coastal zone management and/or restoration projects. Utilization of any and all rights derived under this lease by the mineral lessee, its agents, successors or assigns, shall not interfere with nor hinder the reasonable surface use by the Department of Natural Resources, its Offices or Commissions, as herein above reserved.

Applicant: PRIDE OIL & GAS PROPERTIES

Bidder	Cash Payment	Price/Acre	Rental	Oil	Gas	Other



0 2,000 Feet

JEFFERSON

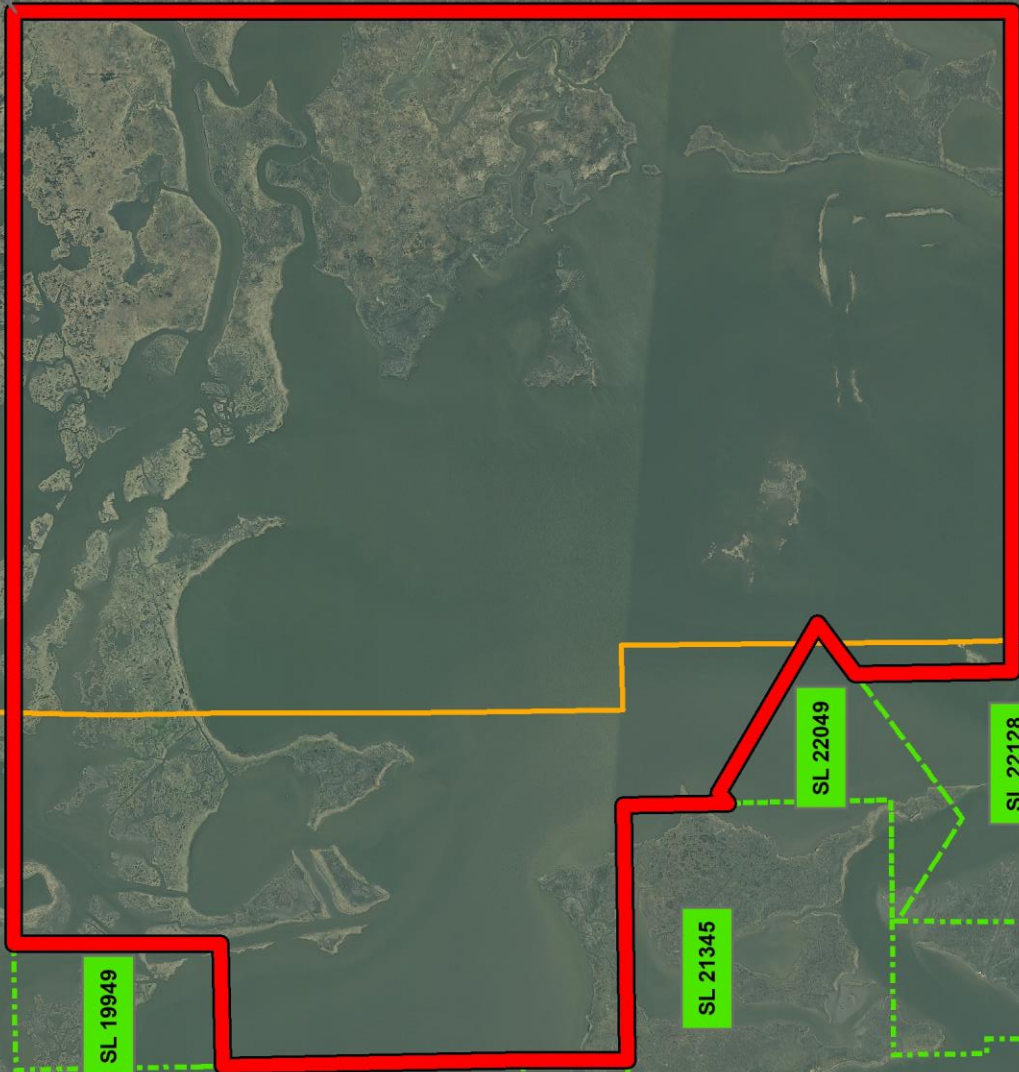
PLAQUEMINES

P.O.B.

BAYOU DUPONT

**Legend**

- 24050047
- Active\_Leases
- Counties



Office of Mineral Resources, Acres: 1450 Tract Number: 45765

**TRACT 45766 - Jefferson and Plaquemines Parishes, Louisiana**

All of the lands now or formerly constituting the beds and bottoms of all water bodies of every nature and description as to which title is vested in the State of Louisiana, together with all islands arising therein and other lands formed by accretion or by reliction, where allowed by law, excepting tax adjudicated lands, and not presently under mineral lease on May 8, 2024, situated in Jefferson and Plaquemines Parishes, Louisiana, and more particularly described as follows: Beginning at a point having Coordinates of X = 2,435,200.00 and Y = 284,500.00; thence West 10,700.00 feet to a point having Coordinates of X = 2,424,500.00 and Y = 284,500.00; thence North 7,623.91 feet to a point on the South line of State Lease No. 21649 having Coordinates of X = 2,424,500.00 and Y = 292,123.91; thence along the boundary of said State Lease No. 21649 the following courses: North 86 degrees 43 minutes 59 seconds East 3,121.62 feet to a point having Coordinates of X = 2,427,616.55 and Y = 292,301.81 and North 1,527.13 feet to its Northeast corner, said corner being the Southeast corner of State Lease No. 21651, having Coordinates of X = 2,427,616.55 and Y = 293,828.94; thence North 1,635.03 feet along the East line of said State Lease No. 21651 to the Southwest corner of State Lease No. 22048 having Coordinates of X = 2,427,616.55 and Y = 295,463.97; thence North 89 degrees 48 minutes 28 seconds East 903.46 feet along the South line of said State Lease No. 22048 to its Southeast corner, said corner being the Southwest corner of State Lease No. 22128, having Coordinates of X = 2,428,520.00 and Y = 295,467.00; thence along the boundary of said State Lease No. 22128 the following courses: North 89 degrees 48 minutes 28 seconds East 2,619.20 feet to its Southeast corner having Coordinates of X = 2,431,139.18 and Y = 295,475.79 and North 01 degrees 01 minutes 27 seconds West 724.33 feet to a point having Coordinates of X = 2,431,126.24 and Y = 296,200.00; thence East 4,073.76 feet to a point having Coordinates of X = 2,435,200.00 and Y = 296,200.00; thence South 11,700.00 feet to the point of beginning, (This lease includes only waterbottoms claimed and owned by the state and specifically excludes any land which the state may claim or own and to which the mineral rights are vested in the state), containing approximately **1,859 acres**, all as more particularly outlined on a plat on file in the Office of Mineral Resources, Department of Natural Resources. All bearings, distances and coordinates are based on Louisiana Coordinate System of 1927, (North or South Zone), where applicable.

NOTE: The above description of the Tract nominated for lease has been provided and corrected, where required, exclusively by the nomination party. Any mineral lease selected from this Tract and awarded by the Louisiana State Mineral and Energy Board shall be without warranty of any kind, either express, implied, or statutory, including, but not limited to, the implied warranties of merchantability and fitness for a particular purpose. Should the mineral lease awarded by the Louisiana State Mineral and Energy Board be subsequently modified, cancelled or abrogated due to the existence of conflicting leases, operating agreements, private claims or other future obligations or conditions which may affect all or any portion of the leased Tract, it shall not relieve the Lessee of the obligation to pay any bonus

due thereon to the Louisiana State Mineral and Energy Board, nor shall the Louisiana State Mineral and Energy Board be obligated to refund any consideration paid by the Lessor prior to such modification, cancellation, or abrogation, including, but not limited to, bonuses, rentals and royalties.

NOTE: The State of Louisiana does hereby reserve, and this lease shall be subject to, the imprescriptible right of surface use in the nature of a servitude in favor of the Department of Natural Resources, including its Offices and Commissions, for the sole purpose of implementing, constructing, servicing and maintaining approved coastal zone management and/or restoration projects. Utilization of any and all rights derived under this lease by the mineral lessee, its agents, successors or assigns, shall not interfere with nor hinder the reasonable surface use by the Department of Natural Resources, its Offices or Commissions, as herein above reserved.

Applicant: PRIDE OIL & GAS PROPERTIES, INC.

Bidder	Cash Payment	Price/Acre	Rental	Oil	Gas	Other

**Legend**



24050048

Active\_Leases

0 2,000 Feet



P.O.B.

SL 22128

SL 22048

SL 22651

SL 21649

BAYOU ST DENIS

MUD LAKE

T19S - R24E

BARATARIA BAY

HACKBERRY BAY

**TRACT 45767 - Iberia Parish, Louisiana**

All State owned lands, including high and marsh lands and islands, and the beds and bottoms of all non-navigable water bodies located landward of the mean high water line of the sea and/or arm of the sea surrounding Marsh Island and embraced within the lands donated to the State of Louisiana by the Russell Sage Foundation in November of 1920, and lands now or formerly constituting the beds and bottoms of all navigable water bodies of every nature and description located within the boundaries of the Russell Sage or Marsh Island Wildlife Refuge and Game Preserve not under mineral lease on May 8, 2024 situated in Iberia Parish, Louisiana, and more fully described as follows: Beginning at a point within Marsh Island Wildlife Refuge and Game Preserve having Coordinates of X = 1,848,516.22 and Y = 302,134.00; thence East approximately 11,768 feet to a point on the boundary of said Marsh Island Wildlife Refuge and Game Preserve having a Coordinate of Y = 302,134.00; thence Southeasterly and Southwesterly along the meanders of said Marsh Island Wildlife Refuge and Game Preserve to the point of intersection with a North South line having a Coordinate of X = 1,848,516.22; thence North approximately 4,446 feet to the point of beginning, containing approximately **1,271 acres**, all as more particularly outlined on a plat on file in the Office of Mineral Resources, Department of Natural Resources. All bearings, distances and coordinates are based on Louisiana Coordinate System of 1927, (North or South Zone), where applicable.

NOTE: The above description of the Tract nominated for lease has been provided and corrected, where required, exclusively by the nomination party. Any mineral lease selected from this Tract and awarded by the Louisiana State Mineral and Energy Board shall be without warranty of any kind, either express, implied, or statutory, including, but not limited to, the implied warranties of merchantability and fitness for a particular purpose. Should the mineral lease awarded by the Louisiana State Mineral and Energy Board be subsequently modified, cancelled or abrogated due to the existence of conflicting leases, operating agreements, private claims or other future obligations or conditions which may affect all or any portion of the leased Tract, it shall not relieve the Lessee of the obligation to pay any bonus due thereon to the Louisiana State Mineral and Energy Board, nor shall the Louisiana State Mineral and Energy Board be obligated to refund any consideration paid by the Lessor prior to such modification, cancellation, or abrogation, including, but not limited to, bonuses, rentals and royalties.

NOTE: Pursuant to R.S. 56:798A one-half of any and all payments due under the Lease as royalty, rentals, or otherwise are payable to the Russell Sage Foundation and the other half of such payments due are payable to the State. The Lease shall be subject to the terms of this notice and as provided by R.S. 56:798A, such lease is to be for such time or times as may be mutually agreed upon between the Russell Sage Foundation and the State Mineral Board, and under such conditions, rules, and regulations as will, to the satisfaction of the Russell Sage Foundation, afford adequate present and future protection of Marsh Island for the purposes for which it was donated by the Russell Sage Foundation to the state and as will insure a minimum

disturbance of wildlife on the island. The Foundation reserves its right to determine its entry into the said mineral lease agreement until after all bids have been received and reviewed.

NOTE: Compliance with provisions and conditions governing geophysical operations on Marsh Island (conditions 1-15), provisions and conditions governing drilling and production operations on Marsh Island (conditions 1-22) and general provisions governing both geophysical exploration and drilling and production operations on Marsh Island (conditions 1-11) shall be required. The provisions and conditions shall be attached to the mineral lease. The provisions and conditions may be viewed at the following address: <https://www.dnr.louisiana.gov/index.cfm/page/1300>. Contact Mike Perot at (225)765-3978 for information on the provisions and conditions.

NOTE: Additionally, this bid requires a minimum bonus of \$350.00 per acre and a minimum royalty of 25%.

NOTE: The Russell Sage Foundation's half-share of the at least \$350/acre bid price should be wired directly to the Foundation upon the Foundation's acceptance of the bid and thereafter all payments due the Foundation under the Lease shall be payable to the Foundation by wire. Payment information to be provided to the successful bidder by the Foundation's representative:

Tam Bourgeois  
1824 Hood Avenue  
Baton Rouge, La. 70808  
(225)205-6122  
tambourgeois@gmail.com

NOTE: The above described tract may be in the vicinity of existing shell reefs where drilling and dredging operations must be conducted in strict conformity with the regulations adopted by the Louisiana Department of Wildlife and Fisheries and/or the U.S. Corps of Engineers, U.S. Army.

NOTE: The State of Louisiana does hereby reserve, and this lease shall be subject to, the imprescriptible right of surface use in the nature of a servitude in favor of the Department of Natural Resources, including its Offices and Commissions, for the sole purpose of implementing, constructing, servicing and maintaining approved coastal zone management and/or restoration projects. Utilization of any and all rights derived under this lease by the mineral lessee, its agents, successors or assigns, shall not interfere with nor hinder the reasonable surface use by the Department of Natural Resources, its Offices or Commissions, as herein above reserved.

NOTE: This tract is located in an area designated by the Louisiana Legislature or the Wildlife and Fisheries Commission as a Public Oyster Seed Ground, Reservation, or area of Calcasieu or Sabine Lake. Proposed projects occurring in these areas will be evaluated on a case by case basis by Louisiana Department of Wildlife & Fisheries. Modifications to proposed project features including, but not limited to, access routes, well sites,

flowlines, and appurtenant structures maybe required by the Louisiana Department of Wildlife and Fisheries. In addition, compensatory mitigation will be required to offset unavoidable habitat impacts.

NOTE: All or a portion of this Tract lies within one nautical mile of the boundary of the Russell Sage or Marsh Island Wildlife Refuge and Game Preserve. Any activities connected with this lease conducted within this Tract which may pose potential environmental impacts to the said Wildlife Refuge and Game Preserve should be coordinated with the Louisiana Department of Wildlife and Fisheries.

Applicant: HAROLD J. ANDERSON, INC.

Bidder	Cash Payment	Price/Acre	Rental	Oil	Gas	Other



Legend



Office of Mineral Resources, Acres: 1271 Tract Number: 45767

**TRACT 45768 - Portion of Blocks 2, and 3, Eugene Island Area, Revised, Iberia Parish, Louisiana**

All of the lands now or formerly constituting the beds and bottoms of all water bodies of every nature and description as to which title is vested in the State of Louisiana, together with all islands arising therein and other lands formed by accretion or by reliction, where allowed by law, excepting tax adjudicated lands, and not presently under mineral lease on May 8, 2024, situated in Iberia Parish, Louisiana, and more particularly described as follows: Beginning at a point having Coordinates of X = 1,869,387.22 and Y = 302,134.00; thence South 10,435.53 feet to a point having Coordinates of X = 1,869,387.22 and Y = 291,698.47; thence West 10,435.50 feet to a point having Coordinates of X = 1,858,951.72 and Y = 291,698.47; thence North approximately 6,318 feet to a point on boundary of the Marsh Island Wildlife Refuge having a Coordinate of X = 1,858,951.72; thence Northeasterly and Northwesterly along the meanders of said Marsh Island Wildlife Refuge to a point of intersection with an East West line having a Coordinate of Y = 302,134.00; thence East approximately 9,103 feet to the point of beginning, containing approximately **2,313 acres**, all as more particularly outlined on a plat on file in the Office of Mineral Resources, Department of Natural Resources. All bearings, distances and coordinates are based on Louisiana Coordinate System of 1927, (North or South Zone), where applicable.

NOTE: The above description of the Tract nominated for lease has been provided and corrected, where required, exclusively by the nomination party. Any mineral lease selected from this Tract and awarded by the Louisiana State Mineral and Energy Board shall be without warranty of any kind, either express, implied, or statutory, including, but not limited to, the implied warranties of merchantability and fitness for a particular purpose. Should the mineral lease awarded by the Louisiana State Mineral and Energy Board be subsequently modified, cancelled or abrogated due to the existence of conflicting leases, operating agreements, private claims or other future obligations or conditions which may affect all or any portion of the leased Tract, it shall not relieve the Lessee of the obligation to pay any bonus due thereon to the Louisiana State Mineral and Energy Board, nor shall the Louisiana State Mineral and Energy Board be obligated to refund any consideration paid by the Lessor prior to such modification, cancellation, or abrogation, including, but not limited to, bonuses, rentals and royalties.

NOTE: The above described tract may be in the vicinity of existing shell reefs where drilling and dredging operations must be conducted in strict conformity with the regulations adopted by the Louisiana Department of Wildlife and Fisheries and/or the U.S. Corps of Engineers, U.S. Army.

NOTE: The State of Louisiana does hereby reserve, and this lease shall be subject to, the imprescriptible right of surface use in the nature of a servitude in favor of the Department of Natural Resources, including its Offices and Commissions, for the sole purpose of implementing, constructing, servicing and maintaining approved coastal zone management and/or restoration projects. Utilization of any and all rights derived under this

lease by the mineral lessee, its agents, successors or assigns, shall not interfere with nor hinder the reasonable surface use by the Department of Natural Resources, its Offices or Commissions, as herein above reserved.

NOTE: This tract is located in an area designated by the Louisiana Legislature or the Wildlife and Fisheries Commission as a Public Oyster Seed Ground, Reservation, or area of Calcasieu or Sabine Lake. Proposed projects occurring in these areas will be evaluated on a case by case basis by Louisiana Department of Wildlife & Fisheries. Modifications to proposed project features including, but not limited to, access routes, well sites, flowlines, and appurtenant structures maybe required by the Louisiana Department of Wildlife and Fisheries. In addition, compensatory mitigation will be required to offset unavoidable habitat impacts.

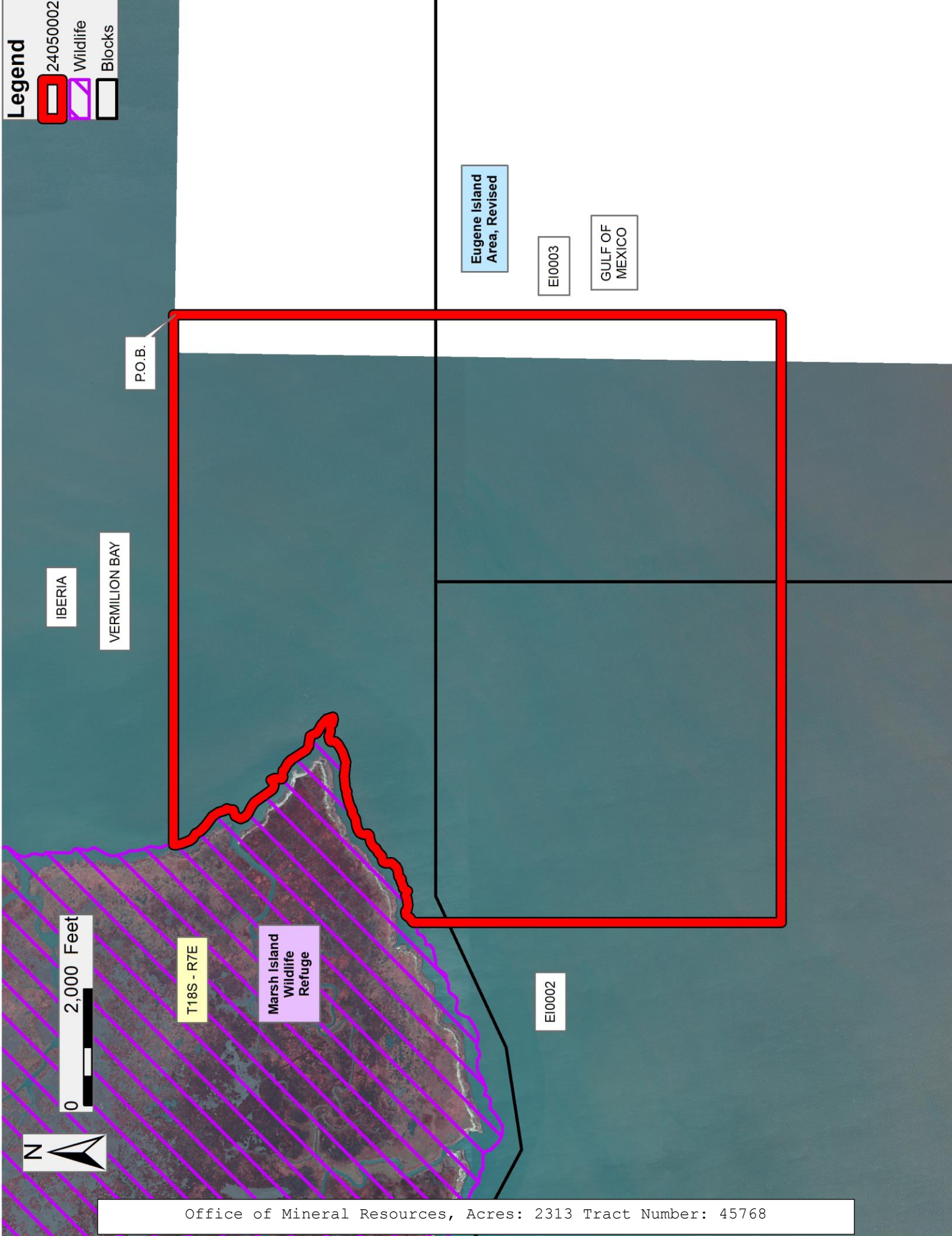
NOTE: All or a portion of this Tract lies within one nautical mile of the boundary of the Russell Sage or Marsh Island Wildlife Refuge and Game Preserve. Any activities connected with this lease conducted within this Tract which may pose potential environmental impacts to the said Wildlife Refuge and Game Preserve should be coordinated with the Louisiana Department of Wildlife and Fisheries.

Applicant: HAROLD J. ANDERSON, INC.

Bidder	Cash Payment	Price/Acre	Rental	Oil	Gas	Other

**Legend**

- 24050002
- Wildlife
- Blocks



IBERIA

VERMILION BAY

P.O.B.

Eugene Island Area, Revised

EI0003

GULF OF MEXICO

0 2,000 Feet

T18S - R7E

Marsh Island Wildlife Refuge

EI0002

Office of Mineral Resources, Acres: 2313 Tract Number: 45768

**TRACT 45769 - Portion of Block 3, Eugene Island Area, Revised, Iberia Parish, Louisiana**

All of the lands now or formerly constituting the beds and bottoms of all water bodies of every nature and description as to which title is vested in the State of Louisiana, together with all islands arising therein and other lands formed by accretion or by reliction, where allowed by law, excepting tax adjudicated lands, and not presently under mineral lease on May 8, 2024, situated in Iberia Parish, Louisiana, and more particularly described as follows: Beginning at a point having Coordinates of X = 1,879,822.72 and Y = 302,134.00; thence South 10,435.53 feet to a point having Coordinates of X = 1,879,822.72 and Y = 291,698.47; thence West 10,435.50 feet to a point having Coordinates of X = 1,869,387.22 and Y = 291,698.47; thence North 10,435.53 feet to a point having Coordinates of X = 1,869,387.22 and Y = 302,134.00; thence East 10,435.50 feet to the point of beginning, containing approximately **2,500.00 acres**, all as more particularly outlined on a plat on file in the Office of Mineral Resources, Department of Natural Resources. All bearings, distances and coordinates are based on Louisiana Coordinate System of 1927, (North or South Zone), where applicable.

NOTE: The above description of the Tract nominated for lease has been provided and corrected, where required, exclusively by the nomination party. Any mineral lease selected from this Tract and awarded by the Louisiana State Mineral and Energy Board shall be without warranty of any kind, either express, implied, or statutory, including, but not limited to, the implied warranties of merchantability and fitness for a particular purpose. Should the mineral lease awarded by the Louisiana State Mineral and Energy Board be subsequently modified, cancelled or abrogated due to the existence of conflicting leases, operating agreements, private claims or other future obligations or conditions which may affect all or any portion of the leased Tract, it shall not relieve the Lessee of the obligation to pay any bonus due thereon to the Louisiana State Mineral and Energy Board, nor shall the Louisiana State Mineral and Energy Board be obligated to refund any consideration paid by the Lessor prior to such modification, cancellation, or abrogation, including, but not limited to, bonuses, rentals and royalties.

NOTE: The above described tract may be in the vicinity of existing shell reefs where drilling and dredging operations must be conducted in strict conformity with the regulations adopted by the Louisiana Department of Wildlife and Fisheries and/or the U.S. Corps of Engineers, U.S. Army.

NOTE: The State of Louisiana does hereby reserve, and this lease shall be subject to, the imprescriptible right of surface use in the nature of a servitude in favor of the Department of Natural Resources, including its Offices and Commissions, for the sole purpose of implementing, constructing, servicing and maintaining approved coastal zone management and/or restoration projects. Utilization of any and all rights derived under this lease by the mineral lessee, its agents, successors or assigns, shall not interfere with nor hinder the reasonable surface use by the Department of Natural Resources, its Offices or Commissions, as herein above reserved.

NOTE: This tract is located in an area designated by the Louisiana Legislature or the Wildlife and Fisheries Commission as a Public Oyster Seed Ground, Reservation, or area of Calcasieu or Sabine Lake. Proposed projects occurring in these areas will be evaluated on a case by case basis by Louisiana Department of Wildlife & Fisheries. Modifications to proposed project features including, but not limited to, access routes, well sites, flowlines, and appurtenant structures maybe required by the Louisiana Department of Wildlife and Fisheries. In addition, compensatory mitigation will be required to offset unavoidable habitat impacts.

Applicant: HAROLD J. ANDERSON, INC.

Bidder	Cash Payment	Price/Acre	Rental	Oil	Gas	Other

**Legend**  
24050003  
Blocks

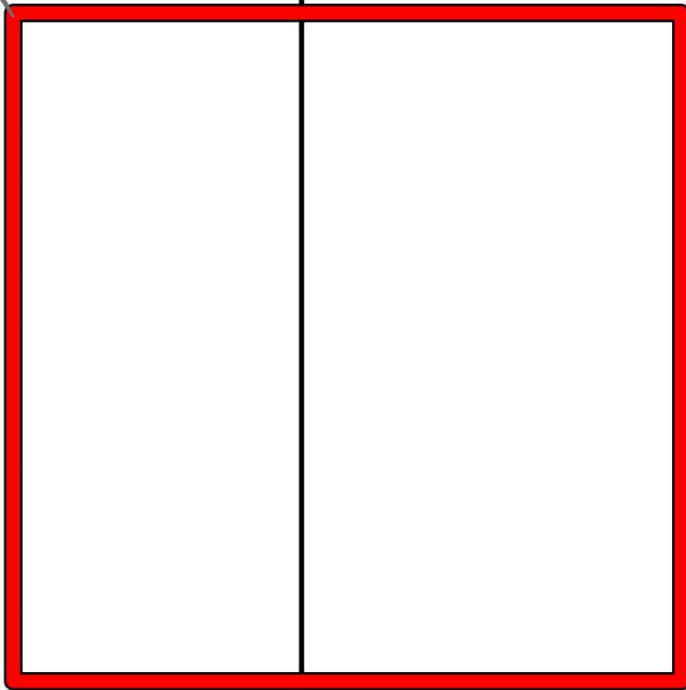


0 2,500 Feet

IBERIA

VERMILION BAY

P.O.B.



E10004

E10003

GULF OF MEXICO

**Eugene Island Area, Revised**