

LOUISIANA ENERGY FACTS

Louisiana Department of Natural Resources
Technology Assessment Division

www.dnr.louisiana.gov/tad

INSIDE

Highlights
page 1

**Louisiana Crude Oil and
Condensate Production**
page 1

Current Oil & Gas Data
page 2

**Louisiana Crude Oil and
Condensate Production**
page 3

**Louisiana Natural Gas
and Casinghead Gas
Production**
page 3

Quick Facts
page 4

**Featured Articles
and Inserts**
[Natural Gas Vehicles
in Louisiana](#)



Department of Natural Resources
Scott A. Angelle, Secretary

Technology Assessment Division
Christopher P. Knotts, P.E.,
Director
Manuel Lam, Senior Analyst

617 North Third Street
Baton Rouge, LA 70802

Tel. (225) 342-1270
Fax. (225) 242-1397
Email: techasmt@la.gov
www.dnr.louisiana.gov/tad

Highlights

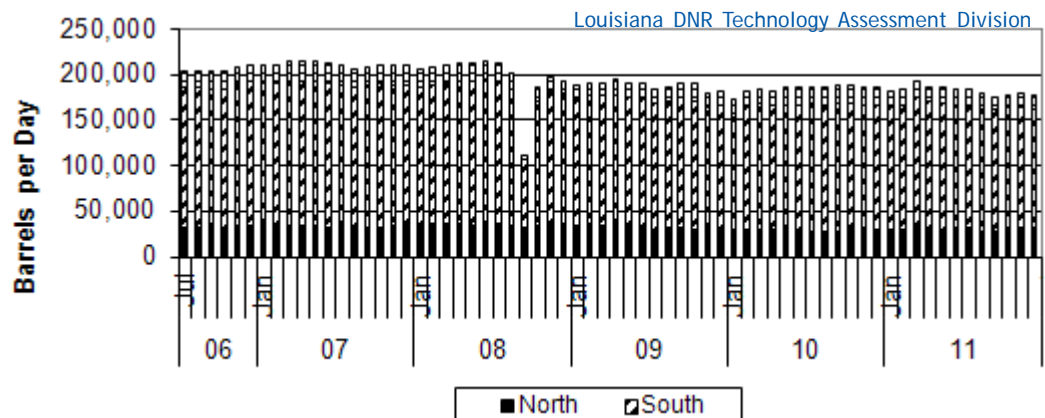
JANUARY 2012

Average drilling rig counts in Louisiana are falling. There were 149 active rigs in December 2011, which is 26 fewer (or 15% lower) than December 2010. However, the drop occurs only in the Haynesville Shale region located in North Louisiana, and is attributed to the low natural gas prices. The Haynesville region shows a 42% drop in rig count for December 2011 (70 rigs) compared to December 2010 (122 rigs). South Louisiana showed a 33% increase in December 2011 (42 rigs) from December 2010 (31 rigs). The offshore area (including the federal offshore) showed an 85% increase for December 2011 (37 rigs) from December 2010 (20 rigs).

Louisiana Crude Oil and Condensate Production**, Excluding Federal OCS

Month	(Barrels/Day)						% Change 10/11
	2006	2007	2008	2009	2010	2011	
January	191,403	211,396	206,298	189,499 ²	174,235 ²	183,721 ²	5.44%
February	194,063	211,535	209,586	192,354 ²	181,718 ²	184,138 ²	1.33%
March	199,617	216,410	211,533	192,133 ²	184,878 ²	193,924 ²	4.89%
April	198,347	215,932	213,405	195,491 ²	183,610 ²	187,770 ²	2.27%
May	200,882	216,029	213,290	192,248 ²	186,390 ²	187,906 ²	0.81%
June	204,915	213,197	215,113	191,109 ²	187,560 ²	185,065 ²	-1.33%
July	205,772	210,657	214,380	185,973 ²	187,885 ²	184,454	-1.83%
August	205,340	206,806	203,592	187,880 ²	188,012 ²	181,348	-3.54%
September	204,234	208,868	113,195	192,136 ²	190,278 ²	176,906	-7.03%
October	204,031	211,505	186,122	191,091 ²	189,075 ²	179,279	-5.18%
November	210,242	210,975	199,042	181,348 ²	186,341 ²	180,433 ¹	-3.17%
December	212,452	211,340	194,450	183,900 ²	186,297 ²	178,803 ¹	-4.02%
Year Average	202,608	212,054	198,334	189,597²	185,523²	183,645¹	-1.01%

**All data are revised; see July 2001 statistic changes explanation



Current Oil & Gas Data

Louisiana DNR Technology Assessment Division

PRODUCTION	JUL 11	JUN 11	MAY 11	JUL 10
LOUISIANA FEDERAL OFFSHORE (OCS)				
Crude Oil & Condensate ^C (MMB)	N/A	33 ¹	38 ¹	40 ¹
Natural Gas & Casinghead ^C (BCF)	N/A	101 ¹	117 ¹	126 ¹
THE UNITED STATES TOTAL				
Crude Oil & Condensate ^C (MMB)	174	169	174	164 ²
Natural Gas & Casinghead ^C (BCF)	1,952	1,888	1,953	1,810 ²
IMPORTS				
U.S. Crude Oil ^C (MMB)	288	277	279	308 ²
U.S. Natural Gas ^C (BCF)	282	265	271	329 ²
BAKER HUGHES RIG COUNTS				
U.S. Gas ^A	880	877 ²	878	971
U.S. Oil ^A	1,014	979 ²	948	591
U.S. Offshore ^A	35	34	32	15
U.S. Total ^A	1,900	1,863	1,836	1,573
PRICES				
CRUDE OIL (\$/barrel)				
OPEC Average ^C (F.O.B.)	110.09	108.22	108.50	72.16
U.S. Imports Average ^C (F.O.B.)	105.60	104.35	105.92	71.01
U.S. Wellhead Average ^C	97.82	97.30	102.46	71.37
Gulf OCS Wellhead Average ^C	109.55	109.49 ²	115.05	74.51
State Severance Wellhead Average ^E	109.80	115.55	111.57	72.81
NATURAL GAS (\$/MCF)				
U.S. City Gates Average ^C	6.14	6.07	5.79	6.30 ²
U.S. Imports Average ^C (F.O.B.)	4.39	4.61	4.32	4.40
U.S. Wellhead Average ^C	4.27	4.19	4.12	4.36
State Royalty Wellhead Average	4.58	4.73	4.54 ²	4.88 ²
NYMEX Henry Hub End of the Month Settle Gas Price ^B (\$/MMBTU)	4.36	4.33	4.38	4.72

Key

Data Sources

1	Estimated	MCF	Thousand Cubic Feet	A	Oil & Gas Journal	D	Natural Gas Week
2	Revised	MMB	Million Barrels	B	Wall Street Journal	E	LA Dept of Revenue
BCF	Billion Cubic Feet	N/A	Not Available	C	U. S. Dept. of Energy		
BTU	British Thermal Unit	OCS	Outer Continental Shelf				
FO.B.	Free on Board	MMBTU	Million British Thermal Units				
				Note: Unless otherwise specified, data is from the Louisiana Department of Natural Resources and excludes Federal OCS.			

Note from the Editors

Louisiana Energy Facts is published monthly by the Louisiana Department of Natural Resources, Technology Assessment Division as a public service to individuals interested in Louisiana energy activities. Content includes recent oil, gas and other energy statistics and a brief analysis of current trends.

Louisiana Energy Facts articles provide insight and information on subjects of special interest to our readers, and may announce relevant, forthcoming publications.

These documents are available on the Louisiana Department of Natural Resources, Technology Assessment Division home page: <http://www.dnr.louisiana.gov/tad>. From the menu, select **Newsletters**. Our current online holdings include issues dating from 1998 through the present. If the issue you are seeking is unavailable, please contact us.

To request a subscription or update your mailing address, contact us with your information. Please specify print or electronic subscription. We value your feedback. Please send your comments and suggestions for improving and enhancing the newsletter to: techasmt@la.gov.

Louisiana Crude Oil and Condensate Production

Excluding Federal OCS

Louisiana DNR Technology Assessment Division

YEAR	(Barrels)			
	NORTH	SOUTH	OFFSHORE	TOTAL
1992	25,702,774	93,681,430	23,421,660	142,805,864
1993	23,736,207	90,934,698	23,222,361	137,893,266
1994	20,963,310	83,505,726	22,660,992	127,130,028
1995	20,571,849	82,339,060	22,318,475	125,229,384
1996	22,063,110	85,465,942	21,430,471	128,959,522
1997	21,497,315	84,706,090	19,951,782	126,155,187
1998	19,570,475	85,190,830	17,520,419	122,281,725
1999	16,459,365	80,068,828	14,331,807	110,860,000
2000	15,411,033	78,303,428	13,471,159	107,185,619
2001	14,274,475	79,328,486	11,264,058	104,867,019
2002	12,726,261	71,523,765	9,440,089	93,690,115
2003	12,049,211	67,975,624	10,349,488	90,374,323
2004	11,696,648	63,270,406	8,725,050	83,692,104
2005	11,909,370	56,993,657	6,782,960	75,685,987
2006	12,101,998	55,150,979	6,717,312	73,970,289
2007	12,428,707	57,380,373	7,591,511	77,400,591
2008	13,106,830	53,229,244	6,282,009	72,618,083 ²
2009	12,092,849 ²	51,109,980 ²	5,990,027 ²	69,192,856 ²
2010	11,016,213 ²	50,118,335 ²	6,587,209 ²	67,721,757 ²
2011	11,440,722 ¹	49,579,816 ¹	6,012,987 ¹	67,033,524 ¹

Louisiana Natural Gas and Casinghead Gas Production

Excluding Federal OCS

Louisiana DNR Technology Assessment Division

YEAR	(MCF)			
	NORTH	SOUTH	OFFSHORE	TOTAL
1992	373,437,705	1,165,124,656	114,004,309	1,652,566,670
1993	360,295,273	1,137,556,453	124,042,317	1,621,894,043
1994	354,864,587	1,068,937,383	128,395,752	1,552,197,722
1995	367,215,091	1,046,891,492	136,506,278	1,550,612,861
1996	415,280,446	1,064,407,257	159,500,151	1,639,187,854
1997	441,844,087	1,008,319,013	160,956,517	1,611,119,617
1998	429,257,932	1,008,712,261	144,320,869	1,582,291,062
1999	385,479,720	957,381,530	115,829,899	1,458,691,149
2000	381,407,678	978,585,376	107,546,713	1,467,539,767
2001	390,842,072	993,269,323	111,210,322	1,495,321,717
2002	387,069,536	876,556,069	98,236,172	1,361,861,777
2003	416,488,328	844,709,436	83,413,309	1,344,611,073
2004	475,425,191	806,165,872	68,134,157	1,349,725,220
2005	537,869,897	693,599,008	53,486,449	1,284,955,354
2006	571,821,698	710,814,721	67,273,962	1,349,910,381
2007	611,476,442	672,290,544	71,412,494	1,355,179,480
2008	684,957,736	591,030,610	83,935,486	1,359,923,832
2009	961,039,416 ²	492,214,810 ²	74,866,725 ²	1,528,120,951 ²
2010	1,696,938,674 ²	410,819,286 ²	68,356,066 ²	2,176,114,026 ²
2011	2,363,612,706 ¹	392,431,372 ¹	68,221,843 ¹	2,824,265,922 ¹

This issue of *Louisiana Energy Facts* is funded 100% (\$745) with Petroleum Violation Escrow funds as part of the State Energy Program as approved by the U.S. Department of Energy and Department of Natural Resources. This public document was published at a total cost of \$745. 995 copies of this public document were published in this first printing at a total cost of \$745. The total cost of all printing of this document, including reprints, is \$745. This document was published by the Department of Natural Resources, P.O. Box 94396, Baton Rouge, LA 70804-9396 to promulgate the State Energy Program developed under authority of P.L. 94-163. This material was printed in accordance with the standards for printing by State agencies established pursuant to R.S. 43.31.



LOUISIANA DEPARTMENT OF NATURAL RESOURCES
Technology Assessment Division
 P. O. Box 94396
 Baton Rouge, LA 70804-9396

PRST STD
 U.S. POSTAGE
PAID
 BATON ROUGE, LA
 PERMIT NO. 936

ADDRESS SERVICE REQUESTED

INSIDE

Highlights
page 1

**Louisiana Crude Oil
and Condensate
Production**
page 1

Current Oil & Gas Data
page 2

**Louisiana Crude Oil
and Condensate
Production**
page 3

**Louisiana Natural Gas
and Casinghead Gas
Production**
page 3

Quick Facts
page 4

**Featured Articles
and Inserts**
Natural Gas Vehicles
in Louisiana

Quick Facts

JANUARY 2012

Louisiana DNR Technology Assessment Division

SPOT MARKET PRICES

	Dec 11	Nov 11	Dec 10
Louisiana Natural Gas ^D (\$/MMBTU)	3.20	3.21	4.22
NYMEX Henry Hub Last Settle Gas Price ^B (\$/MMBTU)	3.36	3.52 ²	4.27
Louisiana Sweet Crude - St. James ^B (\$/Barrel)	108.62	111.33	94.31

BAKER HUGHES RIG COUNTS

	Nov 11	Oct 11	Nov 10
North Louisiana ^A	83	84	127
South Louisiana Inland Waters ^A	19	17	16
South Louisiana Inland ^A	24	25	17
Louisiana State Offshore	2	2	2
Louisiana Federal OCS Offshore	30	25	18
Total Louisiana ^A (OCS included)	158	153	180

PRODUCTION (State Jurisdiction Only)

	Nov 11	Oct 11	Nov 10
Louisiana Crude Oil & Condensate (MMB)	5.4 ¹	5.6 ¹	5.6 ²
Louisiana Natural Gas & Casinghead (BCF)	226.2 ¹	226.1 ¹	202.0 ²

DRILLING PERMITS (State Jurisdiction Only)

	Nov 11	Oct 11	Nov 10
Total Louisiana Oil and Gas	128	125	148
Louisiana Wildcats	4	2	8
Louisiana Offshore (Wildcats included)	0	7	3