

LOUISIANA ENERGY FACTS

Louisiana Department of Natural Resources
Technology Assessment Division

www.dnr.louisiana.gov/tad

INSIDE

Highlights
page 1

Louisiana Natural Gas & Casinghead Production
page 1

Current Oil & Gas Data
page 2

Louisiana Mineral Severance Tax Revenue by Source
page 3

Louisiana Mineral Royalty Revenue by Source
page 3

Quick Facts
page 4

Featured Articles and Inserts
[Selected Louisiana Energy Statistics](#)



Department of Natural Resources
Scott A. Angelle, Secretary

Technology Assessment Division
Christopher P. Knotts, P.E.,
Director
Manuel Lam, Senior Analyst

617 North Third Street
Baton Rouge, LA 70802

Tel. (225) 342-1270
Fax. (225) 242-1397
Email: techasmt@la.gov
www.dnr.louisiana.gov/tad

Highlights

AUGUST 2012

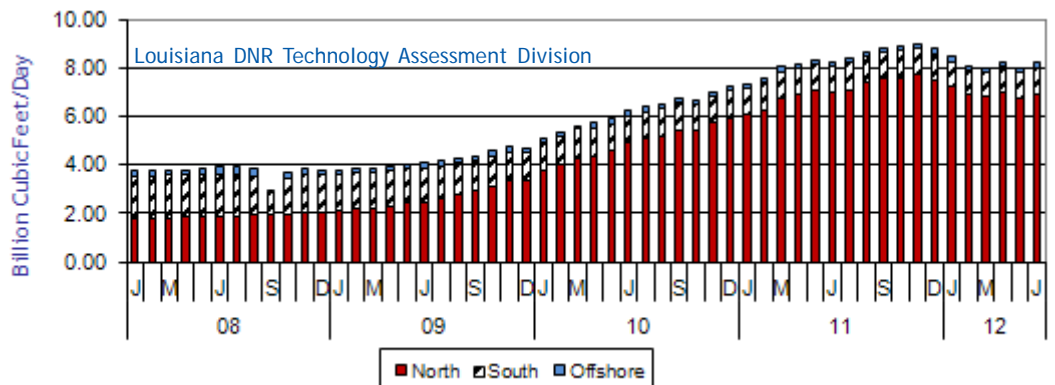
Drilling rig counts in Louisiana Federal OCS areas rebounded to pre-moratorium levels, while the rig counts onshore and in state water areas declined. The decline in the onshore and state water areas is caused by low natural gas prices. High crude oil prices have helped to slow the decline, but it could not be reversed because Louisiana is a gas-producing region. In Louisiana, on average, there are two rigs looking for gas for each rig looking for oil. For the first half of 2012, there was an average of 91 active rigs in Louisiana onshore and in state water areas. This represents a 38% decline from the same period in 2011. In Louisiana Federal OCS areas, however, there was an average of 40 active rigs, which was a 63% increase over the same period in 2011.

Louisiana Natural Gas & Casinghead Production*, Excluding Federal OCS

Month	(Billion Cubic Feet/Day)						% Change	
	2007	2008	2009	2010	2011	2012	10/11	11/12
January	3.64	3.72	3.75	5.08 ²	7.35 ²	8.43		14.73%
February	3.60	3.72 ²	3.85 ²	5.34 ²	7.57 ²	8.08		6.73%
March	3.67	3.74	3.86	5.56 ²	8.03 ²	8.01		-0.35%
April	3.72	3.78	3.96	5.71 ²	8.18 ²	8.24		0.75%
May	3.79	3.86	4.04	5.88 ²	8.32 ²	8.00		-3.81%
June	3.80	3.89	4.05	6.21 ²	8.21 ²	8.19		-0.25%
July	3.79	3.93	4.13	6.38 ²	8.38 ²		31.27%	
August	3.68	3.82	4.29	6.52 ²	8.66 ²		32.66%	
September	3.71	2.90	4.36	6.71 ²	8.81 ²		31.19%	
October	3.71	3.65	4.54	6.68 ²	8.88 ²		32.97%	
November	3.71	3.84	4.71 ²	6.98 ²	8.99 ²		28.88%	
December	3.72	3.73	4.68	7.23 ²	8.79 ²		21.59%	
Year Average	3.71	3.72 ²	4.19 ²	6.19 ²	8.35 ²	8.16 ^{**}		

* All data are revised, see July 2001 statistics changes explanation.

** Partial Year



Current Oil & Gas Data

Louisiana DNR Technology Assessment Division

PRODUCTION	FEB 12	JAN 12	DEC 11	FEB 11
LOUISIANA FEDERAL OFFSHORE (OCS)				
Crude Oil & Condensate ^C (MMB)	33 ¹	35 ¹	34 ¹	36 ¹
Natural Gas & Casinghead ^C (BCF)	95 ¹	105 ¹	106 ¹	116 ¹
THE UNITED STATES TOTAL				
Crude Oil & Condensate ^C (MMB)	178	190	187	152 ²
Natural Gas & Casinghead ^C (BCF)	1,884	2,037	2,031	1,674 ²
IMPORTS				
U.S. Crude Oil ^C (MMB)	248	266 ²	270	224
U.S. Natural Gas ^C (BCF)	270	281	295	308 ²
BAKER HUGHES RIG COUNTS				
U.S. Gas ^A	723	790	812	907
U.S. Oil ^A	1,261	1,208	1,188	801
U.S. Offshore ^A	42	43	42	23 ²
U.S. Total ^A	1,990	2,003	2,005	1,718
PRICES				
CRUDE OIL (\$/barrel)				
OPEC Average ^C (F.O.B.)	113.61	107.37	106.42 ²	96.01
U.S. Imports Average ^C (F.O.B.)	110.47	104.18	103.09 ²	92.07
U.S. Wellhead Average ^C	102.05	98.99	98.71	86.69
Gulf OCS Wellhead Average ^C	108.66	106.09	110.54	91.47
State Severance Wellhead Average ^E	102.83	117.12	102.77	89.51
NATURAL GAS (\$/MCF)				
U.S. City Gates Average ^C	4.75	4.86	5.03	5.75 ²
U.S. Imports Average ^C (F.O.B.)	2.86	3.26	3.66	4.48 ²
U.S. Wellhead Average ^C	2.46	2.89	3.14	4.34 ²
State Royalty Wellhead Average	2.76	3.03	3.44	4.35 ²
NYMEX Henry Hub End of the Month Settle Gas Price ^B (\$/MMBTL)	2.68	3.08	3.36	4.32

Key

Data Sources

1	Estimated	MCF	Thousand Cubic Feet	A	Oil & Gas Journal	D	Natural Gas Week
2	Revised	MMB	Million Barrels	B	Wall Street Journal	E	LA Dept of Revenue
BCF	Billion Cubic Feet	NA	Not Available	C	U. S. Dept. of Energy		
BTU	British Thermal Unit	OCS	Outer Continental Shelf	Note: Unless otherwise specified, data is from the Louisiana Department of Natural Resources and excludes Federal OCS.			
FO.B.	Free on Board	MMBTU	Million British Thermal Units				

Note from the Editors

Louisiana Energy Facts is published monthly by the Louisiana Department of Natural Resources, Technology Assessment Division as a public service to individuals interested in Louisiana energy activities. Content includes recent oil, gas and other energy statistics and a brief analysis of current trends.

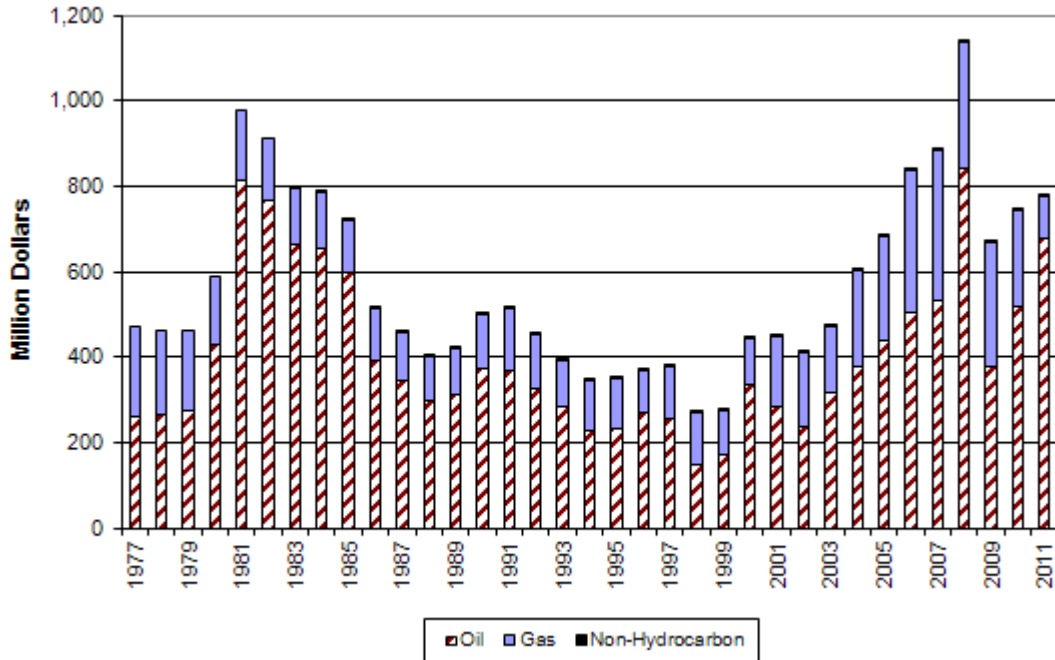
Louisiana Energy Facts articles provide insight and information on subjects of special interest to our readers, and may announce relevant, forthcoming publications.

These documents are available on the Louisiana Department of Natural Resources, Technology Assessment Division home page: <http://www.dnr.louisiana.gov/tad>. From the menu, select **Newsletters**. Our current online holdings include issues dating from 1998 through the present. If the issue you are seeking is unavailable, please contact us.

To request a subscription or update your mailing address, contact us with your information. Please specify print or electronic subscription. **We value your feedback.** Please send your comments and suggestions for improving and enhancing the newsletter to: techasmt@la.gov.

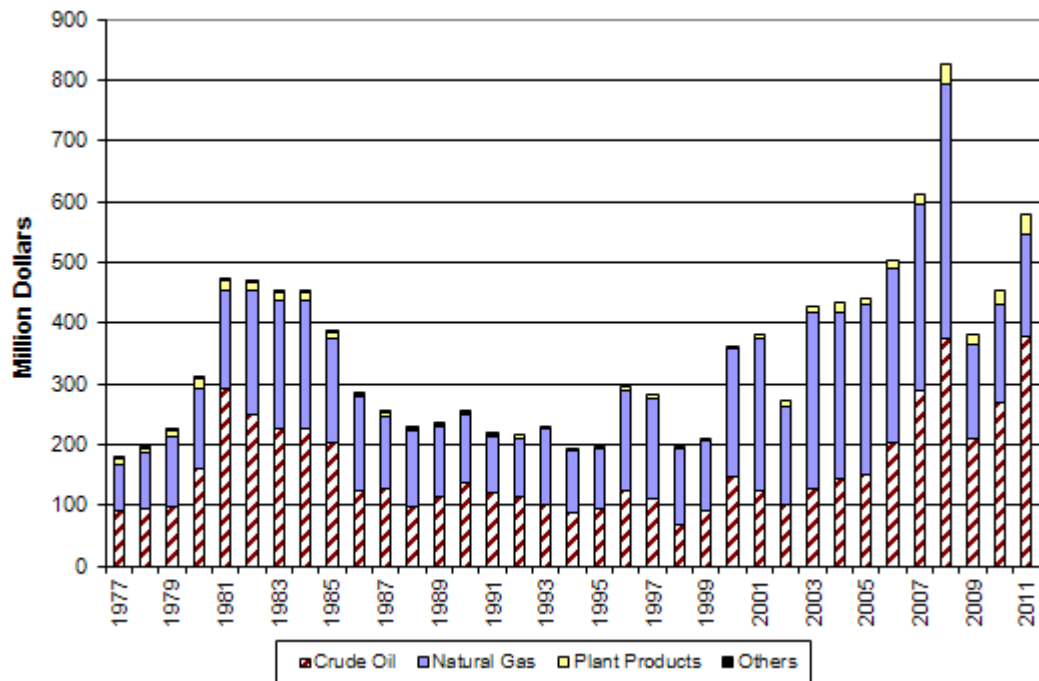
Louisiana Mineral Severance Tax Revenue by Source Excluding Federal OCS

Louisiana DNR Technology Assessment Division



Louisiana Mineral Royalty Revenue by Source, Excluding Federal OCS

Louisiana DNR Technology Assessment Division



This issue of **Louisiana Energy Facts** is funded 100% (\$745) with Petroleum Violation Escrow funds as part of the State Energy Program as approved by the U.S. Department of Energy and Department of Natural Resources. This public document was published at a total cost of \$745. 995 copies of this public document were published in this first printing at a total cost of \$745. The total cost of all printing of this document, including reprints, is \$745. This document was published by the Department of Natural Resources, P.O. Box 94396, Baton Rouge, LA 70804-9396 to promulgate the State Energy Program developed under authority of P.L. 94-163. This material was printed in accordance with the standards for printing by State agencies established pursuant to R.S. 43.31.



LOUISIANA DEPARTMENT OF NATURAL RESOURCES
Technology Assessment Division
 P. O. Box 94396
 Baton Rouge, LA 70804-9396

PRST STD
 U.S. POSTAGE
PAID
 BATON ROUGE, LA
 PERMIT NO. 936

ADDRESS SERVICE REQUESTED

INSIDE

Highlights
 page 1

Louisiana Natural Gas & Casinghead Production
 page 1

Current Oil & Gas Data
 page 2

Louisiana Mineral Severance Tax Revenue by Source
 page 3

Louisiana Mineral Royalty Revenue by Source
 page 3

Quick Facts
 page 4

Featured Articles and Inserts
[Selected Louisiana Energy Statistics](#)

Quick Facts

AUGUST 2012

Louisiana DNR Technology Assessment Division

SPOT MARKET PRICES

	Jul 12	Jun 12	Jul 11
Louisiana Natural Gas ^D (\$/MMBTU)	2.84	2.34 ²	4.34
NYMEX Henry Hub Last Settle Gas Price ^B (\$/MMBTL)	2.77	2.43	4.36
Louisiana Sweet Crude - St. James ^B (\$/Barrel)	103.49	94.90	115.86

BAKER HUGHES RIG COUNTS

	Jun 12	May 12	Jun 11
North Louisiana ^A	31	38	100
South Louisiana Inland Waters ^A	19	20	16
South Louisiana Inland ^A	29	27	22
Louisiana State Offshore	1	0	2
Louisiana Federal OCS Offshore	45	43	31
Total Louisiana ^A (OCS included)	125	128	171

PRODUCTION (State Jurisdiction Only)

	Jun 12	May 12	Jun 11
Louisiana Crude Oil & Condensate (MMB)	5.7 ¹	5.7 ¹	5.5 ¹
Louisiana Natural Gas & Casinghead (BCF)	245.6 ¹	248.1 ¹	215.1 ¹

DRILLING PERMITS (State Jurisdiction Only)

	Jun 12	May 12	Jun 11
Total Louisiana Oil and Gas	150	152	159
Louisiana Wildcats	4	5	4
Louisiana Offshore (Wildcats included)	1	3	1