

LOUISIANA ENERGY FACTS

Louisiana Department of Natural Resources
Technology Assessment Division

www.dnr.louisiana.gov/tad

INSIDE

Highlights
page 1

**Louisiana Crude Oil and
Condensate Production**
page 1

Current Oil & Gas Data
page 2

**Louisiana Crude Oil and
Condensate Production**
page 3

**Louisiana Natural Gas and
Casinghead Gas
Production**
page 3

Quick Facts
page 4

**Featured Articles
and Inserts**
[Results of the Empower
Louisiana Transportation
Efficiency and Alternative
Fuels Grant Program](#)



Department of Natural Resources
Stephen Chutz,
Interim Secretary

Technology Assessment Division
William J. Delmar, Jr., P.E.
Interim Director
Manuel Lam, Senior Analyst

617 North Third Street
Baton Rouge, LA 70802

Tel. (225) 342-1270
Fax. (225) 242-1397
Email: techasmt@la.gov
www.dnr.louisiana.gov/tad

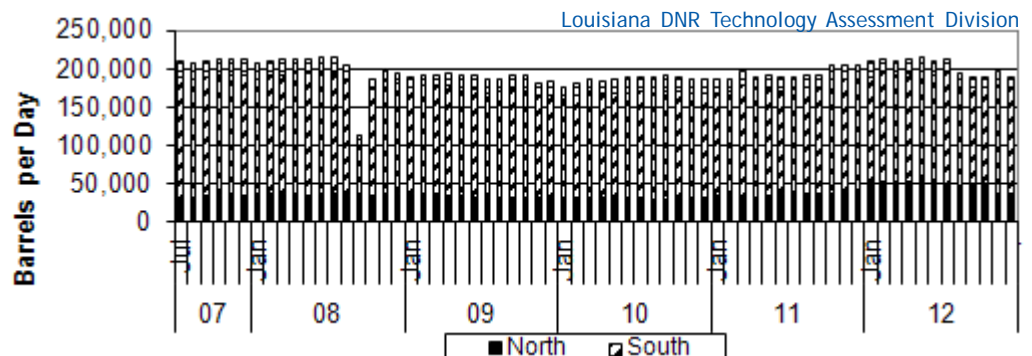
Highlights JANUARY 2013

Drilling activities are decreasing in Louisiana. Looking at late December data, the average rig count was 175 in 2010, 149 rigs in 2011, and by 2012, the count numbered 108 rigs. The drilling activities drop occurred only in the Louisiana North District, mainly in the Haynesville Shale region. In 2010, there was an average of 122 rigs active, but by 2012, it had dropped to 22 rigs. The drop was caused by low natural gas prices, fulfilled leasing requirements, and shifting drilling plans for U.S. Shale plays from dry gas toward areas rich with natural gas liquids. The South District had an average of 31 drilling rigs in 2010, with an increase to 40 drilling rigs by 2012 due to high oil prices. The Louisiana offshore, including federal OCS, also increased its averaged 21 rigs in 2010, and by 2012, there were 47 rigs due to recovery from the Drilling Moratorium.

Louisiana Crude Oil and Condensate Production**, Excluding Federal OCS

| Month | (Barrels/Day) | | | | | | % Change 11/12 |
|---------------------|----------------|----------------|----------------|----------------|----------------|----------------|-------------------|
| | 2007 | 2008 | 2009 | 2010 | 2011 | 2012 | |
| January | 211,794 | 206,114 | 189,456 | 174,251 | 183,722 | 192,920 | 5.01% |
| February | 212,188 | 209,564 | 192,347 | 181,629 | 184,067 | 196,523 | 6.77% |
| March | 216,658 | 211,493 | 191,269 | 184,878 | 193,524 | 192,646 | -0.45% |
| April | 216,025 | 213,326 | 194,654 | 183,483 | 187,350 | 194,845 | 4.00% |
| May | 216,034 | 213,230 | 191,486 | 186,393 | 187,609 | 198,028 | 5.55% |
| June | 212,671 | 215,080 | 190,416 | 186,890 | 184,899 | 193,778 | 4.80% |
| July | 210,120 | 214,293 | 185,216 | 187,258 | 184,437 | 191,971 | 4.08% |
| August | 206,169 | 203,559 | 187,161 | 187,301 | 187,844 | 192,710 | 2.59% |
| September | 208,273 | 113,171 | 191,385 | 190,218 | 185,902 | 197,895 | 6.45% |
| October | 210,797 | 186,093 | 190,377 | 188,633 | 198,578 | 191,392 | -3.62% |
| November | 211,021 | 198,994 | 180,751 | 185,887 | 199,645 | 195,680 | -1.99% |
| December | 211,400 | 194,408 | 183,418 | 185,910 | 198,779 | 189,030 | -4.90% |
| Year Average | 211,929 | 198,277 | 188,995 | 185,227 | 189,696 | 193,952 | 2.24% |

**All data are revised; see July 2001 statistic changes explanation



Current Oil & Gas Data

Louisiana DNR Technology Assessment Division

| PRODUCTION | JUL 12 | JUN 12 | MAY 12 | JUL 11 |
|---|--------|-------------------|-------------------|--------------------|
| LOUISIANA FEDERAL OFFSHORE (OCS) | | | | |
| Crude Oil & Condensate ^C (MMB) | 38 | 28 ¹ | 32 ¹ | 34 |
| Natural Gas & Casinghead ^C (BCF) | 92 | 83 ¹ | 90 ¹ | 109 |
| THE UNITED STATES TOTAL | | | | |
| Crude Oil & Condensate ^C (MMB) | 195 | 185 | 193 | 168 ² |
| Natural Gas & Casinghead ^C (BCF) | 2,034 | 1,960 | 2,033 | 1,944 ² |
| IMPORTS | | | | |
| U.S. Crude Oil ^C (MMB) | 267 | 273 | 276 | 288 ² |
| U.S. Natural Gas ^C (BCF) | 257 | 258 | 257 | 293 ² |
| BAKER HUGHES RIG COUNTS | | | | |
| U.S. Gas ^A | 522 | 558 | 600 | 880 |
| U.S. Oil ^A | 1,419 | 1,409 | 1,373 | 1,014 |
| U.S. Offshore ^A | 51 | 49 | 46 | 35 |
| U.S. Total ^A | 1,944 | 1,972 | 1,977 | 1,900 |
| PRICES | | | | |
| CRUDE OIL (\$/barrel) | | | | |
| OPEC Average ^C (F.O.B.) | 95.88 | 90.63 | 105.28 | 110.09 |
| U.S. Imports Average ^C (F.O.B.) | 92.80 | 88.00 | 100.79 | 105.60 |
| U.S. Wellhead Average ^C | 86.15 | 83.59 | 95.57 | 97.82 |
| Gulf OCS Wellhead Average ^C | 93.59 | 101.19 | 113.78 | 109.55 |
| State Severance Wellhead Average ^E | 108.84 | 119.04 | 120.26 | 109.80 |
| NATURAL GAS (\$/MCF) | | | | |
| U.S. City Gates Average ^C | 4.86 | 4.65 | 4.31 | 6.15 ² |
| U.S. Imports Average ^C (F.O.B.) | 2.77 | 2.35 | 2.28 | 4.39 |
| U.S. Wellhead Average ^C | 2.59 | 2.54 | 1.94 | 4.27 |
| State Royalty Wellhead Average | 2.91 | 2.48 ² | 2.39 ² | 4.62 ² |
| NYMEX Henry Hub End of the Month Settle Gas Price ^B (\$/MMBTU) | 2.77 | 2.43 | 2.04 | 4.36 |

Key

Data Sources

| | | | | | | | |
|--------------|----------------------|--------------|-------------------------------|---|-----------------------|----------|--------------------|
| 1 | Estimated | MCF | Thousand Cubic Feet | A | Oil & Gas Journal | D | Natural Gas Week |
| 2 | Revised | MMB | Million Barrels | B | Wall Street Journal | E | LA Dept of Revenue |
| BCF | Billion Cubic Feet | NA | Not Available | C | U. S. Dept. of Energy | | |
| BTU | British Thermal Unit | OCS | Outer Continental Shelf | | | | |
| FO.B. | Free on Board | MMBTU | Million British Thermal Units | | | | |
| | | | | Note: Unless otherwise specified, data is from the Louisiana Department of Natural Resources and excludes Federal OCS. | | | |

Note from the Editors

Louisiana Energy Facts is published monthly by the Louisiana Department of Natural Resources, Technology Assessment Division as a public service to individuals interested in Louisiana energy activities. Content includes recent oil, gas and other energy statistics and a brief analysis of current trends.

Louisiana Energy Facts articles provide insight and information on subjects of special interest to our readers, and may announce relevant, forthcoming publications.

These documents are available on the Louisiana Department of Natural Resources, Technology Assessment Division home page: <http://www.dnr.louisiana.gov/tad>. From the menu, select **Newsletters**. Our current online holdings include issues dating from 1998 through the present. If the issue you are seeking is unavailable, please contact us.

To request a subscription or update your mailing address, contact us with your information. Please specify print or electronic subscription. **We value your feedback.** Please send your comments and suggestions for improving and enhancing the newsletter to: techasmt@la.gov.

Louisiana Crude Oil and Condensate Production

Excluding Federal OCS

Louisiana DNR Technology Assessment Division

| YEAR | (Barrels) | | | TOTAL |
|------|-------------------------|-------------------------|------------------------|-------------------------|
| | NORTH | SOUTH | OFFSHORE | |
| 1993 | 23,736,207 | 90,934,698 | 23,222,361 | 137,893,266 |
| 1994 | 20,963,310 | 83,505,726 | 22,660,992 | 127,130,028 |
| 1995 | 20,571,849 | 82,339,060 | 22,318,475 | 125,229,384 |
| 1996 | 22,063,110 | 85,465,942 | 21,430,471 | 128,959,522 |
| 1997 | 21,497,315 | 84,706,090 | 19,951,782 | 126,155,187 |
| 1998 | 19,570,475 | 85,190,830 | 17,520,419 | 122,281,725 |
| 1999 | 16,459,365 | 80,068,828 | 14,331,807 | 110,860,000 |
| 2000 | 15,411,033 | 78,303,428 | 13,471,159 | 107,185,619 |
| 2001 | 14,274,475 | 79,328,486 | 11,264,058 | 104,867,019 |
| 2002 | 12,726,261 | 71,523,765 | 9,440,089 | 93,690,115 |
| 2003 | 12,049,211 | 67,975,624 | 10,349,488 | 90,374,323 |
| 2004 | 11,696,648 | 63,270,406 | 8,725,050 | 83,692,104 |
| 2005 | 11,909,370 | 56,993,657 | 6,782,960 | 75,685,987 |
| 2006 | 12,100,880 ² | 55,151,918 ² | 6,717,319 ² | 73,970,117 ² |
| 2007 | 12,427,647 ² | 57,353,465 ² | 7,595,386 ² | 77,376,498 ² |
| 2008 | 13,103,021 ² | 53,214,294 ² | 6,282,040 ² | 72,599,355 ² |
| 2009 | 12,090,493 ² | 50,891,104 ² | 5,990,170 ² | 68,971,767 ² |
| 2010 | 11,247,399 ² | 50,012,721 ² | 6,587,244 ² | 67,847,364 ² |
| 2011 | 13,172,423 ² | 50,910,224 ² | 6,482,501 ² | 70,565,148 ² |
| 2012 | 17,466,499 ¹ | 50,065,172 ¹ | 6,536,041 ¹ | 74,067,712 ¹ |

Louisiana Natural Gas and Casinghead Gas Production

Excluding Federal OCS

Louisiana DNR Technology Assessment Division

| YEAR | (MCF) | | | TOTAL |
|------|----------------------------|--------------------------|-------------------------|----------------------------|
| | NORTH | SOUTH | OFFSHORE | |
| 1993 | 360,295,273 | 1,137,556,453 | 124,042,317 | 1,621,894,043 |
| 1994 | 354,864,587 | 1,068,937,383 | 128,395,752 | 1,552,197,722 |
| 1995 | 367,215,091 | 1,046,891,492 | 136,506,278 | 1,550,612,861 |
| 1996 | 415,280,446 | 1,064,407,257 | 159,500,151 | 1,639,187,854 |
| 1997 | 441,844,087 | 1,008,319,013 | 160,956,517 | 1,611,119,617 |
| 1998 | 429,257,932 | 1,008,712,261 | 144,320,869 | 1,582,291,062 |
| 1999 | 385,479,720 | 957,381,530 | 115,829,899 | 1,458,691,149 |
| 2000 | 381,407,678 | 978,585,376 | 107,546,713 | 1,467,539,767 |
| 2001 | 390,842,072 | 993,269,323 | 111,210,322 | 1,495,321,717 |
| 2002 | 387,069,536 | 876,556,069 | 98,236,172 | 1,361,861,777 |
| 2003 | 416,488,328 | 844,709,436 | 83,413,309 | 1,344,611,073 |
| 2004 | 475,425,191 | 806,165,872 | 68,134,157 | 1,349,725,220 |
| 2005 | 537,869,897 | 693,599,008 | 53,486,449 | 1,284,955,354 |
| 2006 | 571,821,698 | 710,814,721 | 67,273,962 | 1,349,910,381 |
| 2007 | 611,476,442 | 672,290,544 | 71,412,494 | 1,355,179,480 |
| 2008 | 684,116,465 ² | 591,384,645 ² | 83,936,258 ² | 1,359,437,368 ² |
| 2009 | 961,272,181 ² | 492,295,157 ² | 74,861,501 ² | 1,528,428,839 ² |
| 2010 | 1,696,003,458 ² | 410,665,702 ² | 68,382,023 ² | 2,175,051,183 ² |
| 2011 | 2,513,264,565 ² | 397,703,367 ² | 69,827,275 ² | 2,980,795,207 ² |
| 2012 | 2,562,861,564 ¹ | 361,451,633 ¹ | 74,852,974 ¹ | 2,999,166,170 ¹ |

This issue of *Louisiana Energy Facts* is funded 100% (\$835) with Petroleum Violation Escrow funds as part of the State Energy Program as approved by the U.S. Department of Energy and Department of Natural Resources. This public document was published at a total cost of \$835. 970 copies of this public document were published in this first printing at a total cost of \$835. The total cost of all printing of this document, including reprints, is \$835. This document was published by the Department of Natural Resources, P.O. Box 94396, Baton Rouge, LA 70804-9396 to promulgate the State Energy Program developed under authority of P.L. 94-163. This material was printed in accordance with the standards for printing by State agencies established pursuant to R.S. 43.31.



LOUISIANA DEPARTMENT OF NATURAL RESOURCES
Technology Assessment Division
 P. O. Box 94396
 Baton Rouge, LA 70804-9396

PRST STD
 U.S. POSTAGE
PAID
 BATON ROUGE, LA
 PERMIT NO. 936

ADDRESS SERVICE REQUESTED

INSIDE

Highlights
page 1

Louisiana Crude Oil & Condensate Production
page 1

Current Oil & Gas Data
page 2

Louisiana Crude Oil and Condensate Production
page 3

Louisiana Natural Gas and Casinghead Gas Production
page 3

Quick Facts
page 4

Featured Articles and Inserts
[Results of the Empower Louisiana Transportation Efficiency and Alternative Fuels Grant Program](#)

Quick Facts

JANUARY 2013

Louisiana DNR Technology Assessment Division

| | Dec 12 | Nov 12 | Dec 11 |
|---|--------------------|--------------------|---------------------|
| SPOT MARKET PRICES | | | |
| Louisiana Natural Gas ^D (\$/MMBTU) | 3.39 | 3.46 | 3.20 |
| NYMEX Henry Hub Last Settle Gas Price ^B (\$/MMBTU) | 3.47 | 3.02 ² | 3.36 |
| Louisiana Sweet Crude - St. James ^B (\$/Barrel) | 109.47 | 108.51 | 108.62 ² |
| BAKER HUGHES RIG COUNTS | | | |
| | Nov 12 | Oct 12 | Nov 11 |
| North Louisiana ^A | 24 | 25 | 83 |
| South Louisiana Inland Waters ^A | 18 | 16 | 19 |
| South Louisiana Inland ^A | 24 | 23 | 24 |
| Louisiana State Offshore | 0 | 0 | 2 |
| Louisiana Federal OCS Offshore | 48 | 43 | 30 |
| Total Louisiana ^A (OCS included) | 114 | 107 | 158 |
| PRODUCTION (State Jurisdiction Only) | | | |
| | Nov 12 | Oct 12 | Nov 11 |
| Louisiana Crude Oil & Condensate (MMB) | 5.9 ¹ | 5.9 ¹ | 6.0 ² |
| Louisiana Natural Gas & Casinghead (BCF) | 251.7 ¹ | 247.2 ¹ | 266.3 ² |
| DRILLING PERMITS (State Jurisdiction Only) | | | |
| | Nov 12 | Oct 12 | Nov 11 |
| Total Louisiana Oil and Gas | 107 | 143 | 128 |
| Louisiana Wildcats | 4 | 7 | 4 |
| Louisiana Offshore (Wildcats included) | 0 | 3 | 0 |