

# LOUISIANA ENERGY FACTS

Louisiana Department of Natural Resources  
Technology Assessment Division

[www.dnr.louisiana.gov/tad](http://www.dnr.louisiana.gov/tad)

## INSIDE

**Highlights**  
page 1

**Louisiana Natural Gas & Casinghead Production**  
page 1

**Current Oil & Gas Data**  
page 2

**Important Notice**  
page 3

**Louisiana Mineral Royalty Revenue by Source**  
page 3

**Quick Facts**  
page 4

**Featured Articles and Inserts**  
[Louisiana, An Energy Consuming State: An Update Using 2013 Data](#)



Department of Natural Resources  
**Stephen Chustz**, Secretary

Technology Assessment Division  
**Thomas Harris**, Director  
**Manuel Lam**, Senior Analyst

617 North Third Street  
Baton Rouge, LA 70802

Tel. (225) 342-1270  
Fax. (225) 242-1397  
Email: [techasmt@la.gov](mailto:techasmt@la.gov)  
[www.dnr.louisiana.gov/tad](http://www.dnr.louisiana.gov/tad)

## Highlights

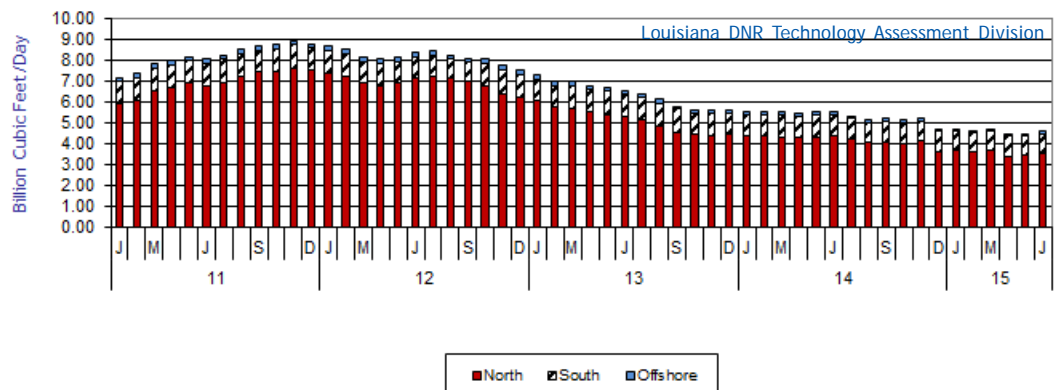
## AUGUST 2015

The West Texas Intermediate (WTI) crude oil spot price has hovered around \$50 per barrel. On July 28, 2015 WTI settled at \$47.98. The high level of U.S. crude oil inventories, increasing production from OPEC (Organization of the Petroleum Exporting Countries), Iran's crude oil production returning to pre-sanction levels, as well as the U.S. dollar appreciating against global currencies are expected to keep crude oil prices low. The recent EIA forecasts said that WTI crude oil prices will average \$55 per barrel in 2015 and \$62 per barrel in 2016. The EIA projected total U.S. crude oil production averages are 9.5 million barrels per day in 2015 and 9.3 million barrels per day in 2016.

### Louisiana Natural Gas & Casinghead Production\*\*, Excluding Federal OCS

Month	(Billion Cubic Feet/Day)						% Change	
	2010	2011	2012	2013	2014	2015	13/14	14/15
January	4.84	7.14	8.62 <sup>2</sup>	7.27 <sup>2</sup>	5.49 <sup>2</sup>	4.70		-14.40%
February	5.09	7.32	8.48 <sup>2</sup>	6.94 <sup>2</sup>	5.50 <sup>2</sup>	4.62		-16.05%
March	5.33	7.81	8.13 <sup>2</sup>	6.95 <sup>2</sup>	5.48 <sup>2</sup>	4.67		-14.67%
April	5.48	7.95	8.03 <sup>2</sup>	6.77 <sup>2</sup>	5.45 <sup>2</sup>	4.43		-18.65%
May	5.64	8.12	8.12 <sup>2</sup>	6.68 <sup>2</sup>	5.49 <sup>2</sup>	4.45 <sup>1</sup>		-19.04%
June	5.96	8.01 <sup>2</sup>	8.35 <sup>2</sup>	6.54 <sup>2</sup>	5.48 <sup>2</sup>	4.55 <sup>1</sup>		-16.95%
July	6.15	8.19	8.41 <sup>2</sup>	6.37 <sup>2</sup>	5.31 <sup>2</sup>		-16.67%	
August	6.29	8.47	8.23 <sup>2</sup>	6.09 <sup>2</sup>	5.10 <sup>2</sup>		-16.34%	
September	6.49	8.63	8.08 <sup>2</sup>	5.73 <sup>2</sup>	5.16 <sup>2</sup>		-9.88%	
October	6.46	8.72 <sup>2</sup>	8.01 <sup>2</sup>	5.56 <sup>2</sup>	5.09 <sup>2</sup>		-8.52%	
November	6.74	8.89 <sup>2</sup>	7.70 <sup>2</sup>	5.59 <sup>2</sup>	5.20 <sup>2</sup>		-6.85%	
December	6.99	8.75 <sup>2</sup>	7.50 <sup>2</sup>	5.60 <sup>2</sup>	4.68 <sup>2</sup>		-16.50%	
<b>Year Average</b>	<b>5.96</b>	<b>8.17<sup>2</sup></b>	<b>8.14<sup>2</sup></b>	<b>6.34<sup>2</sup></b>	<b>5.29<sup>2</sup></b>	<b>4.57<sup>**</sup></b>		

\*\* Partial Year



## Current Oil & Gas Data

Louisiana DNR Technology Assessment Division

PRODUCTION	FEB 15	JAN 15	DEC 14	FEB 14
GOM CENTRAL FEDERAL OFFSHORE <sup>F</sup> (OCS)				
Crude Oil & Condensate (MMB)	31	38 <sup>1</sup>	41 <sup>1</sup>	34 <sup>1</sup>
Natural Gas & Casinghead (BCF)	81	95 <sup>1</sup>	96 <sup>1</sup>	85 <sup>1</sup>
THE UNITED STATES TOTAL				
Crude Oil & Condensate <sup>C</sup> (MMB)	264	288 <sup>2</sup>	292 <sup>2</sup>	228 <sup>2</sup>
Natural Gas & Casinghead <sup>C</sup> (BCF)	2,070	2,277 <sup>2</sup>	2,315	1,889 <sup>2</sup>
<b>IMPORTS</b>				
U.S. Crude Oil <sup>C</sup> (MMB)	199	222	223	202
U.S. Natural Gas <sup>C</sup> (BCF)	254	280	254	245
<b>BAKER HUGHES RIG COUNTS</b>				
U.S. Gas <sup>A</sup>	296	320	342	341
U.S. Oil <sup>A</sup>	1,050	1,362	1,539	1,424
U.S. Offshore <sup>A</sup>	52	53	59	58
U.S. Total <sup>A</sup>	1,348	1,683	1,882	1,769
<b>PRICES</b>				
CRUDE OIL (\$/barrel)				
OPEC Average <sup>C</sup> (F.O.B.)	47.12	42.64 <sup>2</sup>	52.49	97.51
U.S. Imports Average <sup>C</sup> (F.O.B.)	43.86	40.09 <sup>2</sup>	50.01	92.76
U.S. Wellhead Average <sup>C</sup>	44.32	43.06	54.86	96.86 <sup>2</sup>
Gulf OCS Wellhead Average <sup>C</sup>	46.61	51.57	66.27	101.81 <sup>2</sup>
State Severance Wellhead Average <sup>E</sup>	N/A	N/A	N/A	96.40
NATURAL GAS (\$/MCF)				
U.S. City Gates Average <sup>C</sup>	4.55	4.46	5.16	6.44 <sup>2</sup>
U.S. Imports Average <sup>C</sup> (F.O.B.)	5.47	4.76 <sup>2</sup>	4.44	9.11 <sup>2</sup>
U.S. Spot Market Average <sup>D</sup>	3.87	3.56	3.78	8.22
State Royalty Wellhead Average	2.83	3.05 <sup>2</sup>	3.70	5.71 <sup>2</sup>
NYMEX Henry Hub End of the Month Settle Gas Price <sup>B</sup> (\$/MMBTU)	2.87	3.19	4.28	5.56

### Key

### Data Sources

<b>1</b>	Estimated	<b>MCF</b>	Thousand Cubic Feet
<b>2</b>	Revised	<b>MMB</b>	Million Barrels
<b>BCF</b>	Billion Cubic Feet	<b>N/A</b>	Not Available
<b>BTU</b>	British Thermal Unit	<b>OCS</b>	Outer Continental Shelf
<b>FO.B.</b>	Free on Board	<b>MMBTU</b>	Million British Thermal Units

<b>A</b>	Oil & Gas Journal	<b>D</b>	Natural Gas Week
<b>B</b>	Wall Street Journal	<b>E</b>	LA Dept of Revenue
<b>C</b>	U. S. Dept. of Energy	<b>F</b>	BOEM

**Note:** Unless otherwise specified, data is from the Louisiana Department of Natural Resources and excludes Federal OCS.

### Note from the Editors

*Louisiana Energy Facts* is published monthly by the Louisiana Department of Natural Resources, Technology Assessment Division as a public service to individuals interested in Louisiana energy activities. Content includes recent oil, gas and other energy statistics and a brief analysis of current trends.

*Louisiana Energy Facts* articles provide insight and information on subjects of special interest to our readers, and may announce relevant, forthcoming publications.

These documents are available on the Louisiana Department of Natural Resources, Technology Assessment Division home page: <http://dnr.louisiana.gov/index.cfm?md=pagebuilder&tmp=home&pid=35&ngid=2>. From the menu, select **Newsletters**. Our current online holdings include issues dating from 1998 through the present. If the issue you are seeking is unavailable, please contact us.

To request a subscription or to update your email and/or address, contact us with your information. We value your feedback, please send your comments and suggestions for improving and enhancing the newsletter to: [techasmt@la.gov](mailto:techasmt@la.gov).

## Important Notice

Dear Subscriber:

The Energy Facts Monthly is available on the Department of Natural Resources (DNR) website @ <http://dnr.louisiana.gov/index.cfm?md=pagebuilder&tmp=home&pid=35&ngid=2>

From the menu, select **Newsletters**. *The printed version of the monthly newsletter will be discontinued in November 2015.*

The move to an online-only format is an environmentally responsible one that will save resources in printing and publication costs, but the main motivation is to simply update and respond to the way people like to receive information in the 21st century. Over the years, the newsletter has undergone many changes, this is simply the latest one.

Future newsletters will continue to publish the same information you currently receive, but will not have the lag time in publishing. This will speed up the process of getting information to you in a timely manner.

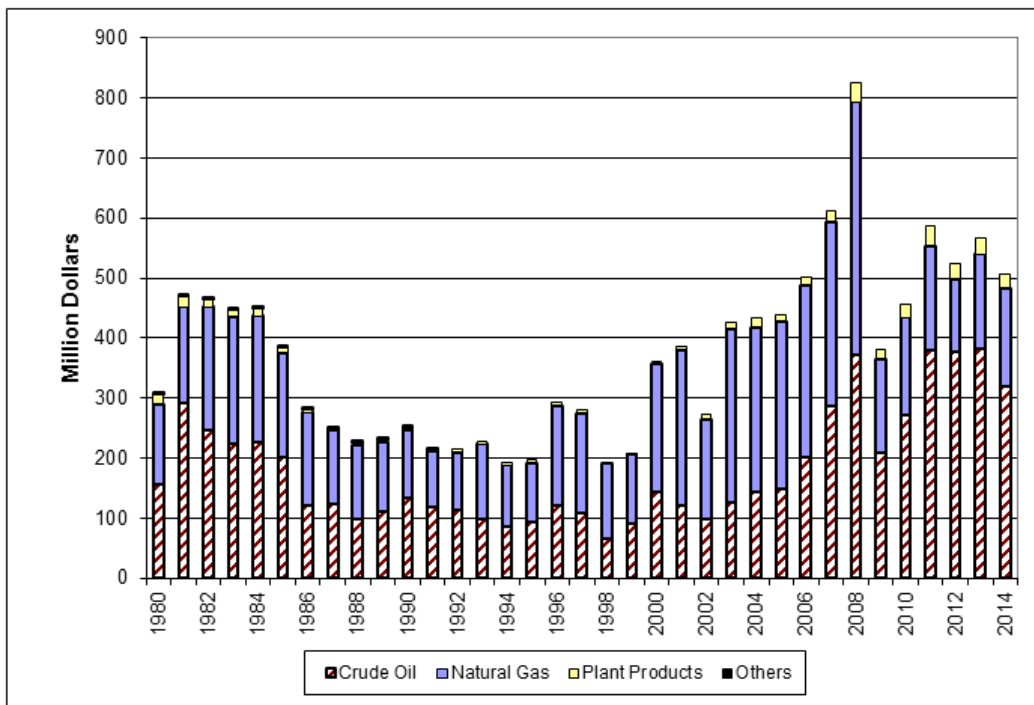
In order for us to notify you when the latest newsletter is available, please send your updated contact information to:

[TechAsmt@LA.gov](mailto:TechAsmt@LA.gov)

Please include in your email your name, place of business, current position, telephone number, and email address to confirm you would like to be notified when the latest edition of the newsletter is available on the DNR website each month.

## Louisiana Mineral Royalty Revenue by Source, Excluding Federal OCS

Louisiana DNR Technology Assessment Division



This issue of *Louisiana Energy Facts* is funded 100% (\$822.11) with Petroleum Violation Escrow funds as part of the State Energy Program as approved by the U.S. Department of Energy and Department of Natural Resources. This public document was published at a total cost of \$822.11. 930 copies of this public document were published in this first printing at a total cost of \$822.11. The total cost of all printing of this document, including reprints, is \$822.11. This document was published by the Department of Natural Resources, P.O. Box 94396, Baton Rouge, LA 70804-9396 to promulgate the State Energy Program developed under authority of P.L. 94-163. This material was printed in accordance with the standards for printing by State agencies established pursuant to R.S. 43.31.



**LOUISIANA DEPARTMENT OF NATURAL RESOURCES**  
*Technology Assessment Division*  
 P. O. Box 94396  
 Baton Rouge, LA 70804-9396

PRST STD  
 U.S. POSTAGE  
**PAID**  
 BATON ROUGE, LA  
 PERMIT NO. 936

## ADDRESS SERVICE REQUESTED

### INSIDE

**Highlights**  
 page 1

**Louisiana Natural Gas & Casinghead Production**  
 page 1

**Current Oil & Gas Data**  
 page 2

**Important Notice**  
 page 3

**Louisiana Mineral Royalty Revenue by Source**  
 page 3

**Quick Facts**  
 page 4

**Featured Articles and Inserts**  
[Louisiana, An Energy Consuming State: An Update Using 2013 Data](#)

## Quick Facts

## AUGUST 2015

Louisiana DNR Technology Assessment Division

	Jul 15	Jun 15	Jul 14
<b>SPOT MARKET PRICES</b>			
Louisiana Natural Gas <sup>D</sup> (\$/MMBTU)	2.76	2.70	4.01
NYMEX Henry Hub Last Settle Gas Price <sup>B</sup> (\$/MMBTU)	2.77	2.82	4.40
Louisiana Sweet Crude - St. James <sup>B</sup> (\$/Barrel)	54.69	63.23	106.41
<b>BAKER HUGHES RIG COUNTS</b>			
	Jun 15	May 15	Jun 14
North Louisiana <sup>A</sup>	26	27	27
South Louisiana Inland Waters <sup>A</sup>	5	3	16
South Louisiana Inland <sup>A</sup>	12	10	15
Louisiana State Offshore	0	0	1
Louisiana Federal OCS Offshore	28	30	50
Total Louisiana <sup>A</sup> (OCS included)	71	70	109
<b>PRODUCTION (State Jurisdiction Only)</b>			
	Jun 15	May 15	Jun 14
Louisiana Crude Oil & Condensate (MMB)	6.1 <sup>1</sup>	6.2 <sup>1</sup>	6.5 <sup>2</sup>
Louisiana Natural Gas & Casinghead (BCF)	136.5 <sup>1</sup>	137.8 <sup>1</sup>	164.2 <sup>2</sup>
<b>DRILLING PERMITS (State Jurisdiction Only)</b>			
	Jun 15	May 15	Jun 14
Total Louisiana Oil and Gas	69	64	159
Louisiana Wildcats	0	2	5
Louisiana Offshore (Wildcats included)	0	1	0