

# LOUISIANA ENERGY FACTS

Louisiana Department of Natural Resources  
Technology Assessment Division

[www.dnr.louisiana.gov/tad](http://www.dnr.louisiana.gov/tad)

## INSIDE

**Highlights**  
page 1

**Louisiana Natural Gas and Casinghead Production**  
page 1

**Current Oil & Gas Data**  
page 2

**Louisiana Mineral Royalty Revenue by Source**  
page 3

**Louisiana Mineral Severance Tax Revenue by Source**  
page 3

**Quick Facts**  
page 4

**Featured Articles and Inserts**  
[Louisiana, an Energy Consuming State: An Update Using 2016 Data](#)



Department of Natural Resources

Thomas Harris, Secretary

Technology Assessment Division

Jason Lanclos, Director  
Edward O'Brien, Economist

617 North Third Street  
Baton Rouge, LA 70802

Tel. (225) 342-1270  
Fax. (225) 242-1397  
Email: [techasmt@la.gov](mailto:techasmt@la.gov)  
[www.dnr.louisiana.gov/tad](http://www.dnr.louisiana.gov/tad)

## Highlights

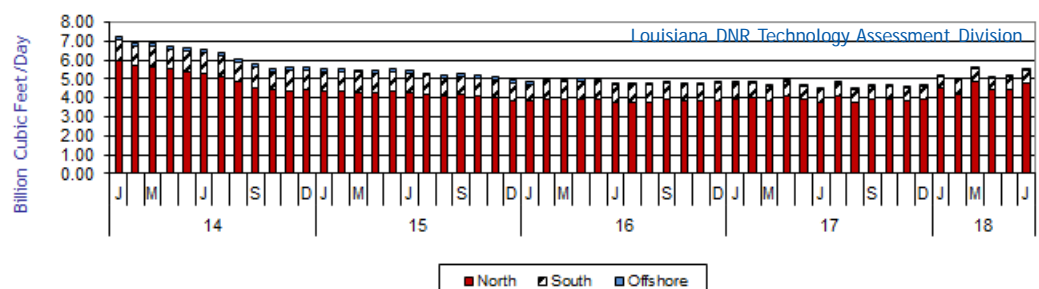
## AUGUST 2018

West Texas Intermediate (WTI) crude oil spot price is over \$70 per barrel. On July 31, 2018, WTI settled at \$71.76 per barrel. The recent EIA forecasts expects WTI prices to average \$60 per barrel in 2018, with the second half of 2018 averaging \$77 per barrel, and \$63 per barrel in 2019. Brent crude prices are expected to have a premium as compared to WTI prices, seeing \$73 for the rest of 2018, and expecting to average \$69 in 2018. The EIA has an optimistic outlook for the end of 2018, with the second half of the year seeing some upward price pressure due to possible supply constraints compared to global demand. The most uncertainty dealing with supply, and ultimately price, remains with OPEC and the volume cuts, which have been in place since the first half of the year, and the political crisis happening in the Middle East.

### Louisiana Natural Gas and Casinghead Production\*\*, Excluding Federal OCS

Month	(Billion Cubic Feet/Day)						% Change	
	2013	2014	2015	2016	2017	2018	16/17	17/18
January	7.26	5.51	4.86	4.84	5.23 <sup>2</sup>	6.97		33.33%
February	6.93	5.51	4.99	4.88	4.98 <sup>2</sup>	6.90		38.66%
March	6.94	5.50	4.99	4.72 <sup>2</sup>	5.63 <sup>2</sup>	6.95		23.45%
April	6.76	5.47	5.02	4.94 <sup>2</sup>	5.13 <sup>2</sup>	7.00 <sup>1</sup>		36.57%
May	6.68	5.51	4.97	4.72 <sup>2</sup>	5.17 <sup>2</sup>	7.23 <sup>1</sup>		39.87%
June	6.54	5.45	4.80	4.57	5.50 <sup>2</sup>	7.35 <sup>1</sup>		33.56%
July	6.38	5.29	4.82	4.86 <sup>2</sup>	5.29		8.86%	
August	6.10	5.19	4.81	4.51	5.83		29.27%	
September	5.80	5.27	4.91	4.68 <sup>2</sup>	6.15		31.37%	
October	5.56 <sup>2</sup>	5.16	4.81	4.66 <sup>2</sup>	6.68		43.22%	
November	5.59 <sup>2</sup>	5.11	4.79	4.56 <sup>2</sup>	6.66		46.05%	
December	5.62 <sup>2</sup>	4.93	4.84	4.68	6.59		40.68%	
<b>Year Average</b>	<b>6.35</b>	<b>5.33</b>	<b>4.88</b>	<b>4.72<sup>2</sup></b>	<b>5.74</b>	<b>7.07<sup>**</sup></b>		

\*\* Partial Year



## Current Oil & Gas Data

Louisiana DNR Technology Assessment Division

<b>PRODUCTION</b>	<b>FEB 18</b>	<b>JAN 18</b>	<b>DEC 17</b>	<b>FEB 17</b>
<b>GOM CENTRAL FEDERAL OFFSHORE <sup>F</sup> (OCS)</b>				
Crude Oil & Condensate (MMB)	44	47 <sup>2</sup>	45	46 <sup>2</sup>
Natural Gas & Casinghead (BCF)	65	68	68	82 <sup>2</sup>
<b>THE UNITED STATES TOTAL</b>				
Crude Oil & Condensate <sup>C</sup> (MMB)	287	310	311	253 <sup>2</sup>
Natural Gas & Casinghead <sup>C</sup> (BCF)	2,365	2,566 <sup>2</sup>	2,607 <sup>2</sup>	2,019 <sup>2</sup>
<b>IMPORTS</b>				
U.S. Crude Oil <sup>C</sup> (MMB)	201	248	241	221
U.S. Natural Gas <sup>C</sup> (BCF)	241	304 <sup>2</sup>	278 <sup>2</sup>	255
<b>BAKER HUGHES RIG COUNTS</b>				
U.S. Gas <sup>A</sup>	180	187	182	150
U.S. Oil <sup>A</sup>	788	750	748	593
U.S. Offshore <sup>A</sup>	17	18	19	20
U.S. Total <sup>A</sup>	969	937	911 <sup>2</sup>	744
<b>PRICES</b>				
<b>CRUDE OIL (\$/barrel)</b>				
OPEC Average <sup>C</sup> (F.O.B.)	61.07	64.12 <sup>2</sup>	61.52 <sup>2</sup>	49.11
U.S. Imports Average <sup>C</sup> (F.O.B.)	53.42	55.73	53.68	45.91 <sup>2</sup>
U.S. Wellhead Average <sup>C</sup>	61.20	62.25	56.98	49.41
Gulf OCS Wellhead Average <sup>C</sup>	62.60	61.88	58.22	48.97
State Severance Wellhead Average <sup>E</sup>	56.34	61.29 <sup>2</sup>	53.38 <sup>2</sup>	53.14
<b>NATURAL GAS (\$/MCF)</b>				
U.S. City Gates Average <sup>C</sup>	3.97	4.31	4.00	4.13 <sup>2</sup>
U.S. Imports Average <sup>C</sup> (F.O.B.)	3.01	4.40	3.26	3.14
U.S. Spot Market Average <sup>D</sup>	3.05	4.74	3.30	2.98
State Royalty Wellhead Average	2.96	3.39 <sup>2</sup>	2.84 <sup>2</sup>	2.89 <sup>2</sup>
NYMEX Henry Hub End of the Month Settle Gas Price <sup>B</sup> (\$/MMBTU)	3.63	2.74	3.07	3.39

### Key

<b>1</b>	Estimated	<b>MCF</b>	Thousand Cubic Feet
<b>2</b>	Revised	<b>MMB</b>	Million Barrels
<b>BCF</b>	Billion Cubic Feet	<b>NA</b>	Not Available
<b>BTU</b>	British Thermal Unit	<b>OCS</b>	Outer Continental Shelf
<b>FO.B.</b>	Free on Board	<b>MMBTU</b>	Million British Thermal Units

### Data Sources

<b>A</b>	Oil & Gas Journal	<b>D</b>	Natural Gas Week
<b>B</b>	Wall Street Journal	<b>E</b>	LA Dept of Revenue
<b>C</b>	U. S. Dept. of Energy	<b>F</b>	BOEM

**Note:** Unless otherwise specified, data is from the Louisiana Department of Natural Resources and excludes Federal OCS.

### Note from the Editors

*Louisiana Energy Facts* is published monthly by the Louisiana Department of Natural Resources, Technology Assessment Division as a public service to individuals interested in Louisiana energy activities. Content includes recent oil, gas and other energy statistics and a brief analysis of current trends.

*Louisiana Energy Facts* articles provide insight and information on subjects of special interest to our readers, and may announce relevant, forthcoming publications.

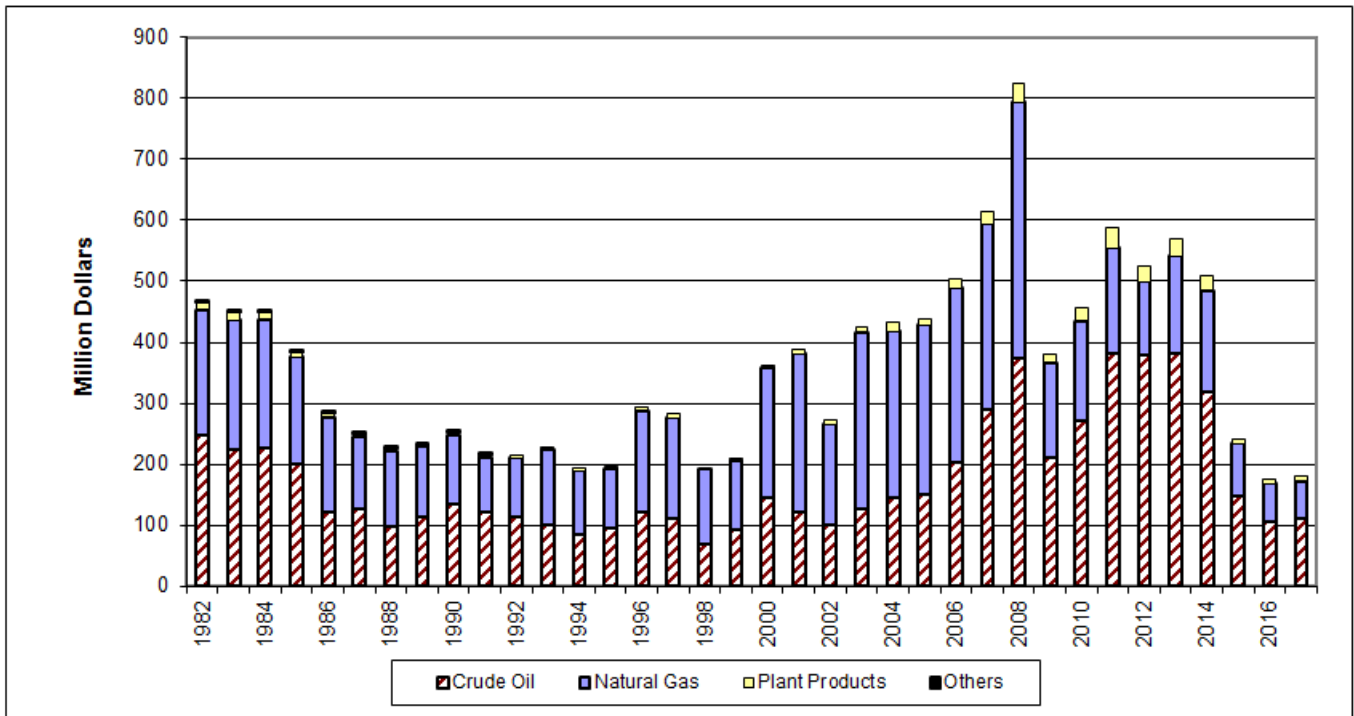
These documents are available on the Louisiana Department of Natural Resources, Technology Assessment Division home page:

<http://www.dnr.louisiana.gov/tad>. From the menu, select **Newsletters**. Our current online holdings include issues dating from 1998 through the present. If the issue you are seeking is unavailable, please contact us.

To request notification of when the *Louisiana Energy Facts* is available online, contact us at [techasmt@la.gov](mailto:techasmt@la.gov) with your name, title, company name, email address, and phone number. Please specify that you would like to be added to our email notification database for an electronic subscription.

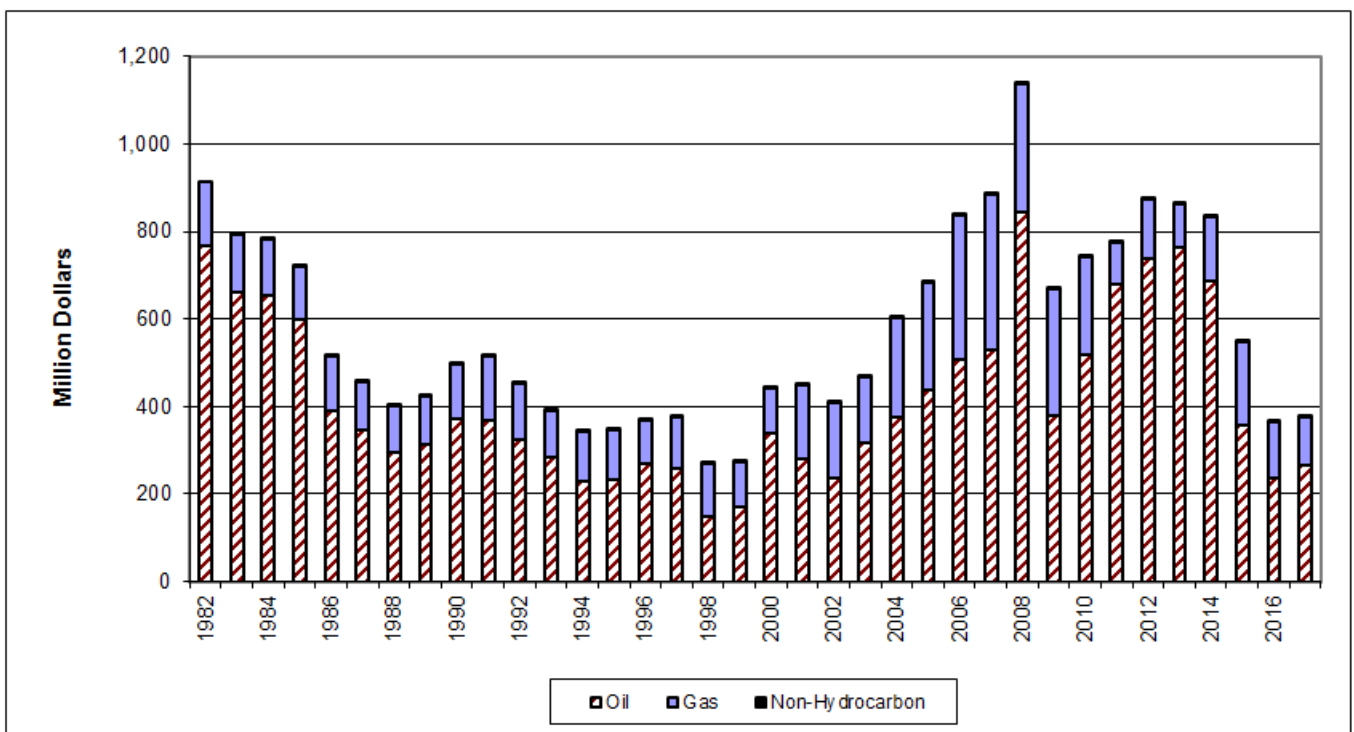
# Louisiana Mineral Royalty Revenue by Source, Excluding Federal OCS

Louisiana DNR Technology Assessment Division



# Louisiana Mineral Severance Tax Revenue by Source, Excluding Federal OCS

Louisiana DNR Technology Assessment Division





LOUISIANA DEPARTMENT OF NATURAL RESOURCES

Technology Assessment Division

P. O. Box 94396

Baton Rouge, LA 70804-9396

**INSIDE**

**Highlights**  
page 1

**Louisiana Natural Gas and Casinghead Production**  
page 1

**Current Oil & Gas Data**  
page 2

**Louisiana Mineral Royalty Revenue by Source**  
page 3

**Louisiana Mineral Severance Tax Revenue by Source**  
page 3

**Quick Facts**  
page 4

**Featured Articles and Inserts**  
[Louisiana, an Energy Consuming State: An Update Using 2016 Data](#)

**Quick Facts**

**AUGUST 2018**

Louisiana DNR Technology Assessment Division

**SPOT MARKET PRICES**

	<b>Jul 18</b>	<b>Jun 18</b>	<b>Jul 17</b>
Louisiana Natural Gas <sup>D</sup> (\$/MMBTU)	2.79	2.83 <sup>2</sup>	2.92
NYMEX Henry Hub Last Settle Gas Price <sup>B</sup> (\$/MMBTU)	3.00	2.94	3.00 <sup>2</sup>
Louisiana Sweet Crude - St. James <sup>B</sup> (\$/Barrel)	72.77	74.58 <sup>2</sup>	48.61 <sup>2</sup>

**BAKER HUGHES RIG COUNTS**

	<b>Jun 18</b>	<b>May 18</b>	<b>Jun 17</b>
North Louisiana <sup>A</sup>	37	37	39
South Louisiana Inland Waters <sup>A</sup>	3	3	4
South Louisiana Inland <sup>A</sup>	2	3	1
Louisiana State Offshore	0	0	0
Louisiana Federal OCS Offshore	17	18	21
Total Louisiana <sup>A</sup> (OCS included)	59	61	65

**PRODUCTION (State Jurisdiction Only)**

	<b>Jun 18</b>	<b>May 18</b>	<b>Jun 17</b>
Louisiana Crude Oil & Condensate (MMB)	4.3 <sup>1</sup>	4.6 <sup>1</sup>	4.2
Louisiana Natural Gas & Casinghead (BCF)	220.4 <sup>1</sup>	224.1 <sup>1</sup>	165.0 <sup>1</sup>

**DRILLING PERMITS (State Jurisdiction Only)**

	<b>Jun 18</b>	<b>May 18</b>	<b>Jun 17</b>
Total Louisiana Oil and Gas	72	81	75
Louisiana Wildcats	0	0	1
Louisiana Offshore (Wildcats included)	0	0	0