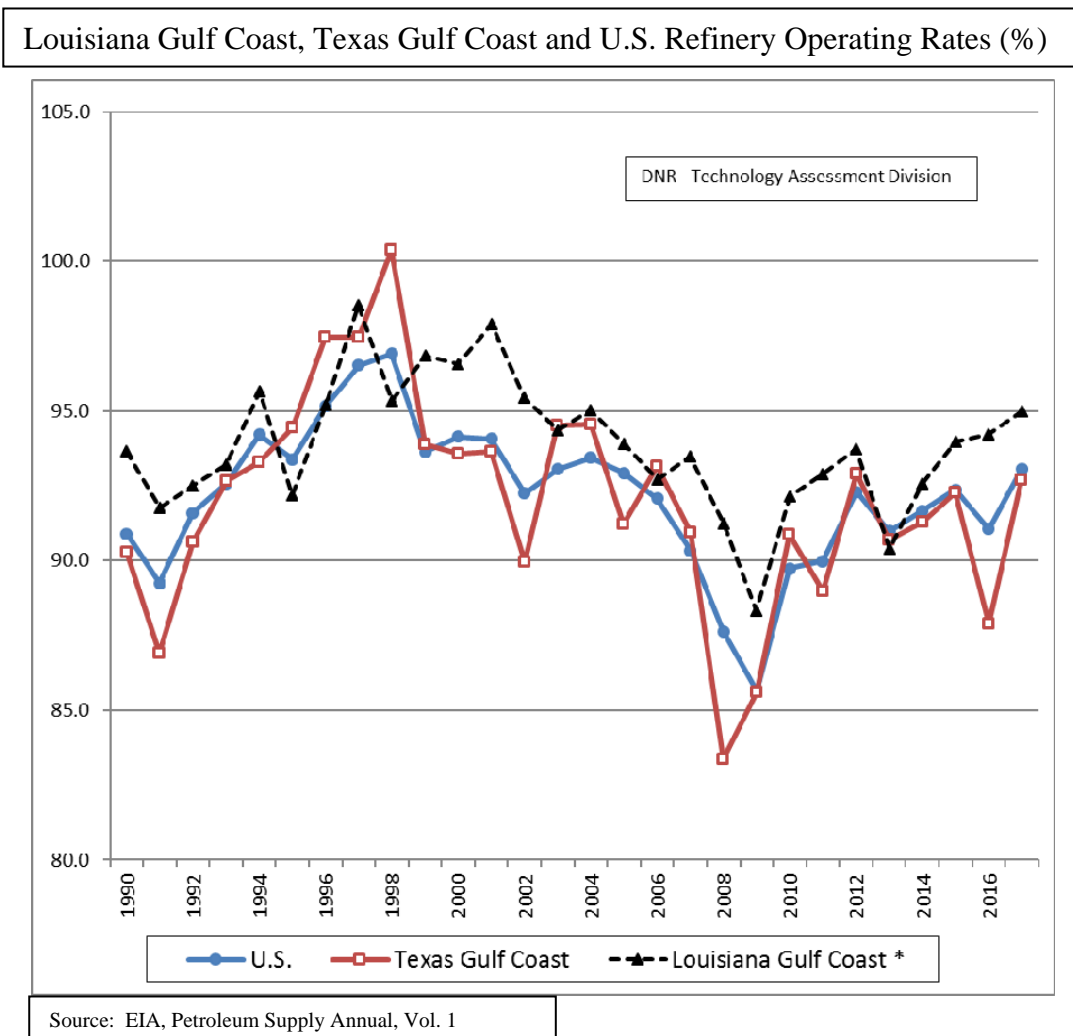


HIGHLIGHTS OF THE 22nd EDITION OF THE LOUISIANA CRUDE OIL REFINERY SURVEY REPORT

by
Edward O'Brien, III

The 22nd edition of the Department of Natural Resources (DNR) *Louisiana Crude Oil Refinery Survey Report* covers calendar year 2017. The 16 Louisiana refineries have a combined operating capacity of 3.51 million barrels per calendar day (MBCD), and the operating rate for that period was 95.0%. The total U.S. refinery-operating rate was 91.0% for the same period, with a combined operating capacity of 18,568 MBCD.

Louisiana's refinery capacity increased 0.5 MBCD from our last report. Louisiana refineries combined throughput for the 12-month period was 1.27 billion barrels. Marathon Petroleum Co., LLC at Garyville has the most refining capacity in Louisiana and it is the third largest refinery in the U.S. Table 1 shows the Louisiana operating refinery capacity and throughput information and Table 2 lists the top six refinery products based on percent of total refinery production from DNR's last survey. Motor gasoline remains the largest share of refinery production in Louisiana at about 40% of the total. The figure below shows the Louisiana Gulf Coast, Texas Gulf Coast, and total U.S. refinery operating rates since 1991.



The full report will be available online in PDF format later this year on the Department of Natural Resources Technology Assessment Division website:
http://www.dnr.louisiana.gov/assets/TAD/reports/refinery_survey/RefineryReport_2017.pdf

Table 1. Louisiana Operating Refinery Capacity and Throughput

Refinery	Operating capacity as of 12/31/2017 (bcd)	Operating Capacity Change ¹ (%)	Throughput 1/1/2017 - 12/31/2017 (Barrels)	Throughput Change ² (%)
Alon Refining, Krotz Springs	80,000	0.00%	24,483,235	10.61%
Calcasieu Refining, Lake Charles	104,000	16.85%	35,902,690	21.30%
Calumet Lubricants, Cotton Valley	13,020	0.00%	2,525,908	14.62%
Calumet Lubricants, Princeton	8,300	0.00%	2,422,626	4.68%
Calumet Shreveport, Shreveport	57,000	0.00%	14,980,614	0.69%
Chalmette Refining, Chalmette	190,000	-1.30%	56,459,873	8.81%
Citgo Petroleum Corp, Lake Charles	425,000	-0.65%	133,811,137	-5.01%
ExxonMobil Refining & Supply Co, Baton Rouge	502,500	0.00%	174,336,516	-4.35%
Marathon Petroleum Co LLC, Garyville	543,000	0.74%	196,610,016	1.41%
Motiva Enterprises LLC, Convent	227,586	-3.15%	86,540,065	10.48%
Motiva Enterprises LLC, Norco	225,800	-5.01%	83,943,578	1.15%
Phillips 66, Belle Chasse	247,000	0.00%	89,354,043	9.74%
Phillips 66, West Lake	260,000	0.00%	80,961,925	-4.57%
Placid Refining Co, Port Allen	75,000	0.00%	25,679,493	-0.70%
Valero Refining Co, Meraux	125,000	0.00%	42,821,882	16.11%
Valero Refining Co, Norco	215,000	0.00%	44,772,799	0.48%
Totals	3,300,223		1,095,606,400	

1. Change from end date (12/31/2016) of previous DNR report to end date (12/31/2017) of 2017 DNR report.

2. Change from previous DNR report throughput (2016) to DNR report throughput (2017).

Table 2. Top Products from LA Refineries by % of Product Slate

Product	Total Product Slate (%)
Motor gasoline	39.2
Diesel fuel	22.8
Jet fuel	6.8
Residual/Coke	3.4
Gas mixture	2.6
Lubricants	0.6