

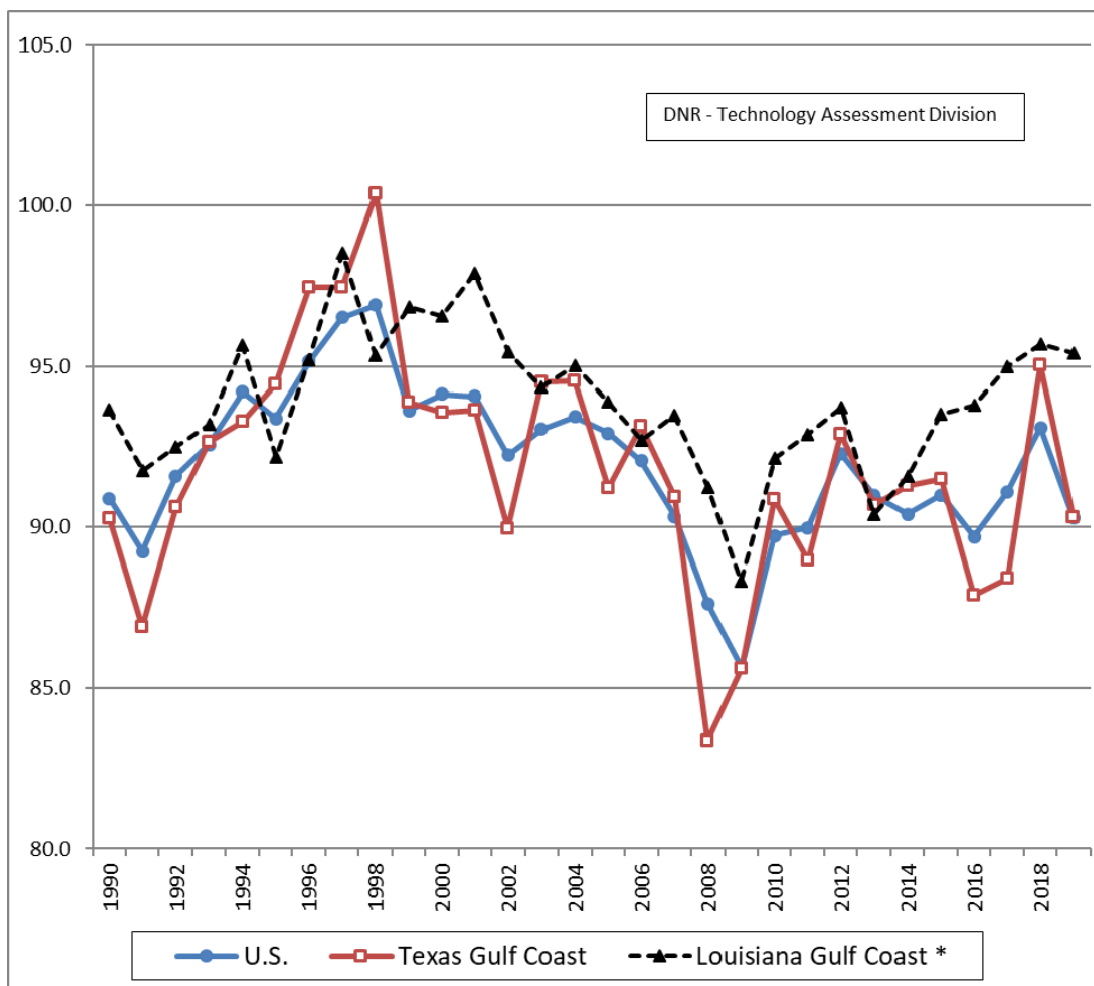
HIGHLIGHTS OF THE 24th EDITION OF THE LOUISIANA CRUDE OIL REFINERY SURVEY REPORT

by
Edward O'Brien, III

The 23rd edition of the Department of Natural Resources (DNR) *Louisiana Crude Oil Refinery Survey Report* covers calendar year 2019. The 17 Louisiana refineries have a combined operating capacity of 3.99 million barrels per calendar day (MBCD), and the operating rate for that period was 95.7%. The total U.S. refinery-operating rate was 90.3% for the same period, with a combined operating capacity of 18,435 MBCD.

Louisiana's refinery capacity increased 0.3 MBCD from our last report. Louisiana refineries combined throughput for the 12-month period was 1.42 billion barrels. Marathon Petroleum Co., LLC at Garyville has the most refining capacity in Louisiana and it is the third largest refinery in the U.S. Table 1 shows the Louisiana operating refinery capacity and throughput information and Table 2 lists the top six refinery products based on percent of total refinery production from DNR's last survey. Motor gasoline remains the largest share of refinery production in Louisiana at about 40% of the total. The figure below shows the Louisiana Gulf Coast, Texas Gulf Coast and total U.S. refinery operating rates since 1991.

Louisiana Gulf Coast, Texas Gulf Coast and U.S. Refinery Operating Rates (%)



The full report is available online in PDF format later this year on the Department of Natural Resources Technology Assessment Division website: http://www.dnr.louisiana.gov/assets/TAD/reports/refinery_survey/RefineryReport_2019.pdf

Table 1. Louisiana Operating Refinery Capacity and Throughput

Refinery	Operating capacity as of 12/31/2019 (bcd)	Operating Capacity Change ¹ (%)	Throughput 1/1/2019 - 12/31/2019 (Barrels)	Throughput Change ² (%)
Alon Refining, Krotz Springs	78,500	-1.91%	28,041,262	31.39%
Calcasieu Refining, Lake Charles	85,500	-46.20%	46,316,578	53.90%
Calumet Lubricants, Cotton Valley	13,300	2.11%	3,379,780	29.51%
Calumet Lubricants, Princeton	8,222	-0.95%	4,019,393	71.72%
Calumet Shreveport, Shreveport	57,000	0.00%	549,544	-96.29%
Chalmette Refining, Chalmette	187,150	-1.52%	70,754,906	19.01%
Citgo Petroleum Corp, Lake Charles	418,000	0.00%	149,493,823	2.70%
ExxonMobil Refining & Supply Co, Baton Rouge	503,000	0.10%	272,526,637	52.73%
Marathon Petroleum Co LLC, Garyville	578,000	3.81%	274,325,409	38.54%
Equilion Enterprises LLC, Convent	229,000	8.39%	87,813,816	2.81%
Equilion Enterprises LLC, Norco	239,000	8.70%	91,448,700	9.20%
Phillips 66, Belle Chasse	255,000	3.14%	94,987,048	45.12%
Phillips 66, West Lake	249,000	-4.42%	114,994,996	35.11%
Placid Refining Co, Port Allen	82,000	8.54%	41,953,863	54.51%
Valero Refining Co, Meraux	125,000	36.00%	92,296,648	189.96%
Valero Refining Co, Norco	215,000	41.86%	50,573,920	22.98%
Totals	3,476,322		1,423,476,323	

1. Change from end date (12/31/2018) of previous DNR report to end date (12/31/2019) of 2019 DNR report.

2. Change from previous DNR report throughput (2018) to DNR report throughput (2019).

Table 2. Top Products from LA Refineries by % of Product Slate

Product	Total Product Slate (%)
Motor gasoline	39.2
Diesel fuel	23.6
Jet fuel	7.8
Gas mixture	5.2
Residual/Coke	2.9
Lubricants	2.8