

Louisiana Energy Facts

INSIDE THIS ISSUE:

Highlights
page 1

Oil and Gas Permits
Issued by the State of
Louisiana
page 1

Current Oil & Gas Data
page 2

Louisiana Energy
Facts Index of
Previous Issues
page 3

Quick Facts
page 4



Department of Natural
Resources
Thomas Harris, Secretary

Technology Assessment
Division
Jason Lanolos, Director
Edward O'Brien, Economist

617 North Third Street Baton
Rouge, LA 70802

Tel. (225) 342-1270 Fax.
(225) 242-1397 Email:

techasmt@la.gov
www.dnr.louisiana.gov/tad

Highlights

The average number of active drilling rigs in the U.S. is increasing year-over-year, according to Baker Hughes Inc. data. In November 2022, the average active drilling rig count in the U.S. was 779, a 39.1% increase from November 2021; while in Louisiana State

lands and water, the average active drilling rigs count was 56, a 12.5% increase from November 2021. The increase occurred can be attributed to higher demand, and hence higher prices, due to tightening in global supply. The November average spot price for Louisiana Light Sweet crude oil was \$88.41 per barrel, a 11.32% increase

from November 2021, when it was \$79.42. The November average gas spot price was \$5.37 per MMBTU in Louisiana, 7.0% higher than in November 2021, when it was \$5.02 per MMBTU.

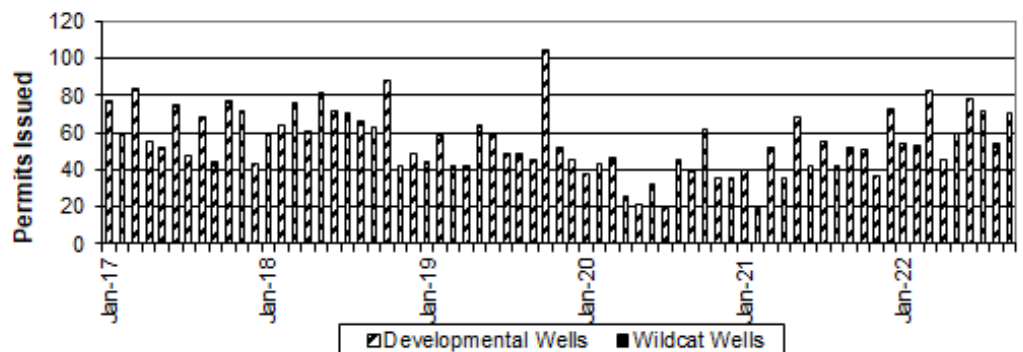
December 2022

Oil and Gas Drilling Permits Issued by the State of Louisiana

Permits Issued

Month	2017	2018	2019	2020	2021	2022	% Change	
							20/21	21/22
January	77	59	44	38	40	54		35.00%
February	59	64	58	43	16	53		231.25%
March	84	76	42	45	52	83		59.62%
April	55	60	42	26	35	45		28.57%
May	52	81	64	21	68	86		26.47%
June	75	72	60	32	42	78		85.71%
July	47	70	48	19	55	72		30.91%
August	68	66	48	45	42	54		28.57%
September	44	63	45	40	52	70		34.62%
October	77	88	104	62	51		-17.74%	
November	72	42	52	35	37		5.71%	
December	43	49	45	36	79		119.44%	
Year Average	40	63	70	56	34	66*		

* Partial Year



Current Oil & Gas Data

Louisiana DNR Technology Assessment Division

PRODUCTION	JUN 22	MAY 22	APR 22	JUN 21
GOM CENTRAL FEDERAL OFFSHORE ^F (OCS)				
Crude Oil & Condensate (MMB)	48	47	50	50
Natural Gas & Casinghead (BCF)	58	58	62	64
THE UNITED STATES TOTAL				
Crude Oil & Condensate ^C (MMB)	354	361	350	448
Natural Gas & Casinghead ^C (BCF)	3,211	3,296	3,151	3,028
IMPORTS				
U.S. Crude Oil ^C (MMB)	194	191	182	198
U.S. Natural Gas ^C (BCF)	230	233	247	208
BAKER HUGHES RIG COUNTS				
U.S. Gas ^A	153	149	142	97
U.S. Oil ^A	585	570	548	367
U.S. Offshore ^A	16	16	13	13
U.S. Total ^A	738	719	690	464
PRICES				
CRUDE OIL (\$/barrel)				
OPEC Average ^C (F.O.B.)	116.85	115.18	109.49	71.60
U.S. Imports Average ^C (F.O.B.)	107.17	103.75	99.53	64.97
U.S. Wellhead Average ^C	113.77	108.29	103.28	70.12
Gulf OCS Wellhead Average ^C	111.67	106.82	104.48	68.53
State Severance Wellhead Average ^E	102.77	104.37	94.44	57.30
NATURAL GAS (\$/MCF)				
U.S. City Gates Average ^C	10.13	8.45	6.34	4.87
U.S. Imports Average ^C (F.O.B.)	6.97	6.66	5.46	2.83
U.S. Spot Market Average ^D	8.38	8.42	6.57	3.03
State Royalty Wellhead Average	8.26	7.49	5.91	3.02
NYMEX Henry Hub End of the Month Settle Gas Price ^B (\$/MMBTU)	8.91	7.56	5.34	2.98

Key

1	Estimated	MCF	Thousand Cubic Feet
2	Revised	MMB	Million Barrels
BCF	Billion Cubic Feet	N/A	Not Available
BTU	British Thermal Unit	OCS	Outer Continental Shelf
F.O.B	Free on Board	MMBTU	Million British Thermal Units

Data Sources

A	Oil & Gas Journal	D	Natural Gas Week
B	Wall Street Journal	E	LA Dept of Revenue
C	U. S. Dept. of Energy	F	BOEM

Note: Unless otherwise specified, data is from the Louisiana Department of Natural Resources and excludes Federal OCS.

Note from the Editors

Louisiana Energy Facts is published monthly by the Louisiana Department of Natural Resources, Technology Assessment Division as a public service to individuals interested in Louisiana energy activities. Content includes recent oil, gas and other energy statistics and a brief analysis of current trends.

Louisiana Energy Facts articles provide insight and information on subjects of special interest to our readers, and may announce relevant, forthcoming publications.

These documents are available on the Louisiana Department of Natural Resources, Technology Assessment Division home page: <http://www.dnr.louisiana.gov/tad>. From the menu, select Newsletters. Our current online holdings include issues dating from 1998 through the present.

If the issue you are seeking is unavailable, please contact us.

To request notification of when the Louisiana Energy Facts is available online, contact us at techasm@la.gov with your name, title, company name, email address, and phone number. Please specify that you would like to be added to our email notification database for an electronic subscription.

Louisiana Energy Facts

LOUISIANA ENERGY FACTS INDEX OF PREVIOUS ISSUES

LIST OF TABLES

MONTH PUBLISHED

Page 1

Louisiana Monthly Crude Oil and Condensate Production, Excluding Federal OCS	January & July
Louisiana Natural Gas and Casinghead Production, Excluding Federal OCS	February & August
Louisiana Natural Gas Average Spot Prices	March & October
Light Louisiana Sweet Crude Oil Average Spot Price at St. James	April & September
Oil & Gas Drilling Permits Issued by the State of Louisiana	May & December
Louisiana Average Active Rigs in Areas Under State Jurisdiction	June & November

Page 2

Current Oil and Gas Data	January - December
--------------------------	--------------------

Page 3

Louisiana Crude Oil and Condensate Production, Excluding Federal OCS	January
Louisiana Natural Gas and Casinghead Gas Production, Excluding Federal OCS	January
Louisiana and the United States Active Rig Counts	February
Natural Gas Average Prices (U.S. and Louisiana)	March
Average Crude Oil Prices (U.S. and Louisiana)	April
2019 Louisiana State Producing Oil Wells, by Production Rate, OCS Wells Excluded	May
2019 Louisiana State Producing Gas Wells, by Production Rate, OCS Wells Excluded	May
Louisiana Non-Agricultural Employment	June
Louisiana Estimated Crude Oil Proved Reserves, Excluding Lease Condensate	September
Louisiana Estimated Lease Condensate Proved Reserves	September
Louisiana Estimated Dry Natural Gas Proved Reserves	October
Louisiana Estimated Natural Gas Liquids Proved Reserves, Excluding Lease Condensate	October
Louisiana Estimated Crude Oil Imports and Exports	November
Louisiana Estimated Natural Gas Imports and Exports	November

LIST OF FIGURES

MONTH PUBLISHED

Page 1

Louisiana Crude Oil & Condensate Production, Excluding Federal OCS	January & July
Louisiana Natural Gas and Casinghead Production, Excluding Federal OCS	February & August
Louisiana Natural Gas Average Spot Prices	March & October
Light Louisiana Sweet Crude Oil Average Spot Price at St. James	April & September
Oil & Gas Drilling Permits Issued by the State of Louisiana	May & December
Louisiana Average Active Rigs in Areas Under State Jurisdiction	June & November

Page 3

Natural Gas Average Prices	March
Average Crude Oil Prices	April
Louisiana Natural Gas Production from Incapable Oil and Gas Wells	July
Louisiana Crude Oil Production from Stripper Wells	July
Louisiana Mineral Severance Tax Revenue by Source, Excluding Federal OCS	August
Louisiana Mineral Royalty Revenue by Source, Excluding Federal OCS	August

Quick Facts

December 2022

Louisiana DNR Technology Assessment Division

Department of Natural Resources

Thomas Harris, Secretary

Technology Assessment Division

Jason Lanclos, Director
Edward O'Brien, Economist

617 North Third Street
Baton Rouge, LA 70802

Tel. (225) 342-1270 Fax.
(225) 242-1397 Email:

techasmt@la.gov
www.dnr.louisiana.gov/tad

SPOT MARKET PRICES

Louisiana Natural Gas^D (\$/MMBTU)

NYMEX Henry Hub Last Settle Gas Price^B (\$/MMBTU)

Louisiana Sweet Crude - St. James^B (\$/Barrel)

BAKER HUGHES RIG COUNTS

North Louisiana^A

South Louisiana Inland Waters^A

South Louisiana Inland^A

Louisiana State Offshore

Louisiana Federal OCS Offshore

Total Louisiana^A (OCS included)

PRODUCTION (State Jurisdiction Only)

Louisiana Crude Oil & Condensate (MMB)

Louisiana Natural Gas & Casinghead (BCF)

DRILLING PERMITS (State Jurisdiction Only)

Total Louisiana Oil and Gas

Louisiana Wildcats

Louisiana Offshore (Wildcats included)

	Nov 22	Oct 22	Nov 21
Louisiana Natural Gas ^D (\$/MMBTU)	5.00	5.56	4.95
NYMEX Henry Hub Last Settle Gas Price ^B (\$/MMBTU)	5.37	5.68	5.02
Louisiana Sweet Crude - St. James ^B (\$/Barrel)	88.41	89.72	79.42
	Oct 22	Sep 22	Oct 21
North Louisiana ^A	46	47	34
South Louisiana Inland Waters ^A	0	0	1
South Louisiana Inland ^A	7	5	1
Louisiana State Offshore	0	0	0
Louisiana Federal OCS Offshore	12	14	11
Total Louisiana ^A (OCS included)	65	66	47
	Oct 22	Sep 22	Oct 21
Louisiana Crude Oil & Condensate (MMB)	3.6 ¹	3.4 ¹	2.4 ²
Louisiana Natural Gas & Casinghead (BCF)	310.5 ¹	292.8 ¹	301.2 ²
	Oct 22	Sep 22	Oct 21
Total Louisiana Oil and Gas	71	70	51
Louisiana Wildcats	0	0	0
Louisiana Offshore (Wildcats included)	2	0	0

