

# Louisiana Energy Facts

**INSIDE THIS ISSUE:**

Highlights  
page 1

Louisiana Monthly  
Natural gas &  
Casinghead Production  
page 1

Current Oil & Gas Data  
page 2

Louisiana Royalty and  
Severance Tax  
Revenue by Source  
page 3

Quick Facts  
page 4



Department of Natural  
Resources  
*Thomas Harris, Secretary*

Technology Assessment  
Division  
*Jason Lanolos, Director*  
*Edward O'Brien, Economist*

617 North Third Street Baton  
Rouge, LA 70802

Tel. (225) 342-1270 Fax.  
(225) 242-1397 Email:

techasmt@la.gov  
www.dnr.louisiana.gov/tad

## Highlights

West Texas Intermediate (WTI) crude oil spot price is over \$80 per barrel. On July 31, 2023, WTI settled at \$81.80 per barrel. The recent EIA forecasts expects WTI prices to average around the \$80 per barrel for the rest of 2023. Brent crude prices are expected to

have a premium as compared to WTI prices, averaging \$86 for the rest of 2023. The EIA has a slight upwards outlook for the end of 2023, with the second half of the year's price rising marginally, but production to increase throughout the rest of

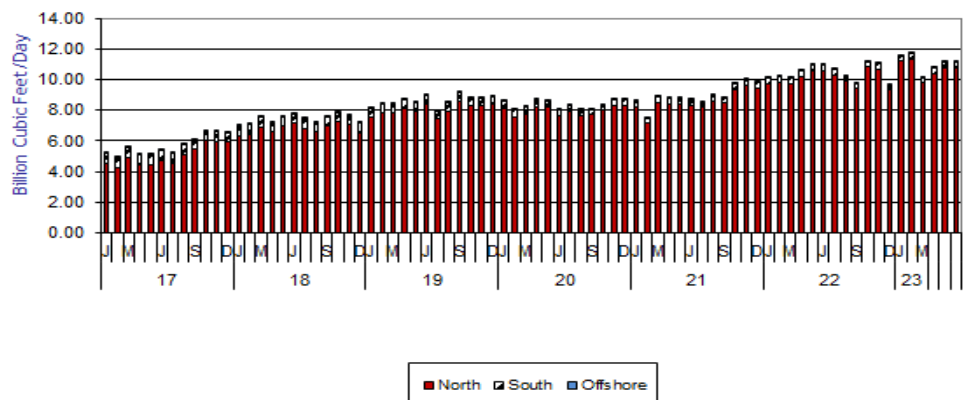
## August 2023

2023 and 2024. Uncertainty dealing with supply from the Middle East and Eastern Europe, and ultimately price, could put upwards pressure on prices in early 2024.

### Louisiana Natural Gas & Casinghead Production Excluding Federal OCS (Billion Cubic Feet/Day)

Month							% Change	
	2018	2019	2020	2021	2022	2023	21/22	22/23
January	7.00	8.19	8.65	8.60	10.12	11.53		13.86%
February	7.11	8.48	8.03	7.52	10.17	11.67		14.76%
March	7.56	8.46	8.24	8.85	10.13	10.09		-0.47%
April	7.23	8.70	8.72	8.80	10.59	10.81		2.05%
May	7.63	8.51	8.66	8.77	10.96	11.18		2.01%
June	7.81	8.98	8.06	8.71	10.93	11.15		2.02%
July	7.49	7.92	8.36	8.57	10.70		24.80%	
August	7.26	8.50	8.03	8.98	10.23		13.88%	
September	7.63	9.15	8.06	8.81	9.74		10.56%	
October	7.86	8.85	8.33	9.72	11.19		15.17%	
November	7.68	8.86	8.69	10.01	11.04		10.29%	
December	7.19	8.92	8.72	9.81	9.68		-1.35%	
<b>Year Average</b>	<b>5.74</b>	<b>7.45</b>	<b>7.61</b>	<b>8.93</b>	<b>10.46</b>	<b>11.07</b> **		

\*\* Partial Year



## Current Oil &amp; Gas Data

Louisiana DNR Technology Assessment Division

**PRODUCTION**GOM CENTRAL FEDERAL OFFSHORE <sup>F</sup> (OCS)

Crude Oil &amp; Condensate (MMB)

Natural Gas &amp; Casinghead (BCF)

THE UNITED STATES TOTAL

Crude Oil & Condensate <sup>C</sup> (MMB)Natural Gas & Casinghead <sup>C</sup> (BCF)**IMPORTS**U.S. Crude Oil <sup>C</sup> (MMB)U.S. Natural Gas <sup>C</sup> (BCF)**BAKER HUGHES RIG COUNTS**U.S. Gas <sup>A</sup>U.S. Oil <sup>A</sup>U.S. Offshore <sup>A</sup>U.S. Total <sup>A</sup>**PRICES**

CRUDE OIL (\$/barrel)

OPEC Average <sup>C</sup> (F.O.B.)U.S. Imports Average <sup>C</sup> (F.O.B.)U.S. Wellhead Average <sup>C</sup>Gulf OCS Wellhead Average <sup>C</sup>State Severance Wellhead Average <sup>E</sup>

NATURAL GAS (\$/MCF)

U.S. City Gates Average <sup>C</sup>U.S. Imports Average <sup>C</sup> (F.O.B.)U.S. Spot Market Average <sup>D</sup>

State Royalty Wellhead Average

NYMEX Henry Hub End of the Month Settle Gas Price <sup>B</sup> (\$/MMBTU)

	FEB 23	JAN 23	DEC 22	FEB 22
GOM CENTRAL FEDERAL OFFSHORE <sup>F</sup> (OCS)				
Crude Oil & Condensate (MMB)	49	56	53	44
Natural Gas & Casinghead (BCF)	58	66	61	54
THE UNITED STATES TOTAL				
Crude Oil & Condensate <sup>C</sup> (MMB)	350	388	377	317
Natural Gas & Casinghead <sup>C</sup> (BCF)	2,842	3,141	3,328	2,856
<b>IMPORTS</b>				
U.S. Crude Oil <sup>C</sup> (MMB)	185	195	186	172
U.S. Natural Gas <sup>C</sup> (BCF)	244	275	293	259
<b>BAKER HUGHES RIG COUNTS</b>				
U.S. Gas <sup>A</sup>	153	155	155	121
U.S. Oil <sup>A</sup>	606	618	625	515
U.S. Offshore <sup>A</sup>	16	16	16	16
U.S. Total <sup>A</sup>	758	773	780	636
<b>PRICES</b>				
CRUDE OIL (\$/barrel)				
OPEC Average <sup>C</sup> (F.O.B.)	78.29	81.18	84.75	96.80
U.S. Imports Average <sup>C</sup> (F.O.B.)	60.58	62.68	64.87	87.62
U.S. Wellhead Average <sup>C</sup>	74.32	75.71	76.45	91.37
Gulf OCS Wellhead Average <sup>C</sup>	73.62	73.73	78.07	86.55
State Severance Wellhead Average <sup>E</sup>	93.21	77.87	66.89	70.05
NATURAL GAS (\$/MCF)				
U.S. City Gates Average <sup>C</sup>	5.51	7.11	7.68	5.78
U.S. Imports Average <sup>C</sup> (F.O.B.)	5.17	8.49	9.75	5.62
U.S. Spot Market Average <sup>D</sup>	5.30	7.38	15.59	5.05
State Royalty Wellhead Average	2.61	3.79	3.72	4.81
NYMEX Henry Hub End of the Month Settle Gas Price <sup>B</sup> (\$/MMBTU)	3.23	4.90	6.71	6.27

**Key**

1	Estimated	<b>MCF</b>	Thousand Cubic Feet
2	Revised	<b>MMB</b>	Million Barrels
<b>BCF</b>	Billion Cubic Feet	<b>N/A</b>	Not Available
<b>BTU</b>	British Thermal Unit	<b>OCS</b>	Outer Continental Shelf
<b>F.O.B</b>	Free on Board	<b>MMBTU</b>	Million British Thermal Units

**Data Sources**

<b>A</b>	Oil & Gas Journal	<b>D</b>	Natural Gas Week
<b>B</b>	Wall Street Journal	<b>E</b>	LA Dept of Revenue
<b>C</b>	U. S. Dept. of Energy	<b>F</b>	BOEM

**Note:** Unless otherwise specified, data is from the Louisiana Department of Natural Resources and excludes Federal OCS.

**Note from the Editors**

**Louisiana Energy Facts** is published monthly by the Louisiana Department of Natural Resources, Technology Assessment Division as a public service to individuals interested in Louisiana energy activities. Content includes recent oil, gas and other energy statistics and a brief analysis of current trends.

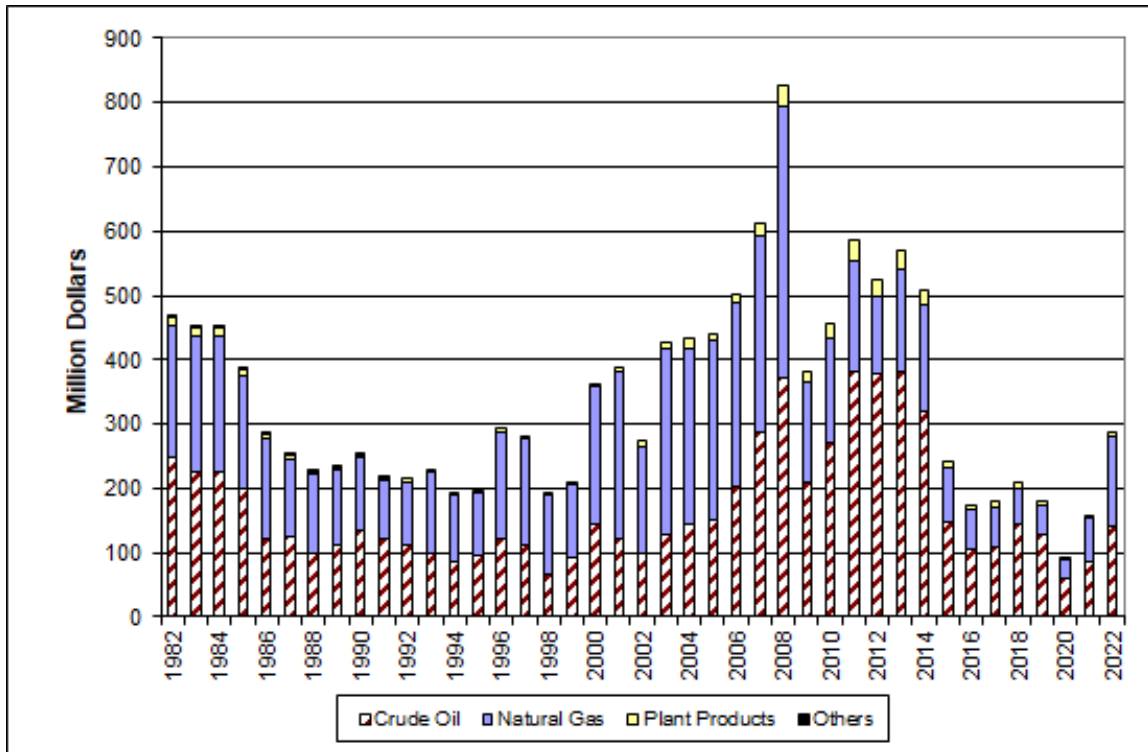
**Louisiana Energy Facts** articles provide insight and information on subjects of special interest to our readers, and may announce relevant, forthcoming publications.

These documents are available on the Louisiana Department of Natural Resources, Technology Assessment Division home page: <http://www.dnr.louisiana.gov/tad>. From the menu, select Newsletters. Our current online holdings include issues dating from 1998 through the present.

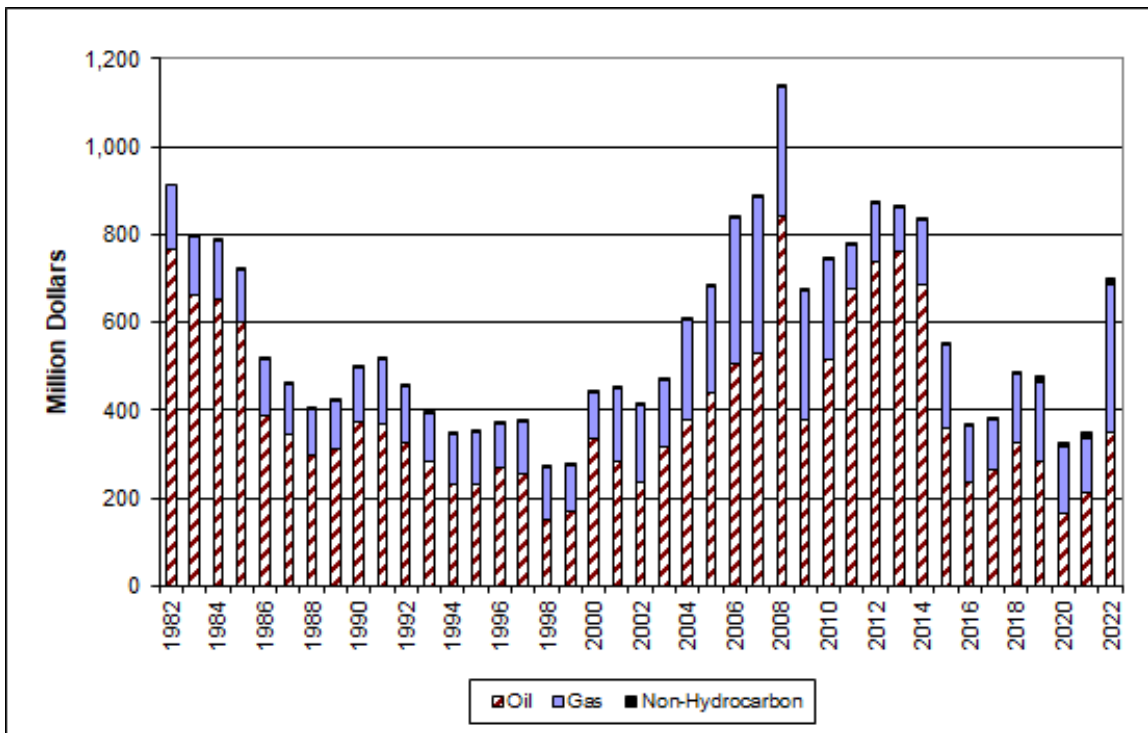
If the issue you are seeking is unavailable, please contact us.

To request notification of when the **Louisiana Energy Facts** is available online, contact us at [techasm@la.gov](mailto:techasm@la.gov) with your name, title, company name, email address, and phone number. Please specify that you would like to be added to our email notification database for an electronic subscription.

## Louisiana Mineral Royalty Revenue by Source



## Louisiana Mineral Severance Tax Revenue by Source



## Quick Facts

## August 2023

Louisiana DNR Technology Assessment Division

**Department of Natural Resources**

*Thomas Harris, Secretary*

**Technology Assessment Division**

*Jason Lanclos, Director*  
*Edward O'Brien, Economist*

617 North Third Street  
Baton Rouge, LA 70802

Tel. (225) 342-1270 Fax.  
(225) 242-1397 Email:

[techasmt@la.gov](mailto:techasmt@la.gov)  
[www.dnr.louisiana.gov/tad](http://www.dnr.louisiana.gov/tad)

**SPOT MARKET PRICES**

Louisiana Natural Gas<sup>D</sup> (\$/MMBTU)  
NYMEX Henry Hub Last Settle Gas Price<sup>B</sup> (\$/MMBTU)  
Louisiana Sweet Crude - St. James<sup>B</sup> (\$/Barrel)

	Jul 23	Jun 23	Jul 22
Louisiana Natural Gas <sup>D</sup> (\$/MMBTU)	2.54	2.18	8.20
NYMEX Henry Hub Last Settle Gas Price <sup>B</sup> (\$/MMBTU)	2.55	2.18	7.26
Louisiana Sweet Crude - St. James <sup>B</sup> (\$/Barrel)	79.01	72.51	102.02

**BAKER HUGHES RIG COUNTS**

North Louisiana<sup>A</sup>  
South Louisiana Inland Waters<sup>A</sup>  
South Louisiana Inland<sup>A</sup>  
Louisiana State Offshore  
Louisiana Federal OCS Offshore  
Total Louisiana<sup>A</sup> (OCS included)

	Jun 23	May 23	Jun 22
North Louisiana <sup>A</sup>	28	33	46
South Louisiana Inland Waters <sup>A</sup>	1	1	3
South Louisiana Inland <sup>A</sup>	2	5	3
Louisiana State Offshore	1	0	0
Louisiana Federal OCS Offshore	17	19	15
Total Louisiana <sup>A</sup> (OCS included)	49	58	67

**PRODUCTION (State Jurisdiction Only)**

Louisiana Crude Oil & Condensate (MMB)  
Louisiana Natural Gas & Casinghead (BCF)

	Jun 23	May 23	Jun 22
Louisiana Crude Oil & Condensate (MMB)	3.0 <sup>1</sup>	3.5 <sup>1</sup>	3.1 <sup>2</sup>
Louisiana Natural Gas & Casinghead (BCF)	334.6 <sup>1</sup>	352.2 <sup>1</sup>	328.0 <sup>2</sup>

**DRILLING PERMITS (State Jurisdiction Only)**

Total Louisiana Oil and Gas  
Louisiana Wildcats  
Louisiana Offshore (Wildcats included)

	Jun 23	May 23	Jun 22
Total Louisiana Oil and Gas	43	52	78
Louisiana Wildcats	1	0	0
Louisiana Offshore (Wildcats included)	1	0	0

