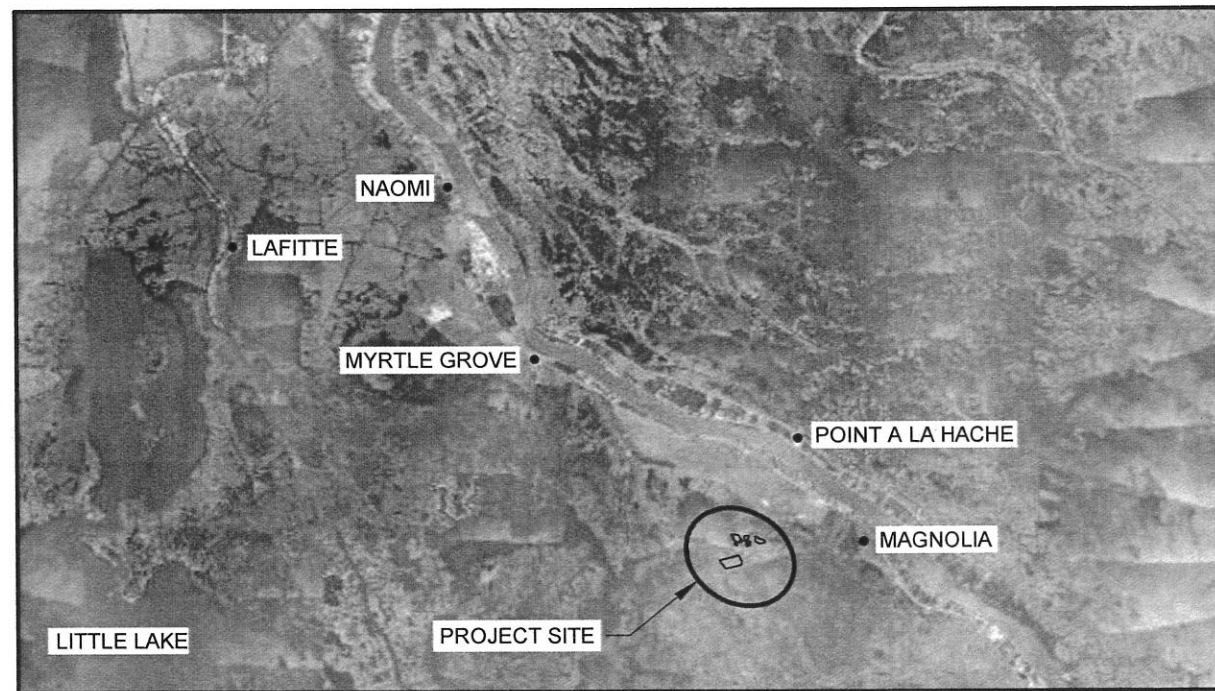
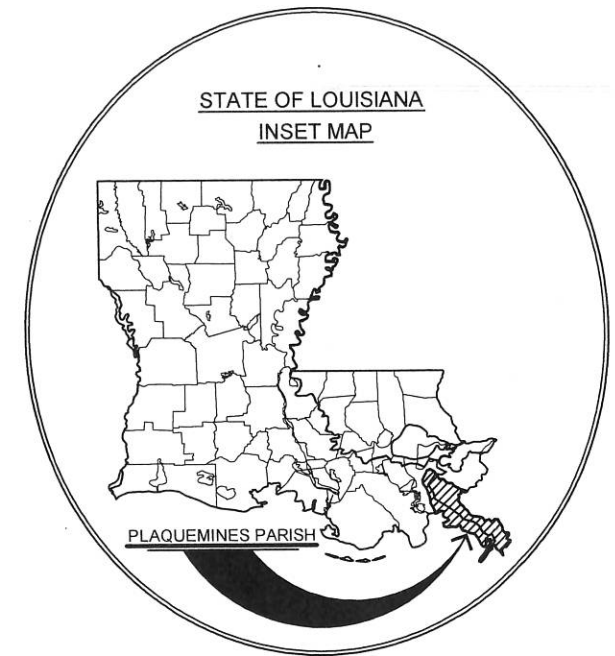


STATE OF LOUISIANA
COASTAL PROTECTION AND RESTORATION AUTHORITY

INDEX TO SHEETS

SHEET NO.	DESCRIPTION
1	TITLE SHEET
2	GENERAL NOTES
3	PROJECT LAYOUT
4	TYPICAL SECTIONS & PLANTING DETAILS

NRDA LAKE HERMITAGE MARSH CREATION INCR. 2
VEGETATIVE PLANTINGS PROJECT
BA-141
PLAQUEMINES PARISH



[Signature]
CHIEF, ENGINEERING DIVISION

[Signature]
ENGINEER MANAGER

[Signature]
ENGINEER SUPERVISOR

[Signature]
PROJECT ENGINEER

LICENSURE CLASSIFICATION REQUIREMENTS

MAJOR CATEGORY: HEAVY CONSTRUCTION
SUBCLASSIFICATION: LANDSCAPING, GRADING & BEAUTIFICATION

OR

MAJOR CATEGORY: SPECIALITY
SUBCLASSIFICATION: COASTAL RESTORATION & HABITAT ENHANCEMENT OR SEEDING, SODDING, LOAD & SOIL STABILIZATION, EROSION CONTROL, SHEET PILING

				COASTAL PROTECTION AND RESTORATION AUTHORITY 450 LAUREL STREET BATON ROUGE, LOUISIANA 70801	NRDA LAKE HERMITAGE MARSH CREATION INCR. 2 VEGETATIVE PLANTINGS PROJECT	TITLE SHEET
					STATE PROJECT NUMBER: BA-141 FEDERAL PROJECT NUMBER: N/A	DATE: JANUARY 2015
REV.	DATE	DESCRIPTION	BY	DRAWN BY: SHANE FAUST	DESIGNED BY: SHANE FAUST	APPROVED BY: SHANNON HAYNES, P.E.
						SHEET 1 OF 4

GENERAL NOTES

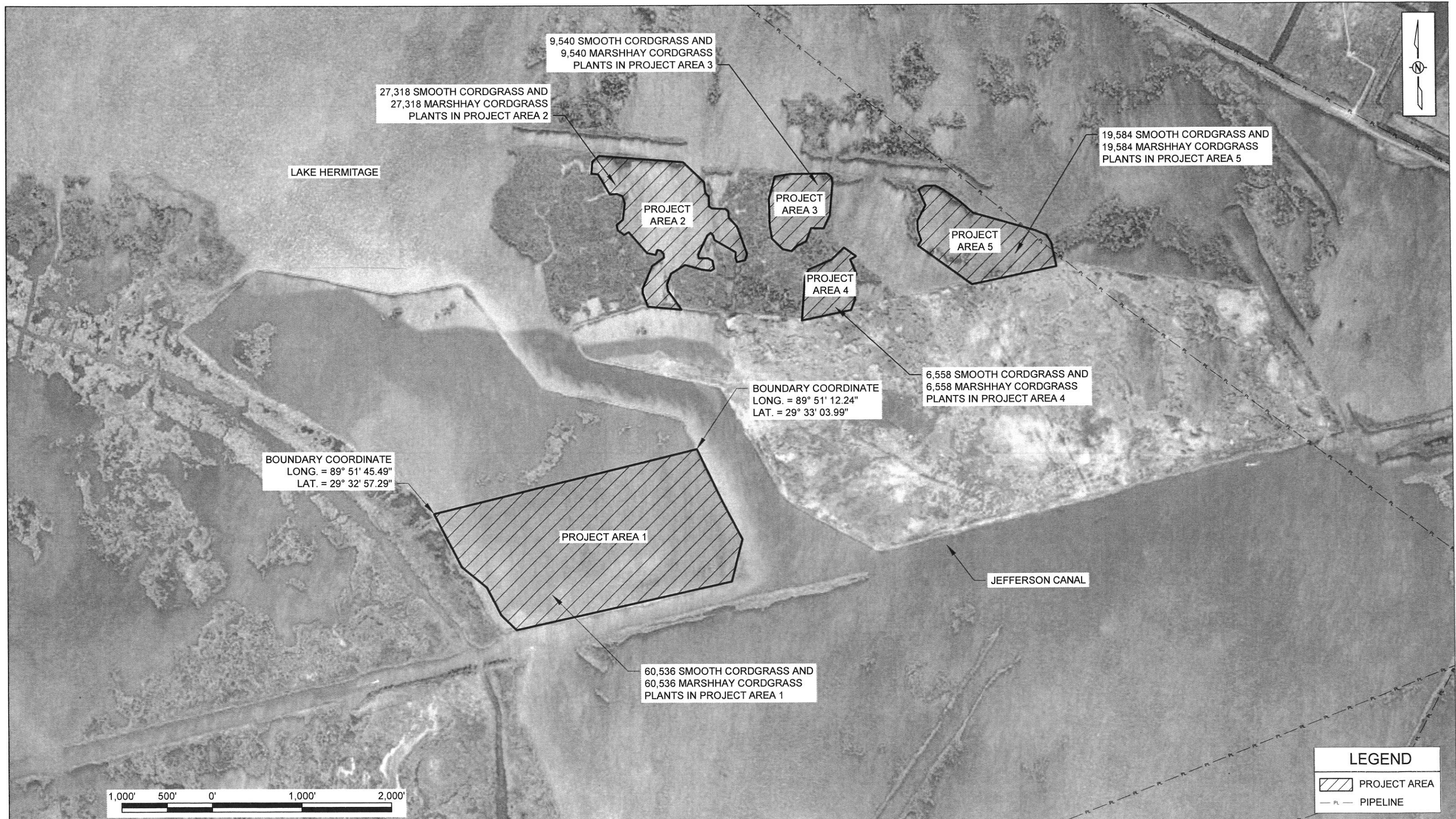
1. PLANS AND SPECIFICATIONS ARE COMPLEMENTARY; WHAT IS REQUIRED BY ONE IS BINDING AS IF REQUIRED BY ALL. CLARIFICATIONS AND INTERPRETATIONS OF, OR NOTIFICATIONS OF MINOR VARIATIONS AND DEVIATIONS IN THE CONTRACT DOCUMENTS, WILL BE ISSUED BY THE ENGINEER, IF NECESSARY.
2. EXACT LOCATION OF ALL PLANTS SHALL BE DETERMINED ON SITE BY THE ENGINEER DURING PRE-CONSTRUCTION LAYOUT.
3. ALL DISTANCE MEASUREMENTS SHOWN ON THE PLANS ARE APPROXIMATE.
4. NO EQUIPMENT MAY ALTER THE EXISTING CONDITIONS OF THE NEWLY CREATED MARSH PLATFORM OR DISTURB EXISTING VEGETATION.
5. ANY DAMAGE TO EXISTING U.S. COAST GUARD NAVIGATION AIDS OR PRIVATE NAVIGATION AIDS SHALL BE REPAIRED BY THE CONTRACTOR TO U.S. COAST GUARD STANDARDS AT THE EXPENSE OF THE CONTRACTOR.
6. MEAN HIGH WATER (MHW) AND MEAN LOW WATER (MLW) ARE CALCULATED FROM THE LDNR GAGE BA04-17 LOCATED NEAR POINTE A LA HACHE, LA. ELEVATIONS ARE REFERENCED TO NAVD 88, US FEET.
7. ALL EQUIPMENT SHALL BE FLOATING AT ALL TIMES DURING TRANSIT TO AND FROM THE PROJECT SITE

SUMMARY OF ESTIMATED QUANTITIES

REF. NO.	DESCRIPTION	UNIT	ESTIMATED QUANTITY
1	MARSHHAY CORDGRASS FOUR-INCH CONTAINER	EACH	123,536
2	SMOOTH CORDGRASS PLUGS	EACH	123,536

QUANTITIES SHOWN ARE FOR BID PURPOSES ONLY AND WERE CALCULATED ACCORDING TO CONDITIONS SURVEYED IN OCTOBER 2010. THE OWNER RESERVES THE RIGHT TO ADJUST QUANTITIES HIGHER OR LOWER WITHOUT ADJUSTMENT OF THE UNIT PRICE.

				COASTAL PROTECTION AND RESTORATION AUTHORITY <small>450 LAUREL STREET BATON ROUGE, LOUISIANA 70801</small>	NRDA LAKE HERMITAGE MARSH CREATION INCR. 2 VEGETATIVE PLANTINGS PROJECT	GENERAL NOTES	
					STATE PROJECT NUMBER: BA-141		
					FEDERAL PROJECT NUMBER: N/A	DATE: JANUARY 2015	
					DRAWN BY: SHANE FAUST	DESIGNED BY: SHANE FAUST	APPROVED BY: SHANNON HAYNES, P.E.
REV.	DATE	DESCRIPTION	BY				SHEET 2 OF 4



NOTES:

1. BACK IMAGERY WAS TAKEN IN OCTOBER 2013.
2. EXACT LOCATIONS OF PLANTS SHALL BE DETERMINED ON SITE BY THE ENGINEER DURING PRE-CONSTRUCTION LAYOUT.
3. NO EQUIPMENT MAY ALTER THE EXISTING CONDITIONS OF THE MARSH OR DISTURB EXISTING VEGETATION.

REV.	DATE	DESCRIPTION	BY

COASTAL PROTECTION AND RESTORATION AUTHORITY
 450 LAUREL STREET
 BATON ROUGE, LOUISIANA 70801

DRAWN BY: SHANE FAUST DESIGNED BY: SHANE FAUST

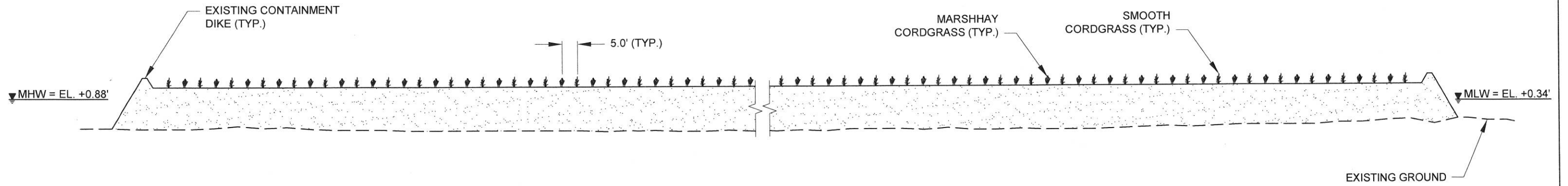
NRDA LAKE HERMITAGE
 MARSH CREATION INCR. 2
 VEGETATIVE PLANTINGS PROJECT

STATE PROJECT NUMBER: BA-141
 FEDERAL PROJECT NUMBER: N/A

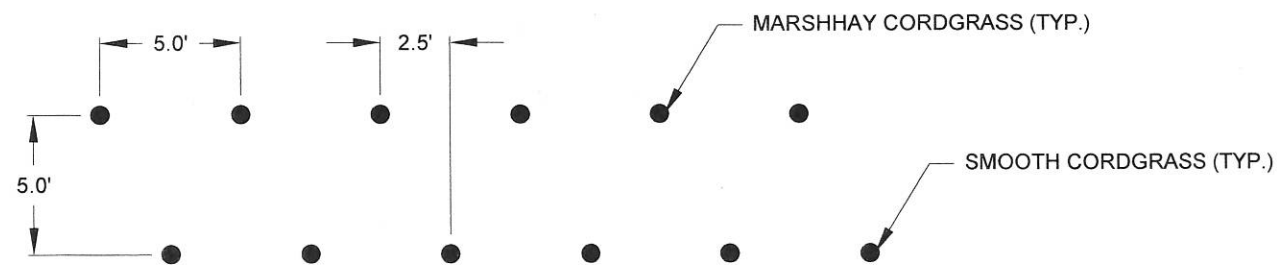
APPROVED BY: SHANNON HAYNES, P.E.

PROJECT LAYOUT

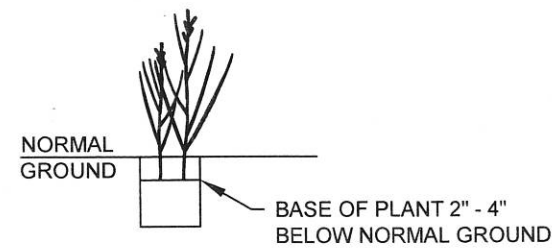
DATE: JANUARY 2015
 SHEET 3 OF 4



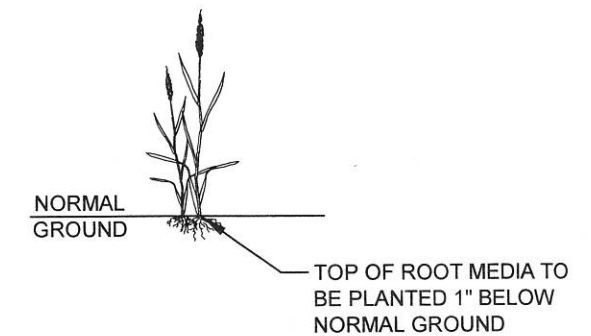
TYPICAL SECTION
NTS



TYPICAL PLAN
PLANTING LAYOUT



TYPICAL DETAIL
MARSHHAY CORDGRASS
4" CONTAINER



TYPICAL DETAIL
SMOOTH CORDGRASS
PLUG

NOTES:

- ALL PLANTS SHALL BE PLANTED ON FIVE (5) FOOT CENTERS WITH ROWS FIVE (5) FOOT APART. MARSHHAY CORDGRASS AND SMOOTH CORDGRASS PLUG ROWS WILL BE ALTERNATED DURING INSTALLATION.
- LOCATIONS OF PLANT ROWS ARE APPROXIMATE. SPECIES LOCATIONS ARE SUBJECT TO CHANGE DUE TO SITE CONDITIONS AND/OR CONSTRUCTION VARIABLES.

REV.	DATE	DESCRIPTION	BY

COASTAL PROTECTION AND
RESTORATION AUTHORITY

450 LAUREL STREET
BATON ROUGE, LOUISIANA 70801

DRAWN BY: SHANE FAUST

DESIGNED BY: SHANE FAUST

NRDA LAKE HERMITAGE
MARSH CREATION INCR. 2
VEGETATIVE PLANTINGS PROJECT

STATE PROJECT NUMBER: BA-141

FEDERAL PROJECT NUMBER: N/A

APPROVED BY: SHANNON HAYNES, P.E.

TYPICAL SECTION &
PLANTING DETAILS

DATE: JANUARY 2015

SHEET 4 OF 4