

# LOUISIANA ENERGY FACTS

Louisiana Department of Natural Resources  
Technology Assessment Division

www.dnr.louisiana.gov/tad

## INSIDE

**Highlights**  
page 1

**Louisiana Crude Oil & Condensate Production**  
page 1

**Current Oil & Gas Data**  
page 2

**Louisiana Crude Oil and Condensate Production**  
page 3

**Louisiana Natural Gas and Casinghead Gas Production**  
page 3

**Quick Facts**  
page 4

**Featured Articles and Inserts**  
[Nuclear Power Generation Update](#)

[A Residential Wind Power Project in Louisiana](#)



Department of Natural Resources  
**Scott A. Angelle**, Secretary

Technology Assessment Division  
**T. Michael French**, Director  
**Manuel Lam**, Senior Analyst

617 North Third Street  
Baton Rouge, LA 70802

Tel. (225) 342-1270  
Fax. (225) 242-1397  
Email: [techasmt@la.gov](mailto:techasmt@la.gov)  
[www.dnr.louisiana.gov/tad](http://www.dnr.louisiana.gov/tad)

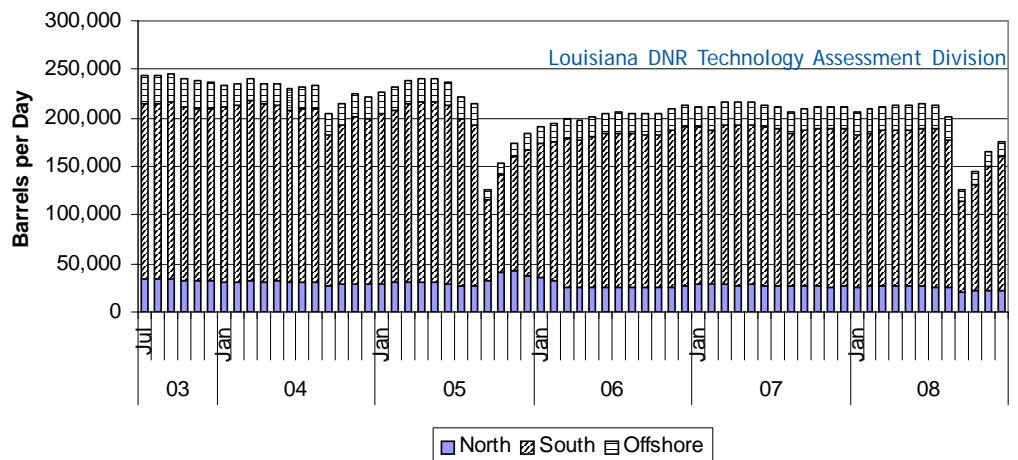
## Highlights JANUARY 2009

Natural gas prices ended lower in 2008. Despite reaching historically high levels of \$13.31 per MMBTU in July 2008, the December gas spot price was \$6.08 per MMBTU. It had decreased \$7.23 per MMBTU, or 54 percent, since the July peak, and it was lower than the January 2008 price by \$1.70, or 22 percent. The volatility in natural gas prices reflected the rapidly changing markets for crude oil and energy products. The reduced price was the result of improved outlook for supplies from domestic production at unconventional fields and lower demand from the slowing economy. DOE/EIA reported that, in the first 9 months of 2008, domestic production increased 7.2 percent in comparison with the same period in 2007. Production increased even though some production was shut-in as a result of the hurricanes in September.

### Louisiana Crude Oil & Condensate Production\*\*, Excluding Federal OCS

| Month               | (Barrels/Day)  |                |                |                |                |                            | % Change 07/08 |
|---------------------|----------------|----------------|----------------|----------------|----------------|----------------------------|----------------|
|                     | 2003           | 2004           | 2005           | 2006           | 2007           | 2008                       |                |
| January             | 249,840        | 233,632        | 226,993        | 191,443        | 211,364        | 206,338 <sup>2</sup>       | -2.38%         |
| February            | 255,112        | 235,607        | 232,006        | 194,061        | 211,473        | 209,546 <sup>2</sup>       | -0.91%         |
| March               | 256,525        | 240,406        | 238,200        | 199,608        | 216,354        | 211,557 <sup>2</sup>       | -2.22%         |
| April               | 258,504        | 236,065        | 241,141        | 198,345        | 215,924        | 213,397 <sup>2</sup>       | -1.17%         |
| May                 | 254,300        | 235,448        | 240,452        | 200,913        | 215,771        | 212,783 <sup>2</sup>       | -1.38%         |
| June                | 250,804        | 230,497        | 236,110        | 204,916        | 213,158        | 214,690 <sup>2</sup>       | 0.72%          |
| July                | 243,801        | 231,724        | 222,435        | 205,773        | 210,770        | 213,644                    | 1.36%          |
| August              | 244,325        | 233,006        | 214,431        | 205,344        | 206,661        | 201,190                    | -2.65%         |
| September           | 244,728        | 203,870        | 126,657        | 204,252        | 208,888        | 126,363 <sup>1</sup>       | -39.51%        |
| October             | 239,652        | 215,554        | 153,099        | 204,051        | 211,695        | 145,522 <sup>1</sup>       | -31.26%        |
| November            | 238,598        | 224,953        | 174,047        | 210,243        | 211,038        | 165,594 <sup>1</sup>       | -21.53%        |
| December            | 236,810        | 222,396        | 183,266        | 212,485        | 211,251        | 175,730 <sup>1</sup>       | -16.81%        |
| <b>Year Average</b> | <b>247,750</b> | <b>228,597</b> | <b>207,403</b> | <b>202,620</b> | <b>212,029</b> | <b>191,363<sup>1</sup></b> | <b>-9.75%</b>  |

\*\*All data are revised; see July 2001 statistic changes explanation



## Current Oil & Gas Data

Louisiana DNR Technology Assessment Division

| <b>PRODUCTION</b>   | <b>JUL 08</b>    | <b>JUN 08</b>      | <b>MAY 08</b>      | <b>JUL 07</b>      |
|---|------------------|--------------------|--------------------|--------------------|
| LOUISIANA FEDERAL OFFSHORE (OCS)  |                  |                    |                    |                    |
| Crude Oil & Condensate <sup>C</sup> (MMB)                                 | 37 <sup>1</sup>  | 34 <sup>1</sup>    | 35 <sup>1</sup>    | 36 <sup>1</sup>    |
| Natural Gas & Casinghead <sup>C</sup> (BCF)                               | 145 <sup>1</sup> | 149 <sup>1</sup>   | 152 <sup>1</sup>   | 173 <sup>1</sup>   |
| THE UNITED STATES TOTAL   |                  |                    |                    |                    |
| Crude Oil & Condensate <sup>C</sup> (MMB)                                 | 158              | 153                | 160                | 159                |
| Natural Gas & Casinghead <sup>C</sup> (BCF)                               | 1,787            | 1,715              | 1,734              | 1,643 <sup>2</sup> |
| <b>IMPORTS</b>  |                  |                    |                    |                    |
| U.S. Crude Oil <sup>C</sup> (MMB)   | 313              | 300                | 299                | 308 <sup>2</sup>   |
| U.S. Natural Gas <sup>C</sup> (BCF)                                       | 313              | 283 <sup>2</sup>   | 292                | 419 <sup>2</sup>   |
| <b>BAKER HUGHES RIG COUNTS</b>  |                  |                    |                    |                    |
| U.S. Gas <sup>A</sup>   | 1,543            | 1,510              | 1,478              | 1,486              |
| U.S. Oil <sup>A</sup>   | 380              | 383                | 375                | 285                |
| U.S. Offshore <sup>A</sup>  | 67               | 67                 | 68                 | 78                 |
| U.S. Total <sup>A</sup>   | 1,932            | 1,902              | 1,863              | 1,777              |
| <b>PRICES</b>   |                  |                    |                    |                    |
| CRUDE OIL (\$/barrel)   |                  |                    |                    |                    |
| OPEC Average <sup>C</sup> (F.O.B.)  | 121.93           | 126.49             | 118.23             | 72.04 <sup>2</sup> |
| U.S. Imports Average <sup>C</sup> (F.O.B.)                                | 122.12           | 123.62             | 115.02             | 69.30 <sup>2</sup> |
| U.S. Wellhead Average <sup>C</sup>  | 128.08           | 127.47             | 118.55             | 69.23              |
| Gulf OCS Wellhead Average <sup>C</sup>                                    | 130.06           | 125.90             | 114.81             | 70.21 <sup>2</sup> |
| State Severance Wellhead Average <sup>E</sup>                             | 124.51           | 111.80             | 102.10             | 62.38              |
| NATURAL GAS (\$/MCF)  |                  |                    |                    |                    |
| U.S. City Gates Average <sup>C</sup>                                      | 12.39            | 11.73              | 10.97              | 7.95 <sup>2</sup>  |
| U.S. Imports Average <sup>C</sup> (F.O.B.)                                | N/A              | 11.71 <sup>2</sup> | 10.80 <sup>2</sup> | 6.56 <sup>2</sup>  |
| U.S. Wellhead Average <sup>C</sup>  | 10.62            | 10.82              | 9.81               | 6.19               |
| State Royalty Wellhead Average  | 12.62            | 8.69 <sup>2</sup>  | 12.14              | 6.88 <sup>2</sup>  |
| NYMEX Henry Hub End of the Month Settle Gas Price <sup>B</sup> (\$/MMBTU) | 13.11            | 11.92              | 11.28              | 6.93               |

### Key

### Data Sources

|               |                      |              |                               |   |                       |          |                    |
|---------------|----------------------|--------------|-------------------------------|---|-----------------------|----------|--------------------|
| <b>1</b>      | Estimated            | <b>MCF</b>   | Thousand Cubic Feet           | <b>A</b>  | Oil & Gas Journal     | <b>D</b> | Natural Gas Week   |
| <b>2</b>      | Revised              | <b>MMB</b>   | Million Barrels               | <b>B</b>  | Wall Street Journal   | <b>E</b> | LA Dept of Revenue |
| <b>BCF</b>    | Billion Cubic Feet   | <b>NA</b>    | Not Available                 | <b>C</b>  | U. S. Dept. of Energy |          |                    |
| <b>BTU</b>    | British Thermal Unit | <b>OCS</b>   | Outer Continental Shelf       | <b>Note:</b> Unless otherwise specified, data is from the Louisiana Department of Natural Resources and excludes Federal OCS. |                       |          |                    |
| <b>F.O.B.</b> | Free on Board        | <b>MMBTU</b> | Million British Thermal Units |   |                       |          |                    |

### Note from the Editors

*Louisiana Energy Facts* is published monthly by the Louisiana Department of Natural Resources, Technology Assessment Division as a public service to individuals interested in Louisiana energy activities. Content includes recent oil, gas and other energy statistics and a brief analysis of current trends.

*Louisiana Energy Facts* articles provide insight and information on subjects of special interest to our readers, and may announce relevant, forthcoming publications.

These documents are available on the Louisiana Department of Natural Resources, Technology Assessment Division home page: <http://www.dnr.louisiana.gov/tad>. From the menu, select **Energy Data & Reports**; choose **Louisiana Energy Facts Newsletter**. Our current online holdings include issues dating from 1998 through the present. If the issue you are seeking is unavailable, please contact us.

**To request a subscription or update your mailing address**, contact us with your information. Please specify print or electronic subscription. **We value your feedback.** Please send your comments and suggestions for improving and enhancing the newsletter to: [techasmt@la.gov](mailto:techasmt@la.gov).

## Louisiana Crude Oil and Condensate Production, Excluding Federal OCS (Barrels)

Louisiana DNR Technology Assessment Division

| <u>YEAR</u> | <u>NORTH</u>            | <u>SOUTH</u>            | <u>OFFSHORE</u>        | <u>TOTAL</u>            |
|-------------|-------------------------|-------------------------|------------------------|-------------------------|
| 1989        | 25,229,350              | 105,119,808             | 22,747,097             | 153,096,255             |
| 1990        | 26,022,976              | 99,649,083              | 23,042,907             | 148,714,966             |
| 1991        | 26,702,911              | 95,794,803              | 24,183,667             | 146,681,381             |
| 1992        | 25,702,774              | 93,681,430              | 23,421,660             | 142,805,864             |
| 1993        | 23,736,207              | 90,934,698              | 23,222,361             | 137,893,266             |
| 1994        | 20,963,310              | 83,505,726              | 22,660,992             | 127,130,028             |
| 1995        | 20,571,849              | 82,339,060              | 22,318,475             | 125,229,384             |
| 1996        | 22,063,110              | 85,465,942              | 21,430,471             | 128,959,522             |
| 1997        | 21,497,315              | 84,706,090              | 19,951,782             | 126,155,187             |
| 1998        | 19,570,475              | 85,190,830              | 17,520,419             | 122,281,725             |
| 1999        | 16,459,365              | 80,068,828              | 14,331,807             | 110,860,000             |
| 2000        | 15,411,033              | 78,303,428              | 13,471,159             | 107,185,619             |
| 2001        | 14,572,344              | 77,604,090              | 12,694,467             | 104,870,901             |
| 2002        | 12,705,988              | 70,384,416              | 10,584,096             | 93,674,501              |
| 2003        | 12,258,578              | 67,539,163              | 10,607,266             | 90,405,007              |
| 2004        | 11,103,745              | 64,324,530              | 8,243,044              | 83,671,319              |
| 2005        | 11,786,972 <sup>2</sup> | 56,569,486 <sup>2</sup> | 7,323,502 <sup>2</sup> | 75,679,960 <sup>2</sup> |
| 2006        | 9,954,343 <sup>2</sup>  | 56,363,123 <sup>2</sup> | 7,657,051 <sup>2</sup> | 73,974,517 <sup>2</sup> |
| 2007        | 10,028,102 <sup>2</sup> | 59,217,831 <sup>2</sup> | 8,145,387 <sup>2</sup> | 77,391,320 <sup>2</sup> |
| 2008        | 9,101,688 <sup>1</sup>  | 53,149,313 <sup>1</sup> | 7,796,794 <sup>1</sup> | 70,047,795 <sup>1</sup> |

## Louisiana Natural Gas and Casinghead Gas Production, Excluding Federal OCS (MCF)

Louisiana DNR Technology Assessment Division

| <u>YEAR</u> | <u>NORTH</u>             | <u>SOUTH</u>             | <u>OFFSHORE</u>          | <u>TOTAL</u>               |
|-------------|--------------------------|--------------------------|--------------------------|----------------------------|
| 1989        | 379,189,370              | 1,130,650,385            | 203,309,753              | 1,713,149,508              |
| 1990        | 390,417,542              | 1,137,642,094            | 182,032,816              | 1,710,092,452              |
| 1991        | 381,973,751              | 1,116,875,275            | 149,894,021              | 1,648,743,048              |
| 1992        | 372,216,566              | 1,124,375,499            | 146,989,475              | 1,643,581,540              |
| 1993        | 353,811,255              | 1,104,823,534            | 153,838,456              | 1,612,473,245              |
| 1994        | 354,055,756              | 1,027,648,900            | 155,207,250              | 1,536,911,906              |
| 1995        | 363,431,067              | 1,008,307,077            | 164,448,886              | 1,536,187,030              |
| 1996        | 417,151,690              | 1,027,433,122            | 185,614,368              | 1,630,199,180              |
| 1997        | 442,021,019              | 975,799,433              | 185,843,498              | 1,603,663,950              |
| 1998        | 437,378,918              | 960,351,429              | 179,648,787              | 1,577,379,135              |
| 1999        | 394,191,456              | 910,642,297              | 149,598,802              | 1,454,432,555              |
| 2000        | 387,908,953              | 926,934,907              | 149,432,158              | 1,464,276,018              |
| 2001        | 389,509,659              | 954,712,708              | 151,044,585              | 1,495,266,953              |
| 2002        | 352,080,114              | 874,820,792              | 134,961,175              | 1,361,862,080              |
| 2003        | 343,400,285              | 871,572,716              | 130,378,397              | 1,345,351,398              |
| 2004        | 329,716,833              | 893,509,528              | 126,674,684              | 1,349,901,045              |
| 2005        | 412,810,617 <sup>2</sup> | 766,513,062 <sup>2</sup> | 104,086,979 <sup>2</sup> | 1,284,853,091 <sup>2</sup> |
| 2006        | 355,533,248 <sup>2</sup> | 898,798,340 <sup>2</sup> | 94,332,346 <sup>2</sup>  | 1,349,819,887 <sup>2</sup> |
| 2007        | 330,429,114 <sup>2</sup> | 936,376,600 <sup>2</sup> | 88,018,277 <sup>2</sup>  | 1,353,918,237 <sup>2</sup> |
| 2008        | 318,592,104 <sup>1</sup> | 884,556,161 <sup>1</sup> | 85,127,709 <sup>1</sup>  | 1,288,593,864 <sup>1</sup> |

This issue of *Louisiana Energy Facts* is funded 100% (\$1,078) with Petroleum Violation Escrow funds as part of the State Energy Program as approved by the U.S. Department of Energy and Department of Natural Resources. This public document was published at a total cost of \$1,078. 1,041 copies of this public document were published in this first printing at a total cost of \$1,078. The total cost of all printing of this document, including reprints, is \$1,078. This document was published by the Department of Natural Resources, P.O. Box 94396, Baton Rouge, LA 70804-9396 to promulgate the State Energy Program developed under authority of P.L. 94-163. This material was printed in accordance with the standards for printing by State agencies established pursuant to R.S. 43:31.



LOUISIANA DEPARTMENT OF NATURAL RESOURCES  
 Technology Assessment Division  
 P. O. Box 94396  
 Baton Rouge, LA 70804-9396

PRST STD  
 U.S. POSTAGE  
**PAID**  
 BATON ROUGE, LA  
 PERMIT NO. 936

## ADDRESS SERVICE REQUESTED

### INSIDE

Highlights  
 page 1

Louisiana Crude Oil &  
 Condensate Production  
 page 1

Current Oil & Gas Data  
 page 2

Louisiana Crude Oil and  
 Condensate Production  
 page 3

Louisiana Natural Gas  
 and Casinghead  
 Gas Production  
 page 3

Quick Facts  
 page 4

Featured Articles  
 and Inserts  
 Nuclear Power  
 Generation Update

A Residential Wind  
 Power Project in  
 Louisiana

## Quick Facts

## JANUARY 2009

Louisiana DNR Technology Assessment Division

### SPOT MARKET PRICES

|   | Dec 08 | Nov 08 | Dec 07 |
|---|--------|--------|--------|
| Louisiana Natural Gas <sup>D</sup> (\$/MMBTU)                 | 6.08   | 6.51   | 7.11   |
| NYMEX Henry Hub Last Settle Gas Price <sup>B</sup> (\$/MMBTU) | 7.20   | 6.47   | 7.20   |
| Louisiana Sweet Crude - St. James <sup>B</sup> (\$/Barrel)    | 43.72  | 56.74  | 95.32  |

### BAKER HUGHES RIG COUNTS

|   | Nov 08 | Oct 08 | Nov 07 |
|---|--------|--------|--------|
| North Louisiana <sup>A</sup>                | 95     | 82     | 61     |
| South Louisiana Inland Waters <sup>A</sup>  | 20     | 21     | 26     |
| South Louisiana Inland <sup>A</sup>         | 22     | 29     | 29     |
| Louisiana State Offshore                    | 3      | 2      | 1      |
| Louisiana Federal OCS Offshore              | 48     | 58     | 48     |
| Total Louisiana <sup>A</sup> (OCS included) | 188    | 192    | 165    |

### PRODUCTION (State Jurisdiction Only)

|  | Nov 08            | Oct 08            | Nov 07             |
|--|-------------------|-------------------|--------------------|
| Louisiana Crude Oil & Condensate (MMB)   | 5.0 <sup>1</sup>  | 4.5 <sup>1</sup>  | 6.3 <sup>2</sup>   |
| Louisiana Natural Gas & Casinghead (BCF) | 96.0 <sup>1</sup> | 97.2 <sup>1</sup> | 111.3 <sup>2</sup> |

### DRILLING PERMITS (State Jurisdiction Only)

|  | Nov 08 | Oct 08 | Nov 07 |
|--|--------|--------|--------|
| Total Louisiana Oil and Gas            | 117    | 172    | 180    |
| Louisiana Wildcats                     | 4      | 3      | 8      |
| Louisiana Offshore (Wildcats included) | 6      | 3      | 4      |