

LOUISIANA ENERGY FACTS

Louisiana Department of Natural Resources
Technology Assessment Division

www.dnr.louisiana.gov/tad

INSIDE

Highlights
page 1

Louisiana Crude Oil & Condensate Production
page 1

Current Oil & Gas Data
page 2

Louisiana Crude Oil and Condensate Production
page 3

Louisiana Natural Gas and Casinghead Production
page 3

Quick Facts
page 4

Featured Articles and Inserts

Louisiana, An Energy Consuming State:
An Update Using 2007 Data

DOE Guidance:
Davis-Bacon Act
Requirements Associated
With Recovery Act Funds



Department of Natural Resources
Scott A. Angelle, Secretary

Technology Assessment Division
T. Michael French, Director
Manuel Lam, Senior Analyst

617 North Third Street
Baton Rouge, LA 70802

Tel. (225) 342-1270
Fax. (225) 242-1397
Email: techasmt@la.gov
www.dnr.louisiana.gov/tad

Highlights

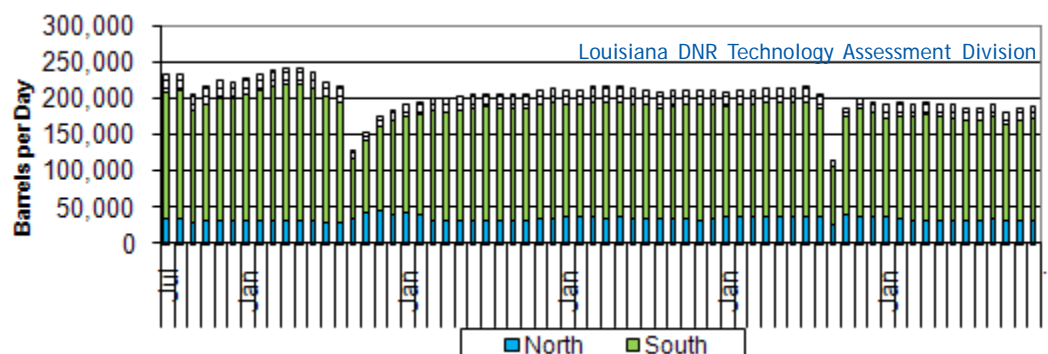
JANUARY 2010

Gas prices are expected to be over \$5 per MMBTU for the winter months. Natural gas traded above \$6 per MMBTU at the beginning of January. The higher price was due to cold weather demand, recent maintenance at the Independence Hub in the Gulf of Mexico, and positive economic data. The Energy Information Administration (EIA) estimated that working gas in storage was 3,276 BCF as of Friday, December 25, 2009. This represents a net decline of 124 BCF from the previous week. Gas in storage is 379 BCF higher than last year at this time and 391 BCF above the 5-year average of 2,885 BCF. Higher than average working gas in storage, completion of maintenance work at the Independence Hub and some nuclear plants, and the growing supply of LNG in the world market will impede gas prices reaching double digits in the near future.

Louisiana Crude Oil & Condensate Production **, Excluding Federal OCS

Month	(Barrels/Day)						% Change 08/09
	2004	2005	2006	2007	2008	2009	
January	233,632	226,993	191,443	211,360	206,247 ²	189,648 ²	-8.05%
February	235,607	232,006	194,061	211,457	209,588 ²	192,469 ²	-8.17%
March	240,406	238,200	199,608	216,356	211,545 ²	191,655 ²	-9.40%
April	236,065	241,141	198,345	215,936	213,409 ²	194,889 ²	-8.68%
May	235,448	240,452	200,913	215,575	213,247 ²	191,635 ²	-10.13%
June	230,497	236,110	204,916	213,186	213,206 ²	190,602 ²	-10.60%
July	231,724	222,435	205,773	210,654	214,425 ²	185,461	-13.51%
August	233,006	214,431	205,344	206,807	203,616 ²	186,570	-8.37%
September	203,870	126,657	204,252	208,877	113,292 ²	191,292 ¹	68.85%
October	215,554	153,099	204,051	211,500	186,140 ²	179,555 ¹	-3.54%
November	224,953	174,047	210,243	211,003	199,044 ²	185,054 ¹	-7.03%
December	222,396	183,266	212,485	211,361	194,545 ²	187,642 ¹	-3.55%
Year Average	228,597	207,403	202,620	212,006	198,192²	188,873¹	-4.70%

**All data are revised; see July 2001 statistic changes explanation



Current Oil & Gas Data

Louisiana DNR Technology Assessment Division

PRODUCTION	JUL 09	JUN 09	MAY 09	JUL 08
LOUISIANA FEDERAL OFFSHORE (OCS)				
Crude Oil & Condensate ^C (MMB)	48 ¹	42 ¹	44 ¹	39 ¹
Natural Gas & Casinghead ^C (BCF)	152 ¹	144 ¹	140 ¹	164 ¹
THE UNITED STATES TOTAL				
Crude Oil & Condensate ^C (MMB)	162	155	164	159 ²
Natural Gas & Casinghead ^C (BCF)	1,778	1,737	1,787	1,774 ²
IMPORTS				
U.S. Crude Oil ^C (MMB)	286	275	277	314 ²
U.S. Natural Gas ^C (BCF)	314	281	264	322 ²
BAKER HUGHES RIG COUNTS				
U.S. Gas ^A	675	691	723	1,543
U.S. Oil ^A	245	194	187	380
U.S. Offshore ^A	37	47	54	67
U.S. Total ^A	931	895	918	1,932
PRICES				
CRUDE OIL (\$/barrel)				
OPEC Average ^C (F.O.B.)	63.24	65.36	55.89	121.93
U.S. Imports Average ^C (F.O.B.)	62.31	64.81	55.46	122.12
U.S. Wellhead Average ^C	60.43	63.08	52.69	128.08
Gulf OCS Wellhead Average ^C	64.26	58.59	50.57	130.06
State Severance Wellhead Average ^E	54.12	47.33	46.72	124.51
NATURAL GAS (\$/MCF)				
U.S. City Gates Average ^C	5.68	5.54	5.03	12.48 ²
U.S. Imports Average ^C (F.O.B.)	3.50	3.51	3.48	11.78 ²
U.S. Wellhead Average ^C	3.43	3.45	3.45	10.62
State Royalty Wellhead Average	3.74	3.97	3.72	12.78 ²
NYMEX Henry Hub End of the Month Settle Gas Price ^B (\$/MMBTU)	3.95	3.54	3.32	13.11

Key

1	Estimated	BCF	Thousand Cubic Feet
2	Revised	MMB	Million Barrels
BCF	Billion Cubic Feet	NA	Not Available
BTU	British Thermal Unit	OCS	Outer Continental Shelf
FO.B.	Free on Board	MMBTU	Million British Thermal Units

Data Sources

A	Oil & Gas Journal	D	Natural Gas Week
B	Wall Street Journal	E	LA Dept of Revenue
C	U. S. Dept. of Energy		

Note: Unless otherwise specified, data is from the Louisiana Department of Natural Resources and excludes Federal OCS.

Note from the Editors

Louisiana Energy Facts is published monthly by the Louisiana Department of Natural Resources, Technology Assessment Division as a public service to individuals interested in Louisiana energy activities. Content includes recent oil, gas and other energy statistics and a brief analysis of current trends.

Louisiana Energy Facts articles provide insight and information on subjects of special interest to our readers, and may announce relevant, forthcoming publications.

These documents are available on the Louisiana Department of Natural Resources, Technology Assessment Division home page: <http://www.dnr.louisiana.gov/tad>. From the menu, select **Energy Data & Reports**; choose **Louisiana Energy Facts Newsletter**. Our current online holdings include issues dating from 1998 through the present. If the issue you are seeking is unavailable, please contact us.

To request a subscription or update your mailing address, contact us with your information. Please specify print or electronic subscription. We value your feedback. Please send your comments and suggestions for improving and enhancing the newsletter to: techasmt@la.gov.

Louisiana Crude Oil And Condensate Production

Excluding Federal OCS
Louisiana DNR Technology Assessment Division

YEAR	(Barrels)			
	NORTH	SOUTH	OFFSHORE	TOTAL
1990	26,022,976	99,649,083	23,042,907	148,714,966
1991	26,702,911	95,794,803	24,183,667	146,681,381
1992	25,702,774	93,681,430	23,421,660	142,805,864
1993	23,736,207	90,934,698	23,222,361	137,893,266
1994	20,963,310	83,505,726	22,660,992	127,130,028
1995	20,571,849	82,339,060	22,318,475	125,229,384
1996	22,063,110	85,465,942	21,430,471	128,959,522
1997	21,497,315	84,706,090	19,951,782	126,155,187
1998	19,570,475	85,190,830	17,520,419	122,281,725
1999	16,459,365	80,068,828	14,331,807	110,860,000
2000	15,411,033	78,303,428	13,471,159	107,185,619
2001	14,247,632 ²	79,359,164 ²	11,264,106 ²	104,870,901
2002	12,710,024 ²	71,538,364 ²	9,426,112 ²	93,674,501
2003	12,038,771 ²	68,023,655 ²	10,342,581 ²	90,405,007
2004	11,682,045 ²	63,272,735 ²	8,716,540 ²	83,671,319
2005	11,899,283 ²	57,002,561 ²	6,778,116 ²	75,679,960
2006	12,087,526 ²	55,167,718 ²	6,719,273 ²	73,974,517
2007	12,421,919 ²	57,369,526 ²	7,591,403 ²	77,382,848 ²
2008	13,104,823 ²	53,240,720 ²	6,223,785 ²	72,569,328 ²
2009	11,583,830 ¹	51,019,551 ¹	6,317,991 ¹	68,921,371 ¹

Louisiana Natural Gas And Casinghead Gas Production

Excluding Federal OCS
Louisiana DNR Technology Assessment Division

YEAR	(MCF)			
	NORTH	SOUTH	OFFSHORE	TOTAL
1990	390,417,542	1,137,642,094	182,032,816	1,710,092,452
1991	381,973,751	1,116,875,275	149,894,021	1,648,743,048
1992	372,216,566	1,124,375,499	146,989,475	1,643,581,540
1993	353,811,255	1,104,823,534	153,838,456	1,612,473,245
1994	354,055,756	1,027,648,900	155,207,250	1,536,911,906
1995	363,431,067	1,008,307,077	164,448,886	1,536,187,030
1996	417,151,690	1,027,433,122	185,614,368	1,630,199,180
1997	442,021,019	975,799,433	185,843,498	1,603,663,950
1998	437,378,918	960,351,429	179,648,787	1,577,379,135
1999	394,191,456	910,642,297	149,598,802	1,454,432,555
2000	379,772,504 ²	977,805,859 ²	106,697,655 ²	1,464,276,018
2001	390,732,356 ²	993,321,467 ²	111,213,130 ²	1,495,266,953
2002	387,003,773 ²	876,627,936 ²	98,230,371 ²	1,361,862,080
2003	416,666,945 ²	845,223,937 ²	83,460,516 ²	1,345,351,398
2004	475,369,114 ²	806,406,069 ²	68,125,862 ²	1,349,901,045
2005	537,404,666 ²	693,901,278 ²	53,547,146 ²	1,284,853,091
2006	571,427,886 ²	711,162,227 ²	67,229,774 ²	1,349,819,887
2007	611,702,287 ²	672,538,050 ²	71,437,424 ²	1,355,677,761 ²
2008	684,605,035 ²	591,994,779 ²	83,874,769 ²	1,360,474,582 ²
2009	663,828,568 ¹	705,727,780 ¹	79,595,590 ¹	1,449,151,938 ¹

This issue of **Louisiana Energy Facts** is funded 100% (\$1,066) with Petroleum Violation Escrow funds as part of the State Energy Program as approved by the U.S. Department of Energy and Department of Natural Resources. This public document was published at a total cost of \$1,066. 1,025 copies of this public document were published in this first printing at a total cost of \$1,066. The total cost of all printing of this document, including reprints, is \$1,066. This document was published by the Department of Natural Resources, P.O. Box 94396, Baton Rouge, LA 70804-9396 to promulgate the State Energy Program developed under authority of P.L. 94-163. This material was printed in accordance with the standards for printing by State agencies established pursuant to R.S. 43.31.



LOUISIANA DEPARTMENT OF NATURAL RESOURCES
Technology Assessment Division
 P. O. Box 94396
 Baton Rouge, LA 70804-9396

PRST STD
 U.S. POSTAGE
PAID
 BATON ROUGE, LA
 PERMIT NO. 936

ADDRESS SERVICE REQUESTED

INSIDE

Highlights
page 1

Louisiana Crude Oil & Condensate Production
page 1

Current Oil & Gas Data
page 2

Louisiana Crude Oil and Condensate Production
page 3

Louisiana Natural Gas and Casinghead Production
page 3

Quick Facts
page 4

Featured Articles and Inserts
 Louisiana, An Energy Consuming State:
 An Update Using 2007 Data

DOE Guidance:
 Davis-Bacon Act
 Requirements Associated
 With Recovery Act Funds

Quick Facts

JANUARY 2010

Louisiana DNR Technology Assessment Division

SPOT MARKET PRICES

	Dec 09	Nov 09	Dec 08
Louisiana Natural Gas ^D (\$/MMBTU)	5.09	3.74	6.08
NYMEX Henry Hub Last Settle Gas Price ^B (\$/MMBTU)	4.49	4.29	7.20 ²
Louisiana Sweet Crude - St. James ^B (\$/Barrel)	76.94	79.62	43.72

BAKER HUGHES RIG COUNTS

	Nov 09	Oct 09	Nov 08
North Louisiana ^A	112	106	95
South Louisiana Inland Waters ^A	13	11	20
South Louisiana Inland ^A	12	13	22
Louisiana State Offshore	1	1	3
Louisiana Federal OCS Offshore	31	29	48
Total Louisiana ^A (OCS included)	169	160	188

PRODUCTION (State Jurisdiction Only)

	Nov 09	Oct 09	Nov 08
Louisiana Crude Oil & Condensate (MMB)	5.6 ¹	5.6 ¹	6.0 ²
Louisiana Natural Gas & Casinghead (BCF)	116.2 ¹	119.2 ¹	115.2 ²

DRILLING PERMITS (State Jurisdiction Only)

	Nov 09	Oct 09	Nov 08
Total Louisiana Oil and Gas	113	135	117
Louisiana Wildcats	2	4	4
Louisiana Offshore (Wildcats included)	2	1	6