

# LOUISIANA ENERGY FACTS

Louisiana Department of Natural Resources  
Technology Assessment Division

[www.dnr.louisiana.gov/tad](http://www.dnr.louisiana.gov/tad)

## INSIDE

**Highlights**  
page 1

**Louisiana Monthly Crude Oil & Condensate Production**  
page 1

**Current Oil & Gas Data**  
page 2

**2009 Louisiana State Producing Oil Wells, By Production Rate**  
page 3

**2009 Louisiana State Producing Gas Wells, By Production Rate**  
page 3

**Quick Facts**  
page 4

**Featured Articles and Inserts**

**AIA Top Ten Green Projects: Special No. 9 House**



Department of Natural Resources  
Robert D. Harper, Secretary

Technology Assessment Division  
William J. Delmar, Jr.,  
Acting Director  
Manuel Lam, Senior Analyst

617 North Third Street  
Baton Rouge, LA 70802

Tel. (225) 342-1270  
Fax. (225) 242-1397  
Email: [techasmt@la.gov](mailto:techasmt@la.gov)  
[www.dnr.louisiana.gov/tad](http://www.dnr.louisiana.gov/tad)

## Highlights

JULY 2010

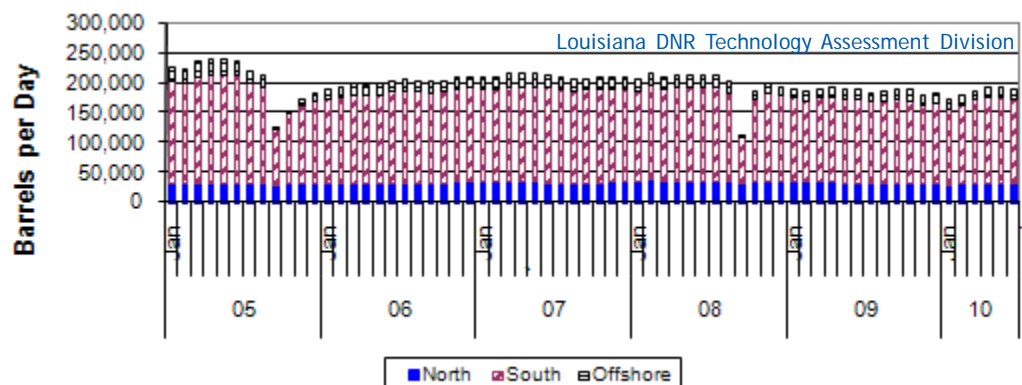
The Louisiana average spot gas price is rising. The June 2010 average gas spot price was \$4.65 per MMBTU, almost a dollar higher than the average price for June 2009 (\$3.66 per MMBTU). The higher price is attributed to several factors, including the persistent hot weather across the U.S., a smaller buildup of gas in storage, and the drilling moratorium in the Gulf of Mexico. Also contributing to the higher gas price are oil prices above \$70 per barrel and the forecast of the Atlantic hurricane season being among the most active on record. The projected price for the near future is around \$5 per MMBTU. There is no expectation of a bullish market moving sharply higher, as it has in the past when a hurricane crosses the Gulf of Mexico producing areas, because shale gas production has overshadowed the Gulf of Mexico's gas production.

### Louisiana Monthly Crude Oil & Condensate Production\*\*, Excluding Federal OCS

Month	Barrels/Day						% Change	
	2005	2006	2007	2008	2009	2010	07/08	08/09
January	227,020 <sup>2</sup>	191,403 <sup>2</sup>	211,396 <sup>2</sup>	206,289 <sup>2</sup>	189,608 <sup>2</sup>	174,207		-8.12%
February	224,032 <sup>2</sup>	194,063 <sup>2</sup>	211,535 <sup>2</sup>	217,060 <sup>2</sup>	185,806 <sup>2</sup>	180,965 <sup>1</sup>		-2.61%
March	238,229 <sup>2</sup>	199,617 <sup>2</sup>	216,410 <sup>2</sup>	211,520 <sup>2</sup>	191,545 <sup>2</sup>	188,057 <sup>1</sup>		-1.82%
April	241,172 <sup>2</sup>	198,347 <sup>2</sup>	215,932 <sup>2</sup>	213,395 <sup>2</sup>	194,727 <sup>2</sup>	194,966 <sup>1</sup>		0.12%
May	240,472 <sup>2</sup>	200,882 <sup>2</sup>	216,029 <sup>2</sup>	213,282 <sup>2</sup>	191,586 <sup>2</sup>	195,193 <sup>1</sup>		1.88%
June	236,138 <sup>2</sup>	204,915 <sup>2</sup>	213,197 <sup>2</sup>	213,202 <sup>2</sup>	190,466 <sup>2</sup>	191,298 <sup>1</sup>		0.44%
July	222,443 <sup>2</sup>	205,772 <sup>2</sup>	210,657 <sup>2</sup>	214,383 <sup>2</sup>	185,432 <sup>2</sup>		-13.50%	
August	214,361 <sup>2</sup>	205,340 <sup>2</sup>	206,806 <sup>2</sup>	203,585 <sup>2</sup>	187,005 <sup>2</sup>		-8.14%	
September	126,642 <sup>2</sup>	204,234 <sup>2</sup>	208,868 <sup>2</sup>	113,199 <sup>2</sup>	191,456 <sup>2</sup>		69.13%	
October	153,091 <sup>2</sup>	204,031 <sup>2</sup>	211,505 <sup>2</sup>	186,136 <sup>2</sup>	190,489 <sup>2</sup>		2.34%	
November	174,021 <sup>2</sup>	210,242 <sup>2</sup>	210,975 <sup>2</sup>	199,040 <sup>2</sup>	180,706 <sup>2</sup>		-9.21%	
December	183,413 <sup>2</sup>	212,452 <sup>2</sup>	211,340 <sup>2</sup>	194,496 <sup>2</sup>	183,405 <sup>2</sup>		-5.70%	
<b>Year Average</b>	<b>206,753<sup>2</sup></b>	<b>202,608<sup>2</sup></b>	<b>212,054<sup>2</sup></b>	<b>198,799<sup>2</sup></b>	<b>188,519<sup>2</sup></b>	<b>187,447<sup>*</sup></b>		

\* Partial Year

\*\*All data are revised; see July 2001 statistic changes explanation



## Current Oil & Gas Data

Louisiana DNR Technology Assessment Division

PRODUCTION	JAN 10	DEC 09	NOV 09	JAN 09
LOUISIANA FEDERAL OFFSHORE (OCS)				
Crude Oil & Condensate <sup>C</sup> (MMB)	46 <sup>1</sup>	48 <sup>1</sup>	44 <sup>1</sup>	35 <sup>1</sup>
Natural Gas & Casinghead <sup>C</sup> (BCF)	142 <sup>1</sup>	145 <sup>1</sup>	139 <sup>1</sup>	135 <sup>1</sup>
THE UNITED STATES TOTAL				
Crude Oil & Condensate <sup>C</sup> (MMB)	168	169	164	163
Natural Gas & Casinghead <sup>C</sup> (BCF)	1,792	1,760 <sup>2</sup>	1,719 <sup>2</sup>	1,792 <sup>2</sup>
<b>IMPORTS</b>				
U.S. Crude Oil <sup>C</sup> (MMB)	262	252	261	305
U.S. Natural Gas <sup>C</sup> (BCF)	382	349 <sup>2</sup>	295 <sup>2</sup>	360
<b>BAKER HUGHES RIG COUNTS</b>				
U.S. Gas <sup>A</sup>	822	758	734	1,215
U.S. Oil <sup>A</sup>	433	404	362	328
U.S. Offshore <sup>A</sup>	42	37	36	66
U.S. Total <sup>A</sup>	1,267	1,172	1,107	1,553
<b>PRICES</b>				
CRUDE OIL (\$/barrel)				
OPEC Average <sup>C</sup> (F.O.B.)	73.42	72.48 <sup>2</sup>	73.60	37.60
U.S. Imports Average <sup>C</sup> (F.O.B.)	72.96	71.24 <sup>2</sup>	73.16	36.86 <sup>2</sup>
U.S. Wellhead Average <sup>C</sup>	72.89	70.53	71.98	35.00
Gulf OCS Wellhead Average <sup>C</sup>	73.91	74.77	71.74	39.16
State Severance Wellhead Average <sup>E</sup>	69.72	64.36	63.33	58.12
NATURAL GAS (\$/MCF)				
U.S. City Gates Average <sup>C</sup>	6.83	6.23 <sup>2</sup>	6.33	7.98 <sup>2</sup>
U.S. Imports Average <sup>C</sup> (F.O.B.)	5.96	5.23	4.39 <sup>2</sup>	6.18
U.S. Wellhead Average <sup>C</sup>	5.14	4.44	3.64	5.15
State Royalty Wellhead Average	5.87	5.03	4.26 <sup>2</sup>	5.89 <sup>2</sup>
NYMEX Henry Hub End of the Month Settle Gas Price <sup>B</sup> (\$/MMBTU)	5.81	4.49	4.29	6.14

### Key

### Data Sources

<b>1</b>	Estimated	<b>MCF</b>	Thousand Cubic Feet	<b>A</b>	Oil & Gas Journal	<b>D</b>	Natural Gas Week
<b>2</b>	Revised	<b>MMB</b>	Million Barrels	<b>B</b>	Wall Street Journal	<b>E</b>	LA Dept of Revenue
<b>BCF</b>	Billion Cubic Feet	<b>NA</b>	Not Available	<b>C</b>	U. S. Dept. of Energy		
<b>BTU</b>	British Thermal Unit	<b>OCS</b>	Outer Continental Shelf	<b>Note:</b> Unless otherwise specified, data is from the Louisiana Department of Natural Resources and excludes Federal OCS.			
<b>FO.B.</b>	Free on Board	<b>MMBTU</b>	Million British Thermal Units				

### Note from the Editors

*Louisiana Energy Facts* is published monthly by the Louisiana Department of Natural Resources, Technology Assessment Division as a public service to individuals interested in Louisiana energy activities. Content includes recent oil, gas and other energy statistics and a brief analysis of current trends.

*Louisiana Energy Facts* articles provide insight and information on subjects of special interest to our readers, and may announce relevant, forthcoming publications.

These documents are available on the Louisiana Department of Natural Resources, Technology Assessment Division home page: <http://www.dnr.louisiana.gov/tad>. From the menu, select **Energy Data & Reports**; choose **Louisiana Energy Facts Newsletter**. Our current online holdings include issues dating from 1998 through the present. If the issue you are seeking is unavailable, please contact us.

To request a subscription or update your mailing address, contact us with your information. Please specify print or electronic subscription. We value your feedback. Please send your comments and suggestions for improving and enhancing the newsletter to: [techasmt@la.gov](mailto:techasmt@la.gov).

## 2009 Louisiana State Producing Oil Wells, By Production Rate OCS Wells Excluded

Louisiana DNR Technology Assessment Division

PRODUCTION BRACKET	NUMBER OF WELLS		TOTAL ANNUAL PRODUCTION	
BARRELS/DAY	WELLS	% TOTAL WELLS	BARRELS/YEAR	% TOTAL PRODUCTION
Less than or equal 10	18,032	86.57%	9,744,122	14.12%
Between 10 - 15	657	3.15%	3,341,193	4.84%
Between 15 - 20	461	2.21%	3,324,661	4.82%
Between 20 - 30	545	2.62%	5,431,332	7.87%
Between 30 - 40	204	0.98%	2,968,596	4.30%
Between 40 - 50	183	0.88%	3,313,884	4.80%
Between 50 - 75	304	1.46%	7,433,714	10.77%
Between 75 - 100	144	0.69%	5,097,779	7.39%
Between 100 - 150	133	0.64%	6,802,846	9.86%
Between 150 - 200	47	0.23%	3,325,656	4.82%
Between 200 - 300	61	0.29%	5,553,265	8.05%
Between 300 - 500	44	0.21%	6,973,937	10.11%
Between 500 - 1,000	12	0.06%	4,243,852	6.15%
Between 1,000 - 2,000	1	0.00%	435,273	0.63%
Between 2,000 - 5,000	1	0.00%	1,016,057	1.47%
Over 5000	0	0.00%	0	0.00%

## 2009 Louisiana State Producing Gas Wells, By Production Rate OCS Wells Excluded

Louisiana DNR Technology Assessment Division

PRODUCTION BRACKET	NUMBER OF WELLS		TOTAL ANNUAL PRODUCTION	
MCF/DAY	WELLS	% TOTAL WELLS	MCF/YEAR	% TOTAL PRODUCTION
Less than or equal 50	11,880	62.22%	30,573,804	2.00%
Between 50 - 60	499	2.62%	9,093,057	0.60%
Between 60 - 70	421	2.20%	9,225,097	0.60%
Between 70 - 80	328	1.72%	8,263,996	0.54%
Between 80 - 90	273	1.43%	7,767,675	0.51%
Between 90 - 100	298	1.56%	9,428,817	0.62%
Between 100 - 250	2,491	13.05%	141,227,315	9.24%
Between 250 - 400	1,164	6.10%	121,283,942	7.94%
Between 400 - 800	916	4.80%	166,526,079	10.90%
Between 800 - 1,600	329	1.72%	136,619,985	8.94%
Between 1,600 - 3,200	241	1.26%	192,493,039	12.60%
Between 3,200 - 6,400	178	0.93%	282,041,247	18.46%
Between 6,400 - 12,800	59	0.31%	224,858,139	14.72%
Between 12,800 - 25,600	12	0.06%	69,331,232	4.54%
Over 25,600	5	0.03%	119,102,976	7.80%

This issue of **Louisiana Energy Facts** is funded 100% (\$848) with Petroleum Violation Escrow funds as part of the State Energy Program as approved by the U.S. Department of Energy and Department of Natural Resources. This public document was published at a total cost of \$848.00. 1,000 copies of this public document were published in this first printing at a total cost of \$848.00. The total cost of all printing of this document, including reprints, is \$848.00. This document was published by the Department of Natural Resources, P.O. Box 94396, Baton Rouge, LA 70804-9396 to promulgate the State Energy Program developed under authority of P.L. 94-163. This material was printed in accordance with the standards for printing by State agencies established pursuant to R.S. 43:31.



LOUISIANA DEPARTMENT OF NATURAL RESOURCES  
 Technology Assessment Division  
 P. O. Box 94396  
 Baton Rouge, LA 70804-9396

PRST STD  
 U.S. POSTAGE  
**PAID**  
 BATON ROUGE, LA  
 PERMIT NO. 936

## ADDRESS SERVICE REQUESTED

### INSIDE

**Highlights**  
page 1

**Louisiana Monthly Crude Oil & Condensate Production**  
page 1

**Current Oil & Gas Data**  
page 2

**2009 Louisiana State Producing Oil Wells, By Production Rate**  
page 3

**2009 Louisiana State Producing Gas Wells, By Production Rate**  
page 3

**Quick Facts**  
page 4

**Featured Articles and Inserts**  
[AIA Top Ten Green Projects: Special No. 9 House](#)

## Quick Facts

## JULY 2010

Louisiana DNR Technology Assessment Division

<b>SPOT MARKET PRICES</b>	<b>Jun 10</b>	<b>May 10</b>	<b>Jun 09</b>
Louisiana Natural Gas <sup>D</sup> (\$/MMBTU)	4.65	4.09	3.66
NYMEX Henry Hub Last Settle Gas Price <sup>B</sup> (\$/MMBTU)	4.16	4.27	3.95 <sup>2</sup>
Louisiana Sweet Crude - St. James <sup>B</sup> (\$/Barrel)	78.87	79.73	71.15
<b>BAKER HUGHES RIG COUNTS</b>	<b>May 10</b>	<b>Apr 10</b>	<b>May 09</b>
North Louisiana <sup>A</sup>	140	140	77
South Louisiana Inland Waters <sup>A</sup>	12	14	6
South Louisiana Inland <sup>A</sup>	19	15	11
Louisiana State Offshore	2	3	2
Louisiana Federal OCS Offshore	40	42	45
Total Louisiana <sup>A</sup> (OCS included)	213	215 <sup>2</sup>	141
<b>PRODUCTION (State Jurisdiction Only)</b>	<b>May 10</b>	<b>Apr 10</b>	<b>May 09</b>
Louisiana Crude Oil & Condensate (MMB)	6.0 <sup>1</sup>	5.8 <sup>1</sup>	6.3 <sup>2</sup>
Louisiana Natural Gas & Casinghead (BCF)	135.4 <sup>1</sup>	129.1 <sup>1</sup>	125.2 <sup>2</sup>
<b>DRILLING PERMITS (State Jurisdiction Only)</b>	<b>May 10</b>	<b>Apr 10</b>	<b>May 09</b>
Total Louisiana Oil and Gas	118	183	97
Louisiana Wildcats	0	1	1
Louisiana Offshore (Wildcats included)	4	2	1