

ADDENDUM NO. 1 TO PLANS AND CONTRACT DOCUMENTS

FOR

**Franklin Canal Flood Protection System Phase II Pump Station
TV-52**

St. Mary Parish



**STATE OF LOUISIANA
COASTAL PROTECTION AND RESTORATION AUTHORITY**

May 28, 2014

ADDENDUM NO. 1
Franklin Canal Flood Protection System Phase II Pump Station (TV-52)

This addendum shall be considered part of the Plans, Specifications, and Contract Documents (except as noted otherwise) and is issued to change, amplify, or delete from or otherwise explain these documents where provisions of this addendum differ from those of the original documents. This addendum shall have precedence over the original documents and shall govern.

I. Responses to Questions Submitted by Contractors:

Contractor Question/Comment (1): In Section 43 21 40, 1.4.SD-04 (Samples) Calls out for material samples. Please specify what type of “samples” are required if any.

Response (1): No material samples will be required for pump system submittals.

Contractor Question/Comment (2): In Section 43 21 40, 1.4.SD-06 (Test Reports) Calls out for “pump model test performance for each size pump”, “witness test” and “factory test” yet there is no mention of testing requirements anywhere else in the specification. Is a performance test required and if so would it be a witnessed or non-witnessed test?

Response (2): Factory pump testing shall not be required. Only field tests shall be required in accordance with Section 43 21 40 Paragraph 3.3 FIELD TESTS.

Contractor Question/Comment (3): In accordance to the instructions to bidders Article 4, item 4.3.2, US FUSION LLC is requesting consideration of an alternate/value engineered product. We request an approval for Hydrotex AB600 as an alternate Line items Ref. No. 8 & 30 – Articulated Concrete Block Revetment. The AB fabric form consists of a series of compartments linked by an interwoven perimeter. Grout ducts interconnect the compartments, and high strength revetment cables are installed between and through the compartments and grout ducts. Once filled, the AB Mats becomes a mattress of pillow-shaped, rectangular concrete blocks. The interwoven perimeters between the blocks serve as hinges to permit articulation. The cables remain embedded in the concrete blocks to link the blocks together and facilitate articulation. The benefits we have over the mats include reduced shipping costs over precast, installation of each area with a single continuous panel, field customization, and less thickness with the same weight; which will reduce cost. The AB600 (68lbs per sq.ft) will also be able to be sewn and placed around the piles for a more intimate fit. This product eliminates the safety hazard of lifting heavy articulated mats over/around piles and the possibility of cracked/broken mats being installed. I’ve attached the specification sheet for your review.

Response (3): The Hydrotex AB600 is not an acceptable alternative.

II. Revisions to Specifications:

A. SP-21.4.3 RECORDATION OF CONTRACT AND BOND [38:2241A(2)]:

Remove and replace this section in its entirety with the following:

The Contractor shall record within thirty (30) days the Contract Between Owner and Contractor, and Performance and Payment Bond with the Clerk of Court in the Parish in which the Work is to be performed. The Contractor shall obtain a Certificate of Recordation from the Clerk of Court and forward this Certificate immediately to the

ADDENDUM NO. 1
Franklin Canal Flood Protection System Phase II Pump Station (TV-52)

Coastal Protection and Restoration Authority contact person listed in the Advertisement for Bids. No requests for payment will be processed until receipt of the Certificate of Recordation.

B. GP - 53 SUBSTANTIAL COMPLETION

Remove and replace the second paragraph of this section in its entirety and replace with the following:

If the Owner or its representative determines the Project is substantially complete, the Owner will issue a Notice of Acceptance identifying the date the Project reached Substantial Completion and attach a punch list, if applicable, identifying the remaining items that must be completed before final payment. The Contractor shall then file the executed Notice of Acceptance with the Clerk of Court in the Parish where the work is performed and shall forward one complete copy of the recorded acceptance to the Owner and Engineer.

C. Special Provisions SP-2 Bullets:

1. Revise Bullet 10: Gas service lines to pump engines *from termination of supply line at generator pad.*
2. Delete entire Bullet 12: Approximately 800 linear feet of aggregate roadway on levee crown.

D. Special Provisions SP-9

ADD the following sentence: "Construction of gas supply line to pump station service line will be concurrent with this contract and Contractor must coordinate with supply line installer."

E. Special Provisions SP-13

ADD the following sentence: "The use of levee roadway is prohibited."

F. Metal Building Specification 13 34 19 Section 2.2

Remove Sentence: "Ludwig Buildings Enterprises, LLC or an approved equal."

G. Fiberglass Reinforced Plastic (FRP) Grating Specification 06 73 01 replace Section 1.3 with:

"No separate measurement or payment will be made for the material and work covered under this section. All costs in connection with supply and installation of fiberglass reinforced plastic grating and accessories shall be included in the contract price for Bid Items: "**Connecting Walkway Extension**," "East Side Walkway," and "Deduct East Side Walkway" where fiberglass reinforced plastic grating is used."

ADDENDUM NO. 1
Franklin Canal Flood Protection System Phase II Pump Station (TV-52)

- H. Metal Wall Louvers Specification 08 91 00 change Section 1.3 to:
“No separate measurement will be made for the material and work covered under this section. Payment will be included in the contract unit price for Bid Items “Pre-engineered Metal Building 18’ 49’x25’, “Pre-engineered Metal Building 18’x50’,” and “Deduct Pre-engineered Metal Building 10’x25’.”
- I. Delete following Specification in its entirety: Graded-Crushed Aggregate Base Course, Section 32 11 23 and title as “Reserved”.
- J. Add the following paragraph to Surveying Specification 01 01 02 Section 1.4.2.1
“Survey ACB after placement on a 5’ grid and at joints to verify installation is within tolerance and that no overlapping of mats exists. Where necessary correct the ACB placement and resurvey at no direct pay.”
- K. Remove Surveying Specification 01 01 02 Sections 1.4.1.3 and 1.4.2.6
Title as “Reserved”
- L. Replace Structural Steel Specification 05 12 00 Section 1.3 with the following:
“No separate measurement will be made for the material and work covered under this section. Work shall be included in the contract price for bid items to which the work pertains.

III. Revision to Plans (revised sheets attached):

- A. Sheet C-002
Note No. 3 revised and placement of proposed rip rap identified.
- B. Sheet C-003
Placement of rip rap identified.
- C. Sheet S-004
Notes and pile details revised.
- D. LADOTD Standard Detail BD 2.5.1.0.2 – CS-216
Add Sheet to Plan Set.
- E. Sheet G-003
Revise Steel Note 1.C.1. “API 5L PSL 1 GRADE X42, NO SPIRAL WELDS, Fy=42 ksi” to read “API 5L PSL 1 GRADE X42, Fy=42 ksi”

IV. Additional Clarifications:

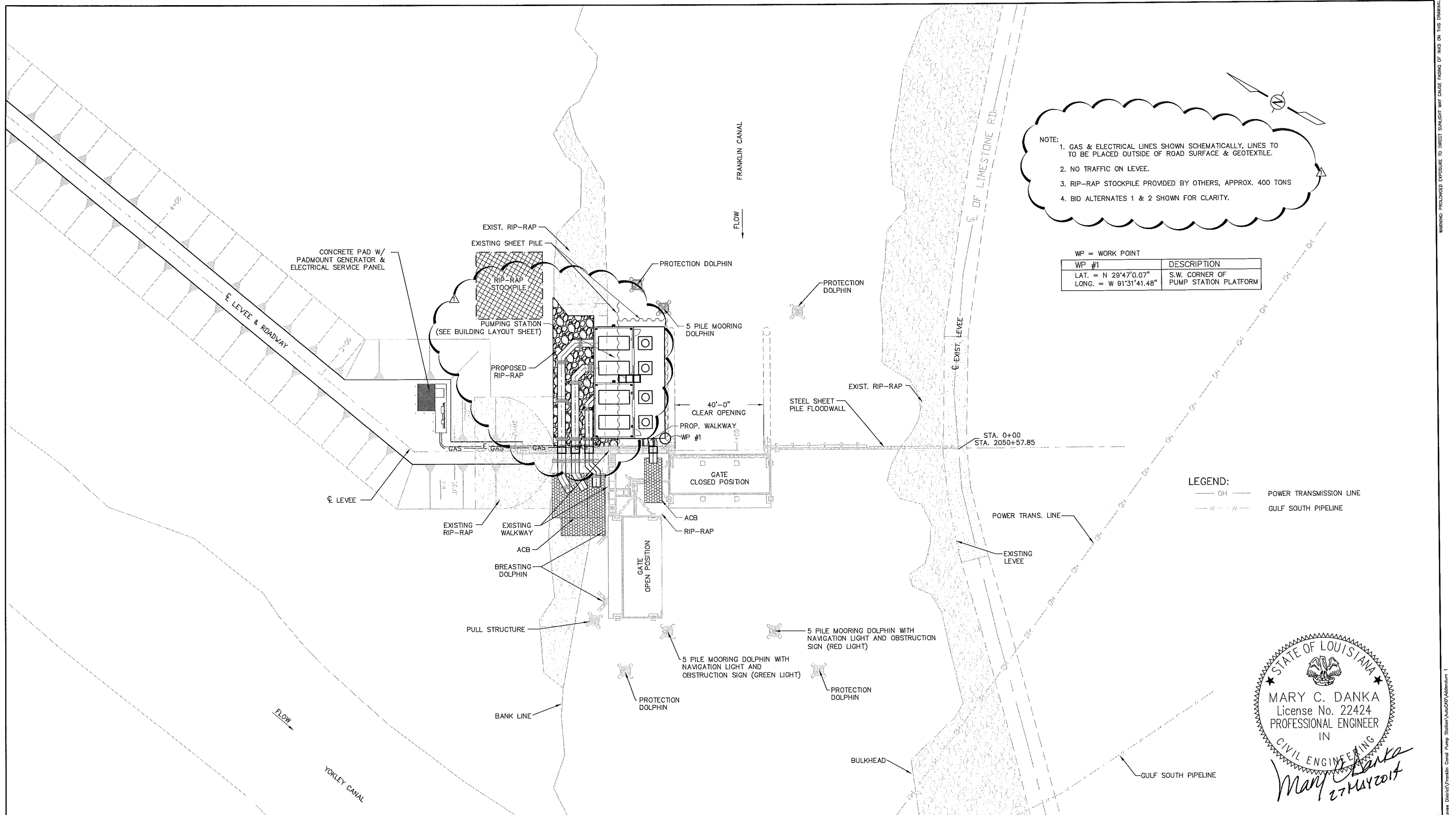
- A. Engineer will allow NDT weld inspection for a minimum of 10% of the welds for piles spliced in the field. For the remaining field welds, visual inspections by the contractors inspector will serve as the weld inspections. However, this shall not remove the responsibility of the Contractor to repair any unacceptable welds found during inspection at no additional cost to the Owner. All welders must be certified and those certifications

ADDENDUM NO. 1
Franklin Canal Flood Protection System Phase II Pump Station (TV-52)

will be submitted to the Engineer as stated in the specifications. Engineer reserves the right to identify which welds shall be inspected by NDT.

- B. All permits not supplied by Owner shall be paid for under Bid Item No. 1, Mobilization and Demobilization.
 - C. Any reference to limestone roadway listed in contract documents should be ignored.
 - D. Spiral welded pipe shall be allowed for pipe piles.
- V. NON - MANDATORY PRE-BID CONFERENCE ATTENDANCE RECORD**
The Non-Mandatory Pre-bid Conference Attendance Record is attached.
- VI. DAVIS BACON WAGE RATE SHEET**
The updated Davis-Bacon wage sheet is attached.

WARNING: PROLONGED EXPOSURE TO DIRECT SUNLIGHT MAY CAUSE FADING OF INKS ON THIS DRAWING.



NOTE:

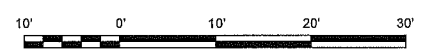
1. GAS & ELECTRICAL LINES SHOWN SCHEMATICALLY. LINES TO BE PLACED OUTSIDE OF ROAD SURFACE & GEOTEXTILE.
2. NO TRAFFIC ON LEVEE.
3. RIP-RAP STOCKPILE PROVIDED BY OTHERS, APPROX. 400 TONS
4. BID ALTERNATES 1 & 2 SHOWN FOR CLARITY.

WP = WORK POINT

WP #1	DESCRIPTION
LAT. = N 29°47'0.07"	S.W. CORNER OF PUMP STATION PLATFORM
LONG. = W 91°31'41.48"	

LEGEND:

— OH —	POWER TRANSMISSION LINE
- - - - -	GULF SOUTH PIPELINE



REV.	DATE	DESCRIPTION	BY
Δ	05/27/14	ADDENDUM 1	MCD
○	03/21/14	ISSUED FOR CONSTRUCTION	MCD

Shaw Environmental & Infrastructure, Inc.
(A CB&I COMPANY)

OFFICE LOCATIONS:

197 ELYSIAN DRIVE HOUMA, LA. 70363 PHONE: 985.868.3434	4171 ESSEN LANE BATON ROUGE, LA 70809 PHONE: 225.932.2758
--	---

COASTAL PROTECTION AND RESTORATION AUTHORITY

450 LAUREL STREET
BATON ROUGE, LOUISIANA 70801

DRAWN BY: TOT DESIGNED BY: MCD

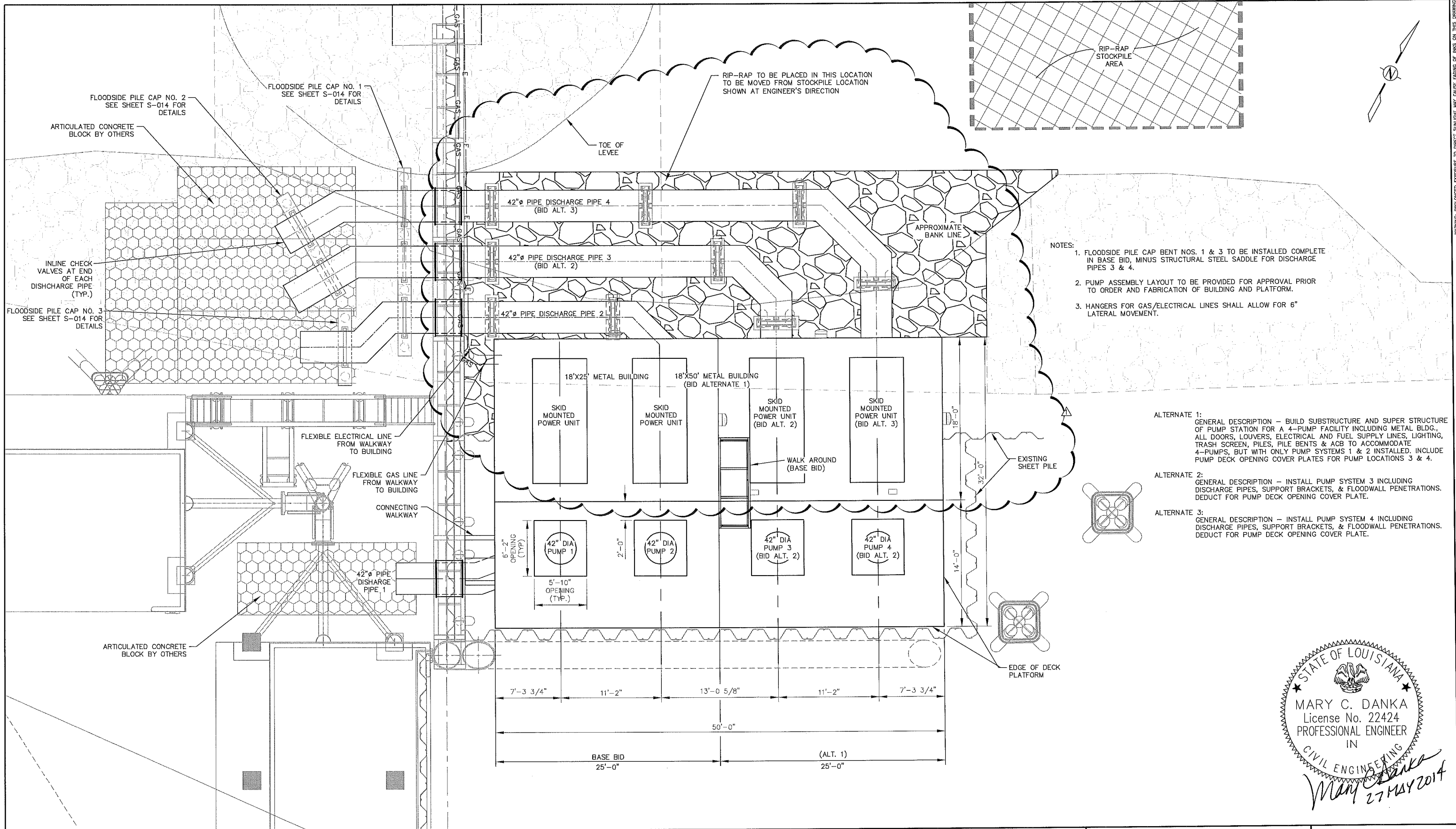
PUMP STATION SITE PLAN

STATE PROJECT NUMBER: TV-52

APPROVED BY:

DATE: AUGUST 2013

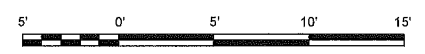
SHEET C-002



- NOTES:
1. FLOODSIDE PILE CAP BENT NOS. 1 & 3 TO BE INSTALLED COMPLETE IN BASE BID, MINUS STRUCTURAL STEEL SADDLE FOR DISCHARGE PIPES 3 & 4.
 2. PUMP ASSEMBLY LAYOUT TO BE PROVIDED FOR APPROVAL PRIOR TO ORDER AND FABRICATION OF BUILDING AND PLATFORM.
 3. HANGERS FOR GAS/ELECTRICAL LINES SHALL ALLOW FOR 6" LATERAL MOVEMENT.

- ALTERNATE 1:
GENERAL DESCRIPTION - BUILD SUBSTRUCTURE AND SUPER STRUCTURE OF PUMP STATION FOR A 4-PUMP FACILITY INCLUDING METAL BLDG., ALL DOORS, LOUVERS, ELECTRICAL AND FUEL SUPPLY LINES, LIGHTING, TRASH SCREEN, PILES, PILE BENTS & ACB TO ACCOMMODATE 4-PUMPS, BUT WITH ONLY PUMP SYSTEMS 1 & 2 INSTALLED. INCLUDE PUMP DECK OPENING COVER PLATES FOR PUMP LOCATIONS 3 & 4.
- ALTERNATE 2:
GENERAL DESCRIPTION - INSTALL PUMP SYSTEM 3 INCLUDING DISCHARGE PIPES, SUPPORT BRACKETS, & FLOODWALL PENETRATIONS. DEDUCT FOR PUMP DECK OPENING COVER PLATE.
- ALTERNATE 3:
GENERAL DESCRIPTION - INSTALL PUMP SYSTEM 4 INCLUDING DISCHARGE PIPES, SUPPORT BRACKETS, & FLOODWALL PENETRATIONS. DEDUCT FOR PUMP DECK OPENING COVER PLATE.

STATE OF LOUISIANA
 MARY C. DANKA
 License No. 22424
 PROFESSIONAL ENGINEER
 IN
 CIVIL ENGINEERING
Mary C. Danka
 27 MAY 2014



REV.	DATE	DESCRIPTION	BY
Δ	05/27/14	ADDENDUM 1	MCD
0	03/21/14	ISSUED FOR CONSTRUCTION	MCD

Shaw Environmental & Infrastructure, Inc.
 (A CB&I COMPANY)

OFFICE LOCATIONS:
 197 ELYSIAN DRIVE
 HOUMA, LA. 70363
 PHONE: 985.868.3434

4171 ESSEN LANE
 BATON ROUGE, LA 70809
 PHONE: 225.932.2758

COASTAL PROTECTION AND RESTORATION AUTHORITY
 450 LAUREL STREET
 BATON ROUGE, LOUISIANA 70801

DRAWN BY: TOT DESIGNED BY: MCD

DETAIL SITE PLAN

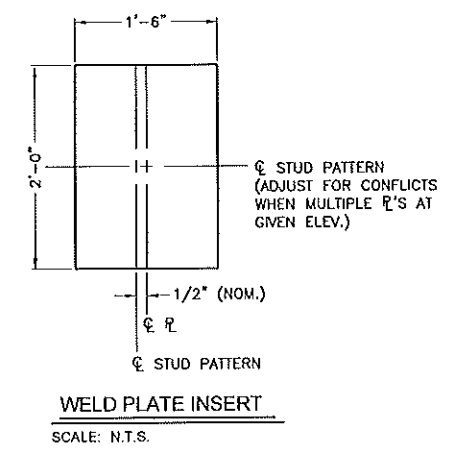
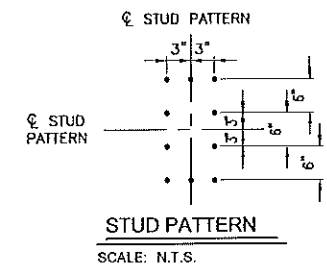
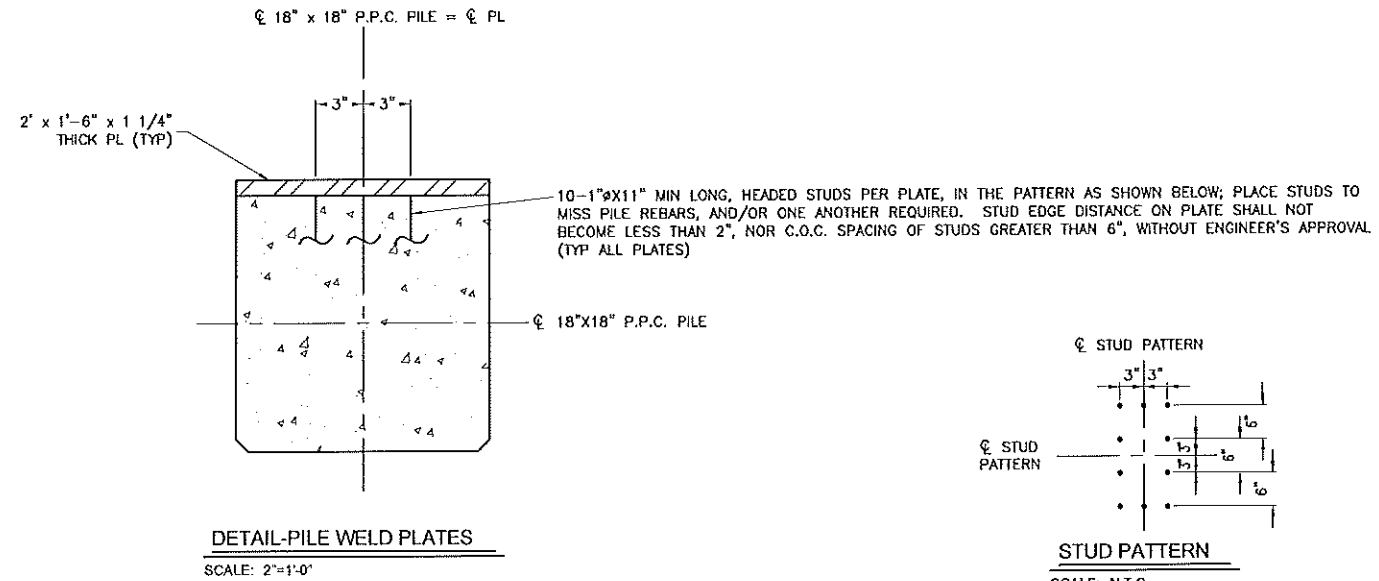
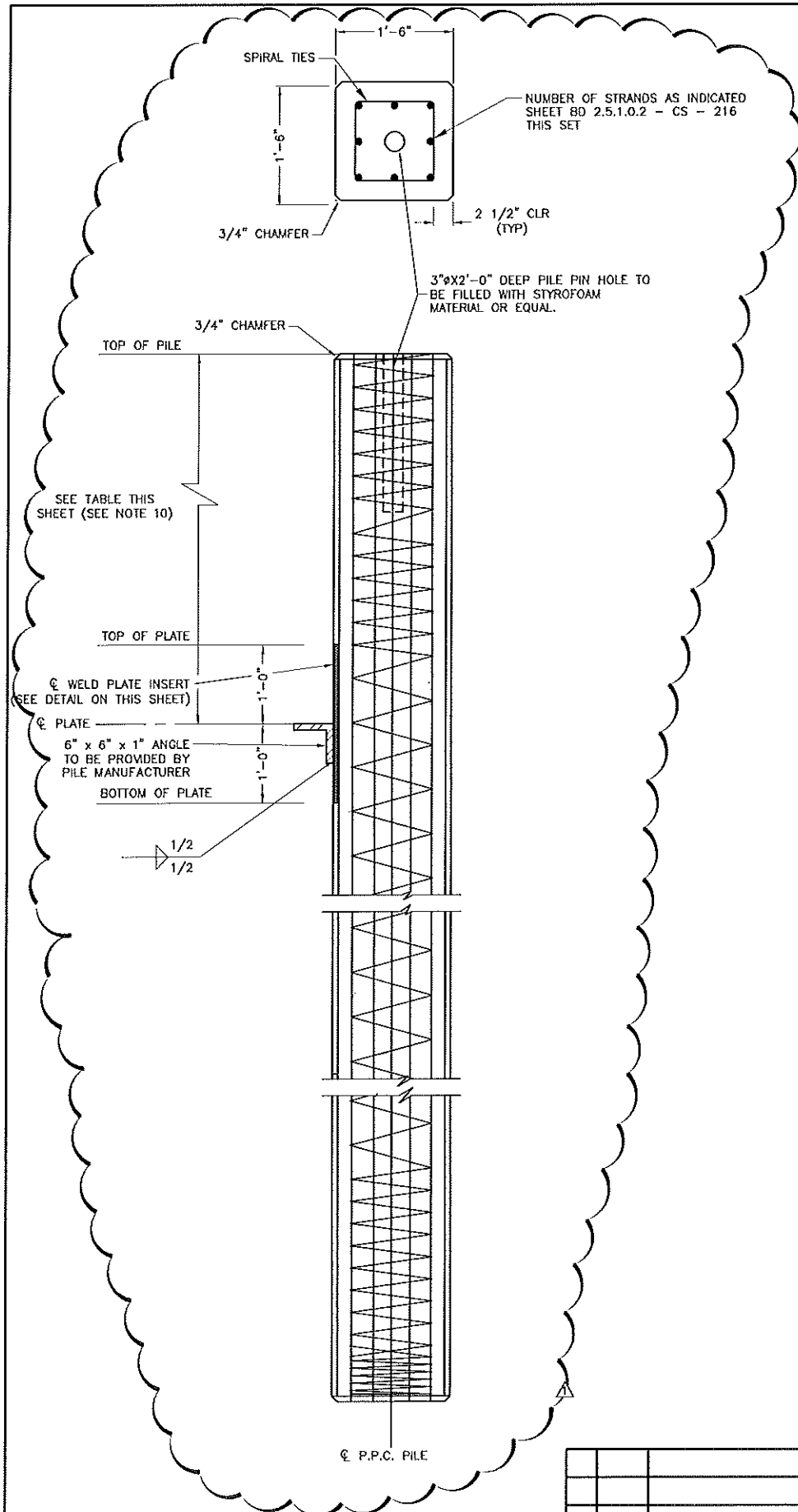
STATE PROJECT NUMBER: TV-52

APPROVED BY:

DATE: AUGUST 2013

SHEET C-003

WARNING: PROLONGED EXPOSURE TO DIRECT SUNLIGHT MAY CAUSE FADING OF LINES ON THIS DRAWING



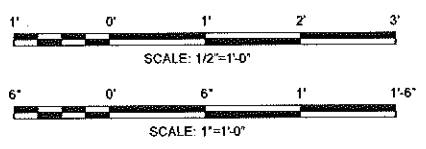
PILE #	TRASH SCREEN PLATE ϕ DISTANCE TO TOP OF PILE (FT.)	SUPPORT PLATE DISTANCE TO TOP OF PILE (FT.)
BS 113	N/A	4.987
BS 117	N/A	4.987
BS 120	N/A	4.987
BW 110	N/A	6.817
BW 111	N/A	4.987
BW 113	4.917, 16.667 +	4.987
BW 120	4.917, 16.667 *	N/A
BZ 110	4.917, 16.667 *	6.817
BZ 111	4.917, 16.667 *	N/A
BZ 113	4.917, 16.667 *	N/A
BZ 117	4.917, 16.667 *	N/A
BZ 120	4.917, 16.667 *	N/A

BID ALT. 1 LOCATION
BID ALT. 1 LOCATION

* DENOTES PLATES TO INCLUDE 6"x6"x1" ANGLE
+ BASE BID ONLY
SEE SHEET S-005 FOR ϕ LOCATIONS & NUMBER

PILE SCHEDULE	
PILE ULTIMATE CAPACITY	
TENSION	COMPRESSION
98 TONS	152 TONS

NOTES:
1. THIS SHEET TO BE USED FOR EMBEDMENT DETAILS ONLY. FOR PILE FABRICATION DETAILS SEE LADOTD STANDARD DETAIL SHEET BD 2.5.1.0.2-CS-216.
2. STEEL WELD-PLATE SHALL BE ASTM A572-GRADE 60.
3. STUD MATERIAL SHALL BE ASTM A193 GR_07, 125 KSI OR F1554, GR_105 OR APPROVED EQUAL.
4. STRUCTURAL STEEL ANGLE AND WELD PLATE INSERTS TO BE HOT DIP GALVANIZED STEEL.
5. REFER TO SHEET S-016 FOR WELD PLATE LOCATIONS.



18"x18" PRESTRESSED PRECAST CONCRETE PILE
SCALE: 1/2"=1'-0"

REV.	DATE	DESCRIPTION	BY
A	05/27/14	ADDENDUM 1	MCD
O	03/21/14	ISSUED FOR CONSTRUCTION	MCD

Shaw Environmental & Infrastructure, Inc.
(A CB&I COMPANY)

OFFICE LOCATIONS:
197 ELYSIAN DRIVE HOUMA, LA. 70363 PHONE: 985.868.3434
4171 ESSEN LANE BATON ROUGE, LA 70809 PHONE: 225.932.2758

COASTAL PROTECTION AND RESTORATION AUTHORITY
450 LAUREL STREET
BATON ROUGE, LOUISIANA 70801

DRAWN BY: TOT
DESIGNED BY: MCD

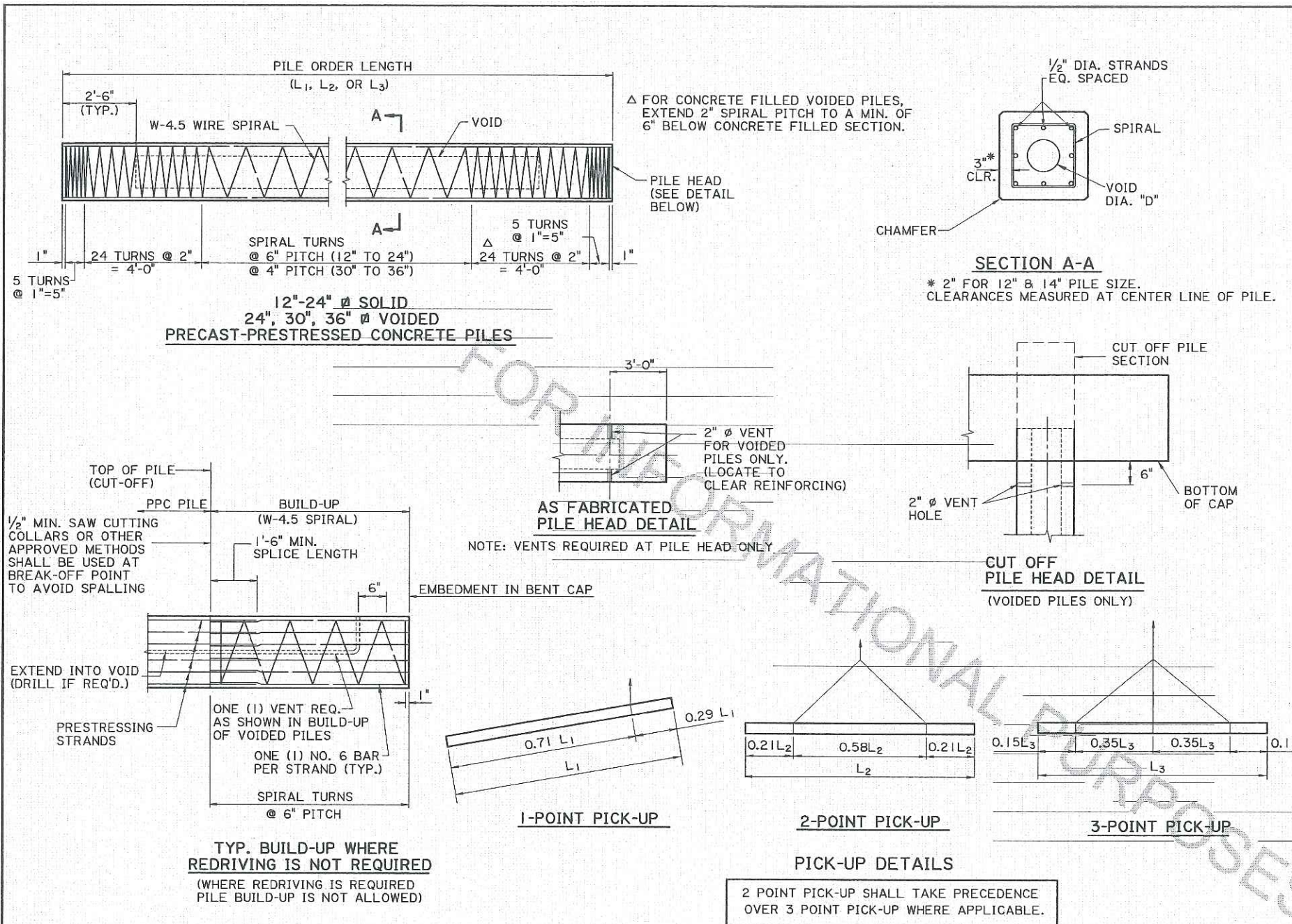
PRECAST PRESTRESSED PILES SECTIONS & DETAILS

STATE PROJECT NUMBER: TV-52
DATE: AUGUST 2013
SHEET S-004

APPROVED BY:

STATE OF LOUISIANA
MARY C. DANKA
License No. 22424
PROFESSIONAL ENGINEER
IN
CIVIL ENGINEERING
MAY 27 2014

WARNING: PROLONGED EXPOSURE TO DIRECT SUNLIGHT MAY CAUSE FADING OF INKS ON THIS DRAWING.



PILE SIZE (in.)	SECTION PROPERTIES					SQUARE SPIRAL LAYOUTS					
	VOID "d" (in.)	AREA (in. ²)	SECTION MODULUS (in. ³)	WEIGHT PER FOOT (lb/ft)	CHAMFER (in.)	NO. OF STRANDS	PRESTRESS IN CONCRETE (psi)		MAX. CASTING LENGTH (ft)		
							AT RELEASE	AT 90 DAYS	L ₁	L ₂	L ₃
12 SOLID	0	144	288	150	3/4"	4	830	774	53.7	76.1	108.6
14 SOLID	0	196	457	204	3/4"	8	1203	1116	66.0	93.4	133.4
16 SOLID	0	256	683	267	3/4"	12	1373	1273	67.6	95.7	136.7
18 SOLID	0	324	972	338	3/4"	12	1096	1026	72.6	102.7	146.7
20 SOLID	0	400	1333	417	1/2"	16	1180	1106	78.7	111.3	159.0
24 SOLID	0	576	2304	600	1/2"	24	1227	1154	86.7	122.7	175.2
24 VOIDED	10.5	489	2254	510	1/2"	20	1204	1119	92.9	131.4	187.7
30 VOIDED	16.5	686	4257	715	1/2"	28	1203	1120	107.8	152.6	217.9
36 VOIDED	22.5	898	7077	936	1/2"	36	1182	1102	120.8	170.9	244.1

GENERAL NOTES

CONCRETE IN PILE: THE CONTRACTOR SHALL DESIGN AND SUBMIT FOR APPROVAL A CLASS (PM) CONCRETE MIX WITH MINIMUM COMPRESSIVE CYLINDER STRENGTH OF 6000 psi AT 28 DAYS. CONCRETE STRENGTH AT THE TIME OF TRANSFER OF PRESTRESSED FORCE SHALL BE 4500 psi OR GREATER.

CONCRETE IN BUILD-UP: BUILD-UP CONCRETE SHALL MEET OR EXCEED THE CONCRETE DESIGN REQUIREMENTS OF THE ORIGINAL PILE. BUILT-UP CONCRETE NOT MEETING THE ABOVE REQUIREMENTS SHALL BE REMOVED AND REPLACED AT NO DIRECT PAY.

PRESTRESSING STEEL: PRETENSIONED REINFORCEMENT SHALL BE 1/2" DIA. SEVEN-WIRE, UNCOATED LOW-RELAXATION, GRADE 270 AND SHALL CONFORM TO THE REQUIREMENTS OF AASHTO M203. AN INITIAL TENSION OF 30,980 LBS. SHALL BE APPLIED TO EACH STRAND.

DEFORMED REINFORCING STEEL: REINFORCING STEEL SHALL BE DEFORMED BILLET STEEL BARS, GRADE 60 AND SHALL MEET THE REQUIREMENTS OF AASHTO M31.

SPIRAL REINFORCING STEEL: SPIRAL REINFORCEMENT SHALL BE SIZE W-4.5 COLD-DRAWN STEEL WIRE AND SHALL CONFORM TO AASHTO M 32M.

FABRICATION TOLERANCES: MANUFACTURE OF THE PILING AND FABRICATION TOLERANCES SHALL BE IN ACCORDANCE WITH THE "MANUAL FOR QUALITY CONTROL FOR PLANTS AND PRODUCTION OF STRUCTURAL PRECAST CONCRETE PRODUCTS (MNL-116, LATEST EDITION)" PUBLISHED BY PCI.

CHAMFERS AND CORNERS: ON PILES 18" Ø OR SMALLER, ALL EXPOSED CONCRETE CORNERS ARE TO HAVE 3/4" CHAMFERS. ON PILES 20" Ø OR LARGER, ALL EXPOSED CONCRETE CORNERS ARE TO HAVE 1 1/2" CHAMFERS. A 1" RADIUS CURVE WILL BE PERMITTED IN LIEU OF CHAMFERS SHOWN ABOVE. HOWEVER, ALL PILES FURNISHED SHALL BE OF THE SAME CONFIGURATION.

PICK-UP AND HANDLING: LOADING CRITERIA ARE BASED ON CAREFUL HANDLING OF THE PILE. ROTATION OF THE PILE IN THE SLING IS TO BE PREVENTED UNTIL THE PILE IS IN THE VERTICAL POSITION. PICK-UP POINTS FOR ALL PILES ARE TO BE CLEARLY MARKED ON PILES. SUPPORTS FOR STORAGE SHALL BE AT PICK-UP POINTS (FOR 1-POINT PICK-UP USE SUPPORT 0.29L₁ FROM EACH END). PILES WILL BE MADE AT A CENTRAL PLANT AND BE TRANSPORTED TO THE BRIDGE SITE. ALL PRESTRESSED PILING SHALL BE HELD AT THE PLANT FOR 14 DAYS AFTER CASTING, PROVIDING THE COMPRESSIVE STRENGTH OF 6000 psi HAS BEEN ATTAINED. PICK-UP POINTS SHOWN MAY BE MODIFIED FOR TRANSPORTATION PURPOSES, PROVIDED THE PILE STRESSES ARE IN ACCORDANCE WITH DESIGN CRITERIA. THE MODIFIED PICK-UP POINTS SHALL BE SENT TO THE BRIDGE DESIGN ENGINEER FOR REVIEW. ALL EMBEDDED LIFTING LOOPS SHALL BE PROVIDED WITH 2" DEEP FOAM BLOCKOUTS. PRIOR TO TRANSPORT, LIFTING LOOPS SHALL BE REMOVED TO PROVIDE 2" MINIMUM CLEAR COVER. THE REMAINING CAVITIES SHALL BE CLEANED OF ALL SLAG AND LOOSE MATERIAL, AND THEN FILLED WITH A PATCHING MATERIAL FROM QPL NO. 49. THE PATCHING MATERIAL MUST MEET OR EXCEED PILE CONCRETE REQUIREMENTS FOR STRENGTH AND PERMEABILITY.

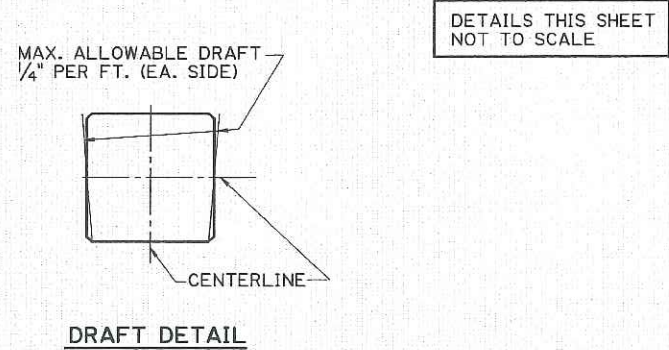
VENT HOLES: FOR VOIDED PILES THAT REQUIRE BUILD-UP OR CUT-OFF, THE 2" Ø VENT HOLES SHALL BE RE-ESTABLISHED AT 6" BELOW THE BOTTOM OF THE BENT CAP.

SHOP DRAWINGS: ANY DEVIATION FROM THE DETAILS SHOWN ON THIS SHEET, OR ANY DESIGN CHANGES MADE TO PILES, SHALL REQUIRE SHOP DRAWINGS TO BE SUBMITTED TO THE BRIDGE DESIGN ENGINEER FOR REVIEW AND APPROVAL PRIOR TO FABRICATION.

PRESTRESS LOSSES: BASED ON "RECOMMENDATION FOR ESTIMATING PRESTRESSED LOSSES" PCI JOURNAL VOL. 20 JULY/AUGUST, 1975. PERCENT OF ULTIMATE SHRINKAGE EQUAL TO 31% AND 62% FOR 14 DAYS AND 90 DAYS RESPECTIVELY. PERCENT ULTIMATE CREEP EQUAL TO 26% AND 51% FOR 14 DAYS AND 90 DAYS RESPECTIVELY.

ALLOWABLE STRESSES: THE MAXIMUM LENGTHS FOR PICK-UP HAVE BEEN DETERMINED USING THE FOLLOWING ALLOWABLE STRESS (2007 AASHTO LRFD BRIDGE SPECS. 5.9.4.2.1, 5.9.4.2.2 & 5.13.4.4.3) AT BOTH 14 DAYS AND 90 DAYS.

ALLOWABLE TENSILE STRESS (ksi): $0.19\sqrt{f'_c}$
 ALLOWABLE COMPRESSIVE STRESS (ksi): $0.45f'_c$
 IMPACT FACTOR: 1.5
 MIN. FINAL COMPRESSIVE STRESS: 0.7 ksi



SHEET NUMBER	PARISH	FEDERAL PROJECT	STATE PROJECT
DESIGNED: J. NAKHLEH	CHECKED: P. FOSSIER	DATE: 8/03/2011	SHEET: 2 OF 2
DETAILS: D. HYMEL	CHECKED: J. NAKHLEH	BY:	DATE:
REVISION DESCRIPTION			
NO.			
DATE			
PRECAST-PRESTRESSED CONCRETE PILES 12, 14, 16, 18, 20 AND 24 INCH SOLID 24, 30 AND 36 INCH VOIDED CLASS (PM) CONCRETE			
BRIDGE AND STRUCTURAL DESIGN			

NON-MANDATORY PRE-BID CONFERENCE
ATTENDANCE RECORD

PROJECT: Franklin Canal Flood Protection System – Phase II Pump Station (TV-52)

AGENCY: CPRA



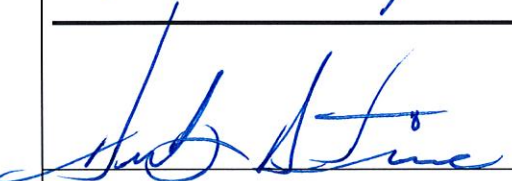
DATE: May 21, 2014

LOCATION: Franklin Court House – St. Mary Parish Government Building

500 Main St, 5th Floor, Council Meeting Room

Franklin, LA 70538-6198

Please Print Clearly

Name and Signature (Sign-In)	Company/Address	Phone No.	Fax No. and Email	Name and Signature (Sign-Out)
STAN AUCOIN	CPRA / LAF	337-482-0681	STANLEY.AUCOIN@LA.GOV	
				
KEN LABRY	FENSTERMAKER LAFAYETTE	337-237-2500 EXT 1189	ken@fenstermaker.com	
				
	WANKISHA PENNEC POMERAY, LA	337-380-8533	antoh@wp.com	

NON-MANDATORY PRE-BID CONFERENCE
ATTENDANCE RECORD

PROJECT: Franklin Canal Flood Protection System – Phase II Pump Station (TV-52)

AGENCY: CPRA

DATE: May 21, 2014

LOCATION: Franklin Court House – St. Mary Parish Government Building
500 Main St, 5th Floor, Council Meeting Room
Franklin, LA 70538-6198

Please Print Clearly

Name and Signature (Sign-In)	Company/Address	Phone No.	Fax No. and Email	Name and Signature (Sign-Out)
Bradley Faulk <i>Brad Faulk</i>	CAJUN Maritime	337-893-3686	337-893-3683 brad.faulk@cajunusa.com	
DAN GRAY <i>Dan Gray</i>	GRAY CONSTRUCTION	985-399-2401	985-399-2405 dcgray@gray-con.com	
Bruce Duhon	James Const Group	225-295-4830	bduhon@jegllc.com	

NON-MANDATORY PRE-BID CONFERENCE
ATTENDANCE RECORD

PROJECT: Franklin Canal Flood Protection System – Phase II Pump Station (TV-52)

AGENCY: CPRA

DATE: May 21, 2014

LOCATION: Franklin Court House – St. Mary Parish Government Building
500 Main St, 5th Floor, Council Meeting Room
Franklin, LA 70538-6198

Please Print Clearly

Name and Signature (Sign-In)	Company/Address	Phone No.	Fax No. and Email	Name and Signature (Sign-Out)
Oscar Perez	9074 Park Ave Houma, La	985-851-7077 985-381-6066	oscar@associatedpump.com	
BEN ROTH, III	1069 Hwy 3185 THIBODANX 70301	985-448-0970	ataylor@ sealenelect inc. com	B R Roth, III
Don Torres	PO Box 268 Plattenville, LA 70393 RES Contractors	985-252-3400	985-252-3400 dtorres@res-usa.net	DT
Will Norman	CPRA-PM Contractor	225-663-3037	norman@cdmsmith.com	Will Norman

NON-MANDATORY PRE-BID CONFERENCE
ATTENDANCE RECORD

PROJECT: Franklin Canal Flood Protection System – Phase II Pump Station (TV-52)

AGENCY: CPRA

DATE: May 21, 2014

LOCATION: Franklin Court House – St. Mary Parish Government Building

500 Main St, 5th Floor, Council Meeting Room

Franklin, LA 70538-6198

Please Print Clearly

Name and Signature (Sign-In)	Company/Address	Phone No.	Fax No. and Email	Name and Signature (Sign-Out)
<p>JEFF LEADY <i>[Signature]</i></p>	<p>FLUID PROCESS PUMPS, LLC 405 COMMERCE PT HARRAHAN, LA 70123</p>	<p>504-733-1350</p>	<p>FAX 504-736-9348 JL@FLUIDPROCESS.NET</p>	

>

General Decision Number: LA140006 03/14/2014 LA6

Superseded General Decision Number: LA20130006

State: Louisiana

Construction Type: Heavy

Counties: Allen, Assumption, Avoyelles, Beauregard, Bienville, Caldwell, Cameron, Catahoula, Claiborne, Concordia, De Soto, East Carroll, East Feliciana, Evangeline, Franklin, Grant, Iberia, Iberville, Jackson, Jefferson Davis, La Salle, Lincoln, Madison, Morehouse, Natchitoches, Pointe Coupee, Red River, Richland, Sabine, St Helena, St Mary, Tangipahoa, Tensas, Union, Vermilion, Vernon, Washington, West Carroll, West Feliciana and Winn Counties in Louisiana.

HEAVY CONSTRUCTION PROJECTS (includes water wells, water & sewer lines, and flood control; excludes elevated storage tanks)

Modification Number	Publication Date
0	01/03/2014
1	01/10/2014
2	01/24/2014
3	02/07/2014
4	02/28/2014
5	03/07/2014
6	03/14/2014

ELEC0130-007 12/01/2013

ASSUMPTION AND ST. MARY (Northeast of Atchafalaya River) PARISHES

	Rates	Fringes
ELECTRICIAN.....	\$ 29.35	9.51

* ELEC0194-006 09/02/2013

BIENVILLE, CLAIBORNE, DE SOTO, NATCHITOCHEs (Northeast of the Red River), and RED RIVER PARISHES

	Rates	Fringes
ELECTRICIAN Lineman and Heavy Equipment Operator.....	\$ 25.50	3%+9.05

ELEC0446-004 03/01/2014

CALDWELL, EAST CARROLL, FRANKLIN, JACKSON, LINCOLN, MADISON, MOREHOUSE, RICHLAND, TENSAS, UNION, and WEST CARROLL PARISHES

	Rates	Fringes
ELECTRICIAN.....	\$ 21.75	1%+9.64

ELEC0576-002 09/01/2013

AVOYELLES, CATAHOULA, CONCORDIA, EVANGELINE, GRANT, LA SALLE,
NATCHITOCHEs (Southwest of Red River), SABINE, VERNON, AND WINN
PARISHES

	Rates	Fringes
ELECTRICIAN.....	\$ 24.00	4.25%+5.65

ELEC0861-004 01/01/2014

ALLEN, BEAUREGARD, CAMERON, IBERIA, JEFFERSON DAVIS, ST. MARY
(Southwest of Atchafalaya River), AND VERMILION PARISHES

	Rates	Fringes
ELECTRICIAN.....	\$ 24.50	4%+10.23

ELEC0995-002 01/01/2014

EAST FELICIANA, IBERVILLE, POINTE COUPEE, ST. HELENA, AND WEST
FELICIANA PARISHES

	Rates	Fringes
ELECTRICIAN.....	\$ 23.16	9.47

ELEC1077-005 09/01/2012

TANGIPAHOA and WASHINGTON PARISHES

	Rates	Fringes
ELECTRICIAN.....	\$ 22.50	7.17

SULA2004-008 05/19/2004

	Rates	Fringes
CARPENTER (including formsetting/formbuilding).....	\$ 14.75	0.00
Laborers:		
Common.....	\$ 7.60	0.00
Pipelayer.....	\$ 8.47	0.00
PIPEFITTER (excluding pipelaying).....	\$ 18.75	4.05

Power equipment operators:

Backhoe/Excavator.....	\$ 11.67	0.00
Boring Machine.....	\$ 10.25	0.00
Bulldozer.....	\$ 11.82	0.00
Crane.....	\$ 13.60	0.00
Dragline.....	\$ 13.12	0.00
Front End Loader.....	\$ 9.93	0.00
Mechanic.....	\$ 12.50	0.00
Trackhoe.....	\$ 11.99	0.00
Tractor.....	\$ 10.43	0.00
Water Well Driller.....	\$ 10.73	2.01

Truck drivers:

Dump.....	\$ 10.00	0.00
Water.....	\$ 8.00	0.00

WELDERS - Receive rate prescribed for craft performing operation to which welding is incidental.

=====

Unlisted classifications needed for work not included within the scope of the classifications listed may be added after award only as provided in the labor standards contract clauses (29CFR 5.5 (a) (1) (ii)).

The body of each wage determination lists the classification and wage rates that have been found to be prevailing for the cited type(s) of construction in the area covered by the wage determination. The classifications are listed in alphabetical order of "identifiers" that indicate whether the particular rate is union or non-union.

Union Identifiers

An identifier enclosed in dotted lines beginning with characters other than "SU" denotes that the union classification and rate have found to be prevailing for that classification. Example: PLUM0198-005 07/01/2011. The first four letters , PLUM, indicate the international union and the four-digit number, 0198, that follows indicates the local union number or district council number where applicable , i.e., Plumbers Local 0198. The next number, 005 in the example, is an internal number used in processing the wage determination. The date, 07/01/2011, following these characters is the effective date of the most current negotiated rate/collective bargaining agreement which would be July 1, 2011 in the above example.

Union prevailing wage rates will be updated to reflect any changes in the collective bargaining agreements governing the rates.

0000/9999: weighted union wage rates will be published annually

each January.

Non-Union Identifiers

Classifications listed under an "SU" identifier were derived from survey data by computing average rates and are not union rates; however, the data used in computing these rates may include both union and non-union data. Example: SULA2004-007 5/13/2010. SU indicates the rates are not union majority rates, LA indicates the State of Louisiana; 2004 is the year of the survey; and 007 is an internal number used in producing the wage determination. A 1993 or later date, 5/13/2010, indicates the classifications and rates under that identifier were issued as a General Wage Determination on that date.

Survey wage rates will remain in effect and will not change until a new survey is conducted.

WAGE DETERMINATION APPEALS PROCESS

1.) Has there been an initial decision in the matter? This can be:

- * an existing published wage determination
- * a survey underlying a wage determination
- * a Wage and Hour Division letter setting forth a position on a wage determination matter
- * a conformance (additional classification and rate) ruling

On survey related matters, initial contact, including requests for summaries of surveys, should be with the Wage and Hour Regional Office for the area in which the survey was conducted because those Regional Offices have responsibility for the Davis-Bacon survey program. If the response from this initial contact is not satisfactory, then the process described in 2.) and 3.) should be followed.

With regard to any other matter not yet ripe for the formal process described here, initial contact should be with the Branch of Construction Wage Determinations. Write to:

Branch of Construction Wage Determinations
Wage and Hour Division
U.S. Department of Labor
200 Constitution Avenue, N.W.
Washington, DC 20210

2.) If the answer to the question in 1.) is yes, then an interested party (those affected by the action) can request review and reconsideration from the Wage and Hour Administrator (See 29 CFR Part 1.8 and 29 CFR Part 7). Write to:

Wage and Hour Administrator
U.S. Department of Labor
200 Constitution Avenue, N.W.

Washington, DC 20210

The request should be accompanied by a full statement of the interested party's position and by any information (wage payment data, project description, area practice material, etc.) that the requestor considers relevant to the issue.

3.) If the decision of the Administrator is not favorable, an interested party may appeal directly to the Administrative Review Board (formerly the Wage Appeals Board). Write to:

Administrative Review Board
U.S. Department of Labor
200 Constitution Avenue, N.W.
Washington, DC 20210

4.) All decisions by the Administrative Review Board are final.

=====
END OF GENERAL DECISION