

**ADDENDUM 02 TO BID DOCUMENTS  
FOR  
LIVING SHORELINE DEMONSTRATION PROJECT  
(PO-148)  
ST. BERNARD PARISH, LOUISIANA**



**STATE OF LOUISIANA  
COASTAL PROTECTION AND RESTORATION AUTHORITY**

**OCTOBER 29, 2015**



**ADDENDUM 02 TO BID DOCUMENTS  
LIVING SHORELINE DEMONSTRATION PROJECT  
(PO-148)**

**The clarifications and revisions in this addendum supersede the requirements in the Bid Documents dated September 2015. The Successful bidder will be issued a complete revised set of plans and specifications.**

**1. PRE-BID MEETING SIGN-IN SHEETS**

The Mandatory Pre-Bid Conference Attendance Record is provided in Attachment A.

**2. RESPONSE TO CONTRACTOR QUESTIONS**

- 2.1. QUESTION: Would it be possible to obtain a copy of the attendee list for Tuesday's pre-bid meeting for PO-0148, the Living Shoreline Demonstration Project.

ANSWER: The Mandatory Pre-Bid Conference Attendance Record is provided in Attachment A.

- 2.2. QUESTION: Will there be payment for stored materials once manufacturers are at critical milestones in their production?

ANSWER: See Addendum 2 Item 3.7 below.

- 2.3. QUESTION: Due to the sole sourcing nature of the manufactured product, could CPRA require the manufacturers to bond their portion of the work?

ANSWER: Requirements for bid security, performance, and payment bonds for this Project are set forth in the Bid Documents, including but not limited to, Article 5.2 and Article 8 of the Instructions to Bidders.

- 2.4. QUESTION: Can the manufacturers be forced to agree to liquidated damages if they don't hit their schedule?

ANSWER: The Contractor shall be responsible to the Owner for the performance of the work and the use and coordination of trades and subcontractors in accordance with all terms and conditions contained in the Bid Documents, including but not limited to, GP-19, GP-20, and GP-31.

- 2.5. QUESTION: Will the manufacturer's pricing to the contractors be made public?

ANSWER: The manufacturer has provided a statement of pricing that is available in Appendix G of the Bid Documents.

- 2.6. QUESTION: Is it possible to provide pricing for the biologist on a weekly or daily

basis? There is a chance that the biologist could be on site for the initial two weeks prior to beginning deployment and not be needed for the rest of the project. On the other hand he may be needed for the entire duration of deployment.

ANSWER: Payment for all requirements of TS-6 will be as stated in TS-6.11.

- 2.7. QUESTION: The permanent navigation aid. Pipe Pile coating. How much of the pipe is required to be coated? Does the inside wall of the pipe require coating as well?

ANSWER: See Addendum 2 Items 3.18 and 3.19 below.

- 2.8. QUESTION: Wanted to follow up on last Tuesday Meetings with finding a way to pay for stored deliverables. LSS would have to commit \$1.3-1.7 million in manufacturing and delivery of all the required WADs for Base bid and alternate bids many months before getting any return. We would be at mercy of getting paid until deployment contractor got them in the water. We are a small business and know that other contractors will be unable to participate because of this. As we discussed. We recommend that WADs and other products get inspected and accepted at storage facility or mobilization site awaiting deployment. When accepted by your engineers, then we can invoice and receive a significant % of the total with the final percentage paid at completion of project. This has been done for several similar projects we have done in the State. Thanking you in advance for your consideration on this.

ANSWER: See Addendum 2 Item 3.7 below.

- 2.9. QUESTION: If there is not a provision added for stored materials, what is the receipt of funds expected to be in an approved billing cycle?

ANSWER: See Addendum 2 Item 3.7 below.

- 2.10. QUESTION: The stored materials billing cycle for contractors is going to be based on what timeline? Once a month, every two weeks?

ANSWER: Request for payment for stored materials per Addendum 2 Item 3.7 below shall be part of contractors application for payment per GP-59.

- 2.11. QUESTION: The Living Shoreline Demonstration Project mentions in the specs that the project requires a qualified biologist familiar with protected birds. I was wondering if you could provide contact information for a few such biologists.

ANSWER: See TS-6.8.2.1 for requirements for qualified biologists. CPRA is precluded from recommending a specific biologist or firm.

- 2.12. QUESTION: The spec for the navigation aids are the Tideland L-120 Self-contained 2NM lantern, Tideland is strongly suggesting using the SolaMax-3 as it the latest version of the L-120.

ANSWER: Navigation aid light shall remain as specified in TS-13 and Plan Sheet 29.

2.13. QUESTION: We believe that specs listed for WAD were pulled from a form fabricators drawing that were submitted for discussion purposes but weights and wall thickness were pulled from that sample drawing. We submitted official spec via a TS-8 submittal. Respectfully request that paragraph 10.5.2 be changed to reflect Unit weight: Greater than or equal to 7200 lbs. and less than 9150 lbs. additional request 10.5.1.1 be changed to reflect a minimum 4" wall thickness as per submitted TS-8. I believe the numbers reflected were pulled from a sample engineering drawing of one of our fabricators. We had no WAD weights presented in our submitted TS-8 Coastal Haven Spec.

ANSWER: Please see Addendum 2 Items 3.11, 3.12, and 4.1.

2.14. QUESTION: Can paragraph 7.9.2, under 7.9 Temporary Navigation Aid (page 76 of 137) be clarified? Is the contractor responsible for obtaining a permit from the US Coast Guard and/or the US Army Corps of Engineers for all temporary dredging and disposal?

ANSWER: Please see Addendum 2 Item 3.8.

2.15. QUESTION: How will the state tax and local tax be applied or exempted for manufacturer's products, within the project?

ANSWER: Taxes will be treated as stated under GP-34.

2.16. QUESTION: How is the contractor supposed to determine which anchor to use. It is calling out that it's up to the contractor to select an anchor that will hold up to 5,000 psi depending on soil conditions. Shouldn't this be something the engineer should determine and spec out an anchor to be used?

ANSWER: Anchors must meet performance requirements as specified in TS-12.8 and on Plan Sheet 21. Results from a geotechnical investigation of the site are provided in Appendix E. Details of proposed anchoring must be submitted to Engineer per TS-12.2.1.10.

2.17. QUESTION: Can the bottom be disturbed while setting reef blocks? Using a marsh excavator to set these units.

ANSWER: The water bottom shall not be disturbed during access to the work area, other than that shown on the Plans. See TS-3.2, and for more detail, see Appendix F, Louisiana Coastal Use Permit condition 11.a.

2.18. QUESTION: The Geotextile Fabric ( Table 1 ) has the Geogrid properties and the Geogrid ( Table 2 ) has the properties for the Geotextile.

ANSWER: See Addendum 2 Item 3.9.

2.19. QUESTION: I have searched for a Geotextile that will meet the 15% Open area and have not been able to find one. Do you have an example of a product that will meet all of the properties in your spec? Also neither one of the tables list the test methods used for each property.

ANSWER: See Addendum 2 Item 3.9.

2.20. QUESTION: Please clarify if the determination to include or delete the performance of Alternate Bid Items will be made at the time of contract award.

ANSWER: 2. The Contractor will be notified of the accepted Alternate Bid Items when the Contract is awarded

2.21. QUESTION: Please allow payment for offsite materials. It seems the contract has provided ample owner assurance through the requirements to provide Payment & Performance Bonds as well as including a 5% retainage clause.

ANSWER: Request for payment for stored materials per Addendum 2 Item 3.7 below shall be part of contractors application for payment per GP-59.

2.22. QUESTION: The stated no work distances basically encompass the entire landside area between Lake Eloi and Eloi Bay which is adjacent to the Base Bid jobsite. This results in over 500 acres of area that would need to be patrolled twice daily whether or not the contractor is working. Will marsh buggies, air boats, mud boats or other equipment be allowed to traverse the land area adjacent to the Base and Alternate jobsites in order to perform the required patrolling?

ANSWER: No.

### 3. REVISIONS TO THE GENERAL PROVISIONS, SPECIAL PROVISIONS, AND TECHNICAL SPECIFICATIONS

Provision/Specification language modifications are **bolded** and inclusion and/or revision are shown in *italics*; deletions are show in ~~strike through~~.

3.1. SP-6. ADDRESSES FOR DOCUMENT DELIVERY – the contact information for the CPRA Field Engineer shall be changed to the following:

CPRA Field Engineer  
David Chambers, PE  
2045 Lakeshore Drive, *CERM Bldg*, Suite 309  
New Orleans, LA 70122  
Phone: (504) 280-**4069**  
Fax: (504) 280-4066  
E-mail: *David.Chambers@la.gov*

3.2. SP-4. MILESTONES – the specification has been revised as follows (note: only rows with changes are shown in addendum):

Milestone	Location or Recipient	Date Due	Specification
Project Schedule	Engineer	14 days prior to Pre-construction conference; updated and submitted at each Progress Meeting	<b>GP-9 and SP-5.6</b>

3.3. SP-5. DELIVERABLES, 5.7.2, has been revised as follows:

5.7.2 Progress Schedule as specified in **GP-9 and SP-5.6**;

3.4. SP-5. DELIVERABLES, 5.8.2, has been revised as follows:

5.8.2 Progress Schedule as specified in **GP-9 and SP-5.6**;

3.5. SP-5. DELIVERABLES, 5.12.4, has been revised as follows (note: only rows with changes are shown in addendum):

5.12.4 The following table is a summary of submittals required of the Contractor as part of this section and other sections of these Specifications:

Table 1 Summary of Submittals

Submittal	Location or Recipient	Date Due	Specification
Progress Schedule	Engineer	14 days prior to the Pre-Construction Conference	<b>GP-9 and SP-5.6</b>
Work Plan and Schedule Updates	Engineer	Pre-Construction Conference	<b>GP-9 and, SP-5.6, SP-7</b>
Progress Schedule	Engineer	During Construction; with every bi-weekly progress meeting	<b>GP-9 and SP-5.6</b>

3.6. SP-7. WORK PLAN SUPPLEMENTAL, 7.8, has been modified as follows

7.8 Construction schedule per **GP-9 and SP-5.6**;

3.7. Add SP-28, as follow:

**SP-28 PAYMENT FOR STORED MATERIALS**

**28.1 - General:**

*If approved by the Owner, payments may be made for stored material, limited to*

*manufactured artificial reef units, including Oysterbreak Units, WAD Units, Reef Ball Units, and ReefBLK Units, that will be incorporated into the project and which represent a significant portion of the project costs. Such material shall be stored on the project site or, with prior approval by the Owner, in a dedicated stockpile located at a site outside of the designated project site. Payments for stored material will be considered only for materials anticipated to be stored for periods in excess of 30 calendar days. All stored materials shall meet the requirements of the plans and specifications and the Owner reserves the right to inspect stored materials. Payment for stored materials does not constitute acceptance by the Owner. It shall be the Contractor's responsibility to protect the material from damage while in storage.*

**28.2 - Request and Payment:**

*Payment for stored materials will be based on the invoice price for the materials. The amounts advanced on stored materials will be recovered by the Owner through deductions made on payments as the materials are incorporated into the work. The quantity of material for payment shall not exceed sixty five percent (65%) of the total bid quantity for each artificial reef Bid Item required to complete the project (base and any awarded alternates).*

*Payment for stored materials shall be requested by the Contractor in writing with their monthly application for payment per GP-59 and the following shall also be furnished to the Owner:*

- (1) A copy of the invoices from supplier or manufacturer verifying the cost and quantity of material; and*
- (2) If the proposed storage is located on private property, a copy of the lease or agreement granting the Contractor permission to store materials on that site, including permission granting the Owner and Resident Project Representative right of entry to the property; and*
- (3) An acknowledgement from the Contractor of his continuing risk of loss and written notice from the Contractor's surety indicating consent to payment for stored materials.*

*Within 30 calendar days after payment by the Owner, the contractor shall submit a certified copy of invoices from the supplier for each item for which payment has been made. All such invoices submitted shall state the amount received by the supplier as payment in full for the materials. If this certification of payment is not presented within the 30-day period, the advanced payment will be deducted from future progress payments.*

*All submittals shall be made in accordance with GP-41 and SP-5.*

**28.3 - Ownership:**

*Ownership of stored materials for which payment has been made shall not transfer to the Owner until such materials are incorporated into the work and the Owner has accepted the completed work. Payments issued by the Owner for stored materials pursuant to this Provision shall not release the Contractor from the responsibility for any portion thereto nor shall such payments relieve the Contractor from any other obligation contained in this*

**Contract.**

3.8. TS-7 ACCESS AND FLOATATION CHANNELS, 7.9 Temporary Navigation Aids – paragraph 7.9.2 has been revised as follows:

7.9.2 The Contractor shall obtain a permit from the U.S. Coast Guard ~~and/or the US Army Corps of Engineers~~ **for all temporary navigation aids required for** temporary dredging and temporary disposal, ~~or navigation aid markers~~ to be placed in the water prior to construction in the vicinity of the temporary disposal site and other works for the duration (and at any point during the performance) of the construction work.

3.9. TS-8 GEOTEXTILE AND GEOGRID, 8.5.4 Material – the specification has been revised as follows:

8.5.4 Material shall meet the physical property shown in Table 1 and Table 2.

Table 1 – Physical Requirements of ~~Geogrid~~ **Geotextile Fabric**

Property	Test	Units	Values - Machine Direction	Values - Cross Machine Direction
True 1% Tensile Modulus in Use (MD)	<i>ASTM D-6637</i>	kN/m (lb/ft)	410 (28,100)	420 (28,780)
Junction Strength (MD)	<i>ASTM D-7737</i>	kN/m (lb/ft)	21.5 (1,474)	21.5 (1,474)
Flexural Stiffness	<i>ASTM D-1388 (Option A)</i>	mg-cm	750,000	
Torsional Stiffness	<i>USACE- Torsional Rigidity</i>	kg-cm/deg	6.0	
Resistance to Installation Damage	<i>ASTM D-5818</i>	%GP	71	
Resistance to Long Term Degradation	<i>EPA 9090</i>	%	98	
Ultraviolet Stability (Retained Strength @ 500 hours)	<i>ASTM D-4355</i>	%	98	

Table 2 – Physical Requirements of ~~Geogrid~~ **Geotextile Fabric**

Property	Test	Units	Values - Machine Direction	Values - Cross Machine Direction
Puncture Strength	<i>ASTM D-6241</i>	kN (lbs)	≥ 0.47 (105)	
Trapezoidal Tear	<i>ASTM D-4533</i>	kN (lbs)	≥ 0.51 (115)	≥ 0.33 (75)
Percent Open Area	<i>USACE-02215</i>	%	≤ 15	
Apparent Opening Size (AOS)	<i>ASTM D-4751</i>	US Sieve	≤ 40	
Permittivity	<i>ASTM D-4491</i>	Sec-1	≤ 2.1	
Ultraviolet Stability (Retained Strength @ 500 hours)	<i>ASTM D-4355</i>	%	≥ 90	

3.10. TS-9 OYSTERBREAK UNITS, 9.4.1 Manufacturer Qualifications – the specification has been revised as follows:



Mr. Mike Turley  
Wayfarer Environmental Technologies, LLC  
PO Box 11937, New Iberia, LA 70563  
**Phone: (225) 916-6382**  
mike@wayfarertech.com  
<http://www.wayfarertech.com/>

3.11. TS-10 COASTAL HAVEN WAVE ATTENUATION DEVICES (WAD), 10.5.2.1 – the specification has been revised as follows:

10.5.1.1 WAD units are constructed of 5,000 psi marine grade concrete reinforced with fibermesh, shall have at least three (3) solid walls, approximately ~~6.0~~ **4.0** inches thick. WAD walls shall be either smooth or corrugated as shown on the Plans. Walls on the corrugated WADs shall be horizontally corrugated on one face of the WAD and vertically corrugated on back two side walls, as shown on Plans. Walls are to be tapered with lower portion of the WADs having an approximate 11.0 foot dimension from projected point to projected point (9.5 foot actual base length), rising 5.0 feet in height to a 4.55 foot table. WADs shall have an open bottom and an enclosed top wall with an opening. Side walls shall have triangular tapered openings. WAD units are to be fabricated as detailed on the Plans.

3.12. TS-10 COASTAL HAVEN WAVE ATTENUATION DEVICES (WAD), 10.5.2.1 – the specification has been revised as follows:

10.5.2.1 Unit Weight: greater than or equal to ~~8,000~~ **7,200** lbs and less than 9,150 lbs.

3.13. TS-11 REEF BALL UNITS, 11.5.1.3 – the specification has been revised as follows:

11.5.1.3 Two hole configurations shall be used. Type 1 will consist of the manufacturer's standard Reef Ball hole pattern utilizing *up to* 22 holes per Reef Ball, *or per manufacturer recommendations and Engineer's approval*. Hole size and location shall be set per manufacturer's instructions. Type 2 will consist of a Reef Ball hole pattern utilizing 4 holes which should be spaced approximately mid-unit high and approximately equally around the unit perimeter.

3.14. TS-11 REEF BALL UNITS, 11.5.2.1 – the specification has been revised as follows:

11.5.2.1 Unit Weight: greater than or equal to ~~4,000~~ **3,500** lbs and not to exceed 8,000 lbs.

3.15. TS-12 REEFBLK UNITS, 12.3.1 Manufacturer Qualifications – the specification has been revised as follows:

12.3.1 Manufacturer Qualifications: Manufacturer shall be Coastal Environments, Inc (CEI) ~~or an approved equal. Engineer must approve equivalent manufacturer 72~~

~~hours prior to bid date.~~ CEI contact information:

3.16. TS-12 REEFBLK UNITS, 12.7.2 – the specification has been revised as follows:

12.7.2 Aggregate shall be ~~#57~~ #4 crushed limestone.

3.17. TS-12 REEFBLK UNITS, 12.19.1 – the specification has been revised as follows:

12.19.1 ~~Reef Ball~~ *ReefBLK* Units will be accepted by the Owner based on the in-place condition. It is the responsibility of the Contractor to deliver and install the ReefBLK Units in an undamaged state.

3.18. TS-16 COATINGS, 16.9.1.2 – the specification has been revised as follows:

16.9.1.2 All surfaces of the round piles and fabrications shall be coated with the coating system specified herein. *Piles do not require coating on the inside.*

3.19. TS-16 COATINGS, the following paragraph has been added:

*16.9.1.3 Coating is required to an elevation, at a minimum, 5 ft below the mudline for the installed pile.*

#### **4. REVISIONS TO THE PLANS**

4.1. Sheet 22 – WAD UNIT DETAILS: Wall thickness on Section A modified to 4” thick wall, typical. Revisions are included in Attachment B.

4.2. Sheet 28 – OYSTERBREAK LAYOUT: Section A is mirrored to show two pegs of the top Oysterbreak units facing seaward to match Detail 1, and Detail 3 is modified to show revised Oysterbreak spacings. Revisions are included in Attachment B.

# Attachment A

## Mandatory Pre-Bid Conference Attendance Record

# MANDATORY PRE-BID CONFERENCE ATTENDANCE RECORD



**PROJECT NAME:** LIVING SHORELINE DEMONSTRATION PROJECT,  
ST. BERNARD PARISH, LOUISIANA

**PROJECT No.:** PO-0148

**DATE:** OCTOBER 20, 2015

**LOCATION:** LINDY C. BOGGS INTERNATIONAL CONFERENCE CENTER,  
ROOM 236, UNO, 2045 LAKESHORE DRIVE, NEW ORLEANS,  
LA 70122

**PROJECT ENGINEER:** TYE FITZGERALD, P.E.

**PROJECT MANAGER:** MICAELA CONER

**CONSTRUCTION ENGINEER:** DAVID CHAMBERS, P.E.

**ENGINEER OF RECORD:** JOSH CARTER, P.E.

NAME/SIGNATURE (SIGN-IN)	COMPANY NAME	COMPANY ADDRESS	PHONE NO.	E-MAIL ADDRESS	NAME/SIGNATURE (SIGN-OUT)
Micaela Coner <i>Micaela Coner</i>	CPRA	450 Laurel Ave BR, LA 70802	225-342-1952	micaela.coner@la.gov	<i>Micaela Coner</i>
Bernard Escovar <i>Bernard Escovar</i>	Callan Marine	4600 Old Point Calveston, TX. Industrial Rd.	337-294-1485	MRB. @ callan marine LTD.com	<i>Bernard Escovar</i>
DARELL BENOIT <i>Darell Benoit</i>	QUALITY FIRST MARINE	2160 8 <sup>th</sup> St, Suite B MANDVILLE, LA 70471	985-302-9348	dbenoit@qualityfirstmarine.com	<i>Darell Benoit</i>
JERRY DEVILLE <i>Jerry Deville</i>	WEEKS MARINE	304 GAILLE DR COUINGTON, LA 70433	985-875-2500	JCDEVILLE@weeksmarine.com	<i>Jerry Deville</i>

# MANDATORY PRE-BID CONFERENCE ATTENDANCE RECORD



NAME/SIGNATURE (SIGN-IN)	COMPANY NAME	COMPANY ADDRESS	PHONE NO.	E-MAIL ADDRESS	NAME/SIGNATURE (SIGN-OUT)
Thomas J Brown	LSS	12444 GRAND TRAVENSE DR DADE CITY FL	352-5885263	T.BROWN@LIVINGSHORELINE-SOLUTIONS.COM	[Signature]
Brady Richard	Tetra Tech	740 Main Street, Suite B Baton Rouge, LA	225-383-7440 / 1780	Brady.Richard@Tetrattech.com	Brady Richard
Tye Fitzgerald	CPRA	450 Laurel Ave Baton Rouge, LA	225-342-6507	tye.fitzgerald@la.gov	Tye Fitzgerald
Justin Merrifield	CPRA	Baton Rouge Office	225-342-4629	Justin.Merrifield@LA.gov	[Signature]
Josh Carter	Hatch Mott MacDonald	650 Poydras Ste 2025 New Orleans LA 70130	504 383 9785	josh.carter@hatchmott.com	[Signature]
Joshua Todd	Hatch Mott MacDonald	650 Poydras Ste 2025 New Orleans LA 70130	504 383 9776	joshua.todd@hatchmott.com	[Signature]
Lonnie Dunn	Luhr Bros, Inc	P.O. Box 7886 Alexandria LA 71306	318 487-9263	lonnie@luhralex.com	[Signature]
Tim Vestal	WEEKS MARINE INC.	304 GAILLE DR COVINGTON, LA 70433	985-991 9053	TVESTAL@WEEKSMARINE.COM	[Signature]

# MANDATORY PRE-BID CONFERENCE ATTENDANCE RECORD



NAME/SIGNATURE (SIGN-IN)	COMPANY NAME	COMPANY ADDRESS	PHONE NO.	E-MAIL ADDRESS	NAME/SIGNATURE (SIGN-OUT)
Danny Delahoussaye 	MAGELLAN/DLS	101 RUE IBERVILLE LAFAYETTE LA 70508	337 856-0034	danny@magellan-llc.com	
Jhy Leblanc 	Leblanc Marine	3001 Rex J. Champagne PO Box 9959 New Iberia, LA 70560	337- 364- 4701	jhyleblanc@leblancmarine.com	
PARKER McLELLAN	PINE BLUFF SAND & GRAVEL CO.	2200 LINCOLN AVE NORTH LITTLE ROCK, AR 72114	(318) 623 8920	parker.mcclellan@pbsgc.com	
Denise Dutra	Dutra Group	2350 Kerner Blvd Suite 200 San Rafael CA, 94901	415-258 1588	ddutra@dutragroup.com	Denise Dutra
MIKE NITSKA	HYDROTEERRA	202 JACOBS RUN SCOTT, LA 70560	337-315 2190	MIKE.NITSKA@HYDROTEERRATEL.COM	
TRAVIS CUSIMANO	CAJUN MARITIME	115 CONCORD ST. ABBEVILLE LA, 70510	337-893 3686	travis.cusimano@cajunusa.com	
BLAKE DWOSKIN 	CAYO, LLC	1400 EVERMAN PKWY STE 127 FORT WORTH, TX 76140	817-568-6828 281-330-8114	bdd@cayo.us	
Tyler Origo 	ORA ECOLOGIES	413 Houma Blvd. Metairie LA 70001	225 372 5590	tyler@oraecologies.com	

# MANDATORY PRE-BID CONFERENCE ATTENDANCE RECORD



NAME/SIGNATURE (SIGN-IN)	COMPANY NAME	COMPANY ADDRESS	PHONE NO.	E-MAIL ADDRESS	NAME/SIGNATURE (SIGN-OUT)
Ralph Diaz	Boh Bros.	POB 53266 N.O. LA 70153	504 <del>8827</del> 7621	rdiaz@bohbro.com	Ralph Diaz
John F. Ross	MAGELEN/PLS	P.O. BOX 309 LYDIA LA. 70569	(837) 924-7444	john@dis-energy.com	John F. Ross
David P. Taylor	MATTHEWS BROS. MARINE	P.O. BOX 178 PASS CHRISTIAN, MS 38571	228- 452-0804	MATTHEWSBROTHERSINC.NET	David P Taylor
Murri Brecher	CSI	P.O. Box 2515 Cypress TX	713/503 8821	csi@contractorssourceinc.com	Murri Brecher
Wade Fyfe Larry Beyer	Reef Innovations	2415 McMichael St. Clod FL. 34771	941- 650- 2519	larry@reefinnovations.com	Wade Fyfe Larry Beyer
Tyler Roy	Wilco	1304 MacArthur Ave Harvey, LA 70058	337 945 8301	troyle@wilcomarshbuggies.com	Tyler Roy
Ricky Thaddeus	Beary, Eric	PO Box 253 Beaumont, LA 70542	985 384-8770	ricky@bbgc.com	Ricky Thaddeus
Taylor Roy	CENTAUR	1204 ENGINEERS RD BELLE CHASSE, LA 70037	504- 427- 4396	TAYLOR@CENTAURLLC.COM	T-R

# MANDATORY PRE-BID CONFERENCE ATTENDANCE RECORD



NAME/SIGNATURE (SIGN-IN)	COMPANY NAME	COMPANY ADDRESS	PHONE NO.	E-MAIL ADDRESS	NAME/SIGNATURE (SIGN-OUT)
DALE P. ROUCHEAUX	WAYFARER	101 DOREMUS NEW IBERIA, LA	337 578-1918	DALE@WAYFARERTECH.COM	<i>[Signature]</i>
MIKE TURLEY	WAYFARER	101 DOREMUS NEW IBERIA, LA	225 916-6382	MIKE@WAYFARERTECH.COM	<i>[Signature]</i>
Shelly Starnis	DQSI	19218 North 5th St Covington, LA	985 871-7472	Shelly@DQSI.COM	<i>[Signature]</i>
Stanley Lee	DQSI	19218 N 5th St Covington, LA 70433	813- 967-0751	Stanley@DQSI.COM	<i>[Signature]</i>
<i>[Signature]</i>	SAV Trucking	PO Box 1008 Chalmette, LA 70043	504) 999- <del>5290</del> 5290	e.wood.sav.trucking@earthlink.com	<i>[Signature]</i>
Boogie Baye	Pontchartrain Partners, LLC	650 Poydras St., Suite 2345 NEW ORLEANS, LA 70130	504-872 3199	boogie.baye@PontchartrainPartners.com	<i>[Signature]</i>
SAM DANCER	DRC EMERGENCY SERVICES	6258 MARSHAL FOX ST. NEW ORLEANS, LA 70124	251-232- 3660	SDANCER@DRCUSA.COM	<i>[Signature]</i>
John Troutman	CPRA				



# MANDATORY PRE-BID CONFERENCE ATTENDANCE RECORD



NAME/SIGNATURE (SIGN-IN)	COMPANY NAME	COMPANY ADDRESS	PHONE NO.	E-MAIL ADDRESS	NAME/SIGNATURE (SIGN-OUT)
Nolan Simoneaux, Jr. 	Bertucci Contracting	P.O. Box 10582, Jefferson, LA, 70181	(504) 835-0303	Nolan5@Bertuccicorp.com	
Nolan Simoneaux, III 	BERTUCCI CONTRACTING	P.O. Box 10582, Jefferson, LA 70181	(504) 835-0303	Nolan3@Bertuccicorp.com	
LARRY HECKER 	BUILDING SPECIALTIES Co.	P.O. Box 51778, N.O. LA 70151	504 895 0322	lhecker@buildingspecialtiesonline.net	
Darryl Couvillion Jr. 	Quality first Marine	2160 8th St. Mandeville, LA 70471	504 909-6959	dcouvillion@qualityfirstmarine.com	
 ANTHONY SALAS	Boh Bros Const. Co. LLC	730 S. TANTE ST. NEW ORLEANS, LA 70119	(504) 827 7616	ASALASINO@BohBros.com	ANTHONY SALASINO 
SCOTT BARTKOWSKI 	LIVING SHORELINE SOLUTIONS	10132 BIRKEN DR PINEHURST FL 32507	850 375 6622	S.BARTKOWSKI@LIVINGSHORELINESOLUTIONS.COM	
TERRY SONG 	PCS	6 East Third St. Kenner, LA	504- 467- 1444	terry.song@pcsbuid.com	
George Cvitanovic 	Cvitanovic Towing	130 Woodchase Sf Belle Chasse, LA 70037	504- 452 1153	george@cvtanovictowing.com	George Cvitanovic

# MANDATORY PRE-BID CONFERENCE ATTENDANCE RECORD



NAME/SIGNATURE (SIGN-IN)	COMPANY NAME	COMPANY ADDRESS	PHONE NO.	E-MAIL ADDRESS	NAME/SIGNATURE (SIGN-OUT)
Ryan Littlewood	Coastal Environments, Inc.	1260 Main St. Baton Rouge, LA 70809	225-383-7455	rlittlewood@coastalenv.com	<i>[Signature]</i>
ELGIN MATHIS	Port Partner	650 DOYDRAS SUITE 2345 NO. LA 70130	504 872 3199	ELGIN.MATHIS@PORTPARTNERS.COM	<i>[Signature]</i>
David Follette	Pine Bluff	1201-C1 Airline Hwy Baton Rouge, LA 70805	225 636 0697	david.follette@pbsgc.com	<i>[Signature]</i>

# MANDATORY PRE-BID CONFERENCE ATTENDANCE RECORD



NAME/SIGNATURE (SIGN-IN)	COMPANY NAME	COMPANY ADDRESS	PHONE NO.	E-MAIL ADDRESS	NAME/SIGNATURE (SIGN-OUT)

# MANDATORY PRE-BID CONFERENCE ATTENDANCE RECORD



NAME/SIGNATURE (SIGN-IN)	COMPANY NAME	COMPANY ADDRESS	PHONE NO.	E-MAIL ADDRESS	NAME/SIGNATURE (SIGN-OUT)

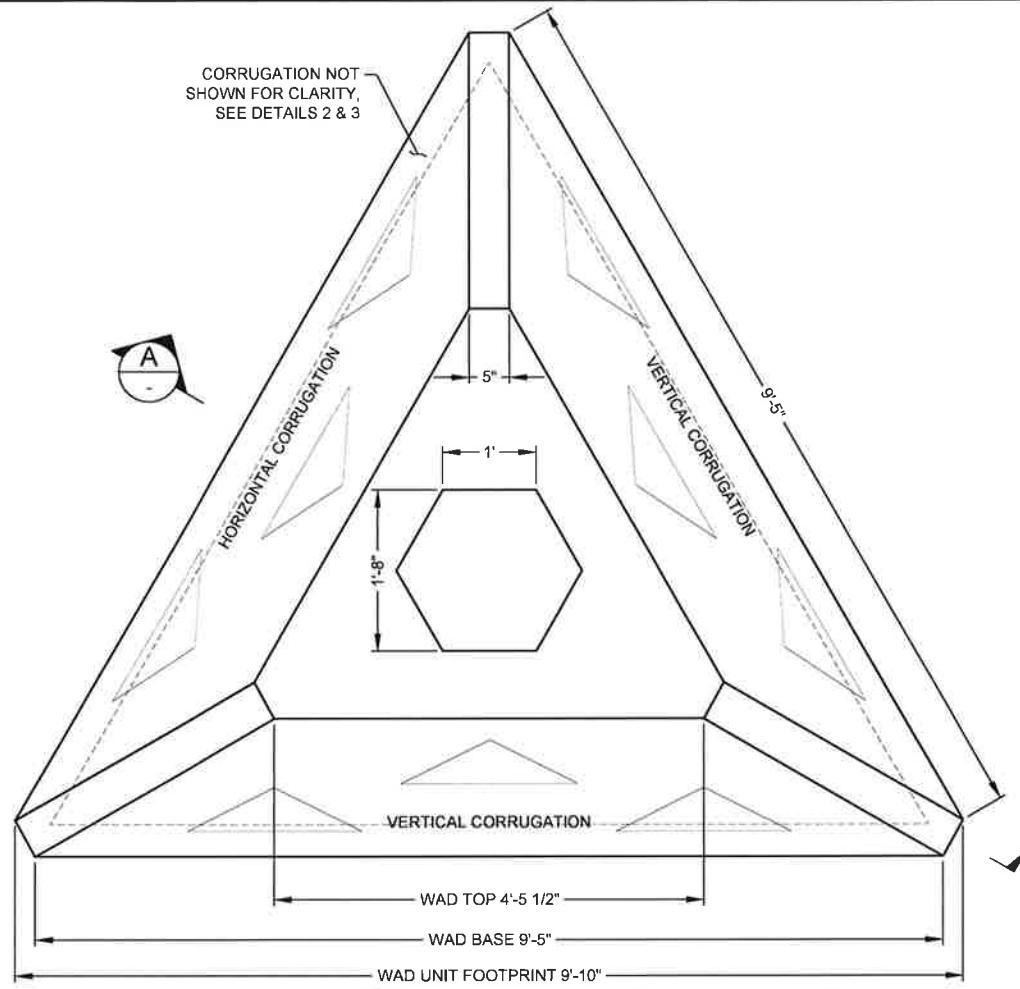
# MANDATORY PRE-BID CONFERENCE ATTENDANCE RECORD



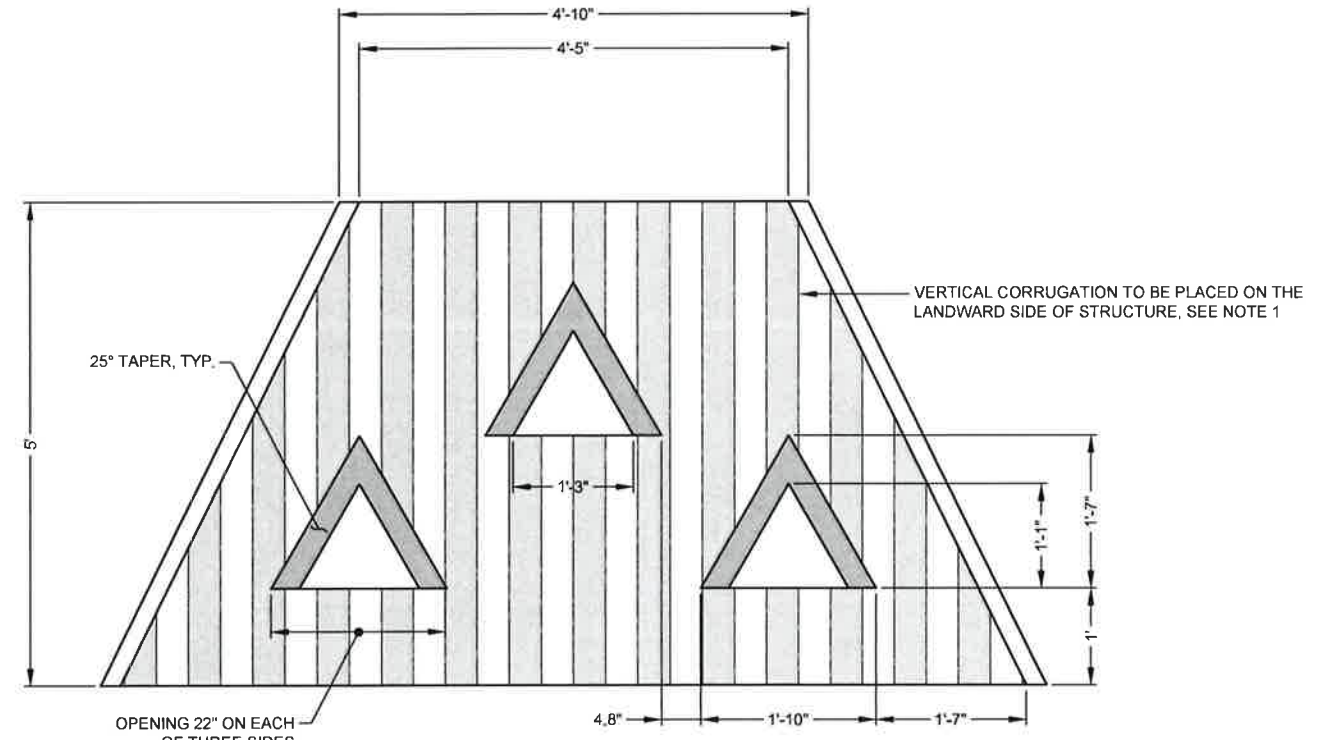
NAME/SIGNATURE (SIGN-IN)	COMPANY NAME	COMPANY ADDRESS	PHONE NO.	E-MAIL ADDRESS	NAME/SIGNATURE (SIGN-OUT)

# Attachment B

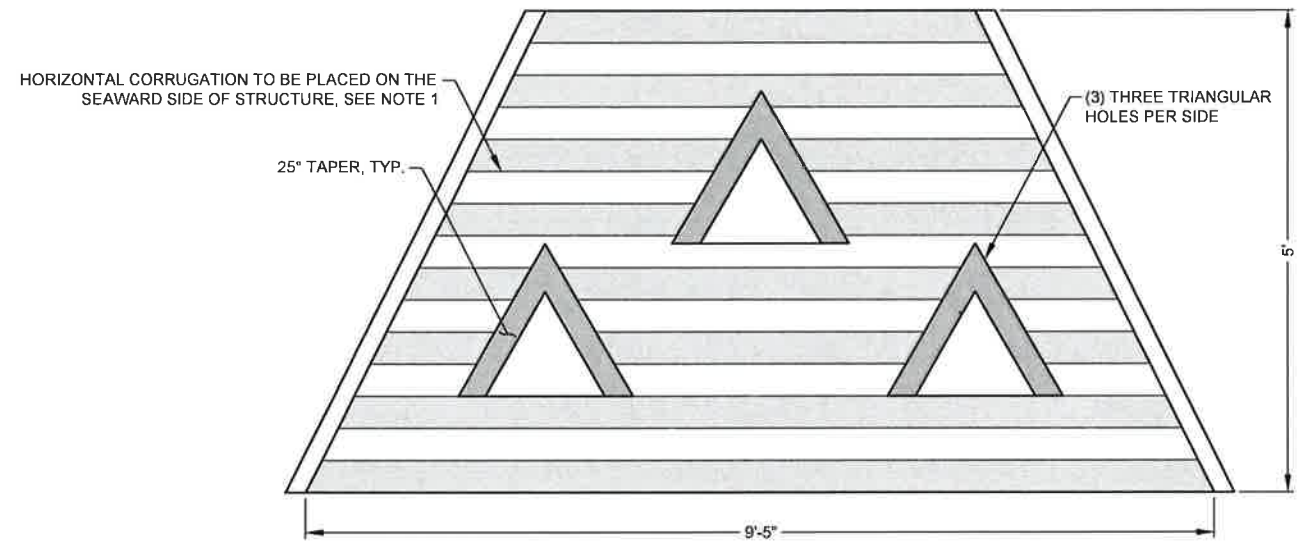
## Plan Revisions



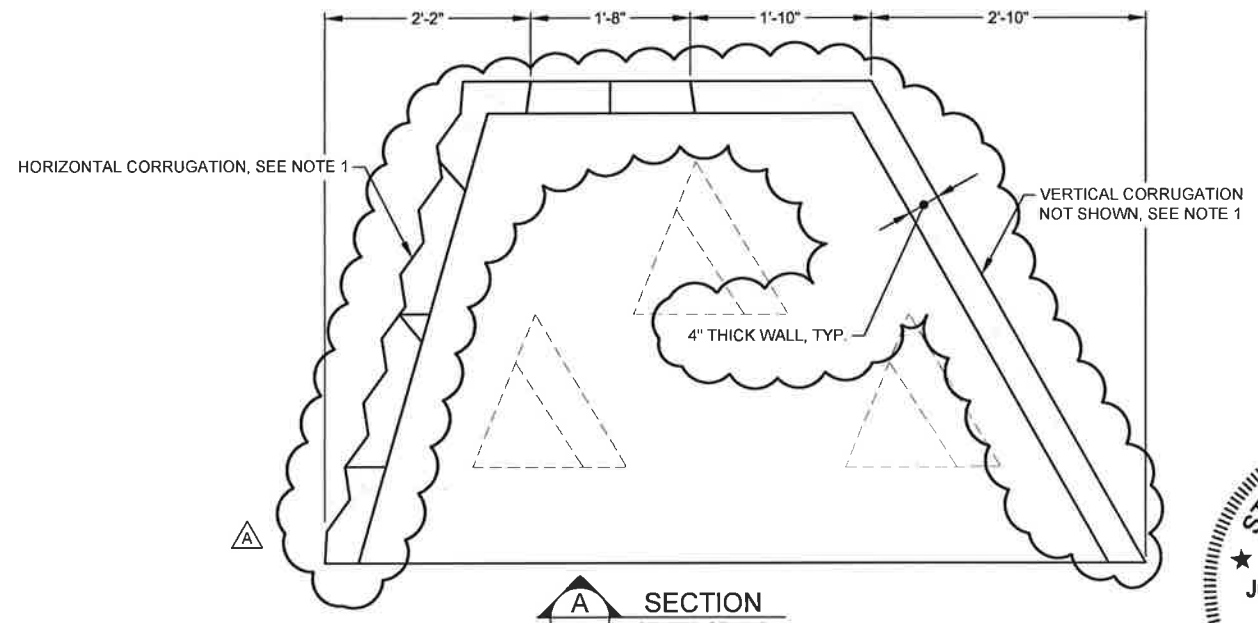
**1** DETAIL  
TOP OF WAD  
SCALE IN FEET



**3** DETAIL  
LANDWARD  
SIDE OF WAD  
SCALE IN FEET

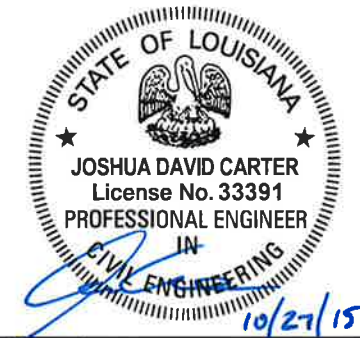


**2** DETAIL  
SEAWARD  
SIDE OF WAD  
SCALE IN FEET



**A** SECTION  
CENTER OF WAD  
SCALE IN FEET

**NOTES**  
1. WAD UNITS WILL BE CORRUGATED OR SMOOTH, AS DEPICTED ON SHEET 23. FOR SMOOTH UNITS, REMOVE CORRUGATION SHOWN ON THIS SHEET.



REV.	DATE	DESCRIPTION	BY
A	10/27/15	REVISED WALL THICKNESS	JC



SUBMITTED UNDER THE AUTHORITY OF  
JOSH CARTER, P.E. 33391

**COASTAL PROTECTION AND RESTORATION AUTHORITY**

450 LAUREL STREET  
BATON ROUGE, LOUISIANA 70801

DRAWN BY: T. MORRISON    DESIGNED BY: J. CARTER

**LIVING SHORELINE DEMONSTRATION PROJECT**

STATE PROJECT NUMBER: PO-148

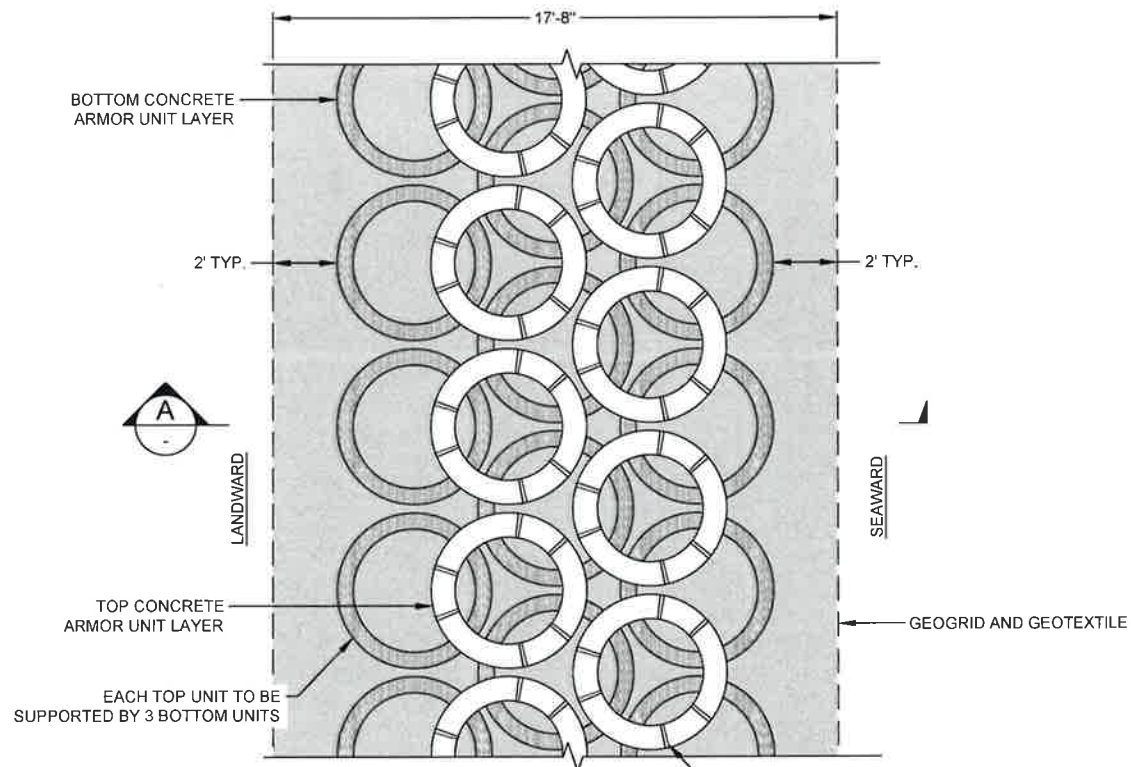
FEDERAL PROJECT NUMBER: NA

APPROVED BY: H. BERMUDEZ

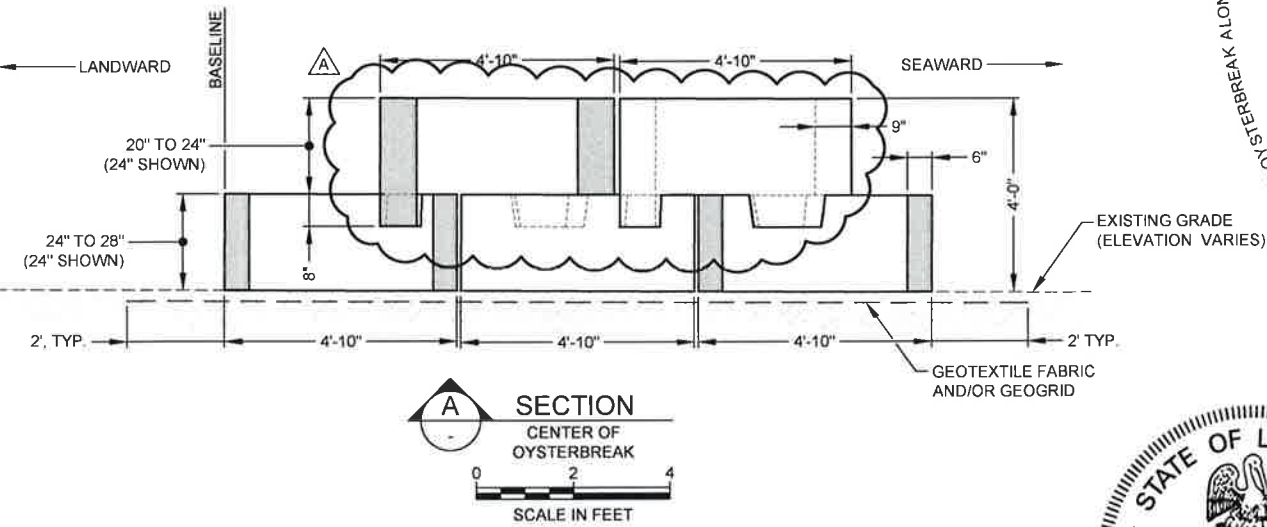
**WAD UNIT DETAILS**

DATE: 9/24/15

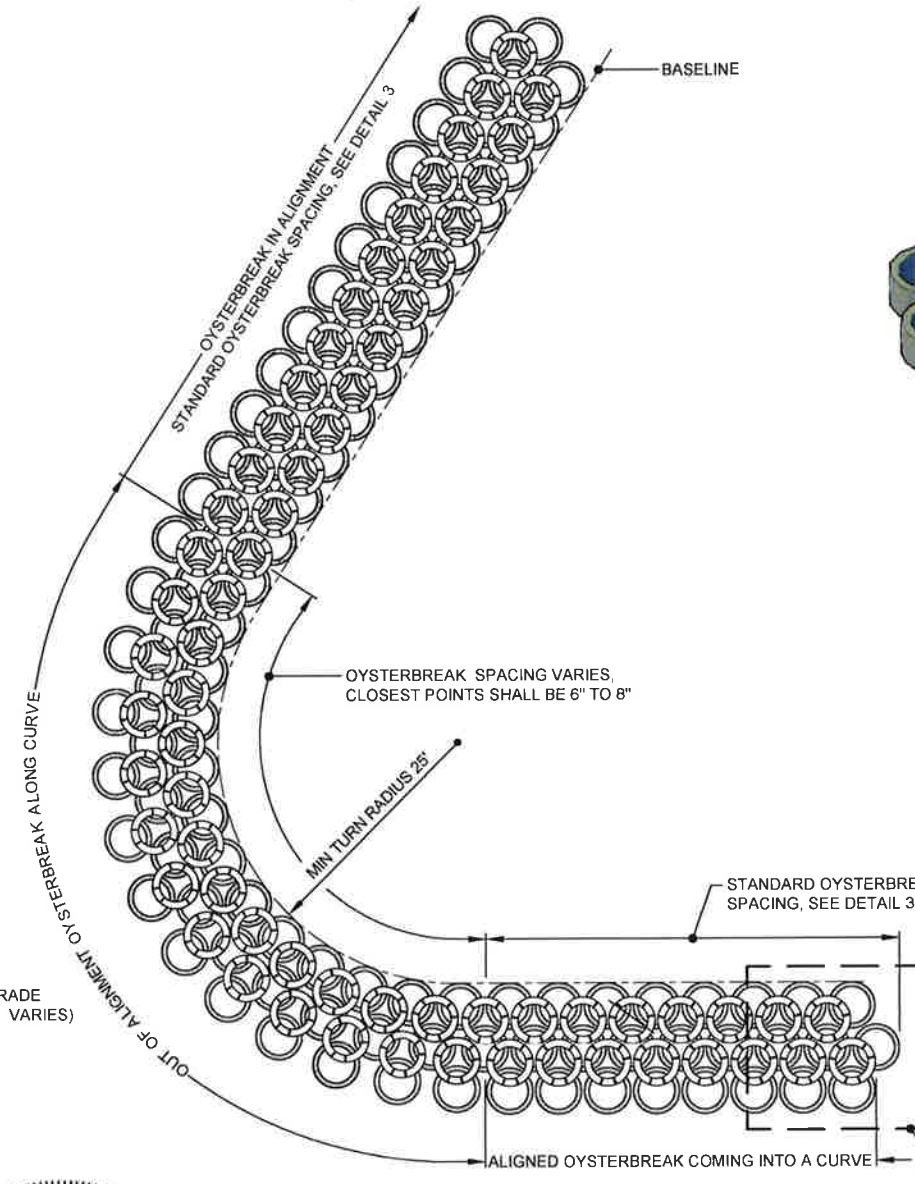
SHEET 22 OF 34



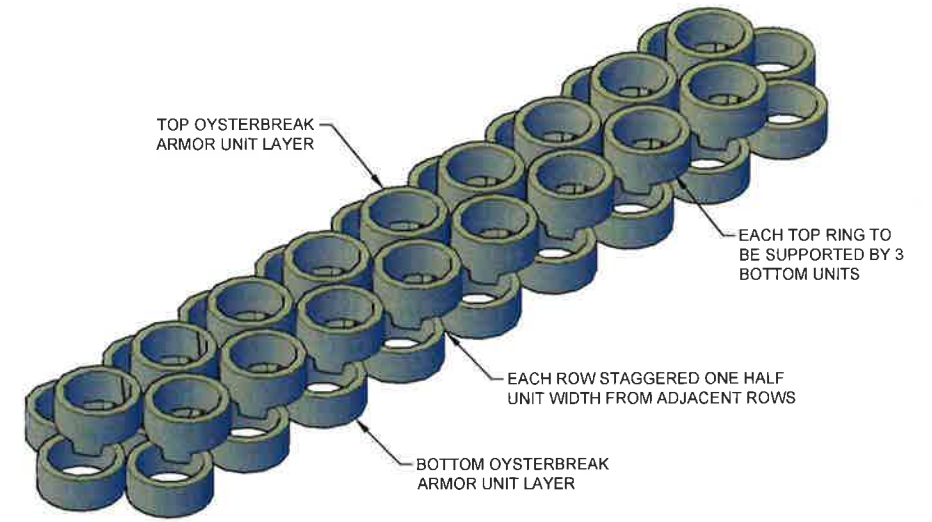
**1** DETAIL  
OYSTERBREAK  
PLAN VIEW  
SCALE IN FEET



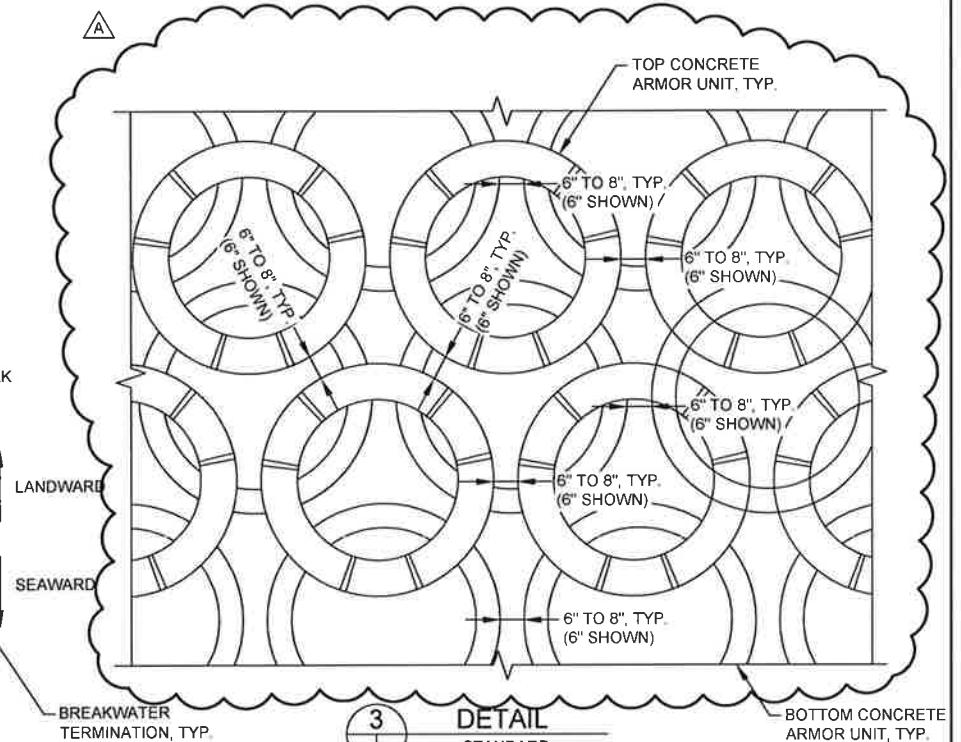
**A** SECTION  
CENTER OF  
OYSTERBREAK  
SCALE IN FEET



**2** DETAIL  
REEF BALL SPACING  
AROUND CURVE  
SCALE IN FEET



PERSPECTIVE VIEW  
REEF BALL UNITS



**3** DETAIL  
STANDARD  
OYSTERBREAK SPACING  
SCALE IN FEET

**NOTES**

1. DIMENSIONS OF UNITS ARE APPROXIMATE AND MAY BE MODIFIED AT TIME OF CONSTRUCTION.
2. THE CENTER OF TOP LAYER ARMOR UNITS SHALL BE PLACED ON TOP OF THREE (3) BOTTOM LAYER UNITS, WHERE TOP LAYER PEGS ARE INSERTED INTO BOTTOM LAYER HOLES. ORIENT TWO PEGS FACING SEAWARD AND ONE PEG FACING LANDWARD.
3. TOP UNITS IN STRUCTURE TO HAVE PEGS ON BOTTOM OF UNIT. BOTTOM UNITS IN STRUCTURE TO BE FABRICATED WITHOUT PEGS.



SUBMITTED UNDER THE AUTHORITY OF  
JOSH CARTER, P.E. 33391

**COASTAL PROTECTION AND RESTORATION AUTHORITY**

450 LAUREL STREET  
BATON ROUGE, LOUISIANA 70801

DRAWN BY: T. MORRISON

DESIGNED BY: J. CARTER

LIVING SHORELINE  
DEMONSTRATION PROJECT

STATE PROJECT NUMBER: PO-148

FEDERAL PROJECT NUMBER: NA

APPROVED BY: H. BERMUDEZ

OYSTERBREAK LAYOUT

DATE: 9/24/15

SHEET 28 OF 34

REV.	DATE	DESCRIPTION	BY
A	10/23/15	REVISED TOP LAYER ORIENTATION; REVISED UNIT SPACING	JC